

NEBRASKA

Good Life. Great Mission.

DEPT. OF HEALTH AND HUMAN SERVICES



Jim Pillen, Governor

October 30, 2023

The Honorable Ben Hansen
Members of the Health & Human Services Committee
Nebraska Legislature
State Capitol Room 1402
Lincoln, NE 68509

The Honorable Robert Clements
Members of the Appropriations Committee
Nebraska Legislature
State Capitol Room 1305
Lincoln, NE 68509

Subject: Outcomes Relating to Expenditures and Change or Movement of Funds Relating to
Child Welfare Report

Dear Chairman Hansen and Chairman Clements:

Nebraska Revised Statutes § 81-3133(1)(b) requires the Department of Health and Human Services (DHHS), Division of Children and Family Services to report in writing beginning with the third calendar quarter of 2012 on its expenditures for each quarter and the outcomes related to such expenditures within 30 days after the quarter to the Appropriations and Health and Human Services committees. Pursuant to this law, DHHS is submitting a report of these expenditures and related outcomes for the quarter beginning July 1, 2023, through September 30, 2023.

Additionally, the statute requires that the report shall identify any changes or movement of funds between subprograms in excess of \$250,000 relating to child welfare in Budget Program 347 or Budget Program 354. There were no changes or movement of funds between subprograms related to child welfare in Budget Program 354 during the period of this report.

Sincerely,

A handwritten signature in blue ink, appearing to read "Tony Green".

Tony Green
Interim Director, Division of Children and Family Services

Attachment

Division of Children and Family Services

Outcomes Relating to Expenditures and Change or Movement of Funds Relating to Child Welfare Report

October 30, 2023

Neb. Rev. Stat. § 81-3133(1)(b)

Introduction

Nebraska Revised Statutes § 81-3133(1)(b) requires the Department of Health and Human Services (DHHS), Division of Children and Family Services (CFS) to report in writing beginning with the third calendar quarter of 2012 on its expenditures for each quarter and the outcomes related to such expenditures within 30 days after the quarter to the Appropriations and Health and Human Services committees. This statute also requires the report to identify any changes or movement of funds in excess of \$250,000 relating to child welfare between subprograms within Budget Program 347 and Budget Program 354.

Expenditures

CFS child welfare expenditures for the period of July 1, 2023, through September 30, 2023, are listed on pages two and three of this report.

Outcomes

Outcomes related to the expenditures in this report are derived from Children's Outcomes Measured in Protection and Safety Statistics (COMPASS). COMPASS measures reflect federal performance indicators that DHHS is held accountable for by the Federal Administration for Children and Families. Outcome measures can be found on pages four through nine of this report.

Ongoing updates of the COMPASS measures are posted on the Department website at <https://dhhs-cfscompass.ne.gov/CFSCompass/>. Each outcome report identifies the outcome measurement, provides a brief description of the measurement, numerical data by month for the State and each of the DHHS Service Areas, and provides the federal outcome measurement target. Each outcome report also provides a graph to depict the data over time. Measurement definitions and definitions of composite scores are included on each graph.

Movement of Funds

There were no changes or movement of funds in excess of \$250,000 between subprograms related to child welfare in Budget Program 354 during the period of this report.

July - September 2023 CHILD WELFARE EXPENDITURES

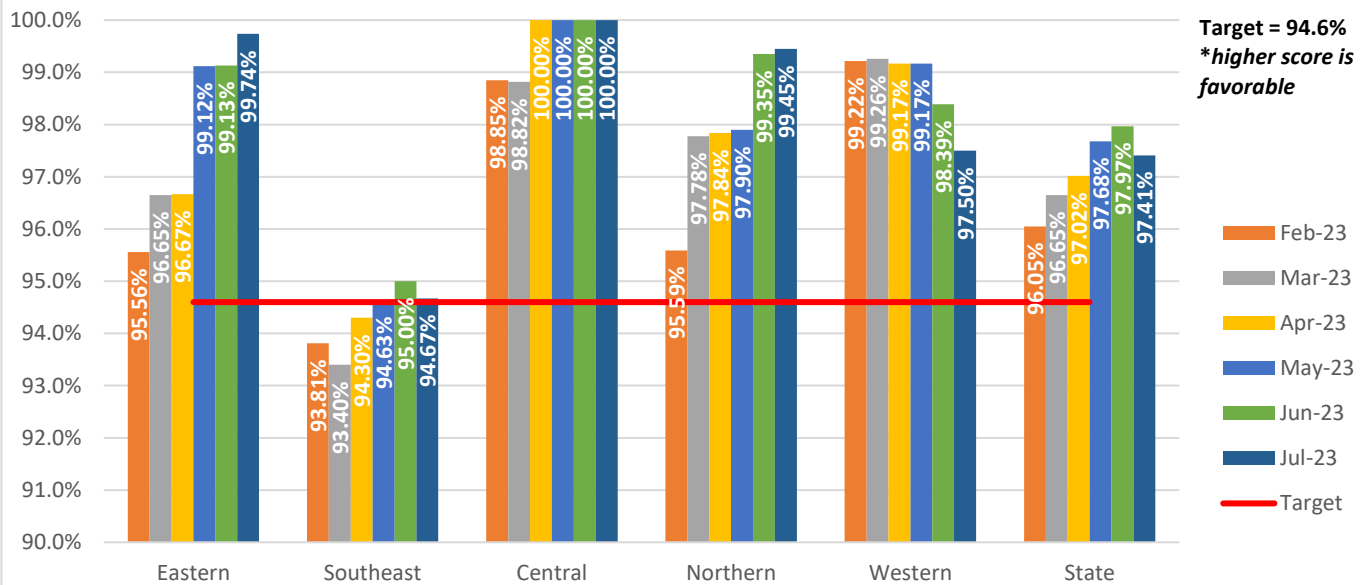
CHILD WELFARE AID	EXPENDITURES
17 Post-Adoption Guardianship	\$177,043
General Fund	\$177,043
18 Protection & Safety	\$577,558
General Fund	\$577,558
Federal Fund	\$ - 0 -
30 IV-E Foster Care	\$2,429,880
General Fund	\$916,785
Federal Fund	\$1,513,095
31 IV-E Adoption Assistance	\$11,587,755
General Fund	\$5,779,877
Federal Fund	\$5,807,878
32 IV-E Guardianship	\$102,920
General Fund	\$39,922
Federal Fund	\$62,998
34 Subsidized Adoption	\$912,244
General Fund	\$912,244
Federal Fund	\$ - 0 -
35 Domestic Violence Program	\$695,813
General Fund	\$338,807
Federal Fund	\$357,006
36 Education Assistance	\$3,727,353
General Fund	\$3,727,353
37 Subsidized Guardianship	\$1,584,407
General Fund	\$1,584,407

July - September 2023 CHILD WELFARE EXPENDITURES

48 Child Welfare	\$43,761,097
General Fund	\$40,405,028
Federal Fund	\$3,356,069
49 Tribal Child Welfare	\$2,004,627
General Fund	\$2,004,627
50 Subsidized Independent Living	\$157,831
General Fund	\$157,831
51 IV-E Independent Living	\$7,400
General Fund	\$2,693
Federal Fund	\$4,707
52 Adoption & Safe Families	\$171,105
Federal Fund	\$171,105
Child Welfare Total	\$67,897,033
 General Fund	\$56,624,175
 Federal Fund	\$11,272,858

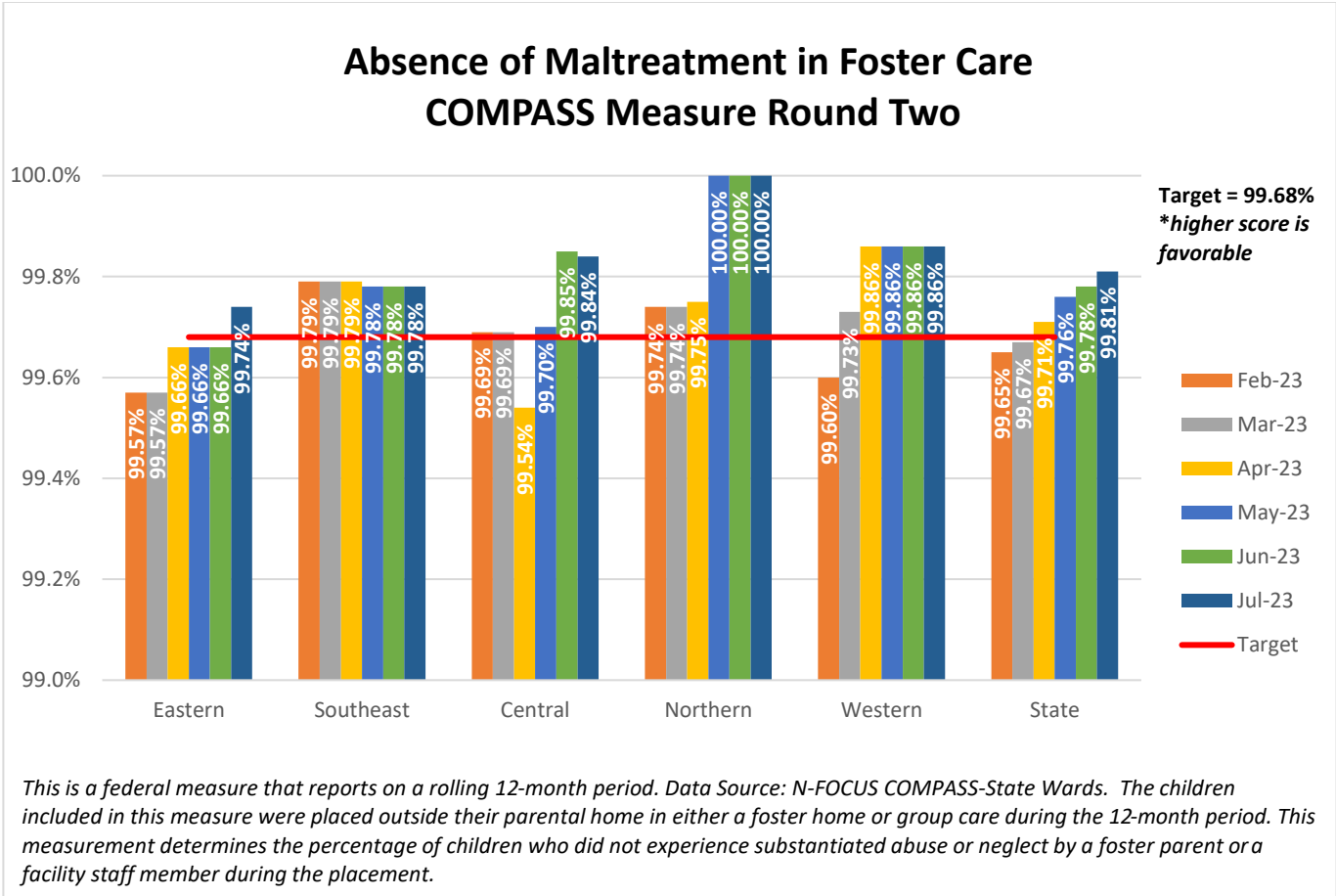
COMPASS Measures

Absence of Maltreatment Recurrence COMPASS Measure Round Two



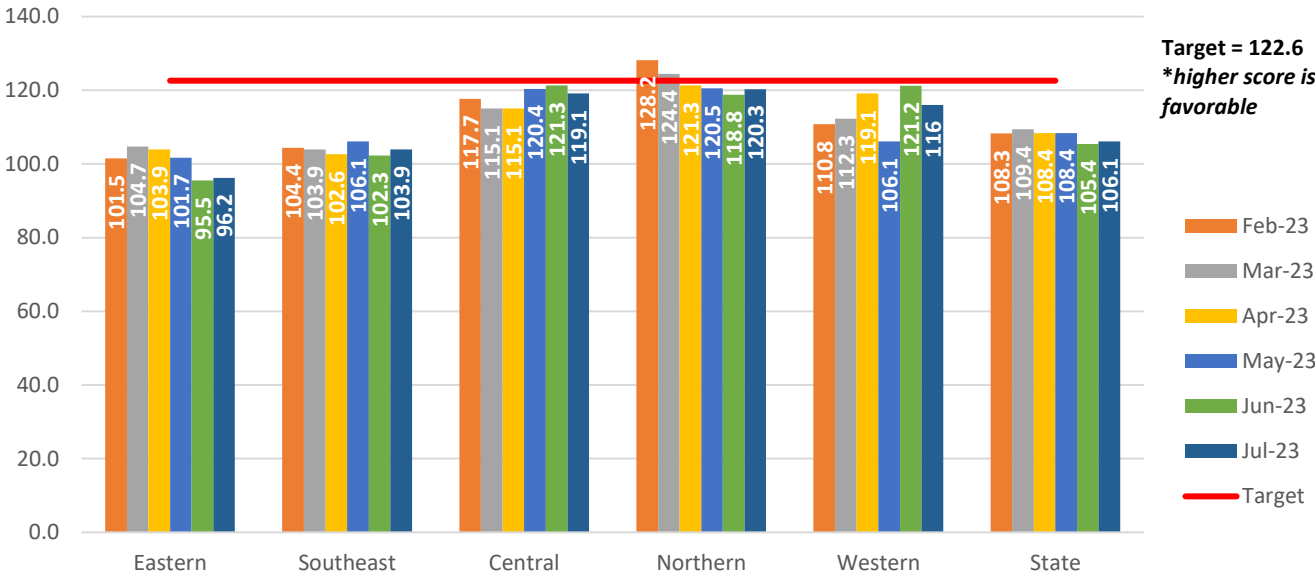
This is a federal measure that reports on a rolling 12-month period. Data Source: N-FOCUS COMPASS-State Wards. This measurement determines the percentage of children who did not experience a subsequent substantiated abuse or neglect incident within six months of the first incident of abuse or neglect. Victims are defined as children where the court or DHHS has substantiated the allegations of abuse or neglect.

COMPASS Measures



COMPASS Measures

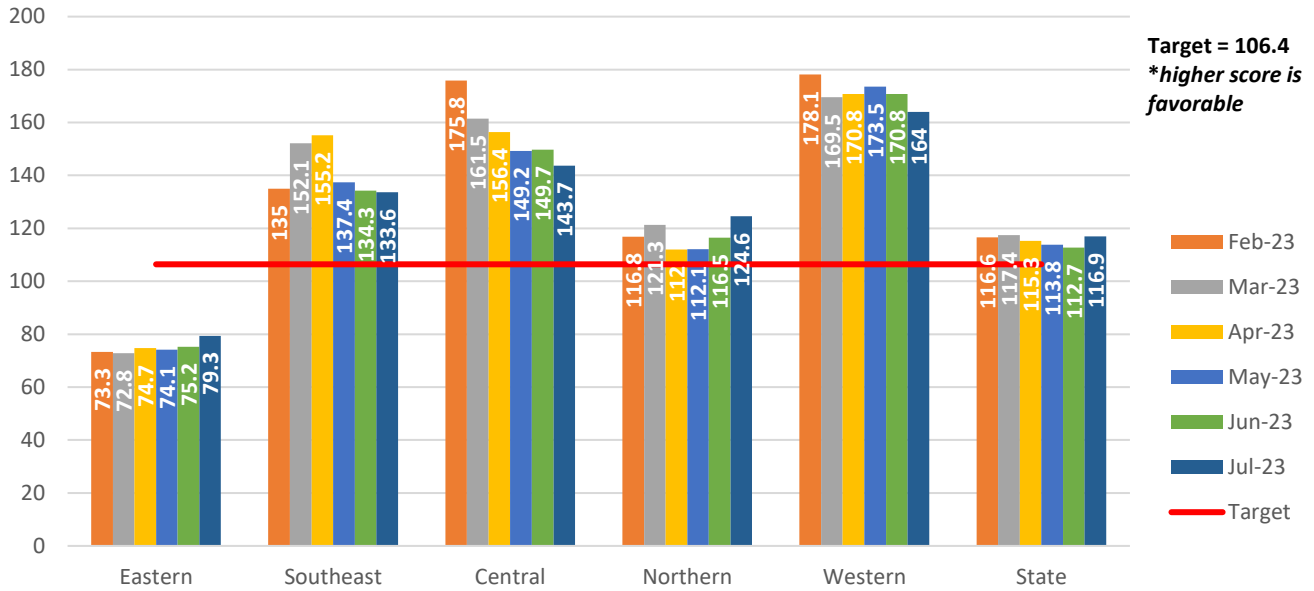
Timeliness and Permanency of Reunification COMPASS Measure Round Two



This is a federal composite measure. Data Source: N-FOCUS COMPASS- State Wards. The Reunification Composite measures the timeliness of reunification and whether the reunification was permanent over a specific period of time. The Reunification Composite includes four factors: Reunification in Less Than 12 Months, Median Time to Reunification, Entry Cohort Reunification in Less Than 12 Months, and Permanence of Reunification.

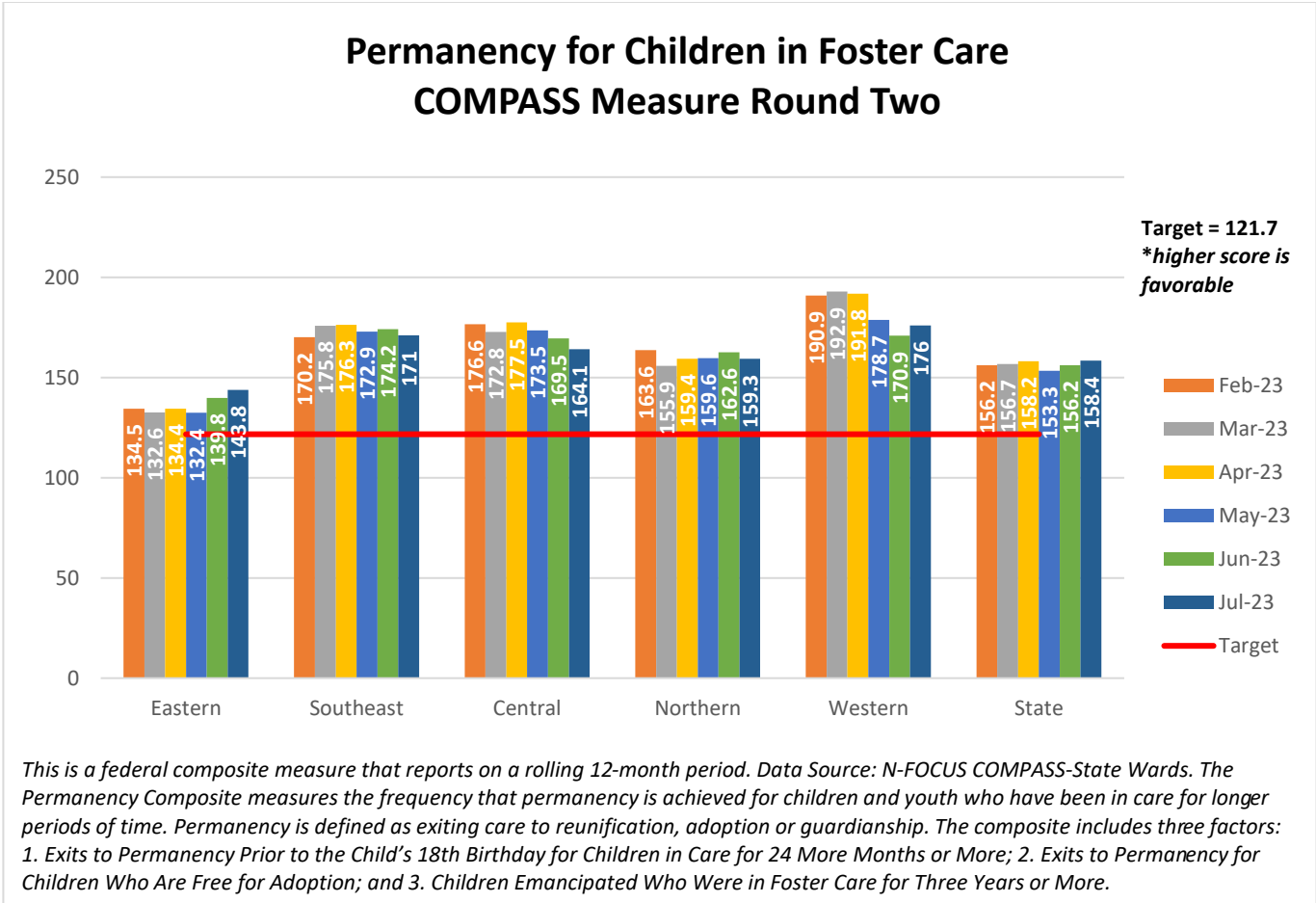
COMPASS Measures

Timeliness of Adoption COMPASS Measure Round Two



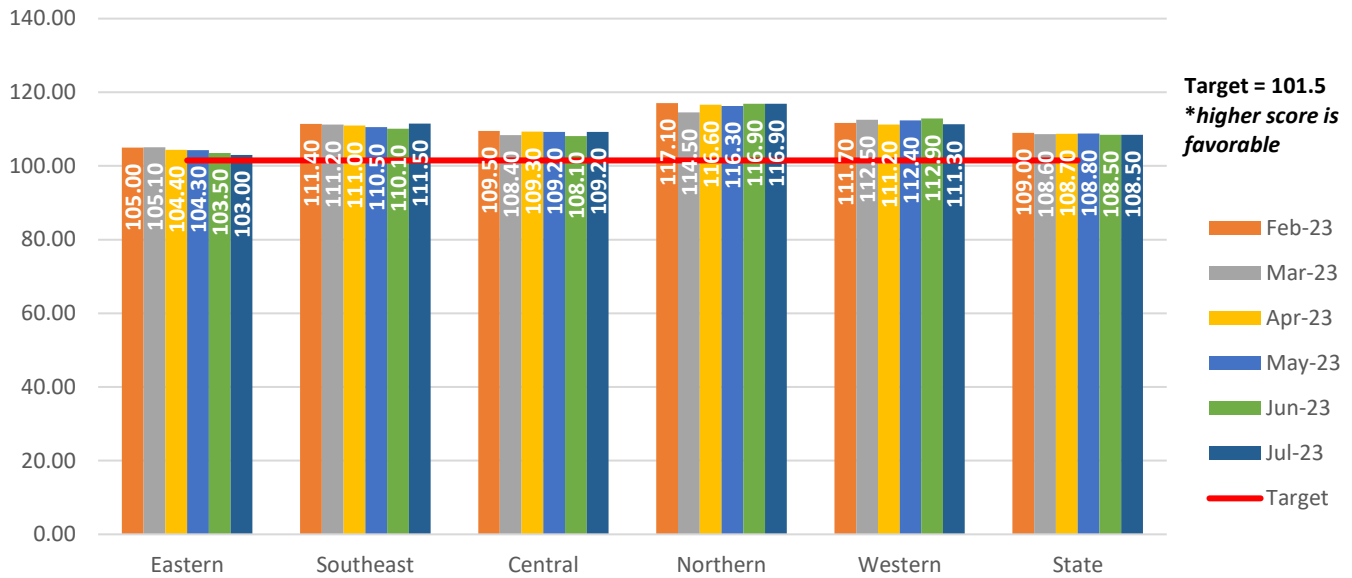
This is a federal composite measure: Data Source: N-FOCUS COMPASS- State Wards. This is a federal measure that reports on a rolling 12-month period. The Adoption Composite measures the timeliness of adoptions and includes the following five factors: Adoption in Less Than 24 Months, Median Time to Adoption, Children in Care for 17 Months or Longer Who Are Adopted by the End of the Year, Children in Care for 17 Months or Longer Who Are Legally Free for Adoption within Six Months, and Children Who Are Legally Free for Adoption Who Are Adopted within 12 Months.

COMPASS Measures



COMPASS Measures

Placement Stability COMPASS Measure Round Two



This is the federal composite measure on Placement Stability. This is a federal measure that reports on a rolling 12-month period. Data Source: N-FOCUS COMPASS-State Wards. The national standard is two or fewer placements over specific periods of time. Placements for children who experience a brief hospitalization or are on runaway status are not included in the measure.