



**NEBRASKA'S**  
COORDINATING COMMISSION  
FOR POSTSECONDARY EDUCATION

## **ACCESS COLLEGE EARLY SCHOLARSHIP 2022-23 YEAR-END REPORT**

**Statutory Authority Neb. Rev. Stat. § 85-2106**

**Approved by the Commission  
December 1, 2023**

## COMMISSIONERS

**Dr. Paul Von Behren, Chair**  
*Fremont, District 3*

**Tim Daniels, Vice-Chair**  
*Omaha, Member-at-Large*

**Dr. Deborah Frison**  
*Omaha, District 2*

**Dr. Dennis Headrick**  
*Lincoln, District 1*

**Mary Lauritzen**  
*West Point, Member-at-Large*

**Dannika Nelson**  
*Oakland, Member-at-Large*

**Molly O'Holleran**  
*North Platte, District 6*

**Tamara Weber**  
*Columbus, District 5*

**W. Scott Wilson**  
*Plattsmouth, Member-at-Large*

## STAFF

**Dr. Michael Baumgartner**  
*Executive Director*

**Dr. Kathleen Fimple**  
*Academic Programs Officer*

**Jill Heese**  
*Research Coordinator*

**Kadi Lukesh**  
*Bookkeeper, Budget Coordinator  
& Office Manager*

**J. Ritchie Morrow**  
*Financial Aid Officer*

**Helen Pope**  
*Executive Assistant*

**Matthew Roque**  
*Capital Project & Financial  
Analyst*

**Gary Timm**  
*Chief Finance & Administrative  
Officer*

**Joe Velasquez**  
*Database Manager*

**Coordinating Commission for Postsecondary Education**  
140 N. 8th Street, P.O. Box 95005, Lincoln, NE 68509-5005  
Phone: (402) 471-2847

**The Commission's reports are available online at [ccpe.nebraska.gov/reports](https://ccpe.nebraska.gov/reports)**

## Access College Early (ACE) Scholarship Program

Authorized by the Nebraska Legislature in 2007, the Access College Early (ACE) Scholarship Program pays tuition and mandatory fees for qualified, low-income high school students to enroll in college courses from Nebraska colleges or universities, either through dual enrollment or early enrollment agreements with these institutions. High school students may apply for funding under this program by completing the ACE Student Application, which is reviewed by the Coordinating Commission for award consideration.

To qualify for the scholarship, the student or student's family must be approved to participate in one of the federal need-based government programs listed below, have experienced an extreme hardship that affects family income, or be participating in a designated Career Education program as established by the Nebraska Department of Education.

- Free or Reduced-Price Lunch Program
- Supplemental Security Income
- Temporary Assistance to Needy Families (TANF)
- Supplemental Nutrition Assistance Program (SNAP)
- Special Supplemental Assistance Program (WIC)

The objective of the ACE program is to encourage well-prepared high school students from low-income families to enroll in college courses. High school students who are awarded an ACE scholarship to complete college courses while in high school can decrease their time to graduation and consequently the cost of a degree. However, students must pay to take advantage of these college course opportunities to receive college credit that can jumpstart their college careers. For students who are economically disadvantaged, the financial constraints are great.

Research shows that high school students who take college courses while in high school remain in school and graduate at higher rates, enroll in college at increased rates, and return for their college sophomore years at higher rates. In Nebraska, public high school ACE recipients are 32.6 percentage points more likely to go on to college than other public high school students from low-income families.

As can be seen from the charts starting on page 7, public high school students who are ACE scholarship recipients continue on to college at a much greater rate than public high school students from low-income families that do not receive ACE scholarships. In fact, public high school ACE scholarship recipients continue on to college at a higher rate than public high school students from non-low-income families.

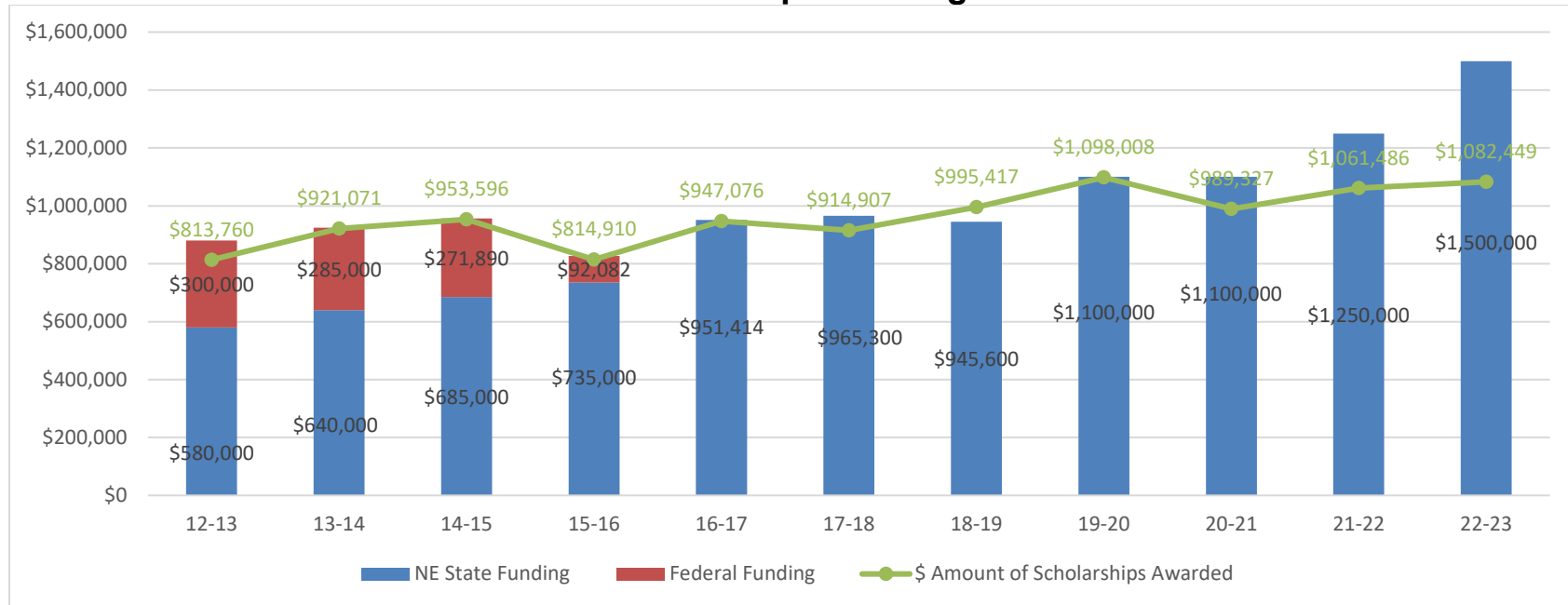
## Distribution of the 2022-23 Access College Early Scholarship

The Access College Early (ACE) Scholarship pays the tuition and mandatory fees of eligible Nebraska high school students taking dual-enrollment and early-admit college courses at participating Nebraska colleges and universities<sup>1</sup>. For 2022-23 the ACE Scholarship program was funded with \$1,500,000 General funds appropriated by the Legislature.

Nebraska colleges and universities enrolled 2,635 low-income, Nebraska high school students from 214 high schools who received 5,950 ACE Scholarships in 2022-23. The total amount awarded was \$1,082,448.97, with the average award per scholarship equaling \$182.00.

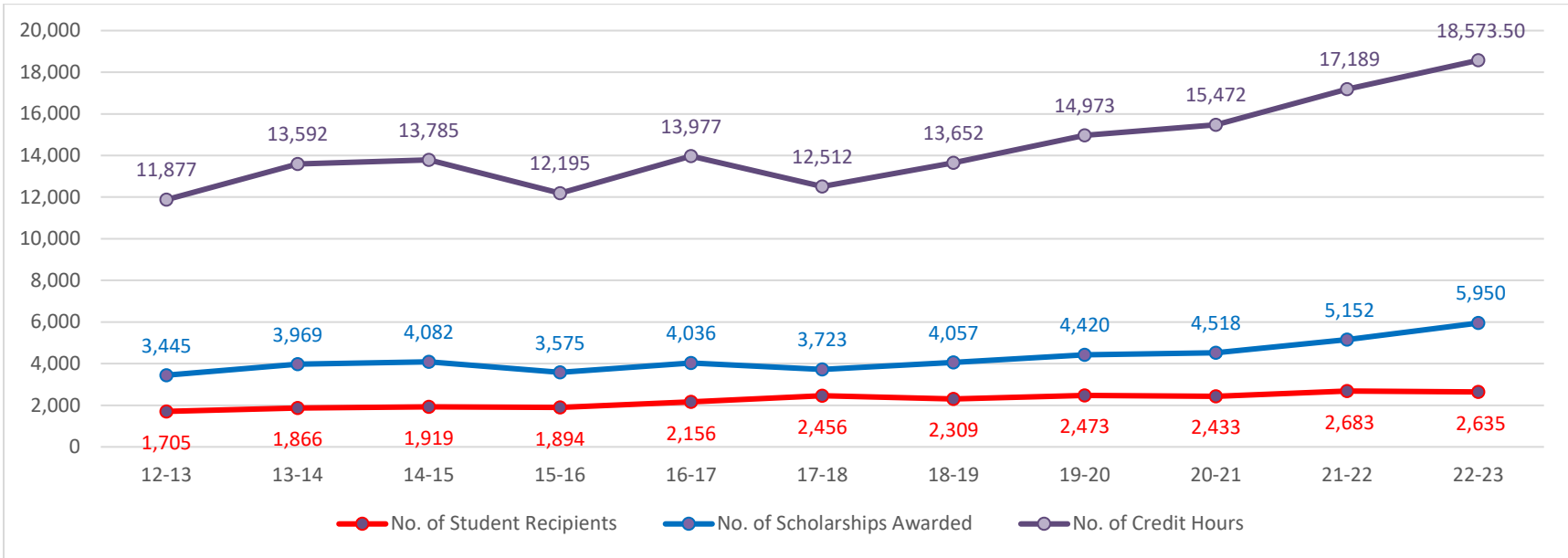
The ACE Scholarship allowed these high school students from low-income families to enroll in 18,573.50 credit hours of college course work. Seventy-four percent of the grades received by these students were a B or better. (See page 10)

### Total ACE Scholarships Funding & Awarded

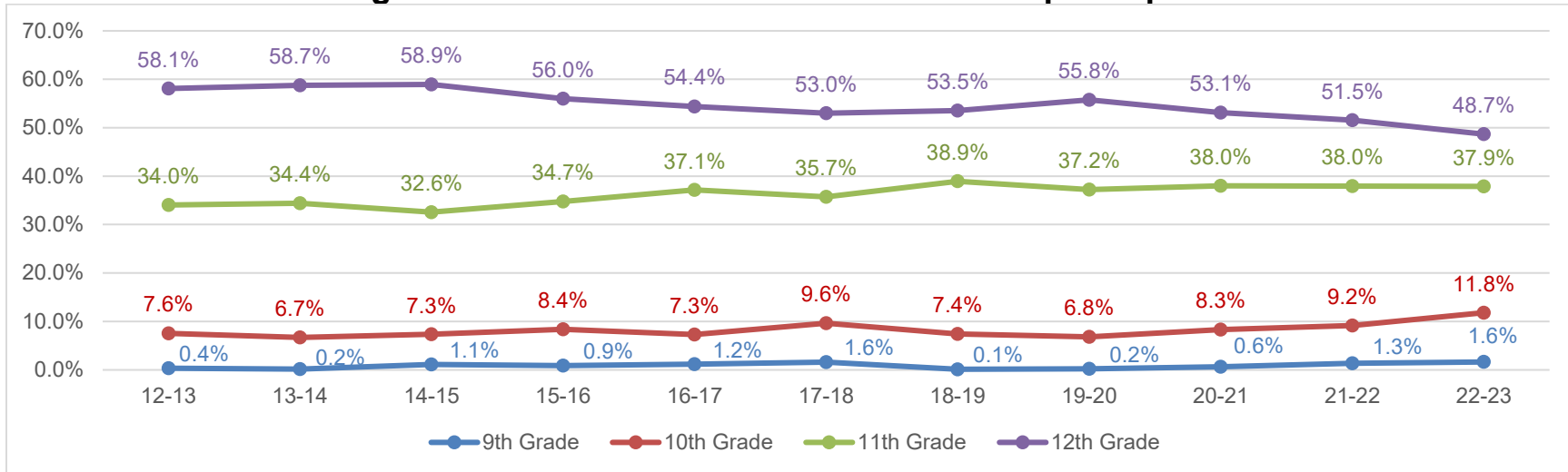


<sup>1</sup> In previous years the number of scholarships awarded to a student was limited each year based on available funding and an estimated number of students who would be applying. For 2022-23 due to the available funding and reduction in charges at the community colleges there was no limit to the number of courses available per student.

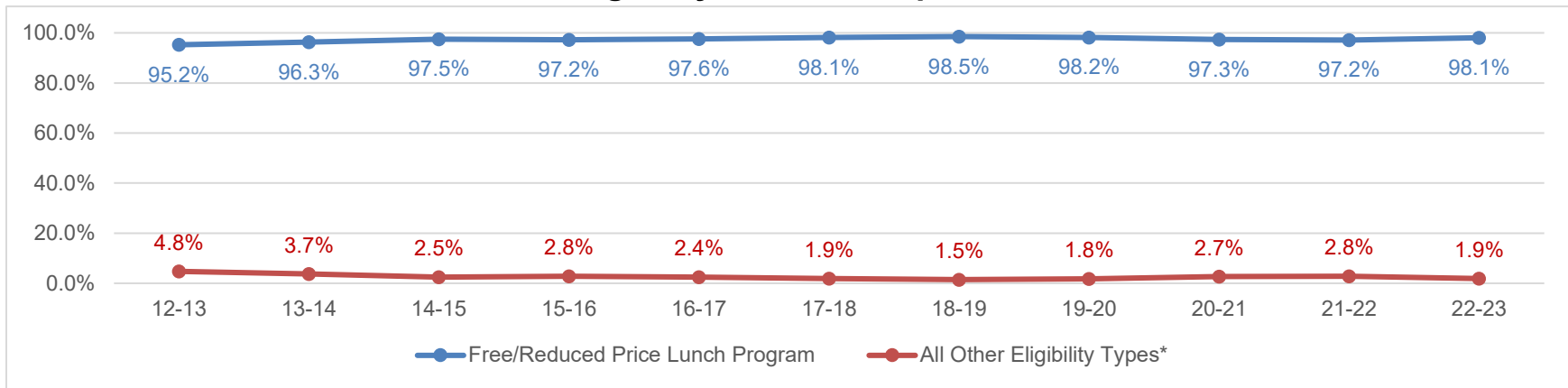
## ACE Scholarship Recipients, Scholarships Awarded, and Credit Hours Taken



## High School Grade Level of ACE Scholarship Recipients

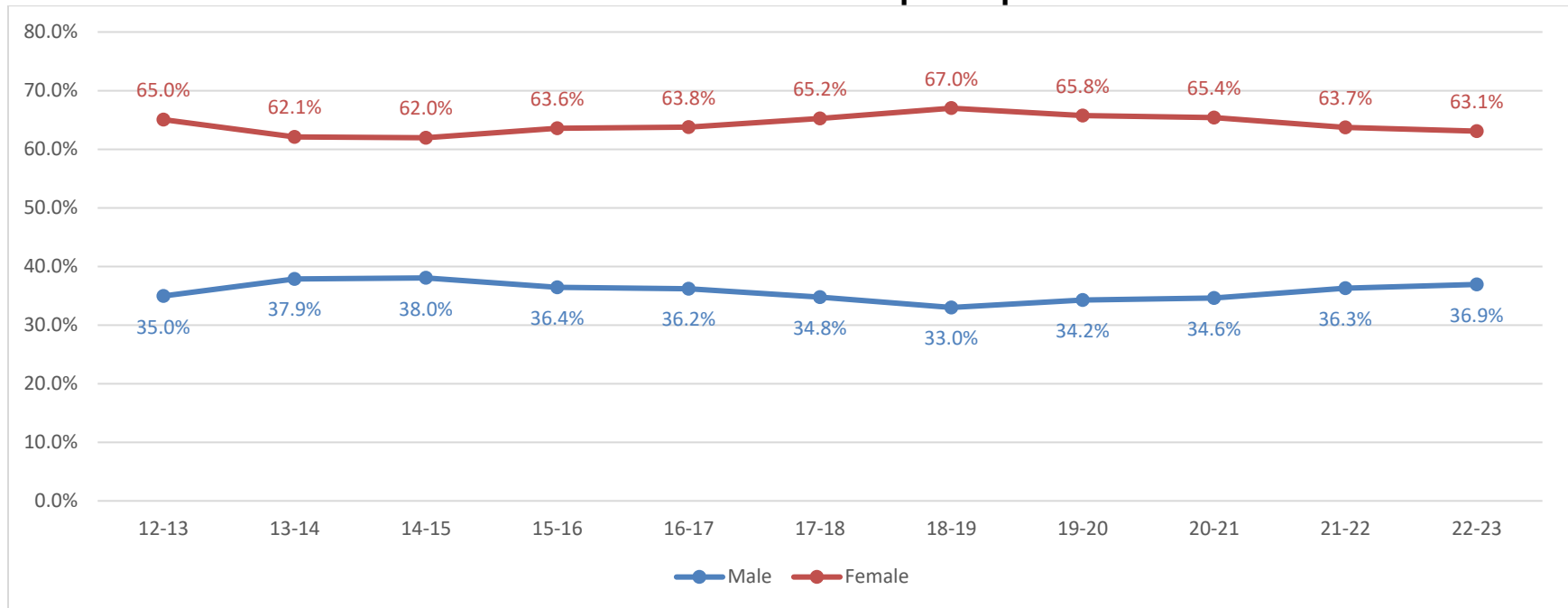


### Eligibility of ACE Recipients

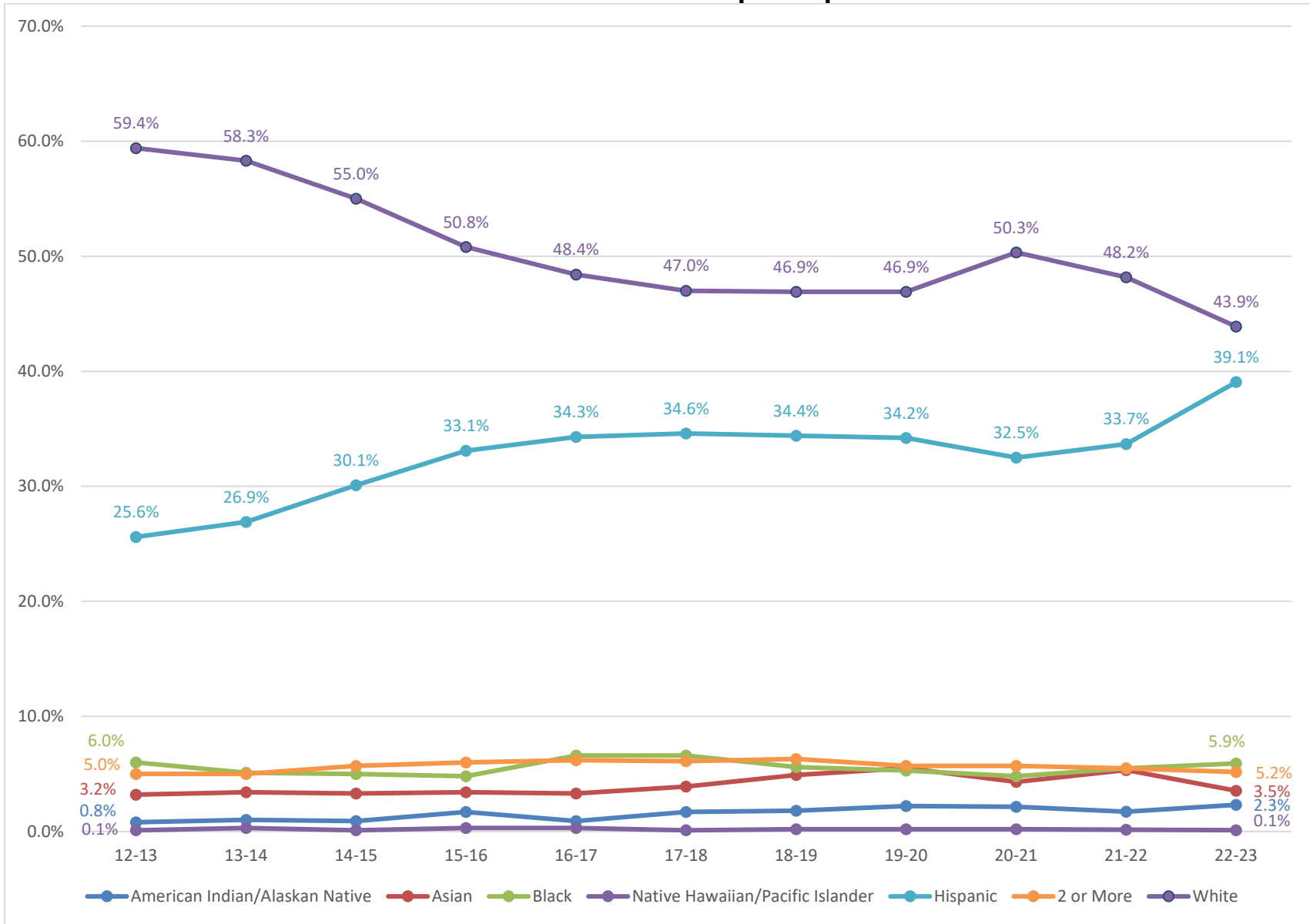


\*All Other Eligibility Types Include: CPSE – Career Program of Study; SNAP – Supplemental Nutrition Assistance Program; SSI – Supplemental Security Income; TANF – Temporary Assistance for Needy Families; WIC – Special Supplemental Nutrition Program; Other Hardship

### Gender of ACE Scholarship Recipients



## Race of ACE Scholarship Recipients



## College Continuation Rates of ACE Scholarship Recipients

Since 2009, the Coordinating Commission has conducted research to determine how many of the high school seniors who receive ACE scholarships continue on to college compared to other low-income and non-low-income graduates of Nebraska's public high schools.

For this research, a college continuation rate is defined as the percentage of public high school graduates who were enrolled in college within one year of their high school graduation. For example, for the public high school seniors who received ACE scholarships during 2019-20, the college continuation rate is the percentage of these students who were enrolled in college any time between June 1, 2020, and May 31, 2021.

Using student records and summary reports from the Nebraska Department of Education (NDE) and enrollment records from the National Student Clearinghouse (NSC), the Commission calculates the college continuation rates by gender for the public high school seniors who were ACE scholarship recipients.

The Commission then compares the college continuation rates for the seniors who received ACE scholarships while attending public high schools to the college continuation rates for other low-income and non-low-income graduates of Nebraska's public high schools.

Low-income students are defined as students who are approved to receive free or reduced-price school lunches.

Non-low-income students are students who are not approved for free or reduced-price school lunches.<sup>1</sup>

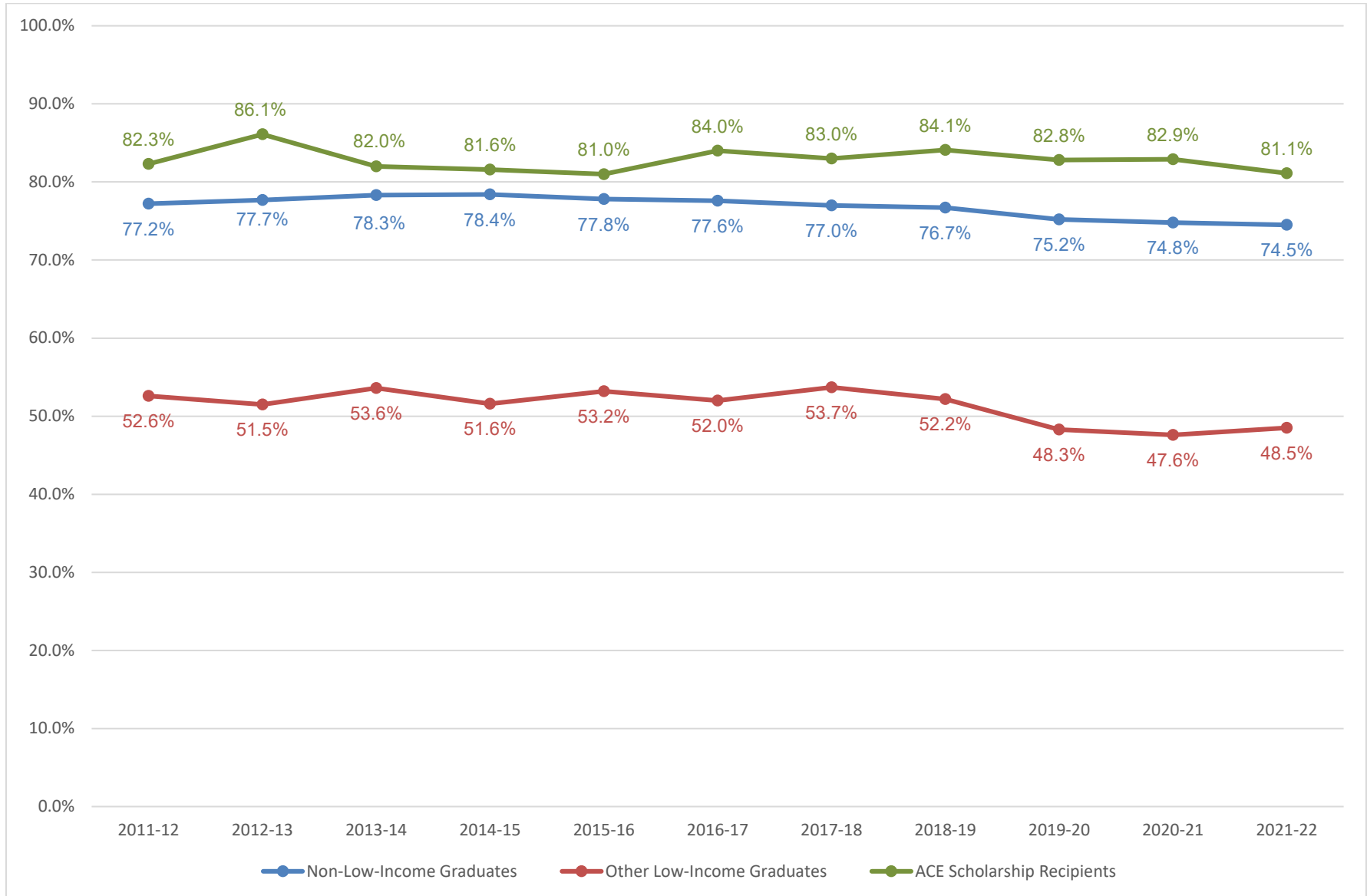
Since the Commission relies on college enrollment records from the NSC, students who continue to college at non-NSC-reporting institutions are classified as not continuing on to college. As a result, college continuation rates reported here are underreported to some degree.

Students who were homeschooled or attended nonpublic (private) high schools are not included in this phase of the research because the NDE does not have sufficient records for the Commission to compute college continuation rates for nonpublic high school students.

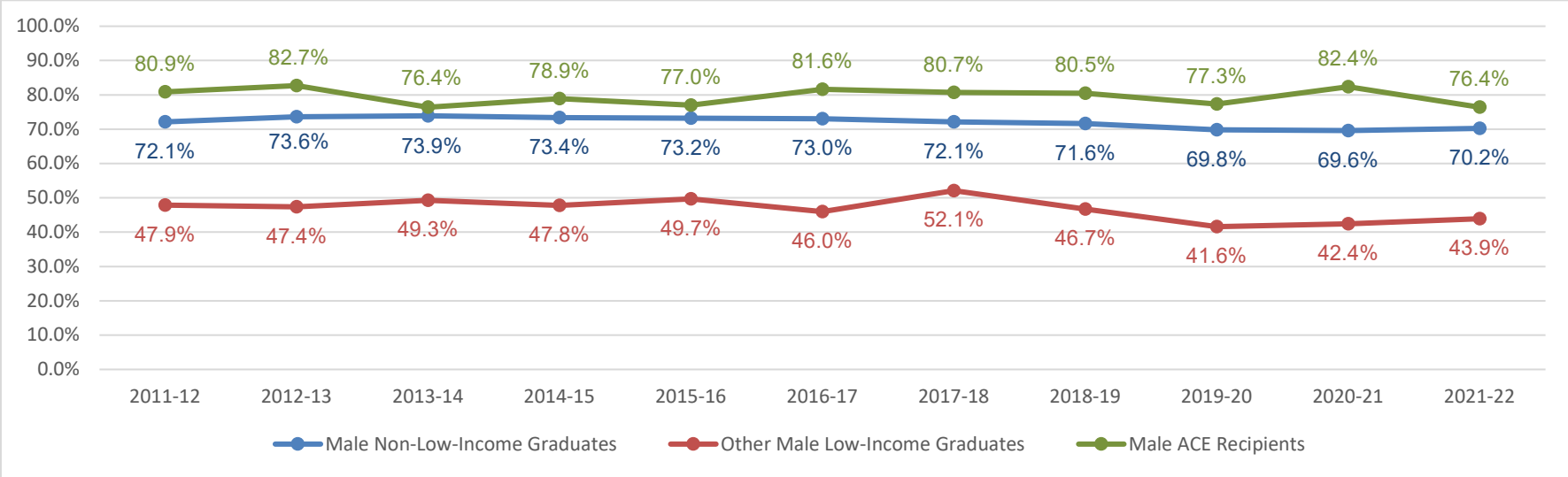
<sup>1</sup> Non-low-income students for this study include at least some students who live in low-income households but who did not apply for free or reduced-price school lunches. Since participation in the free or reduced-price school lunch program is the only indicant of household income in the student records maintained by the Nebraska Department of Education, low-income students in the non-low-income category cannot be identified and excluded for the purposes of analysis.



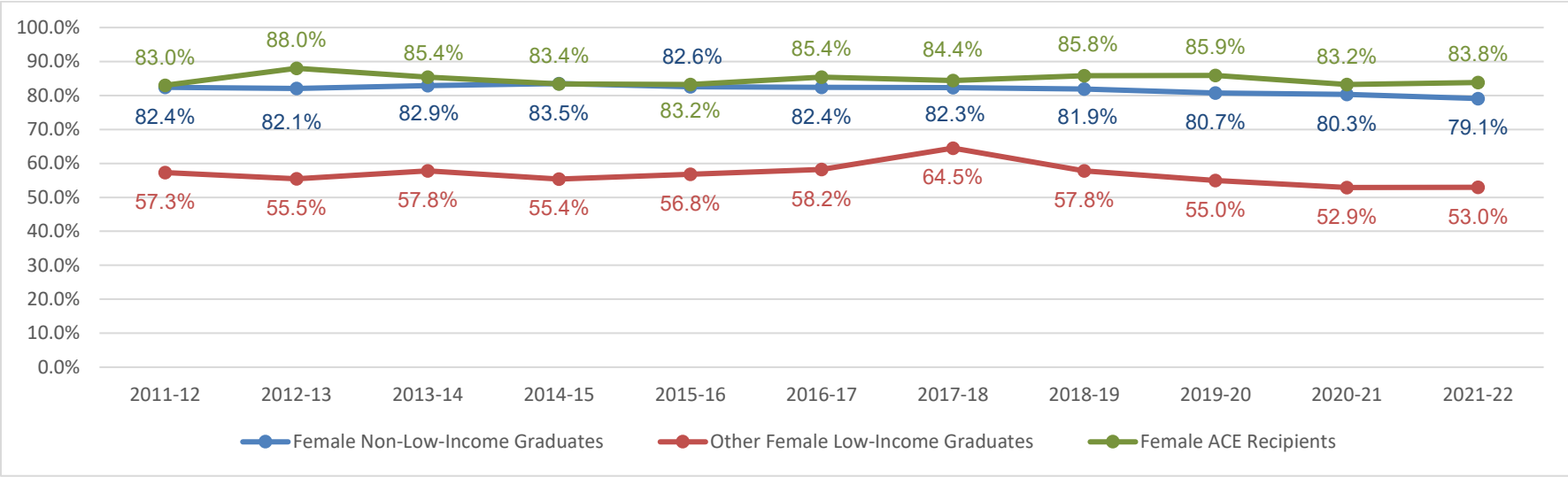
## Public High School College Continuation Rate



### Male Public High School College Continuation Rate



### Female Public High School College Continuation Rate



## 2022-23 Access College Early Scholarship

College	Amount Awarded	Number of Students	Number of Scholarships	Average per Scholarship
Bryan College of Health (BCH)	\$9,500.00	15	37	\$256.76
Central Community College (CCC)	\$156,141.00	651	1,415	\$110.07
Chadron State College (CSC)	\$22,840.90	45	68	\$335.90
Concordia University (CU)	\$3,950.00	10	15	\$263.33
Little Priest Tribal College (LPTC)	\$24,300.00	17	45	\$540.00
Midland University (MU)	\$32,750.00	94	131	\$250.00
Mid-Plains Community College (MPCC)	\$28,089.00	76	200	\$140.45
NE College of Technical Agriculture (NCTA)	\$1,112.00	5	5	\$222.40
Nebraska Indian Community College (NICC)	\$7,856.00	19	26	\$302.15
Northeast Community College (NECC)	\$144,619.50	434	973	\$148.63
Nebraska Wesleyan University (NWU)	\$185,535.00	350	565	\$328.38
Peru State College (PSC)	\$20,640.00	65	110	\$187.64
Southeast Community College (SCC)	\$44,284.36	170	345	\$128.36
University of Nebraska at Kearney (UNK)	\$15,600.00	55	68	\$229.41
University of Nebraska-Lincoln (UNL)	\$1,320.00	4	4	\$330.00
University of Nebraska at Omaha (UNO)	\$202,856.75	430	748	\$271.20
Western Nebraska Community College (WNCC)	\$82,282.46	222	559	\$147.20
Wayne State College (WSC)	\$99,221.00	411	636	\$156.00

NOTE: Tuition and fee charges are set by each institution, so Average per Scholarship varies by institution.

NOTE 2: Number of students on the above and following charts do not total the number of student recipients of 2,635 on page 3 due to students taking classes at multiple institutions.

NOTE 3: Data related to colleges where the number of students in the above chart equaled five or less were masked in the Grades Earned per Course chart, the Gender Race/Ethnicity chart, and the Grade & Eligibility chart on the following pages.

NOTE 4: Metropolitan Community College is not included. High school students taking coursework through the college were not charged tuition and fees during the 2022-23 year.

**2022-23 Access College Early Scholarship  
Grades Earned per Course**

<b>College</b>	<b>A+</b>	<b>A</b>	<b>A-</b>	<b>B+</b>	<b>B</b>	<b>B-</b>	<b>C+</b>	<b>C</b>	<b>C-</b>	<b>D+</b>	<b>D</b>	<b>D-</b>	<b>F</b>	<b>W</b>	<b>IP**</b>	<b>Hours^</b>
BCH	10	9		8	6		1	1						2		59
CCC	117	513		153	268		83	131		15	40		59	34	2	4,304
CSC	1	33			18		1	8			4		1	2		221
CU		7	4	1		1		2								47
LPTC		21			6			9			6		3			135
MU	1	65			28	1		27			7			1	1	394
MPCC	38	78		18	30		7	10		2	4		3	10		612
NCTA@																
NICC		4	8	3	3	1	3	3					1			82
NECC	226	282	1	147	121		65	54		16	19		18	24		2,962.5
NWU	56	187	39	67	107	21	25	27	3	4	8		8	13		1,953
PSC		70		4	27		2	2		1	1		3			344
SCC	67	88		52	38		31	21		9	12		18	9		1,051.5
UNK	19	15	7	3	8	3	3	5	4		1					208
UNL@																
UNO	54	256	47	47	183	22	16	78	9	2	24		9	1		2,395
WNCC	50	97	60	41	67	43	28	38	23	13	17	15	37	30		1,795.5
WSC		225	32	30	131	22	25	85	13	6	28	8	24	7		1,979

\*\* Course work in progress

^ Total number of credit hours paid for by the scholarship

@ Data masked due to low numbers

**2022-23 Access College Early Scholarship  
Gender & Race**

<b>College</b>	<b>Female</b>	<b>Male</b>	<b>American Indian/Alaskan Native</b>	<b>Asian</b>	<b>Black</b>	<b>Native Hawaiian/Pacific Islander</b>	<b>Hispanic</b>	<b>2 or More</b>	<b>White</b>
BCH	12	3	1		2		3	2	7
CCC	382	269	9	8	29	1	282	33	289
CSC	31	14	3				13	2	27
CU	7	3							10
LPTC	13	4	13						4
MU	68	26			5		76	4	9
MPCC	46	30	1		3		11	6	55
NCTA@									
NICC	13	6	12						7
NECC	284	150	13	7	12	1	105	14	282
NWU	235	115		48	42	1	86	18	155
PSC	48	17			2		8	5	50
SCC	110	60	2	4	5		20	8	131
UNK	35	20			2		34	2	17
UNL@									
UNO	279	151	1	24	48		251	27	79
WNCC	134	88	10	4	3		87	7	111
WSC	267	144	5	8	17	1	242	21	117

@ Data masked due to low numbers

**2022-23 Access College Early Scholarship  
Grade & Eligibility\* Criteria**

<b>College</b>	<b>9<sup>th</sup></b>	<b>10<sup>th</sup></b>	<b>11<sup>th</sup></b>	<b>12<sup>th</sup></b>	<b>CPSE</b>	<b>F/R</b>	<b>Other Hardship</b>	<b>SNAP</b>	<b>SSI</b>	<b>TANF</b>	<b>WIC</b>
BCH			12	3		14		1			
CCC	2	17	261	371		638	5	7	1		
CSC			17	28		45					
CU	1	1	4	4		8	1	1			
LPTC			6	11		17					
MU			88	6		93			1		
MPCC		3	26	47		74	1	1			
NCTA@											
NICC		1	9	9		19					
NECC	3	35	149	247		429		3	2		
NWU		25	158	167		341	2	4	3		
PSC			33	32		65					
SCC		3	73	94		167		3			
UNK		1	21	33		52		3			
UNL@											
UNO	2	133	124	171		422	2	5	1		
WNCC		23	71	128		222					
WSC	35	73	147	156		403		8			

\*CPSE – Career Program of Study; F/R – Free or Reduced-Price Lunch Program; SNAP – Supplemental Nutrition Assistance Program; SSI – Supplemental Security Income; TANF – Temporary Assistance for Needy Families; WIC – Special Supplemental Nutrition Program

@ Data masked due to low numbers

## Access College Early 2022-23 Number of Scholarships Awarded by High School

College (number of high schools)  
High School (number of students, number of scholarships)

### **BRYAN COLLEGE OF HEALTH (8)**

CREIGHTON COMMUNITY HIGH SCH (1, 4 )  
KEARNEY CATHOLIC HIGH SCHOOL (1, 1 )  
LEXINGTON HIGH SCHOOL (1, 1 )  
LINCOLN EAST HIGH SCHOOL (1, 1 )  
LINCOLN NORTHEAST HIGH SCHOOL (1, 1 )  
LINCOLN NORTHWEST HIGH SCHOOL (8, 27 )  
LINCOLN SOUTHWEST HIGH SCHOOL (1, 1 )  
PAPILLION-LA VISTA SENIOR HIGH (1, 1 )

### **CENTRAL COMMUNITY COLLEGE (66)**

ADAMS CENTRAL JR-SR HIGH SCH (13, 57 )  
ALMA HIGH SCHOOL (2, 2 )  
AMHERST HIGH SCHOOL (1, 3 )  
ARAPAHOE HIGH SCHOOL (3, 8 )  
ARCADIA HIGH SCHOOL (4, 15 )  
AURORA HIGH SCHOOL (8, 15 )  
BLUE HILL HIGH SCHOOL (3, 4 )  
BOONE CENTRAL HIGH SCHOOL (1, 1 )  
CAMBRIDGE HIGH SCHOOL (1, 3 )  
CENTRAL CATHOLIC HIGH SCHOOL (3, 6 )  
CENTRAL CITY HIGH SCHOOL (16, 31 )  
CENTRAL VALLEY HIGH SCHOOL (4, 5 )  
CLARKSON JR-SR HIGH SCHOOL (1, 1 )  
COLUMBUS HIGH SCHOOL (30, 66 )  
COZAD HIGH SCHOOL (4, 14 )  
CREIGHTON COMMUNITY HIGH SCH (5, 6 )  
CROSS COUNTY HIGH SCHOOL (6, 11 )  
DAVID CITY SECONDARY SCHOOL (1, 2 )  
DONIPHAN-TRUMBULL SECONDARY (1, 2 )

EAST BUTLER HIGH SCHOOL (2, 6 )  
ELBA SECONDARY SCHOOL (1, 4 )  
ELGIN HIGH SCHOOL (2, 4 )  
ELM CREEK HIGH SCHOOL (7, 15 )  
ELWOOD HIGH SCHOOL (1, 1 )  
EUSTIS-FARNAM HIGH SCHOOL (1, 2 )  
FRANKLIN SECONDARY SCHOOL (5, 16 )  
FULLERTON HIGH SCHOOL (3, 7 )  
GIBBON HIGH SCHOOL (9, 16 )  
GRAND ISLAND SENIOR HIGH SCH (159, 319 )  
HAMPTON HIGH SCHOOL (5, 9 )  
HARVARD HIGH SCHOOL (9, 16 )  
HASTINGS SENIOR HIGH SCHOOL (28, 40 )  
HIGH PLAINS COMMUNITY HIGH SCH (1, 2 )  
HOLDREGE HIGH SCHOOL (7, 10 )  
HOME SCHOOL (2, 3 )  
HUMPHREY JR-SR HIGH SCHOOL (3, 11 )  
KEARNEY SR HIGH SCHOOL (20, 30 )  
LAKEVIEW HIGH SCHOOL (7, 19 )  
LAWRENCE-NELSON HIGH SCHOOL (10, 33 )  
LEIGH HIGH SCHOOL (5, 24 )  
LEXINGTON HIGH SCHOOL (147, 298 )  
LITCHFIELD HIGH SCHOOL (2, 8 )  
LOUP CITY HIGH SCHOOL (1, 5 )  
MINDEN HIGH SCHOOL (1, 2 )  
NORTHWEST HIGH SCHOOL (16, 52 )  
ORD JR-SR HIGH SCHOOL (9, 23 )  
OVERTON HIGH SCHOOL (1, 2 )  
PALMER JUNIOR-SENIOR HIGH (5, 17 )  
PLEASANTON HIGH SCHOOL (8, 18 )

**CENTRAL COMMUNITY COLLEGE (cont)**

POPE JOHN XXIII HIGH SCHOOL (1, 2 )  
RAVENNA SENIOR HIGH (6, 20 )  
RED CLOUD HIGH SCHOOL (7, 11 )  
RIVERSIDE HIGH SCHOOL (5, 7 )  
SCOTUS CENTRAL CATHOLIC (3, 9 )  
S-E-M JR/SR HIGH SCHOOL (5, 13 )  
SHELBY-RISING CITY HIGH SCHOOL (3, 6 )  
SHELTON HIGH SCHOOL (5, 9 )  
SILVER LAKE HIGH SCHOOL (1, 1 )  
SOUTHERN VALLEY JR/SR HIGH (2, 3 )  
ST EDWARD HIGH SCHOOL (8, 14 )  
ST FRANCIS HIGH SCHOOL (2, 7 )  
ST PAUL HIGH SCHOOL (2, 6 )  
SUTTON SECONDARY SCHOOL (2, 5 )  
TWIN RIVER SR HIGH SCHOOL (3, 6 )  
WILCOX-HILDRETH HIGH SCHOOL (6, 13 )  
WOOD RIVER RURAL HIGH SCHOOL (6, 19 )

**CHADRON STATE COLLEGE (3)**

CHADRON SENIOR HIGH SCHOOL (17, 36 )  
GORDON-RUSHVILLE HIGH SCHOOL (1, 2 )  
SCOTTSBLUFF SENIOR HIGH SCHOOL (27, 30 )

**CONCORDIA UNIVERSITY (4)**

BLUE HILL HIGH SCHOOL (1, 1 )  
HOME SCHOOL (3, 3 )  
LINCOLN SOUTHWEST HIGH SCHOOL (1, 2 )  
SEWARD HIGH SCHOOL (5, 9 )

**LITTLE PRIEST TRIBAL COLLEGE (3)**

BANCROFT-ROSALIE JR/SR HIGH SCHOOL (1, 1 )  
HOMER HIGH SCHOOL (3, 7 )  
WINNEBAGO HIGH SCHOOL (13, 37 )

**MIDLAND UNIVERSITY (5)**

OMAHA BRYAN HIGH SCHOOL (35, 52 )  
OMAHA BURKE HIGH SCHOOL (2, 2 )  
OMAHA CENTRAL HIGH SCHOOL (1, 1 )  
OMAHA SOUTH MAGNET HIGH SCHOOL (55, 75 )  
SKUTT CATHOLIC HIGH SCHOOL (1, 1 )

**MID-PLAINS COMMUNITY COLLEGE (24)**

ANSELMO-MERNA HIGH SCHOOL (1, 2 )  
ARCADIA HIGH SCHOOL (1, 1 )  
BROKEN BOW HIGH SCHOOL (11, 22 )  
CALLAWAY HIGH SCHOOL (3, 11 )  
CENTRAL CITY HIGH SCHOOL (1, 2 )  
CHASE COUNTY HIGH SCHOOL (1, 3 )  
CLARKSON JR-SR HIGH SCHOOL (1, 1 )  
DUNDY CO STRATTON HIGH SCHOOL (6, 17 )  
EUSTIS-FARNAM HIGH SCHOOL (2, 4 )  
GERING HIGH SCHOOL (1, 4 )  
HAYES CENTER SECONDARY SCHOOL (1, 1 )  
HERSHEY HIGH SCHOOL (2, 4 )  
MAXWELL HIGH SCHOOL (6, 17 )  
MC COOK SENIOR HIGH SCHOOL (1, 5 )  
MULLEN HIGH SCHOOL (3, 5 )  
NORTH PLATTE HIGH SCHOOL (15, 41 )  
PAXTON HIGH SCHOOL (1, 1 )  
PERKINS COUNTY HIGH SCHOOL (3, 5 )  
SOUTHWEST JR/SR HIGH SCHOOL (1, 5 )  
ST PATRICK'S JR-SR HIGH SCHOOL (2, 2 )  
STAPLETON HIGH SCHOOL (1, 1 )  
SUTHERLAND HIGH SCHOOL (2, 6 )  
THEDFORD HIGH SCHOOL (3, 12 )  
VALENTINE HIGH SCHOOL (7, 28 )



**NEBRASKA COLLEGE OF TECHNICAL AGRICULTURE (5)**

AINSWORTH HIGH SCHOOL (1, 1 )  
 GORDON-RUSHVILLE HIGH SCHOOL (1, 1 )  
 HAYES CENTER SECONDARY SCHOOL (1, 1 )  
 STANTON HIGH SCHOOL (1, 1 )  
 WHEELER CENTRAL HIGH (1, 1 )

**NEBRASKA INDIAN COMMUNITY COLLEGE (3)**

BANCROFT-ROSALIE JR/SR HIGH SCHOOL (5, 8 )  
 HOMER HIGH SCHOOL (1, 1 )  
 NIOBRARA SECONDARY SCHOOL (13, 17 )

**NEBRASKA WESLEYAN UNIVERSITY (47)**

ALMA HIGH SCHOOL (4, 6 )  
 BANCROFT-ROSALIE JR/SR HIGH SCHOOL (1, 1 )  
 BISHOP NEUMANN HIGH SCHOOL (1, 1 )  
 BRIDGEPORT HIGH SCHOOL (8, 8 )  
 CENTRAL VALLEY HIGH SCHOOL (4, 8 )  
 COLUMBUS HIGH SCHOOL (4, 4 )  
 CONESTOGA JR/SR HIGH SCHOOL (2, 5 )  
 ELKHORN HIGH SCHOOL (1, 2 )  
 FILLMORE CENTRAL HIGH SCHOOL (1, 2 )  
 FRANKLIN SECONDARY SCHOOL (4, 8 )  
 GUARDIAN ANGELS CENTRAL CATHOLIC HS (1, 4 )  
 HAMPTON HIGH SCHOOL (2, 2 )  
 HASTINGS SENIOR HIGH SCHOOL (3, 6 )  
 HAY SPRINGS HIGH SCHOOL (2, 2 )  
 LAKEVIEW HIGH SCHOOL (1, 1 )  
 LINCOLN EAST HIGH SCHOOL (12, 23 )  
 LINCOLN HIGH SCHOOL (61, 118 )  
 LINCOLN NORTH STAR HIGH SCHOOL (85, 156 )  
 LINCOLN NORTHEAST HIGH SCHOOL (4, 6 )  
 LINCOLN NORTHWEST HIGH SCHOOL (5, 5 )  
 LINCOLN SOUTHEAST HIGH SCHOOL (10, 26 )  
 LINCOLN SOUTHWEST HIGH SCHOOL (2, 2 )  
 MARIAN HIGH SCHOOL (7, 8 )  
 MERCY HIGH SCHOOL (5, 5 )

MULLEN HIGH SCHOOL (1, 1 )  
 NORRIS HIGH SCHOOL (8, 12 )  
 NORTHEAST SECONDARY SCHOOL (4, 7 )  
 PAPHILLION-LA VISTA SENIOR HIGH (2, 2 )  
 PAPHILLION-LA VISTA SOUTH H S (2, 3 )  
 PIUS X HIGH SCHOOL (5, 7 )  
 PLATTSMOUTH HIGH SCHOOL (4, 4 )  
 RED CLOUD HIGH SCHOOL (2, 2 )  
 RIVERSIDE HIGH SCHOOL (4, 8 )  
 S-E-M JR/SR HIGH SCHOOL (3, 3 )  
 SEWARD HIGH SCHOOL (1, 1 )  
 SIDNEY HIGH SCHOOL (9, 9 )  
 SIOUX COUNTY HIGH SCHOOL (1, 1 )  
 SOUTH SIOUX SENIOR HIGH SCHOOL (44, 44 )  
 SOUTHERN VALLEY JR/SR HIGH (3, 7 )  
 SPRINGFIELD PLATTEVIEW COMMUNITY SCHOOLS (3, 5 )  
 STUART HIGH SCHOOL (8, 9 )  
 THAYER CENTRAL HIGH SCHOOL (1, 3 )  
 VALENTINE HIGH SCHOOL (1, 2 )  
 WAVERLY HIGH SCHOOL (3, 8 )  
 WAYNE HIGH SCHOOL (5, 10 )  
 WEST POINT-BEEMER HIGH SCHOOL (3, 5 )  
 WESTSIDE HIGH SCHOOL (3, 3 )

**NORTHEAST COMMUNITY COLLEGE (51)**

AINSWORTH HIGH SCHOOL (12, 37 )  
 BANCROFT-ROSALIE JR/SR HIGH SCHOOL (6, 12 )  
 BATTLE CREEK HIGH SCHOOL (7, 22 )  
 BLOOMFIELD JR-SR HIGH SCHOOL (4, 9 )  
 BOONE CENTRAL HIGH SCHOOL (5, 7 )  
 BOYD COUNTY HIGH SCHOOL (13, 45 )  
 BURWELL JR-SR HIGH SCHOOL (12, 25 )  
 CENTRAL VALLEY HIGH SCHOOL (1, 1 )  
 CHAMBERS HIGH SCHOOL (3, 7 )  
 CREIGHTON COMMUNITY HIGH SCH (7, 27 )  
 ELGIN HIGH SCHOOL (1, 1 )  
 EMERSON-HUBBARD HIGH SCHOOL (6, 16 )

**NORTHEAST COMMUNITY COLLEGE (cont.)**

GUARDIAN ANGELS CENTRAL CATHOLIC HS (5, 20 )  
HARTINGTON-NEWCASTLE HIGH SCHOOL (9, 28 )  
HAY SPRINGS HIGH SCHOOL (1, 1 )  
HOMER HIGH SCHOOL (3, 6 )  
HUMPHREY JR-SR HIGH SCHOOL (1, 7 )  
KEYA PAHA COUNTY HIGH SCHOOL (1, 2 )  
LAUREL-CONCORD-COLERIDGE HIGH SCHOOL (1, 1 )  
MADISON HIGH SCHOOL (15, 30 )  
MULLEN HIGH SCHOOL (1, 1 )  
NELIGH-OAKDALE JR/SR HIGH SCH (3, 6 )  
NEWMAN GROVE HIGH SCHOOL (6, 12 )  
NIOBRARA SECONDARY SCHOOL (12, 28 )  
NORFOLK CATHOLIC HIGH SCHOOL (6, 7 )  
NORFOLK SENIOR HIGH SCHOOL (68, 134 )  
NORTH BEND CENTRAL JR/SR HIGH (1, 1 )  
NORTHEAST SECONDARY SCHOOL (12, 31 )  
OAKLAND-CRAIG SENIOR HIGH (6, 15 )  
O'NEILL HIGH SCHOOL (8, 25 )  
PALMER JUNIOR-SENIOR HIGH (1, 2 )  
PENDER HIGH SCHOOL (7, 23 )  
PIERCE JR/SR HIGH SCHOOL (4, 5 )  
PLAINVIEW SECONDARY SCHOOL (6, 10 )  
PONCA HIGH SCHOOL (3, 7 )  
ROCK COUNTY HIGH SCHOOL (7, 21 )  
SOUTH SIOUX SENIOR HIGH SCHOOL (52, 73 )  
STANTON HIGH SCHOOL (5, 7 )  
STUART HIGH SCHOOL (15, 43 )  
SUMMERLAND PUBLIC SCHOOL (7, 10 )  
TEKAMAH-HERMAN HIGH SCHOOL (5, 8 )  
VALENTINE HIGH SCHOOL (1, 1 )  
VERDIGRE HIGH SCHOOL (6, 11 )  
WAKEFIELD HIGH SCHOOL (4, 9 )  
WAUSA HIGH SCHOOL (3, 10 )  
WAYNE HIGH SCHOOL (3, 3 )  
WEST HOLT HIGH SCHOOL (20, 50 )  
WEST POINT-BEEMER HIGH SCHOOL (25, 60 )

WHEELER CENTRAL HIGH (1, 1 )  
WISNER-PILGER HIGH SCHOOL (11, 28 )  
WYNOT HIGH SCHOOL (12, 27 )

**PERU STATE COLLEGE (15)**

AURORA HIGH SCHOOL (2, 3 )  
BEATRICE HIGH SCHOOL (14, 28 )  
CRETE HIGH SCHOOL (4, 7 )  
CROSS COUNTY HIGH SCHOOL (5, 10 )  
ELKHORN SOUTH HIGH SCHOOL (1, 1 )  
HTRS HIGH SCHOOL (1, 1 )  
JOHNSON CO CENTRAL HIGH SCHOOL (1, 2 )  
MERIDIAN HIGH SCHOOL (1, 3 )  
NEBRASKA CITY HIGH SCHOOL (1, 1 )  
NORTH BEND CENTRAL JR/SR HIGH (8, 16 )  
RIVERSIDE HIGH SCHOOL (2, 3 )  
SOUTHERN HIGH SCHOOL (2, 2 )  
TRI COUNTY JR-SR HIGH SCHOOL (11, 20 )  
WAUSA HIGH SCHOOL (1, 1 )  
YORK HIGH SCHOOL (11, 12 )

**SOUTHEAST COMMUNITY COLLEGE (34)**

BEATRICE HIGH SCHOOL (12, 22 )  
CONESTOGA JR/SR HIGH SCHOOL (3, 3 )  
CRETE HIGH SCHOOL (1, 1 )  
DESHLER HIGH SCHOOL (7, 11 )  
FAIRBURY JR-SR HIGH SCHOOL (9, 28 )  
FALLS CITY SENIOR HIGH (19, 51 )  
FILLMORE CENTRAL HIGH SCHOOL (1, 1 )  
FREEMAN HIGH SCHOOL (1, 1 )  
HTRS HIGH SCHOOL (2, 2 )  
JOHNSON-BROCK HIGH SCHOOL (3, 13 )  
LINCOLN NORTH STAR HIGH SCHOOL (8, 11 )  
LINCOLN NORTHEAST HIGH SCHOOL (2, 3 )  
LINCOLN NORTHWEST HIGH SCHOOL (1, 1 )  
LINCOLN SOUTHEAST HIGH SCHOOL (3, 7 )  
MALCOLM JR/SR HIGH SCHOOL (1, 1 )

**SOUTHEAST COMMUNITY COLLEGE (cont.)**

MCCOOL JUNCTION JR-SR HIGH SCH (1, 1 )  
 MEAD HIGH SCHOOL (1, 2 )  
 MERIDIAN HIGH SCHOOL (1, 2 )  
 MILFORD HIGH SCHOOL (5, 11 )  
 NORRIS HIGH SCHOOL (4, 5 )  
 PALMYRA JR-SR HIGH SCHOOL (2, 3 )  
 PAWNEE CITY SECONDARY SCHOOL (3, 8 )  
 PIUS X HIGH SCHOOL (1, 1 )  
 PLATTSMOUTH HIGH SCHOOL (1, 1 )  
 RAYMOND CENTRAL JR/SR HIGH (2, 2 )  
 SEWARD HIGH SCHOOL (7, 10 )  
 SOUTHERN HIGH SCHOOL (7, 15 )  
 STERLING HIGH SCHOOL (5, 8 )  
 THAYER CENTRAL HIGH SCHOOL (7, 12 )  
 WAHOO HIGH SCHOOL (7, 20 )  
 WAVERLY HIGH SCHOOL (1, 2 )  
 WEEPING WATER HIGH SCHOOL (1, 2 )  
 YORK HIGH SCHOOL (40, 78 )  
 YUTAN HIGH SCHOOL (1, 6 )

**UNIVERSITY OF NEBRASKA AT KEARNEY (6)**

CENTRAL CITY HIGH SCHOOL (6, 7 )  
 ELWOOD HIGH SCHOOL (4, 8 )  
 GIBBON HIGH SCHOOL (6, 12 )  
 KEARNEY SR HIGH SCHOOL (8, 10 )  
 LEXINGTON HIGH SCHOOL (30, 30 )  
 MINDEN HIGH SCHOOL (1, 1 )

**UNIVERSITY OF NEBRASKA – LINCOLN (3)**

GORDON-RUSHVILLE HIGH SCHOOL (2, 2 )  
 LINCOLN SOUTHWEST HIGH SCHOOL (1, 1 )  
 PIUS X HIGH SCHOOL (1, 1 )

**UNIVERSITY OF NEBRASKA AT OMAHA (26)**

BELLEVUE EAST SR HIGH SCHOOL (10, 25 )  
 BELLEVUE WEST SR HIGH SCHOOL (2, 10 )

BENNINGTON SECONDARY SCHOOL (1, 3 )  
 CREIGHTON PREPARATORY SCHOOL (2, 3 )  
 DANIEL J GROSS CATHOLIC HIGH (3, 4 )  
 MARIAN HIGH SCHOOL (3, 4 )  
 MERCY HIGH SCHOOL (1, 1 )  
 MILLARD NORTH HIGH SCHOOL (3, 7 )  
 MILLARD SOUTH HIGH SCHOOL (4, 12 )  
 MILLARD WEST HIGH SCHOOL (4, 7 )  
 OMAHA BENSON MAGNET HIGH SCHOOL (3, 7 )  
 OMAHA BRYAN HIGH SCHOOL (98, 168 )  
 OMAHA BUENA VISTA HIGH SCHOOL (25, 37 )  
 OMAHA BURKE HIGH SCHOOL (3, 7 )  
 OMAHA CENTRAL HIGH SCHOOL (40, 74 )  
 OMAHA NORTH MAGNET HIGH SCHOOL (23, 50 )  
 OMAHA NORTHWEST MAGNET HIGH SCHOOL (2, 8 )  
 OMAHA SOUTH MAGNET HIGH SCHOOL (147, 212 )  
 OMAHA WESTVIEW HIGH SCHOOL (2, 2 )  
 PAPIILLION-LA VISTA SENIOR HIGH (15, 32 )  
 PAPIILLION-LA VISTA SOUTH H S (6, 11 )  
 PLATTSMOUTH HIGH SCHOOL (1, 1 )  
 RALSTON HIGH SCHOOL (9, 15 )  
 SKUTT CATHOLIC HIGH SCHOOL (1, 1 )  
 SPRINGFIELD PLATTEVIEW COMMUNITY SCHOOLS (3, 4 )  
 WESTSIDE HIGH SCHOOL (19, 43 )

**WAYNE STATE COLLEGE (33)**

AURORA HIGH SCHOOL (1, 1 )  
 BANCROFT-ROSALIE JR/SR HIGH SCHOOL (1, 1 )  
 BOONE CENTRAL HIGH SCHOOL (7, 15 )  
 CHAMBERS HIGH SCHOOL (1, 1 )  
 COLUMBUS HIGH SCHOOL (6, 7 )  
 CREIGHTON COMMUNITY HIGH SCH (2, 2 )  
 DONIPHAN-TRUMBULL SECONDARY (1, 2 )  
 DUNDY CO STRATTON HIGH SCHOOL (1, 2 )  
 ELGIN HIGH SCHOOL (2, 2 )  
 FULLERTON HIGH SCHOOL (4, 5 )

**WAYNE STATE COLLEGE (cont.)**

GRAND ISLAND SENIOR HIGH SCH (265, 445 )  
GUARDIAN ANGELS CENTRAL CATHOLIC HS (1, 3 )  
HARTINGTON-NEWCASTLE HIGH SCHOOL (3, 3 )  
HARVARD HIGH SCHOOL (4, 4 )  
MINDEN HIGH SCHOOL (3, 3 )  
NORFOLK CATHOLIC HIGH SCHOOL (1, 1 )  
NORFOLK SENIOR HIGH SCHOOL (9, 14 )  
NORTHEAST SECONDARY SCHOOL (7, 7 )  
OAKLAND-CRAIG SENIOR HIGH (3, 4 )  
PENDER HIGH SCHOOL (3, 7 )  
PIERCE JR/SR HIGH SCHOOL (2, 3 )  
PONCA HIGH SCHOOL (8, 9 )  
RAVENNA SENIOR HIGH (2, 2 )  
RIVERSIDE HIGH SCHOOL (2, 3 )  
SCOTUS CENTRAL CATHOLIC (1, 1 )  
SHELTON HIGH SCHOOL (1, 1 )  
SOUTH SIOUX SENIOR HIGH SCHOOL (42, 48 )  
ST EDWARD HIGH SCHOOL (1, 1 )  
TWIN RIVER SR HIGH SCHOOL (1, 2 )  
WAKEFIELD HIGH SCHOOL (2, 2 )  
WAUSA HIGH SCHOOL (2, 2 )  
WAYNE HIGH SCHOOL (9, 15 )  
WEST POINT-BEEMER HIGH SCHOOL (13, 18 )

**WESTERN NEBRASKA COMMUNITY COLLEGE (15)**

ALLIANCE HIGH SCHOOL (3, 6)  
BANNER COUNTY HIGH SCHOOL (4, 6)  
BRIDGEPORT HIGH SCHOOL (11, 18)  
CHADRON SENIOR HIGH SCHOOL (2, 2)  
CODY-KILGORE HIGH SCHOOL (1, 1)  
CRAWFORD HIGH SCHOOL (5, 9)  
GARDEN COUNTY HIGH SCHOOL (1, 2)  
GERING HIGH SCHOOL (33, 87)  
GORDON-RUSHVILLE HIGH SCHOOL (9, 24)  
HAY SPRINGS HIGH SCHOOL (1, 1)  
LEYTON HIGH SCHOOL (1, 1)  
MINATARE HIGH SCHOOL (6, 10)  
MITCHELL SECONDARY SCHOOL (3, 4)  
SCOTTSBLUFF SENIOR HIGH SCHOOL (140, 384)  
SIDNEY HIGH SCHOOL (2, 4)

## Access College Early 2022-23 Courses Taken by Scholarship Recipients

College (number of different subject areas)  
Subject Area (number of scholarships)

### **BRYAN COLLEGE OF HEALTH (6)**

Biomedical Sciences (3)  
Communications (1)  
Health Professions (14)  
Medical Terminology (9)  
Philosophy (8)  
Sociology (2)

### **CENTRAL COMMUNITY COLLEGE (37)**

Accounting (4)  
Adv Mfg Design Tech (15)  
Agriculture Sciences (9)  
Art (2)  
Auto Body (50)  
Biological Sciences (38)  
Business Tech (9)  
Business Admin (18)  
Chemistry (33)  
Construction Tech (39)  
Criminal Justice (80)  
Drafting & Design Tech (36)  
Early Childhood (3)  
Economics (12)  
Electronics (31)  
English (259)  
Entrepreneurship (1)  
Health Occupations (112)  
History (46)  
Human Services (1)  
Humanities (7)

Information Tech (20)  
Mathematics (201)  
Media Arts (2)  
Media Arts (5)  
Music (38)  
Nutrition (10)  
Personal Development (2)  
Philosophy (1)  
Physical Education (5)  
Political Science (7)  
Psychology (70)  
Sociology (37)  
Spanish (5)  
Speech (107)  
Theatre (1)  
Welding Technology (99)

### **CHADRON STATE COLLEGE (10)**

Accounting (2)  
Economics (1)  
Education (3)  
Finance (4)  
Health, Phys Ed & Rec (3)  
History (6)  
Marketing/Entrepreneurship (5)  
Mathematics (22)  
Nutrition & Dietetics (1)  
Psychology (21)

**CONCORDIA UNIVERSITY (7)**

Business Admin (1)  
Chemistry (1)  
English (5)  
History (2)  
Mathematics (1)  
Science (1)  
Spanish (4)

**LITTLE PRIEST TRIBAL COLLEGE (6)**

Education (1)  
English (16)  
Music (6)  
Native American Studies (7)  
Psychology (7)  
Sociology (8)

**MIDLAND UNIVERSITY (3)**

Chemistry (1)  
Composition (1)  
History (129)

**MID-PLAINS COMMUNITY COLLEGE (22)**

Accounting (6)  
Agriculture (2)  
Art (4)  
Biology (5)  
Building Construction Tech (4)  
Business (8)  
Business Office Tech (1)  
Criminal Justice (4)  
Economics (4)  
Education (2)  
English (52)  
History (14)  
Humanities (1)  
Mathematics (36)

Nursing Assistant (6)  
Philosophy (3)  
Physical Education (1)  
Physics (2)  
Political Science (4)  
Psychology (18)  
Sociology (9)  
Speech (14)

**NEBRASKA COLLEGE OF TECHNICAL AGRICULTURE (3)**

Agribusiness Mngt Systems (1)  
Animal Science (3)  
Vet Technology (1)

**NEBRASKA INDIAN COMMUNITY COLLEGE (8)**

Biology (2)  
Business (4)  
English (7)  
Geography (1)  
History (4)  
Information Tech (1)  
Native American Studies (6)  
Speech (1)

**NEBRASKA WESLEYAN UNIVERSITY (17)**

Art (2)  
Art History (2)  
Biology (12)  
Business Admin (17)  
Chemistry (24)  
Communication Studies (4)  
Economics (34)  
English (209)  
French (9)  
Geography (1)  
German (2)  
History (135)

**NEBRASKA WESLEYAN UNIVERSITY (cont.)**

Mathematics (53)  
Political Science (23)  
Psychology (20)  
Religion (4)  
Spanish (14)

**NORTHEAST COMMUNITY COLLEGE (32)**

Accounting (11)  
Administrative Professional (3)  
Agriculture (4)  
Art (1)  
Biology (26)  
Building Construction (12)  
Business (3)  
Criminal Justice (8)  
Early Childhood (14)  
Economics (19)  
Education (3)  
English (193)  
Geography (10)  
Graphic Design (1)  
Health Education (64)  
Health, Phys Ed & Rec (32)  
History (51)  
Information Tech (24)  
Mathematics (150)  
Music (4)  
Nurse Aid (61)  
Nursing (1)  
Nutrition (2)  
Paramedic (2)  
Physics (1)  
Political Science (21)  
Psychology (94)  
Sociology (32)  
Spanish (19)

Speech (76)  
Utility Line (6)  
Welding Technology (25)

**PERU STATE COLLEGE (9)**

Biology (10)  
English (51)  
History (1)  
Mathematics (20)  
Psychology (7)  
Sociology (3)  
Speech (14)  
Statistics (2)  
Theatre (2)

**SOUTHEAST COMMUNITY COLLEGE (30)**

Accounting (1)  
Agriculture (15)  
Automotive Tech (2)  
Bioscience (7)  
Business (7)  
Chemistry (6)  
Computer Information Tech (1)  
Criminal Justice (9)  
Culinary & Hospitality (3)  
Early Childhood (7)  
Economics (4)  
Education (5)  
English (53)  
Entrepreneurship (3)  
Health (20)  
History (29)  
Human Services (3)  
Mathematics (60)  
Medical Assisting (3)  
Medical Lab Tech (1)  
Music (3)

**SOUTHEAST COMMUNITY COLLEGE (cont.)**

Philosophy (1)  
Political Science (11)  
Psychology (38)  
Religious Studies (1)  
Sociology (6)  
Spanish (2)  
Speech (32)  
Truck Driver Training (1)  
Welding Technology (11)

**UNIVERSITY OF NEBRASKA AT KEARNEY (7)**

Art (2)  
Biology (4)  
English (26)  
History (2)  
Political Science (2)  
Spanish (30)  
Teacher Education (2)

**UNIVERSITY OF NEBRASKA – LINCOLN (3)**

Mathematics (1)  
Russian (1)  
Sociology (2)

**UNIVERSITY OF NEBRASKA AT OMAHA (29)**

Art (3)  
Aviation (2)  
Biology (48)  
Biomechanics (10)  
Communication Studies (2)  
Computer Science (26)  
Criminal Justice (1)  
Cyber Security (1)  
Economics (19)  
English (107)  
French (10)

Geography (81)  
Health & Kinesiology (15)  
History (25)  
Information Science & Tech (21)  
Kinesiology (1)  
Latin American Studies (1)  
Mathematics (47)  
Music (2)  
Physics (43)  
Political Science (112)  
Psychology (15)  
Public Health & Behavior (19)  
Religion (5)  
Sociology (27)  
Spanish (67)  
Special Education (2)  
Teacher Education (35)  
Writer's Workshop (1)

**WAYNE STATE COLLEGE (19)**

Biology/Life Sciences (23)  
Business (7)  
Chemistry (1)  
Communication Arts (70)  
Earth Science (12)  
Education (68)  
English (127)  
Health Science (14)  
History (22)  
Industrial Tech (1)  
Mathematics (76)  
Music (5)  
Physical Education (4)  
Physical Science (2)  
Physics (7)  
Political Science (61)  
Psychology (4)



**WAYNE STATE COLLEGE (cont.)**

Sociology (3)  
Spanish (129)

**WESTERN NEBRASKA COMMUNITY COLLEGE (31)**

Accounting (2)  
Advanced Mfg Tech (2)  
Art (4)  
Automotive Tech (20)  
Biological Sciences (28)  
Business Admin (6)  
Chemistry (3)  
Collision Repair Tech (28)  
Criminal Justice (29)  
Early Childhood (3)  
Economics (4)  
Education (6)  
Emergency Medical Services (4)  
Engineering (5)

English (88)  
Health Occupations (60)  
History (29)  
Human Services (8)  
Humanities (2)  
Information Tech (16)  
Mathematics (48)  
Medical Lab Tech (6)  
Nursing (0)  
Personal Development (7)  
Philosophy (1)  
Political Science (1)  
Psychology (27)  
Sociology (1)  
Spanish (29)  
Speech (4)  
Welding Technology (88)