

Southeast Community College
Report to the Legislature - 85-608
Sexual Harassment and Title IX Compliance
September 2021

Report; contents

Each public postsecondary institution shall electronically submit a report regarding sexual harassment and Title IX compliance to the Clerk of the Legislature and the Education Committee of the Legislature. The report shall include:

(a) Results of any campus climate survey related to sexual harassment;

The College has not conducted a student/employee survey specific to “sexual harassment.”

- Here is a link to the results/summary of the **Student Diversity and Climate Survey** from Fall 2020 (November 2020): <https://thehub.southeast.edu/IR/Documents/2020FA-student-climate-survey.pdf>
- This link takes you to the **Faculty and Staff Satisfaction and Climate Survey** from Spring 2020 (February 2020): <https://thehub.southeast.edu/IR/Documents/2020-Faculty-Staff-Survey-results.pdf>
- **Sexual Assault Statistics by Campus for 2017, 2018, 2019, 2020**

Beatrice Campus				
Type of Assault	2017	2018	2019	2020
Rape	0	0	0	0
Statutory Rape	0	0	0	0
Incest	0	0	0	0
Forcible Fondling	0	0	0	0
Hate Crime - Gender	0	0	0	0
Hate Crime – Sexual Orientation	0	0	0	0
Lincoln Campus				
Type of Assault	2017	2018	2019	2020
Rape	0	0	0	0
Statutory Rape	0	0	0	0
Incest	0	0	0	0
Forcible Fondling	0	0	1	0
Hate Crime - Gender	0	0	0	0
Hate Crime – Sexual Orientation	0	0	0	0
Milford Campus				
Type of Assault	2017	2018	2019	2020
Rape	0	0	0	0
Statutory Rape	0	0	0	0
Incest	0	0	0	0
Forcible Fondling	0	0	0	0
Hate Crime - Gender	0	0	0	0
Hate Crime – Sexual Orientation	0	0	0	0
Education Square				

Type of Assault	2017	2018	2019	2020
Rape	0	0	0	0
Statutory Rape	0	0	0	0
Incest	0	0	0	0
Forcible Fondling	0	0	0	0
Hate Crime - Gender	0	0	0	0
Hate Crime – Sexual Orientation	0	0	0	0

Jack Huck CEC

Type of Assault	2017	2018	2019	2020
Rape	0	0	0	0
Statutory Rape	0	0	0	0
Incest	0	0	0	0
Forcible Fondling	0	0	0	0
Hate Crime - Gender	0	0	0	0
Hate Crime – Sexual Orientation	0	0	0	0

All Learning Centers

Type of Assault	2017	2018	2019	2020
Rape	0	0	0	0
Statutory Rape	0	0	0	0
Incest	0	0	0	0
Forcible Fondling	0	0	0	0
Hate Crime - Gender	0	0	0	0
Hate Crime – Sexual Orientation	0	0	0	0

(b) Information related to the training provided to Title IX coordinators, investigators, and decisionmakers regarding sexual harassment;

All College staff responsible for Title IX implementation have received training from the Association of Title IX Administrators. The basic training includes process/procedures conduct investigations, interview parties, and write reports.

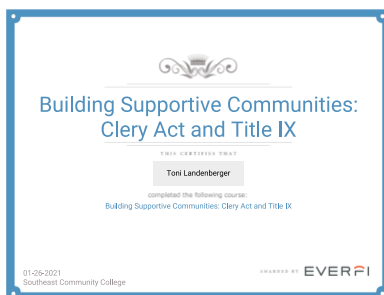
Title IX Training Materials:

- **[Title IX Training New Regulations and Procedures](#)**
- **[OCR Webinar on Due Process Protection Under the New Title IX Regulations](#)**
- **[The First Amendment and Title IX: An OCR Short Webinar](#)**
- **[How to Report Sexual Harassment Under Title IX](#)**
- **[Secretary DeVos Announces New Title IX Regulations](#)**
- **[New Title IX Protections Against Sexual Assault](#)**
- **[OCR Webinar: Title IX Regulations Addressing Sexual Harassment](#)**
- **[Conducting and Adjudicating Title IX Hearings: An OCR Training Webinar](#)**



Sample Certificates

Each employee with major responsibilities related to Title IX has retained copies of all relevant training completed. Certificates of Completion are available upon request



(c) Any policies, initiatives, or grievance procedures the postsecondary institution has adopted to address sexual harassment;

<https://www.southeast.edu/title-ix/>

https://www.southeast.edu/about_scc/diversity/guidelines_and_procedures/discriminatory_harassment/

• **Know your Title IX Rights/Sexual Violence Intervention & Prevention**

Title IX of the Education Amendments of 1972 (“Title IX”) prohibits discrimination based on sex, which includes sexual and relationship violence at any federally funded education program or activity. When the College receives a report of sexual and relationship violence or discrimination, it will respond in a prompt and equitable manner, consider and process every report based on facts and prohibit retaliation against anyone for raising complaints or participating in a process related to Title IX.

For more information about SCC’s Access, Equity & Diversity Office, visit <https://www.southeast.edu/diversity/>.

For any questions regarding Title IX, please contact: Jose J. Soto, Vice President of Access, Equity and Diversity and Title IX Administrator at 301 S 68th ST PL, 402-323-3412 or jsoto@southeast.edu.

If you have experienced any incidents of sexual misconduct, harassment, or violence, whether on- or off-campus, please know that you have rights, you have options, and support is available for you. This document is intended as an overview of various policies, procedures, resources, and supports. For more information regarding your rights and options visit <https://www.southeast.edu/pdfs/about-scc/diversity/rightsandreportingoptions.pdf>.

(d) Information on where the postsecondary institution's students and employees may receive immediate emergency assistance to address instances of sexual harassment;

[My Rights & Reporting Options | Southeast Community College](#); [Title IX Resources | Southeast Community College](#)

link to the Southeast Community College Sexual & Relationship Violence Rights & Reporting Options document: [Southeast Community College Sexual & Relationship Violence Rights & Reporting Options](#)

Title IX Resources

- [**Title IX Administration and Compliance Handbook for Students**](#)
- [**Title IX Administration and Compliance Handbook for Employees**](#)
- [**A Quick Guide to Title IX**](#)
- [**Title IX Flowchart**](#)
- [**Q&A on Campus Sexual Misconduct**](#) (September 22, 2017)
- [**What You Should Know About Consent**](#)

(e) Information on how the postsecondary institution's students and employees may report concerns of sexual harassment to the postsecondary institution

TIPS Reporting TIPS is an online reporting system used to securely and confidentially report accidents, injuries, and incidents that are suspicious, illegal, and/or concerning in nature within Southeast Community College. To access the TIPS reporting system, go to www.southeast.edu, and look for the TIPS logo at the bottom of the page. This is not an emergency reporting system. If this is an urgent matter, please immediately dial 911. Examples of incidents to report include, but are not limited to alcohol abuse, drug abuse, harassment, theft, academic dishonesty, threat of violence, etc. Bystander Awareness & Title IX Contact If you notice anything out of the ordinary or you witness someone being treated inappropriately, please feel empowered (as it is safe to do so) to verbally intervene. Do not enter a physical altercation. If there is a risk of immediate harm, please call 911 immediately. Follow up all interactions by using the TIPS reporting system. Sexual Misconduct Reporting If you believe that you or another person has been the subject of sexual misconduct or sex-based discrimination at or on SCC property or during College-sponsored activities or events, you may report the misconduct to the Title IX Coordinator, Jose Soto., at jsoto@southeast.edu or by calling 402-613-1181, or reporting via TIPS. If there is an immediate threat, contact 911. Title IX Title IX is the federal law prohibiting discrimination on the basis of sex in educational institutions receiving federal 2021-2022 Handbook Page 8 funds. Title IX forbids sex discrimination in all College student services and academic programs, including but limited to admissions, financial aid, academic advising, housing, athletics, recreational services, college residential life programs, health services, counseling and psychological services, classroom assignments, grading, and discipline. Questions about Title IX can be directed to the Title IX Coordinator or the Office of Civil Rights (OCR) (<http://www2.ed.gov/about/offices/list/ocr/index.html>) of the U. S. Department of Education. The Title IX Coordinator is available to meet with students, faculty and staff who believe sexual harassment or sexual misconduct has occurred. Contact: Jose J. Soto, J.D. Interim Title IX Coordinator Vice President of Institutional Compliance for Access/Equity/Diversity Southeast Community College Area Office 301 South 68th Street Place Lincoln, NE 68510 402-323-3412 Office 402-323-3420 FAX 402-613-1181 Cell

Syllabus Statement: SCC is committed to creating a safe learning environment for everyone. To this end, the College requires every Responsible Employee – your instructors included – to report incidents of sexual assault, sexual harassment, relationship violence, or stalking. If you disclose information relating to these types of incidents to any SCC employee (other than those designated as confidential resources such as advocates and counselors), they are obligated to report this information to the College’s Title IX Coordinator. Additional information regarding confidential and non-confidential reporting options at: <https://www.southeast.edu/rights-and-reporting-options/>

New Student Orientation (Week 4)

Week Four

Title IX (9) Education Amendment
Purpose of Amendment
Who is Covered

Violence Against Women Act
 Campus Clery Act
 Reporting Procedures
 Consent
 Actions Included Under Title IX, including sexual harassment, sexual assault, stalking, sexual exploitation and partner violence
 Campus Policies
 Alcohol Use Policy
 Smoking and E-Cigarette Policy
 Mental Health Resources
 CAPS Program
 Services CAPS Provides
 Wellness at SCC
 Student Activities and Facilities
 Stress & Holmes and Rahe Stress Scale
 Intercollegiate Athletics

(f) Information on resources, programs, and support available to the postsecondary institution's students and employees to address concerns of sexual harassment;

A number of local and national resources are available to provide information and assistance:

- **Nebraska Coalition to End Sexual and Domestic Violence:** Nebraska has a network of domestic violence and sexual assault programs ensure that a safety net of services are available across our state 24-hours a day. www.nebraskacoalition.org/
 - **Voices of Hope (Lancaster county)**
 - 24-Hour Crisis Line: (402) 475-7273
 - Email Address: info@voicesofhopelincn.org
 - Mailing Address: 2545 N St., Lincoln, NE 68510
 - Website: www.voicesofhopelincn.org
 - **Hope Crisis Center** (York, Seward, Fillmore, Saline, Gage, Thayer & Jefferson counties)
 - 24-Hour Crisis Line: 877-388-HOPE (4673)
 - Website: www.hopecrisiscenter.org
 - **The Bridge** (Saunders county)
 - 24-Hour Crisis Line: 888-721-4340; 402-727-7777
 - Website: www.bridgefromviolence.com
 - **Project Response** (Otoe, Johnson, Nemaha, Pawnee, & Richardson counties)
 - 24-Hour Crisis Line: 800-456-5764
 - Website: www.projectresponseinc.org
- **Lincoln Police Department's Victim Witness Unit:** provides information and support services to victims and witnesses of crime
 - (402) 441-7181
- **Friendship Home:** provides shelter and support for battered women and their children
 - (402) 437-9302

- **National Sexual Assault Hotline:** provides free, confidential counseling 24 hours a day from a national (not a local) service provider, that can help connect to local providers
 - On-line, 24-hour chat with a trained professional: online.rainn.org
 - 24-Hour Crisis Line: (800) 656-HOPE (4673)
- **Medical Treatment:**
 - Beatrice Comm. Hospital and Health Ctr; 4800 Hospital Pkwy; (402) 228-3344
 - Bryan LGH East Campus; 1600 S. 48th St., Lincoln, NE; (402) 481-1111
 - Bryan LGH West Campus; 2300 S. 16th St., Lincoln, NE; (402) 481-1111
 - CHI Health St. Elizabeth Medical Regional Ctr; 555 S. 70th St., Lincoln, NE; (402) 219-8000
 - Memorial Health Care Center; 300 North Columbia, Seward, NE; (402) 643-2971

Counseling, Mental Health, and Other Services

Every fall, in addition to the Annual Notifications of [Consumer Information](#) and [Student Right to Know](#), SCC provides information to students, staff, faculty and the general public information on how to report incidents of sexual assault, domestic violence, dating violence, and stalking with written notification of their rights and options, including the options for assistance as detailed above. Below is a list of services available for victims, both within the institution and in the community.

Confidential Resource: Counseling and Assistance Program (CAPS) at SCC. Please contact the office at (402) 437-2286, or by email at kjantzen@southeast.edu. SCC students are provided for up to 15 individual and 10 group sessions at no charge each academic year.

Nebraska Coalition to End Sexual and Domestic Violence: Nebraska has a network of domestic violence and sexual assault programs ensure that a safety net of services are available across our state 24-hours a day. www.nebraskacoalition.org/

- **Voices of Hope (Lancaster county)**
 - 24-Hour Crisis Line: (402) 475-7273
 - Email Address: info@voicesofhopelincoln.org
 - Mailing Address: 2545 N St., Lincoln, NE 68510
 - Website: www.voicesofhopelincoln.org
- **Hope Crisis Center** (York, Seward, Fillmore, Saline, Gage, Thayer & Jefferson counties)
 - 24-Hour Crisis Line: 877-388-HOPE (4673)
 - Website: www.hopecrisiscenter.org
- **The Bridge** (Saunders county)
 - 24-Hour Crisis Line: 888-721-4340; 402-727-7777
 - Website: www.bridgefromviolence.com
- **Project Response** (Otoe, Johnson, Nemaha, Pawnee, & Richardson counties)
 - 24-Hour Crisis Line: 800-456-5764
 - Website: www.projectresponseinc.org

Lincoln Police Department's Victim Witness Unit: provides information and support services to victims and witnesses of crime. (402) 441-7181

Friendship Home: provides shelter and support for battered women and their children. (402) 437-9302

Blue Valley Behavioral Health: A private, non-profit corporation serving 16 counties in southeast Nebraska for mental health and substance abuse services. 877-409-6600

National Sexual Assault Hotline: provides free, confidential counseling 24 hours a day from a national (not a local) service provider, that can help connect to local providers

- On-line, 24-hour chat with a trained professional: online.rainn.org
- 24-Hour Crisis Line: (800) 656-HOPE (4673)

Law Enforcement:

- Emergency - 911
- Beatrice Police - Non-emergency (402) 223-4080
- Lincoln Police - Non-emergency (402) 441-6000
- Milford Police - Non-emergency (402) 761-2772

Medical Treatment:

- Beatrice Community Hospital and Health Center; 4800 Hospital Parkway; (402) 228-3344
- Bryan LGH East Campus; 1600 S. 48th St., Lincoln, NE; (402) 481-1111
- Bryan LGH West Campus; 2300 S. 16th St., Lincoln, NE; (402) 481-1111
- CHI Health St. Elizabeth Medical Regional Center; 555 S. 70th St., Lincoln, NE; (402) 219-8000
- Memorial Health Care Center; 300 North Columbia, Seward, NE; (402) 643-2971

(g) Information on any of the postsecondary institution's student or employee-led organizations engaged in supporting victims of sexual harassment;

The College does not have student or employee-led organizations engaged in supporting victims of sexual harassment. The College's Counseling Assistance Program provides counseling, support, and referral services to students. Employees are referred to the College's employee assistance program and other community agencies for counseling, support and assistance.

Support: Support is available via campus and off-campus resources.

- The **Counseling and Assistance Program (CAPS)** is available to all SCC students;
- SCC partners with a number of community-based resources to provide support;

https://www.southeast.edu/about_scc/diversity/guidelines_and_procedures/discriminatory_harassment/

(h) Any agreement between the postsecondary institution and a local law enforcement agency or the county attorney related to addressing instances of sexual harassment.

While the College maintains effective working relationships with law enforcement agencies in the 15-county community college district, only one campus (Milford) has a formal agreement with the Milford Police for safety/security/law enforcement/investigative services for crimes committed on campus.



SCC Annual Safety,
Security and
Crime/Fire
Statistics Report

Contents

CHAPTER 1 ANNUAL SECURITY REPORT	6
Designated Safety Personnel	7
Engagement with Local Law Enforcement	7
SCC Safety/Security Responsibilities	8
Reporting Criminal Actions or Crimes	8
Reporting Exemption	9
SCC’s Counseling Assistance Program for Students (CAPS)	9
Reporting Sex Crimes, Sexual Misconduct and Civil Rights Violations	10
Reporting Hate Crimes	10
Voluntary Confidential Reporting	10
Off-Campus Jurisdiction	10
Non-Emergency Notification	11
Emergency Notifications and Timely Warnings	11
Emergency Response and Evacuation Procedures	12
Campus Safety and Security Website	12
Safety Drills	12
Informing Students about Safety and Security Procedures	13
Informing Employees about Safety and Security Procedures	13
Standard Response Protocol	13
Active Shooter or Active Threat on Campus	14
Off-Campus Threat	14
Tornado, Severe Weather Warning	14
Security and Access to Campus Facilities	14
Admittance to Residence Hall	15
Escort to Vehicle	15
Video Monitoring	15
Facilities and Landscape Maintenance	15
CHAPTER 2 SCC POLICIES, PROCEDURES, PREVENTION PROGRAMS AND RESOURCES --	16
Drug, Alcohol and Controlled Substance Policy	16
Student Educational and Disciplinary Sanctions	16
Employee Disciplinary Sanctions	17

SCC Alcohol and Drug Prevention Programing -----17
 Alcohol and Drug Education Assistance and Resources ----- 18
 Prevention Programs and Resources ----- 18
 Continuous Program Improvement ----- 23

Sexual Harassment/Violence Education Activities -----24
 Title IX, Campus SaVE Act----- 24

Reporting an Incident of Sexual Misconduct-----24
 Rights and Options ----- 24
 Options for Reporting----- 25
 Anonymous Reporting ----- 25
 SCC's Incident Reporting System - TIPS----- 25
 Contact a Responsible Employee ----- 25

Other Reporting Options -----26
 Retaliation----- 26
 Complaint and Investigation Procedures of Sexual Misconduct ----- 26

Sexual Assault Education and Prevention -----26

Other SCC Policies and Programs Affecting Safety-----27
 Residence Life ----- 27

Unacceptable Behavior -----28
 Harassment or Discrimination----- 28

Alcohol and Controlled Substances Information -----28

Safety and Security 24/7 Dorm Lockdown -----29
 Missing Student Notification----- 30

Weapons Policy -----30

CHAPTER 3 CRIME REPORTING AND ANNUAL STATISTICS ----- 31

SCC Geography and Crime Statistics for 2018, 2019, 2020-----32
 Beatrice Campus ----- 32
 Lincoln Campus----- 34
 Jack J. Huck Continuing Education and Entrepreneurship Center (CEC/ENT)----- 36
 Education Square ----- 38
 Milford Campus ----- 40
 Learning Centers----- 42

CHAPTER 4 CAMPUS FIRE SAFETY REPORT ----- 49

Campus Fire Safety Annual Compliance Report -----49
 Program Objectives----- 49
 Residence Halls Fire Prevention Policies and Procedures----- 50
 Fire Safety Education and Training Initiatives ----- 51

SCC Fire Statistics for 2018, 2019 and 2020 -----53

Glossary of Terms-----55

Appendix A – Safety Personnel -----59
 Beatrice ----- 59
 All Lincoln Campus Locations (8800 O St., ESQ, CEC/ENT) ----- 59
 Milford ----- 59
 Learning Centers----- 59

Local Law Enforcement Agencies-----59

Appendix B – Campus Security Authorities (CSAs) -----60

Advising and Counseling Service -----61

Appendix C “Reporting Sex Crimes, Sexual Misconduct, Civil Rights Violations and Hate Crimes -----62
 Milford Campus, York and Hebron Learning Centers----- 62

Appendix D – Emergency & Non-Emergency Notification Contacts-----63

Emergency Contacts/Responsible Employees -----63
 Non-Emergency Notification Contacts ----- 64
 Severe Weather Notification Team----- 64
 Escort to Vehicle ----- 65

Appendix E - Notifications Methods -----66

Appendix F – Safety Management Plan -----67

Appendix G – Alcohol and Drug Education, Assistance, and Resources -----73

This report was prepared by the Office of Access, Equity and Diversity, with support from the Student Affairs Office, the Safety and Security Office, and Human Resources in order to comply with the Clery Act (formerly known as the Federal Student Right-to-Know and Campus Security Act of 1990), published on 10/1/2020. The report describes security practices and procedures at Southeast Community and lists crime statistics for the most recent calendar year and the two preceding calendar years. This publication is intended to provide a general description of campus security arrangements, and not to serve as a contractual agreement between SCC and the recipient. Security procedures are subject to change without notice.



Dear students, employees and visitors,

Southeast Community College serves 15 counties in southeast Nebraska, although our students come from homes throughout the country and the world. Our state is a safe place to live, attend college and work, and we will make every effort to maintain that record in the future. However, even in southeast Nebraska, we must implement preventive measures and precautions to ensure the safety of our students and employees.

The crime rates at SCC locations are very low, but one person who experiences a crime against property or person is one too many. We address safety and security at our locations through prevention, in the hope that we can protect students, employees and visitors from any crime BEFORE it happens. Students, employees and visitors also are encouraged, however, to be responsible for their own security and the security of others.

Please read this publication carefully. It includes campus crime statistics and preventive measures instituted by the College, along with College policies regarding drug and alcohol use and weapons possession. If you have questions about this information, please contact the Assistant Campus Director/Dean of Students at the Beatrice, Lincoln or Milford locations. I would also welcome the opportunity to meet with any student, employee, parent, guardian, or visitor who wishes to discuss any safety or security issues with me.

Working together, SCC will continue to be a great, and safe, place to work and learn.

Sincerely,

Dr. Paul Illich, President

SCC Board of Governors -Kathy Boellstorff, Johnson; James J. Garver, Lincoln; Nancy A. Seim, Lincoln; Dale Kruse, Beatrice; Chuck Byers, McCool Junction; Keith Hammons, Weeping Water; James Sherwood, Lincoln; Neal Stenberg, Lincoln; Arlyn E. Uhrmacher, Lincoln; Ellen Weissinger, Lincoln; Kristin Yates, Lincoln; Linda Hartman, Faculty Representative, Lincoln (September 14, 2021)

Equal Opportunity/Non-Discrimination Policy - It is the policy of Southeast Community College to provide equal opportunity and nondiscrimination in all admission, attendance, and employment matters to all persons without regard to race, color, religion, sex, age, marital status, national origin, ethnicity, veteran status, sexual orientation, disability, or other factors prohibited by law or College policy. Inquiries concerning the application of Southeast Community College's policies on equal opportunity and nondiscrimination should be directed to the Vice President for Access/Equity/Diversity, SCC Area Office, 301 S. 68th Street Place, Lincoln, NE 68510, 402-323-3412, FAX 402-323-3420, or jsoto@southeast.edu.

Declaración de política sobre equidad/antidiscriminación - La política publica de Southeast Community College es de proveer equidad, y prohíbe discriminación, en todos asuntos referentes a la admisión, participación, y empleo contra toda persona por motivo de raza, color, religión, sexo, edad, estado civil, origen nacional, etnia, condición de veterano, orientación sexual, incapacidad, u otros factores prohibidos por ley o política del Colegio. Preguntas relacionadas a la política sobre equidad/antidiscriminación de Southeast Community College deben dirigirse a: Vice President for Access/Equity/Diversity, SCC Area Office, 301 S 68 Street Place, Lincoln, NE 68510, 402-323-3412, FAX 402-323-3420, o jsoto@southeast.edu. A0524 (08/15/16)

Chapter 1

Annual Security Report

Introduction

Southeast Community College (SCC) is a publicly-funded, multi-campus system of higher education with primary campuses in Beatrice, Lincoln and Milford. SCC has approximately 750 full-time employees and serves more than 33,000 credit and non-credit students annually. SCC's campuses have experienced a very low crime rate; however, the College recognizes the potential for escalating crime and believes that preventive measures and preparedness best ensure the safety of lives and the security of property.

The College's [2020-2024 Strategic Plan](#) incorporates SCC's commitment to improving readiness for emergencies at all College locations. The safety and security policies established for SCC and described in this report apply to all of its campuses and learning locations.

Report Purpose

The SCC Campus Safety and Security office prepares a log of reported crimes by date that details the date, time, location and disposition of reported incidents.¹

The Jeanne Clery Disclosure of Campus Security and Campus Crime Statistics Act, ([20 U.S.C., §1092](#)) and the Higher Education Opportunity Act (HEOA) ([20 U.S.C. §1011i](#)), require institutions of higher education to publish an annual report by October 1 containing three years of campus crime statistics.²

The Office of Access, Equity and Diversity³ prepares this annual report for SCC. The report provides prospective students and/or their parents or guardians, current students, and employees information regarding College policies, crime and fire statistics, safety tips, and

¹ The daily crime log, for the most recent 60 days, is open to public inspection upon request to Campus Administration during normal business hours, and is also available on the SCC website at <https://www.southeast.edu/crimelog/>. For entries older than 60 days, the daily crime log will be made available within two (2) business days of a request for public inspection.

² The annual statistics are prepared by collecting crime data from SCC Security records and incident reports, in addition to information on crime statistics for specified geographic locations from other local law enforcement agencies. Crime statistics are included in the Annual Security and Fire Report and submitted to the Department of Education.

³ Additional support is provided by the Student Affairs Office, the Safety and Security Office, and the Campus Directors.

emergency phone numbers. The report also provides an overview of some of the programs offered by the college that are meant to inform students, employees and applicants of the nature and number of crimes that occur on any SCC campus, Learning Centers, non-campus, and reasonably contiguous public property. A paper copy may be obtained from the Assistant Campus Director/Dean of Students at any of SCC's campuses.⁴

The full text of this report is posted to the SCC website at [Student Affairs/Safety, Security](#). All SCC employees, enrolled students, prospective students and prospective employees are notified the report is available; the report URL is also included in the notice.

Safety and Security at SCC

As part of a multi-campus system that includes Learning Centers throughout a 15-county service area, safety and security is the responsibility of everyone at all times. Everyone on an SCC Campus or Learning Center is subject to the laws established by governmental agencies and rules established by the College.

Designated Safety Personnel

SCC has several employees who serve as safety and security personnel and are responsible for overseeing and providing safety and security services for SCC. Lead administrative responsibility has been assigned to the Assistant Campus Directors (or designee) at each location for the following:

- enforcing institutional rules of conduct related to safety/security, and;
- referring potential or alleged violations of law to government authorities.

The designated safety personnel ([APPENDIX A](#)) maintain campus safety/security related documents, files, and materials; have a "[legitimate educational interest](#)" in reviewing student records/files; and are authorized to share security/safety-related materials with other College officials determined to have a [need to know](#) and with other outside third parties for purposes of safety, security and law enforcement.

Engagement with Local Law Enforcement

Local law enforcement officers may enter all campus locations to conduct official business as needed. Additionally, the officers may also patrol the campus, if requested, to assist SCC in deterring crime.

⁴ Crime statistics for SCC locations, local jurisdictions and other institutions nationwide can be found at <http://ope.ed.gov/security/>.

SCC Safety/Security Responsibilities

College safety/security personnel are responsible for maintaining a safe environment for students and to respond to reports of suspected criminal action taking place on campus.

College safety/security personnel do not have arrest authority, but will call for local law enforcement assistance when needed.

- All college personnel have the authority to ask students to show valid identification (e.g., current student card, driver's license, state identification card) and to call 911 when they believe an emergency exists (i.e. crime, fire, medical, etc.).
- The jurisdiction of the campus security personnel extends to all campuses and learning centers. Depending on the seriousness of a given situation, jurisdiction could extend to off-campus locations.

Campus Security Authorities (CSAs)

Crime reports may also be made to designated [Campus Security Authorities \(CSAs\)](#). ([Appendix B](#).)

Reporting Criminal Actions or Crimes

SCC expects students, visitors and employees to promptly report suspected crimes or criminal activity, suspicious behavior, or other emergencies at any SCC location, college-sanctioned event/organization, or off-campus crime involving an SCC student to local law enforcement by calling 911.

TIPS/Incident Reporting

SCC has established a confidential/anonymous reporting site, [TIPS](#), ([SCC TIPS Notification System](#)), which is a completely anonymous reporting system that may be used by students, faculty and community members to submit confidential and secure reports about suspicious incidents on any College-owned or College-operated facility or at any College-sponsored event or activity, either on or off campus.

TIPS is not an emergency reporting system. For medical emergencies or suspected crime, 911 should be called immediately.

Reportable incidents include but aren't limited to:

- Abuse/Neglect
- Accident/Injury
- Assault
- Bullying/Cyberbullying
- Drugs or Alcohol
- Harassment/Intimidation
- Medical Incident
- Possession of Weapons

- Suicide Risk
- Threats of Violence
- Vandalism
- Vehicle Accident/Incident

Reports of suspected criminal activity on SCC campuses will be reviewed and evaluated by security personnel and campus administrators. Appropriate action, including referral to local law enforcement authorities or other state or federal agencies will be taken to address criminal activity. Substantiated cases are adjudicated through either the city or county and/or through the College's disciplinary system.

Reporting Exemption

[Professional counselors](#) on college campuses may not be required by law to report crimes for inclusion into the Annual Security Report. Southeast Community College has no written policy that addresses counselors and clergy being encouraged to inform victims of the option to voluntarily and confidentially report the incident for inclusion in the [Annual Safety and Security report](#).

SCC's Counseling Assistance Program for Students (CAPS)

The College provides a confidential resource to students through the [Counseling and Assistance Program for Students](#) (CAPS) for victims of sexual offenses and also partners with various community resources to provide information and assistance to members of the campus community.^{5,6} The CAPS program offers free and confidential counseling for SCC students. The services include: Individual, couple & family counseling; mental health & substance abuse assessment; and support and therapy groups. For additional information about these services, see [CAPS Additional Information | Southeast Community College](#)

Under Title IX of the Education Amendments of 1972, [20 U.S.C.A §1681 et seq.](#), CAPS counselors are not required to report any information regarding an incident of alleged sexual violence to the Title IX coordinator or other appropriate school designee. The exemption from reporting obligations for pastoral and professional counselors under Title IX is consistent with the Clergy Act.

The CAPS counselors are encouraged to inform persons being counseled of SCC's procedures to report crimes on a voluntary basis for inclusion in the annual crime statistics.

⁵ For community and contact information, visit, [Are there Additional Resources? | Southeast Community College](#)

⁶ Employees may avail themselves of a confidential resource as well, the Employee Assistance Program (EAP), which provides free counseling sessions.

Reporting Sex Crimes, Sexual Misconduct and Civil Rights Violations

Any member of the community, guest or visitor who believes that the SCC policy on Equal Opportunity, Harassment and Nondiscrimination ([College Handbook A-14](#) and [A-15](#)) has been violated,⁷ is expected to report the incident. *(The list of individuals to whom incidents may be reported is provided in [Appendix C](#)).*

Reporting Hate Crimes

If the facts of a reported crime indicate that the offender was motivated to commit the offense because of their bias against the victim's race, sexual orientation, etc., then the assault is also classified as a [hate crime](#), and must be reported as such.

Voluntary Confidential Reporting

Crime victims are not required to pursue action within the College or the criminal justice system. However, victims may still want to consider making a report. With permission, SCC safety personnel can file a report on the details of the incident or offense without revealing the identity of the victim. Reports filed in this manner are counted and disclosed in the annual crime statistics for the institution.⁸

All reports are voluntary; however, no College employee can guarantee confidentiality or anonymity in every case.

If a person (complainant) reports a crime that involves an ongoing threat to safety, an alleged civil rights violation or a discriminatory act, and asks that their name or other identifiable information not be revealed, the College will evaluate the request in the context of its responsibility to provide a safe and nondiscriminatory environment for all students and employees. The College will inform the complainant if it cannot ensure confidentiality or anonymity. Furthermore, confidentiality cannot be guaranteed in incidents involving minors. SCC may be required to report incidents of sexual misconduct to state agencies and/or local law enforcement.

Off-Campus Jurisdiction

In addition to conduct that occurs on College property or in connection with official College functions, SCC's [Student Code of Conduct policy](#) gives the college the discretion to exercise jurisdiction over an SCC student's off-campus behavior.

⁷ Violations include acts of sexual harassment, sexual assault, sexual exploitation, bullying or intimidation, stalking, indecent exposure, domestic or dating violence.

⁸ See [Appendix C](#), Reporting Sex Crimes, Sexual Misconduct, Civil Rights Violations and Hate Crimes for designated reporters.

In determining whether to exercise off-campus jurisdiction, the College will consider:

- the seriousness of the alleged harm, (e.g., physical abuse, sexual harassment, stalking)
- the risk of harm involved, whether the complainant(s) are members of the campus community and/or
- whether the off-campus conduct is part of a series of actions which occurred both on and off campus.

Students or employees who are victims of crimes that occur at an off-campus location can contact any of the campus security personnel for assistance and referral to community resources.⁹

Non-Emergency Notification

To report any safety or security hazards and concerns of a non-emergency nature, students, faculty and staff may contact physical plant staff or security personnel. ([Appendix D.](#))

Emergency Notifications and Timely Warnings

SCC will request the cooperation of law enforcement in the event a [timely warning](#) is warranted. SCC continuously connects with numerous agencies to ensure the safety and security of its designated properties (See *Law Enforcement Contacts* section of [Appendix A](#)).

In the event of a significant emergency or dangerous situation involving the immediate threat to the health or safety of persons on Southeast Community College property or in the near vicinity of a campus or center, efforts are made to advise members of the campus community.

Situations in which an [emergency notification](#) or [timely warning](#) would be issued includes, but is not limited to: declaration of a Nebraska state emergency, and off-campus threat, severe weather, and electrical outage.

[Security Alerts](#) are situations where a series of crimes have occurred and other man-made incidents.

[Major Disruptions](#) are Situations that cause major disruption to campus operations.

These notices will be issued as a means of a "[Campus Timely Warning Notice](#)" or an "[Emergency Notification.](#)" The College will use a combination of methods to provide notice. (See [Appendix E](#) for methods used.)

SCC has established procedures, outlined in its Safety Management Plan (see [Emergency Response Procedures](#) details in [Appendix F](#)), to immediately notify the College community unless the notification will, in the professional judgment of responsible authorities, compromise

⁹ SCC does not have an agreement with local police to monitor and document criminal activity of student organizations at non-campus locations.

efforts to assist victims or to contain, respond to, or otherwise mitigate the emergency. Follow-up information will be posted periodically through the College Emergency Notification Systems as the situation changes or new information becomes available.

The employees (or designees) responsible for initiating the emergency notification process are listed in [Appendix D](#).

Emergency Response and Evacuation Procedures

The SCC Safety Management Plan ([Appendix F](#)) is a resource for SCC employees, including Area and Campus Safety Team members, and includes College emergency procedures for evacuation, shelter/severe weather, armed intruder, medical emergencies, etc.¹⁰

Campus Safety and Security Website

The College also maintains a Campus Safety and Security website (<https://www.southeast.edu/campussafety/>) which contains Campus Safety and Security Mission and Goals, information about emergency response procedures for the campus community to follow and links to pertinent safety and security resources.

Emergency procedures and [Standard Response Protocol](#) posters (see [Appendix F](#), Section D-2) that outline what to do in case of a variety of emergencies are found throughout all campus classrooms, Residential Halls, Library, and other open areas as well as at the safety and security website).

Safety Drills

Drills were held for both the Beatrice and Milford residence halls during the 2020 calendar year (see also the [Fire Statistics Report](#) section). Documentation of all testing includes a description of the exercise, the date, time and whether it was announced or unannounced.¹¹ SCC Campus Safety and Security Personnel also received training in incident command and responding to critical incidents on campus.

¹⁰ The plan does not cover every conceivable emergency, but supplies the basic administrative guidelines necessary to cope with most campus emergencies. All campus employees, especially those whose responsibilities and authority include the operational areas specified in the manual, must adhere to these guidelines.

¹¹ This information is maintained and retained by the appropriate Campus Safety and Security Coordinator/Specialist

Informing Students about Safety and Security Procedures

Students are informed of campus safety and security procedures through:

- New Student Orientation
- Annual Notification
- Public Website (<https://www.southeast.edu/campussafety/>)
- Evacuation Drills
- Campus Student Senate representation on Campus Safety Team
- Classroom announcements

Informing Employees about Safety and Security Procedures

Employees are informed of campus safety and security procedures through:

- New Employee Orientation
- Annual mandatory Safety Management Plan review and quiz
- Annual mandatory safety activities
- Annual Notification
- Public Website (<https://www.southeast.edu/campussafety/>)
- Representation on Campus Safety Team

SCC's Safety Management Plan ([Appendix F](#)) outlines the College's response to an emergency and sets the standards for the creation of individual campus emergency plans. All SCC employees are expected to be knowledgeable about the SCC Emergency Management Plans, and to provide supervision and guidance to students and visitors of the SCC campuses.

Employees are expected to be familiar with:

- The contents of the SCC Safety Management Plan.
- Basic emergency response procedures outlined in the Safety Management Plan.
- The location of emergency shelters on their home campus.
- The location of emergency exits, evacuation routes and locations of campus emergency gathering locations.
- The location and proper use of basic emergency tools (fire alarm pull stations, emergency exits and alternate emergency exits, fire extinguishers, AED units, and the number to their home campus Switchboard).
- How to protect themselves from injury while taking shelter or evacuating the building

Standard Response Protocol

A critical component of a safe campus is a uniform response to incidents, including, weather events, fires, accidents, intruders and other threats to student, employee and visitor safety. The [Standard Response Protocol \(SRP\)](#) is based on four (4) actions: [Lockout](#), [Lockdown](#), [Evacuate](#),

and [Shelter](#). In the event of an emergency, the action and appropriate direction will be part of the timely notification process.¹²

Active Shooter or Active Threat on Campus

If an [Active Shooter or Active Threat](#) exists on campus, the [Campus Emergency Notification System](#) will announce the presence of the danger on campus. Faculty and staff will direct all students to take shelter or evacuate the area, based on the location and imminence of the threat.

SCC's protocol for an active shooter is "Run, Hide, Fight" which is modeled on the video [Run, Hide, Fight](#). (See also [Appendix F](#))

Off-Campus Threat

An announcement will be made through the [Campus Emergency Notification System](#) alerting students and staff of the off-campus threat (*not posing an immediate threat*). Campus administrators will make every effort to "Lockdown" the campus, to prevent the threat from accessing the campus buildings.

Tornado, Severe Weather Warning

A [tornado warning](#) indicates a tornado is imminent and has been indicated by Doppler radar or reported by storm spotters. Tornado sirens will be activated anytime a tornado warning is issued for the area.

WARNINGS – Severe weather warnings are automatically initiated by the National Weather Service through Regroup. The Campus Director or Assistant Campus Director approves the release of a Weather Alert Notification.

When the threat of severe weather or tornado has ended, campus administrators will use the Campus Emergency Notification System that the "all clear" has been issued or that the tornado warning has expired or has been lifted. (See [Appendix D](#) for SCC staff who monitor radios and who they will notify in severe weather situations.)

Security and Access to Campus Facilities

The College serves approximately 83,682 credit and non-credit students¹³ and employs approximately 750 full-time staff and faculty on the three campuses and affiliated locations in addition to numerous part-time staff and adjunct instructors. Outside normal operating hours, access is provided by custodial/security personnel after validation of identification and a need to be on the premises.

¹² See the video at https://www.youtube.com/watch?v=GuwFco9_tvQ for a description of the SRP protocol.

¹³ SCC Fact Book <https://www.southeast.edu/institutional-research/factbook-enrollment/>

Admittance to Residence Hall

On the Beatrice and Milford campuses, students must be enrolled full-time in a program of study to be admitted to the residence halls. Part-time students may have access with the permission of the Dean of Students. Residence halls are keycard access only. Cameras and the ability to "lock down if needed" also protects the safety of the residents. For more information, see the [Residence Life Handbook](#).

Escort to Vehicle

For those who wish to be escorted to their vehicle or SCC residence hall during the evening hours (6-10 p.m.), SCC provides this courtesy service. (See [Appendix D](#) for information.)

Video Monitoring

SCC continues to install video monitoring at strategic locations at all College campuses and locations. Specific buildings have cameras focused on areas of higher risk. Designated college administrators or designees manage the recording, storage and potential sharing of all video monitoring conducted at SCC locations.

Facilities and Landscape Maintenance

Facilities and landscaping are maintained in a manner that minimizes hazardous conditions. Physical Plant as well as Safety and Security staff regularly patrol the campus and report potentially unsafe physical conditions to plant operations for correction. **Members of the College community may report any facility-related safety concerns.**

Chapter 2

SCC Policies, Procedures, Prevention Programs and Resources

Drug, Alcohol and Controlled Substance Policy

Southeast Community College prohibits the unlawful possession, use, manufacture, purchase, or distribution of alcohol or drugs, or any attempt thereof, by students or by employees on its property or as part of its activities. The College's full drug, [alcohol](#) and [controlled substance](#) policy is articulated in sections [E-2i\(1\)](#) and [E-2i\(2\)](#) of the College Policy handbook.

The College also provides information to students, prospective students and the public about its policies, prevention programs and disciplinary options at <https://www.southeast.edu/drug-alcohol-and-controlled-substance-policy/>.

Students, employees or visitors who violate federal or state laws about the possession, use or sale of drugs or alcohol are subject to criminal prosecution. The College refers violations of proscribed conduct to appropriate authorities for potential prosecution.¹⁴

Information regarding the federal penalties and sanctions may be found at <http://www.dea.gov/druginfo/ftp3.shtml>. Relevant Nebraska laws pertaining to drugs and alcohol may be found at <http://nebraskalegislature.gov/laws/browse-statutes.php>.

Disciplinary action will be specific to the situation, class, course, or program. All sanctions and actions will be documented. The College will attempt to handle each situation at the lowest level of intervention possible.

Student Educational and Disciplinary Sanctions

Information regarding student educational and disciplinary sanctions for alcohol and drug violations is included in the [SCC Student Code of Conduct Handbook, and in SCC's Drug-Free Schools and Communities Act brochure](#). Students accused of violating the drug/alcohol policy shall have the right to respond through the appeals process outlined in the Student Code of Conduct.¹⁵

¹⁴ The SCC Student Code of Conduct includes an amnesty policy which states the following: "...any College student who brings their own use, addiction, or dependency to the attention of College officials independent of the threat of drug tests or conduct sanctions and seeks assistance; a conduct complaint will not be pursued. A written action plan may be used to track cooperation with the assistance plan by the student. Failure to follow the action plan may nullify the amnesty protection and campus conduct processes may be initiated."

¹⁵ The Campus Dean of Students will investigate suspected or alleged violations of College policies regarding prohibited use of alcohol and drugs by students. Sanctions may include disciplinary action against a student, up to and including expulsion and referral for criminal prosecution

Employee Disciplinary Sanctions

For employees, the disciplinary sanctions for alcohol and drug violations are found in section [E2i\(1\)](#) of the College Policy Handbook. Other actions that may be taken are outlined at <https://www.southeast.edu/drug-alcohol-and-controlled-substance-policy/>.¹⁶

SCC Alcohol and Drug Prevention Programing

To inform students on safe choices and improving wellness, SCC has implemented the evidence-based program, Year One College Behavior program (Y1CBP) as part of its alcohol and drug prevention programing for its campus communities. The College's prevention programs and educational efforts are discussed at <https://www.southeast.edu/preventionprogramseducation/>.

With the addition of Y1CBP assessment tool, SCC has a better idea of overall alcohol consumption on the campuses. As of fall 2020, all new students were given the opportunity to complete the assessment as an official assignment to New Student Orientation. To date, 587 students have completed the assessment in its entirety. Due to the COVID-19 emergency, the assessment was offered online.

Data from the Y1CBP indicates:

- More than half of SCC's entering students reported being abstainers.
- Binge drinking among SCC students is a bit lower than Nebraska high school seniors
- Students reported moderately responsible levels of drinks per occasion, per week, and per month
- Some entering students reported negative outcomes associated with drinking, particularly those who binge drink
- Although problems are correlated with high consumption and binge drinking, problems are not entirely a result of high levels of drinking
- Some entering students expressed they and their peers may have misperceptions regarding levels of drinking and the use of marijuana. These students were especially likely to misperceive injunctive norms about support for drinking and driving and the use of marijuana derivatives and edibles.

The data suggests:

- A need to provide programming and counseling for students having problems and not relying on interventions designed to reduce consumption as these may not be enough

¹⁶ The Human Resources Office will investigate suspected/alleged violations of College policies regarding prohibited use of alcohol and drugs by employees. Sanctions may include disciplinary action against an employee, up to and including termination and referral for criminal prosecution.

- Social norms marketing to entering students may be a desirable strategy and that social norms messages in the Y1CBP are an important feedback tool for addressing misperceptions.

Alcohol and Drug Education Assistance and Resources

The SCC Counseling Assistance Program (CAPS) provides students with access to counseling and referrals free of charge through a partnership with masters-level counseling students from area universities.¹⁷ Additional information is available at each campus' Student Engagement Office. The College provides information about area alcohol and drug assistance resources at <https://www.southeast.edu/AlcoholDrugEducationAssistanceResources/>

2019-2020 Infractions

The following infractions and subsequent fines/sanctions were reported:

Campus	Alcohol	Drug	Total
Fine/Sanction- Beatrice	32	4	36
Fine/Sanction -Milford	18	2	20
TOTAL Infractions			56

Prevention Programs and Resources

SCC has developed programs and resources ([Appendix G](#)) to prevent the illicit use of drugs and the abuse of alcohol by students and employees. These programs include dissemination of materials, educational programs, counseling services, referrals and College disciplinary actions. Additionally, at the completion of the 2018-2020 Biennial Review process, the following program information was provided by Student Life and Residence Life.

¹⁷ While counseling is not a required sanction, students who are exhibiting problematic behavior related to drug and alcohol use are referred to not only community resources but on-campus mental health services as well.

SCC ANNUAL SAFETY, SECURITY AND CRIME/FIRE STATISTICS

Activity	Campus	NIAAA¹⁸ College Aim Rating			Reach	Notes
		Effectiveness	Cost	Barriers		
Off Campus Party Publication Fall 2019	Milford, Beatrice, Lincoln	***	\$\$	##	UNK	Information regarding public property and alcohol consumption, alcohol procurement, and open container.
Y1CBP/CBP Alcohol Sanction tool 3rd Millennium	Milford Campus Beatrice Campus	*** **	\$\$ \$\$	####	12 35	Students who violate the student code of conduct by possessing alcohol on campus are required to complete an educational program.
Athletic Team Meetings (Drug/Alcohol Education and policy review) – ENV-1 IND-2	Beatrice	?	\$\$\$	## ##		Consists of review of SCC Athletic Handbook, SCC Conduct Expectations, drug testing guidelines and team rules/expectations – Y1CAP and Y1CBP provided in CANVAS for the 2020 term
Awareness print messaging – IND – 1 Athletic Team Meetings (Drug/Alcohol Education and policy review) – ENV-5	Beatrice	X	\$\$\$	###	UNK offered in NSO Canvas shell	Ongoing message evidence-based messaging, “Off-Campus Party? Consider this...”; “Make the Call – No MIP Fall” of each academic year – consists of review of SCC Athletic Handbook, SCC

¹⁸ National Institute on Alcohol Abuse and Alcoholism

SCC ANNUAL SAFETY, SECURITY AND CRIME/FIRE STATISTICS

Activity	Campus	NIAAA ¹⁸ College Aim Rating			Reach	Notes
		Effectiveness	Cost	Barriers		
						Amnesty/drug testing guidelines and team rules/expectations.
Residential Life Meetings (Drug/Alcohol Education and policy review) – ENV-1 Awareness spring messaging – IND-1	Beatrice and Milford College-wide	X X	\$ \$\$	## #	500 Students estimated	Expectations for students and educational items offered during the fall and spring terms. SCC Conduct info, harm reduction
RA Training with Beatrice Police Department – IND-1 & ENV-6	Beatrice	X ?	\$ \$	## #	15	Fall 2019/SPRING training for RA's providing information about room searches and signs of alcohol and drug impairment
Beatrice Police Department Drug Dog meet & greet – IND-1 RA Training with Beatrice Police Department – IND-1	Beatrice	X X	\$ \$ \$	# ##	15	2020 Training for RA's that provides information about room searches and signs of alcohol and/or drug impairment.
Sober in October" Alcohol Awareness Free Mock-tails and Alcohol Awareness – ENV-4	Beatrice & Milford	*	\$	###	COVID UNK	Standard Drink presentation and social media posting

SCC ANNUAL SAFETY, SECURITY AND CRIME/FIRE STATISTICS

Activity	Campus	NIAAA ¹⁸ College Aim Rating			Reach	Notes
		Effectiveness	Cost	Barriers		
Alcohol Awareness event Spring Break Alcohol Awareness "Arrive Alive" Tour ENV-6 & IND-5	Lincoln	X	\$\$\$	#	UNK COVID	Spring 2020 Awareness (information about health risk, binge drinking, BAC charts provided) with incentive informational tables and activities. Y1CBP Designed to educate students on how to have a safe spring break provided.
Sexual Assault/Alcohol Awareness Safety Presentation partnered with Hope Crisis Center ENV-6	Milford	?	\$	#	50 Students FALL 2020	FALL 2020; Provided alcohol safety and awareness information as it relates to consent and dating relationships.
New Student Orientation Drug-Free Schools and Community Act and Student Code of Conduct expectation – ENV-1	All Campuses	????	\$\$\$\$	####	2400 FALL 2020 Students who completed NSO	Policies, conduct expectations and sanctions related to violations.
Title IX/Bystander Intervention- ENV-6 New Student Orientation Drug-Free Schools and Community Act and Student Code of Conduct Expectation – ENV-1 & ENV-6	All Campuses	X	\$	###	UNK	Informational table top activities designed to educate students regarding bystander intervention theories.

SCC ANNUAL SAFETY, SECURITY AND CRIME/FIRE STATISTICS

Activity	Campus	NIAAA ¹⁸ College Aim Rating			Reach	Notes
		Effectiveness	Cost	Barriers		
Standard Drink Demonstration with Public Health Four Corners IND-6	Milford	XX	\$	##	UNK	Informational table in which students are quizzed and encouraged to pour a standard drink of alcohol. Standard drink fliers provided.
RA Training: Drug Recognition IND-1 Sexual Assault/Alcohol Awareness Safety Presentation – ENV-6 & IND-6	Beatrice & Milford	XX	\$ \$	## ##	10-30	Training for RAs that provides information about room searches and signs of alcohol and/or drug impairment. Weekly event to provide bystander intervention Alcohol awareness (information about health risks, binge drinking, BAC charts provided)
Addition of Amnesty Policy to SCC Student Code of Conduct – ENV-5 RA Training: Drug Recognition IND-1	Beatrice & Milford	*	\$ \$	# # #	10-30	2020 training for RAs that provides information about room searches and signs of alcohol and/or drug impairment.
Virtual Bar (COVID) social Media Platforms – How does Alcohol impact you? ENV-1	Beatrice, Milford, Lincoln Social Media Platforms	?	\$	# # #	UNK	Utilized social media for April Alcohol Awareness Month; impacts alcohol has on men vs. women.
Standard Drink (COVID) Graphic Social Media Platforms with facts and stats from the NIAA site. ENV-1	Beatrice, Milford, Lincoln Social Media Platforms	?	\$	# # #	UNK	Utilized social media for April Alcohol Awareness Month; COVID Shutdown

SCC ANNUAL SAFETY, SECURITY AND CRIME/FIRE STATISTICS

Activity	Campus	NIAAA ¹⁸ College Aim Rating			Reach	Notes
		Effectiveness	Cost	Barriers		
Addition of Amnesty Policy to SCC Student Code of Conduct – ENV-5	College-wide	?	\$	#	All Students	Additional information provided in the Fall 2020 NSO
Addition of Amnesty Policy to SCC Student Code of Conduct – ENV-5	College-wide	?	\$	#	All Students	Additional information below.
Alcohol Overuse and Impacts: Ways to Aid Students CAPS Program Presentation	Milford Campus	***	\$	##	UNK Students/staff	Information provided by a mental health professional indicating impacts alcohol has on Mental Health
Y1CBP – Year One College Behavioral Profile IND-2 & ENV-6	All Campuses	***	\$\$	##	587 students	A web-based brief intervention program designed to target first year students' misperceptions of alcohol and cannabis use. Evidence-based practice used to identify, reduce, and prevent problematic use, abuse, and dependence on alcohol and illicit drugs.

NIAAA Legend: Effectiveness: ***=Higher; **=Moderate; *=Lower; X=Not Effective;?=Too few studies to rate Cost: \$\$\$=Higher; \$\$=Moderate-range; \$=Lower. Barriers: ###=Higher; ##=Moderate; #=Lower

Continuous Program Improvement

In addition to implementing the Year One College Behavioral Profile (Y1CBP) in fall 2019, SCC began transitioning the prevention planning efforts to the Director of Student Engagement and Enrichment, effective spring of 2020. With this transition, prevention efforts are consistent across all campuses.

Sexual Harassment/Violence Education Activities

The College provides information and activities throughout the academic year to educate students about healthy vs unhealthy relationships and consent. SCC's New Student Orientation contains a video about bystander intervention practices as well as Title IX information specifically related to sexual harassment and sexual misconduct

Title IX, Campus SaVE Act

[Title IX of the Education Amendments of 1972](#) applies to SCC. Under Title IX, individuals are protected from discrimination based on sex in any educational program or activity operated by recipients of federal financial assistance. Title IX applies equally to students, college employees, and nonemployee third parties.

SCC does not condone gender-based misconduct. When an allegation of misconduct is brought to an appropriate administrator's attention, and a respondent is found to have violated the College policy prohibiting discriminatory harassment, ([Policy E-3f\(1\)](#)), serious sanctions will be used to reasonably ensure that such actions are not repeated.

For definitions and discussion of what constitutes sexual misconduct and definitions from the Revised Statutes of Nebraska, see, "What You Should Know About Consent and Other Forms of Sexual Misconduct," at the SCC Title IX website [Title IX Resources | Southeast Community College](#) or see "[A Quick Guide to Title IX](#)" for College policy and community resources.

Reporting an Incident of Sexual Misconduct

The reporting of sexual misconduct encompasses incidents that occur both on and off campus when it involves a Southeast Community College student and when the conduct negatively affects the victim's school experience or overall school environment. Any behavior, which results in the sexual abuse/assault of another person, will not be tolerated and is a violation of the College's Code of Conduct.

Rights and Options

If a student or employee reports to SCC they have been a victim of dating violence, domestic violence, sexual assault or stalking, either on or off campus, SCC will provide them with a written explanation of their [rights and options](#).

All reports will be taken seriously. If an incident is reported, SCC Safety Personnel, can assist in filing a criminal complaint and in obtaining and enforcing a court order of protection. Individuals unsure about filing a complaint, can also be assisted. Safety Personnel can take to actions on the individual's behalf, including accommodations, such as assistance in changes to academic, living, transportation and working situations, and protective measures, such as no-contact orders.

Options for Reporting

Southeast Community College strongly encourages any person subjected to sexual misconduct to report the conduct to law enforcement and to the College's Title IX office. Reporting options are discussed in more detail in SCC's publication, [Southeast Community College Sexual & Relationship Violence Rights & Reporting Options](#). There are several reporting options available.

Anonymous Reporting

A report may be filed anonymously. Reporting anonymously may limit the College's ability to conduct a full investigation and act. Anonymous reporting may be done through the College's Incident Reporting System [TIPS](#).¹⁹

SCC's Incident Reporting System - TIPS

[TIPS](#) provides an online method by which SCC leadership may share campus concerns. Concerns expressed through [TIPS](#) which contain potential sexual misconduct allegations will be investigated by the Title IX Coordinator and/or designee.

TIPS should not be used to report an immediate threat to life or property.

Contact a Responsible Employee

[Responsible employees](#)²⁰ are individuals working at SCC who have an obligation to inform the Title IX Coordinator of allegations of sex discrimination or sexual misconduct.

Responsible Employees cannot keep concerns confidential. Concerns will be reported, and the College will follow up.

The College can only act on those activities that it is aware of; for the College to act, incidents, (including complaints against third parties who are not students or employees of the College), must be reported to a Responsible Employee, Campus Safety and Security Specialist, Campus Security Authority, or the Title IX Coordinator. These individuals can assist with the reporting process, getting help, explaining the rights an individual has as a student/employee, and explaining the investigation processes and protection options available. Each campus has identified individuals who can assist (See [Appendix C](#)).

¹⁹ The TIPS link may be found on The Hub at the Safety and Security page and the college's website: <https://www.southeast.edu/campussafety/>.

²⁰ Faculty, staff, and student employees (including RAs) are considered mandatory reporters (Responsible Employees).

Other Reporting Options

Alternative reporting options include:

- Initiating institutional actions but not pursuing formal criminal action through a local law enforcement agency.
- Declining to pursue any institutional action, but pursue criminal action or make a report to law enforcement.
- File a Title IX Complaint with the Office of Civil Rights.²¹

Retaliation

Retaliation against a grievant or witness for filing or participating in an investigation is prohibited. The college will follow up on any reports of retaliation and take appropriate action.

Complaint and Investigation Procedures of Sexual Misconduct

SCC follows the College's Student Code of Conduct process, in investigating all allegations of sexual misconduct with one exception. *Committee members who conduct sexual misconduct hearings have participated annually in training covering Title IX issues related to dating and domestic violence; sexual assault, and stalking; and the processes for conducting investigations and hearings.*

Sexual Assault Education and Prevention

The College has awareness and prevention programs designed to provide education about sex offenses, prevention of sexual assault and personal safety issues available to students and employees.²²

Students are informed about SCC's policies and prevention and awareness programming through:

- New Student Orientation
- On-Campus Activities posted on electronic signs, fliers on campus, the HUB and web notices
- Student Senate reports
- Annual Notification

Employees are made aware of SCC's policies, prevention and awareness programming through:

²¹ The Office for Civil Rights (OCR) of the U.S. Department of Education enforces Title IX. <http://www2.ed.gov/about/offices/list/ocr/complaintprocess.html>.

²² The College assesses and updates its alcohol and other drug and sexual misconduct awareness and prevention training programming to ensure the programs uses current and relevant evidence-based practices.

- New Employee Orientation
- Professional development and educational opportunities, both on-campus and electronically through webinars and online training programs
- Annual notification

Employees are expected to complete annually, an online training program from a third-party vendor. The program covers issues of discrimination, harassment, and issue of sexual harassment in higher education.

Sex Offender Registry

The Nebraska Sex Offender Registration Act ([Neb. Rev. Statute 29-4001-29-4115](#)) requires sex offenders to register with local law enforcement officials. Registry information is available to the public on the Nebraska State Patrol's website: <https://sor.nebraska.gov/>. [SCC Policy E-2j](#): places [certain restrictions](#) on registered sex offenders and requires they report to the Dean of Students Office each term they are enrolled in classes.

Other SCC Policies and Programs Affecting Safety

Residence Life

The college provides housing for approximately 550 students in six total residence halls on the Beatrice and Milford Campuses. Information about living on campus at SCC is available at <https://www.southeast.edu/livingoncampus/> Detailed information is available in the [Housing Handbook](#).

Residence Hall Staff

At each SCC campus that offers on campus living, there is a Residence Life Manager that is responsible for the operation of the residence halls. All Residence Life Managers, Assistant Residence Life Managers and Resident Assistants live on campus and oversee all aspects of residence life.

Residence Hall Security and Guests

Safety and security in the residence halls is established to ensure a safe environment for all.²³ All doors are locked 24 hours a day. Residents are issued keycards/FOBs that allow entry. Emergency exit doors are alarmed and may only be opened from the inside without a key.

²³ The Safety and Security Office also has trainings available to ensure a safe environment for students and employees.

Residents are permitted overnight guests (of the same gender), but permission of all roommates is required. Overnight guests are limited to no more than two nights per term. The behavior of the guest is the responsibility of the host student.

Unacceptable Behavior

Aggressive and/or Disruptive Behavior

Aggressive and disruptive behavior is not permitted within the residence halls. Residents participating in aggressive and/or disruptive behavior, are in violation of Housing and College policies and could face possible termination of the housing contract and other disciplinary sanctions.²⁴

Verbal abuse or harassment of any kind, of staff or other members of the SCC community, is not tolerated. Violence e.g., fighting, hazing, harassment, bullying or intimidation is also not tolerated. Residents also are expected to desist from any behavior that directly or indirectly endangers themselves or others in housing.

Harassment or Discrimination

The College will not tolerate [harassment](#) or [retaliation](#) in the workplace ([Policy E-3f\(1\)](#), College Handbook), or educational environment whether committed by faculty, staff, or students, or by visitors to the College while they are on College property or at events conducted, sponsored or sanctioned by the College. Each member of the College community is responsible for fostering civility, for being familiar with this policy, and for refraining from conduct that violates this policy.²⁵

Alcohol and Controlled Substances Information

The following situations are all violations of Southeast Community College Student Code of Conduct and Residence Life Handbook, and will result in an Alcohol Violation:

- Resident is in possession of alcohol (alcohol found in resident's room, refrigerator, desk, closet, backpack, vehicle, etc.)
- Resident is under the influence of alcohol on campus (stumbling, yelling, vomiting, passed out in commons areas, slurring speech, smells of alcohol, etc.)
- Resident is in room where alcohol/and or alcohol containers are present

²⁴ Examples of violations that can lead to contract revocation include, but are not limited to, bomb threats, the activation of false fire alarms, tampering with emergency equipment, or infliction/threat of bodily harm.

²⁵ Prohibited discriminatory harassment is defined as conduct that is sufficiently severe, pervasive, and objectively offensive as to substantially disrupt or undermine a person's ability to participate in or to receive the benefits, services, or opportunities of the College, and/or has the effect of creating an intimidating, hostile, or offensive environment.

- Resident is in possession of empty alcoholic beverage containers (liquor bottles, beer cans, etc.)
- Resident is in possession of other containers with alcohol residue inside (drinking glass, bottle of pop, flask, shot glasses, etc.)
- Resident is in possession of drink mixes intended to make alcoholic beverages (daiquiri mixes, long island ice tea mixes, etc.)

If alcohol or alcohol containers are present in a room, all the residents and SCC students found in the room are responsible for the policy violation including fines, sanctions and housing probation ([Residence Life Handbook](#)). Alcohol will be disposed of by Residence Life and/or Safety and Security Staff. Incidents will be documented, and the student will be subject to disciplinary action. Eviction can result from such incidents, even if it is a first offense.

Controlled Substances

It is a violation of the Southeast Community College [Student Code of Conduct](#), local, state, and federal law, to possess or use [controlled substances](#) on any part of campus, including inside residence halls or a resident's car. It is also a violation to be in the room when illegal drugs/[controlled substances](#) are present or being used. Residents under the influence will be subject to disciplinary action, fines, sanctions, probation, and/or eviction.

Law enforcement will be contacted if:

- Alcohol is found.
- A resident is suspected to be in possession of a controlled substance.

Law enforcement may arrange for transportation to a detoxification facility. Should Residence Life and/or Safety and Security Staff have concern that a student or residents are at risk medically because of an excessive ingestion of alcohol, or a [controlled substance](#), 911 will be called. These procedures also apply to guests of residents.

All students who violate Southeast Community College [Conduct Expectations](#) alcohol and drug use guidelines must complete both 10 hours of community service and the College Behavior Profile controlled substances survey and discuss it with a designated administrative person on their home campus. This is considered a sanction and must be completed as a condition of disciplinary probation.

Safety and Security 24/7 Dorm Lockdown

The residence halls will be locked 24 hours a day, 7 days a week. Residents must always carry their ID key cards with them as the card is needed to gain access to the residence halls.

It is a policy violation to allow another individual to use a resident's assigned keys. If an apartment/room key is lost, the loss must be reported as soon as possible to the Residence Life

Office. The resident will be charged to have the lock changed and new keys will be issued to the resident and their roommates.²⁶

Missing Student Notification

The Missing Student Notification Procedures are established pursuant to Missing Student Notification Policy and Procedures as described in the Higher Education Opportunity Act of 2008²⁷ and apply only to SCC students who reside in on-campus housing at the Beatrice and Milford campuses. SCC's policy, procures and process are described in the annual [Residence Life Handbook](#).

Weapons Policy

[SCC Policy A-21](#) prohibits the possession, concealment or use of firearms, weapons, fireworks and explosive materials, or other dangerous instruments, in College-owned buildings, grounds, or vehicles, or at any location where a meeting, activity or athletics event is conducted, sponsored or sanctioned by the College.

Effective Jan. 1, 2007, [Nebraska Revised Statute 69-2441\(1\)\(a\)](#) makes it unlawful to carry a concealed handgun into a meeting of the governing body of a political subdivision, or collegiate athletic event; school, school grounds, school-owned vehicle, or school-sponsored activity or athletic event.

These prohibitions apply to EVERYONE (employees, students, invitees, and visitors) and are enforceable EVERYWHERE (all College property and all College-related events.) Violations of these prohibitions will result in disciplinary and/or law enforcement action. Law enforcement officers on official business are exempt.

²⁶ It is a misdemeanor to reproduce Southeast Community College keys. Unauthorized use of keys may lead to disciplinary and/or legal sanctions.

²⁷ See, [20 USC 1092, "Missing Persons"](#)

Chapter 3

Crime Reporting and Annual Statistics

Crime statistics provided in compliance with the Jeanne Clery Disclosure of Campus Security Policy and Campus Crime Statistics Act ([\(20 U.S.C., §1092\)](#)) are compiled and released annually by the Southeast Community College Safety and Security Office. The chart totals at the end of this Annual Security Report represent the compilation of all designated Clery Act crimes reported to campus officials and [CSAs](#). Included in this report are statistics and data received from law enforcement agencies within SCC's Clery Geography outside of the main campus.

[CSAs](#) of SCC are sent an email advisory each fall detailing the requirement that they provide to the SCC Safety and Security Office any information brought to their attention regarding any Clery Act reportable crime.²⁸

The SCC Safety and Security Office completes an annual process of property identification, determination of law enforcement jurisdiction, request for Clery Act crime statistics, and follow-up contact to ensure a reasonable, [good-faith](#) effort is completed in the collection of required statistics. This same process is also conducted with the local law enforcement agency that has jurisdictional control over public areas adjoining SCC campuses.

²⁸ This information may be brought to the attention of the CSA by a victim, witness, other third party or the offender. If the CSA believes the information was provided in [good faith](#), the CSA must report the information to campus safety administrators.

SCC Geography and Crime Statistics for 2018, 2019, 2020

The remainder of this Annual Security Report contains descriptions and reportable crime and fire statistics for SCC's reportable campuses geographies.

Beatrice Campus

Beatrice Geography and Crime Statistics

SCC's campus in Beatrice, a community of approximately 12,500, is located at 4771 West Scott Road, Beatrice NE. Beatrice is the county seat of Gage County and is approximately 45 miles south of Lincoln on U.S. Highway 77. The main part of campus is comprised of several classroom and office buildings, as well as four housing units, and a gymnasium. Approximately 800 students take classes on the Beatrice Campus. One mile south of the main campus is the SCC Agricultural Center and Farm which is located on approximately 900 acres. Students receive hands-on agricultural experience at the Agricultural Center and Farm.

The Security services are provided by the SCC Safety and Security Office. Law enforcement is provided by the Beatrice Police Department. The law enforcement for the Farm and surrounding one-mile section is provided by the Gage County Sheriff.

Emergency fire and medical service at the Beatrice campus is handled by the Beatrice Fire and Rescue Department. Fire and emergency medical service at the Farm and the surrounding one-mile section is provided by Beatrice Rural Fire and Beatrice Fire and Rescue.

Crime statistics compiled for the Beatrice campus are all crimes reported to the Campus Security Authorities and the Beatrice Police Department. The crime statistics compiled are those that are reported to have occurred within the campus boundary.

SCC BEATRICE CAMPUS ANNUAL SECURITY REPORT 2018, 2019, 2020

The period January 1 to December 31

Total Crimes Reported For: Offense Type: <i>(includes attempts)</i>	On-Campus Buildings and Properties						Non-Campus Building or Property <i>(Total)</i>			Public Property <i>(Total)</i>			Unfounded <i>(Total)</i>		
	On-Campus Student Housing			On-Campus Total*			2018	2019	2020	2018	2019	2020	2018	2019	2020
	2018	2019	2020	2018	2019	2020	2018	2019	2020	2018	2019	2020	2018	2019	2020
Murder/Non-negligent manslaughter	0	0	0	0	0	0	0	0	0	0	0	0	0	0	0
Negligent Manslaughter	0	0	0	0	0	0	0	0	0	0	0	0	0	0	0
Rape	0	0	0	0	0	0	0	0	0	0	0	0	0	0	0
Forcible Fondling	0	0	0	0	0	0	0	0	0	0	0	0	0	0	0
Statutory Rape	0	0	0	0	0	0	0	0	0	0	0	0	0	0	0
Incest	0	0	0	0	0	0	0	0	0	0	0	0	0	0	0
Aggravated Assault	0	0	0	0	0	0	0	0	0	0	0	0	0	0	0
Robbery	0	0	0	0	0	0	0	0	0	0	0	0	0	0	0
Burglary	1	0	0	1	0	0	0	0	0	0	0	0	0	0	0
Motor Vehicle Theft	0	0	0	0	0	0	0	0	0	0	0	0	0	0	0
Arson	0	0	0	0	0	0	0	0	0	0	0	0	0	0	0
Domestic Violence	1	0	0	1	0	0	0	0	0	0	0	0	0	0	0
Dating Violence	0	0	0	0	0	0	0	0	0	0	0	0	0	0	0
Stalking	0	0	0	0	0	0	0	0	0	0	0	0	0	0	0
Hate Crimes: (by prejudices)	0	0	0	0	0	0	0	0	0	0	0	0	0	0	0
Race	0	0	0	0	0	0	0	0	0	0	0	0	0	0	0
Gender	0	0	0	0	0	0	0	0	0	0	0	0	0	0	0
Gender Identity	0	0	0	0	0	0	0	0	0	0	0	0	0	0	0
Religion	0	0	0	0	0	0	0	0	0	0	0	0	0	0	0
Sex Orientation	0	0	0	0	0	0	0	0	0	0	0	0	0	0	0
Ethnicity	0	0	0	0	0	0	0	0	0	0	0	0	0	0	0
National Origin	0	0	0	0	0	0	0	0	0	0	0	0	0	0	0
Disability	0	0	0	0	0	0	0	0	0	0	0	0	0	0	0
Liquor Law Violations	24	23	35	24	23	35	0	0	0	0	0	0	0	0	0
Arrest	0	1	0	0	1	0	0	0	0	0	0	0	0	0	0
Disciplinary Referrals	24	22	35	24	22	35	0	0	0	0	0	0	0	0	0
Drug Law Violations	12	7	3	12	7	3	0	0	0	0	0	0	0	0	0
Arrest	0	1	0	0	1	0	0	0	0	0	0	0	0	0	0
Disciplinary Referrals	12	6	3	12	6	3	0	0	0	0	0	0	0	0	0
Weapons Law Violations	0	0	3	0	0	3	0	0	0	0	0	0	0	0	0
Arrest	0	0	2	0	0	2	0	0	0	0	0	0	0	0	0
Disciplinary Referrals	0	0	1	0	0	1	0	0	0	0	0	0	0	0	0
*Includes On-Campus Student Housing															

Lincoln Campus

Lincoln 8800 O Street Campus Geography and Crime Statistics

SCC's Lincoln main Campus is the College's largest enrollment center with approximately 9,000 students. Located on the east edge of Lincoln at 8800 O Street, the Lincoln Main Campus is comprised of one large building divided into sections per academic discipline, a cafeteria, child development center, and gymnasium. Physically connected to the main campus building is The Career Academy, a partnership with Lincoln Public Schools for a dual-credit academy for juniors and seniors in high school. There also is a concourse for the Professional Truck Driver Training program. It is a commuter campus with no residence halls.

Security services are provided by the SCC Safety and Security Office and an MOU is in place with the Lancaster County Sheriff's Office. Emergency and non-emergency requests for police services are also provided by the Lincoln Police Department. Emergency fire and medical service at the Lincoln campus is handled by the Lincoln Fire and Rescue Department and the Lancaster County Sheriff.

Crime statistics compiled for the Lincoln 8800 O Street campus are all crimes reported to the Campus Security Authorities and the Lincoln Police Department. The crime statistics compiled are those that are reported to have occurred within the campus boundary. There are no crime statistics for on-campus housing because the Lincoln main campus does not have any on-campus housing.

SCC LINCOLN MAIN CAMPUS ANNUAL SECURITY REPORT 2018, 2019, 2020

The period January 1 to December 31

Total Crimes Reported For:	On-Campus Buildings and Properties						Non-Campus Building or Property (Total)			Public Property (Total)			Unfounded (Total)		
	On-Campus Student Housing*			On-Campus Total			2018	2019	2020	2018	2019	2020	2018	2019	2020
Offense Type: (includes attempts)	2018	2019	2020	2018	2019	2020									
Murder/Non-negligent manslaughter	NA	NA	NA	0	0	0	0	0	0	0	0	0	0	0	0
Negligent Manslaughter	NA	NA	NA	0	0	0	0	0	0	0	0	0	0	0	0
Rape	NA	NA	NA	0	0	0	0	0	0	0	0	0	0	0	0
Forcible Fondling	NA	NA	NA	0	1	0	0	0	0	0	0	0	0	0	0
Statutory Rape	NA	NA	NA	0	0	0	0	0	0	0	0	0	0	0	0
Incest	NA	NA	NA	0	0	0	0	0	0	0	0	0	0	0	0
Aggravated Assault	NA	NA	NA	0	0	0	0	0	0	0	0	0	0	0	0
Robbery	NA	NA	NA	0	0	0	0	0	0	0	0	0	0	0	0
Burglary	NA	NA	NA	0	0	0	0	0	0	0	0	0	0	0	0
Motor Vehicle Theft	NA	NA	NA	0	0	0	0	0	0	0	0	0	0	0	0
Arson	NA	NA	NA	0	0	0	0	0	0	0	0	0	0	0	0
Domestic Violence	NA	NA	NA	0	0	0	0	0	0	0	0	0	0	0	0
Dating Violence	NA	NA	NA	0	0	0	0	0	0	0	0	0	0	0	0
Stalking	NA	NA	NA	2	0	0	0	0	0	0	0	0	0	0	0
Hate Crimes: (by prejudices)	NA	NA	NA	0	0	0	0	0	0	0	0	0	0	0	0
Race	NA	NA	NA	0	0	0	0	0	0	0	0	0	0	0	0
Gender	NA	NA	NA	0	0	0	0	0	0	0	0	0	0	0	0
Gender Identity	NA	NA	NA	0	0	0	0	0	0	0	0	0	0	0	0
Religion	NA	NA	NA	0	0	0	0	0	0	0	0	0	0	0	0
Sex Orientation	NA	NA	NA	0	0	0	0	0	0	0	0	0	0	0	0
Ethnicity	NA	NA	NA	0	0	0	0	0	0	0	0	0	0	0	0
National Origin	NA	NA	NA	0	0	0	0	0	0	0	0	0	0	0	0
Disability	NA	NA	NA	0	0	0	0	0	0	0	0	0	0	0	0
Liquor Law Violations	NA	NA	NA	0	0	0	0	0	0	0	0	0	0	0	0
Arrest	NA	NA	NA	0	0	0	0	0	0	0	0	0	0	0	0
Disciplinary Referrals	NA	NA	NA	0	0	0	0	0	0	0	0	0	0	0	0
Drug Law Violations	NA	NA	NA	0	0	0	0	0	0	0	0	0	0	0	0
Arrest	NA	NA	NA	0	0	0	0	0	0	0	0	0	0	0	0
Disciplinary Referrals	NA	NA	NA	0	0	0	0	0	0	0	0	0	0	0	0
Weapons Law Violations	NA	NA	NA	1	0	0	0	0	0	0	0	0	0	0	0
Arrest	NA	NA	NA	0	0	0	0	0	0	0	0	0	0	0	0
Disciplinary Referrals	NA	NA	NA	1	0	0	0	0	0	0	0	0	0	0	0

Jack J. Huck Continuing Education and Entrepreneurship Center (CEC/ENT)

CEC/ENT Geography and Crime Statistics

The Continuing Education/Entrepreneurship Center of Southeast Community College consists of two physically connected buildings located at 301 and 285 S 68th ST Place, Lincoln NE and offers various classrooms and a 75-seat auditorium, perfect for customized training for business and industry. Besides non-credit continuing education courses, the Center has classrooms for the Food Service/Hospitality program and Continuing Education health-related programs such as Emergency Medical Services, CPR and First Aid, and Nursing Assistant and Medication Aide.

The College's Area Office, which includes administrative offices for the president, several vice presidents and public information, is located on the fifth floor of the building. SCC's Entrepreneurship Center serves as a resource center for anyone interested in Entrepreneurship. Offered at the center is assistance for anyone interested in starting a business or looking for direction on their path to business independence. The third floor of the center is dedicated to Business Incubation. The center also hosts credit and non-credit classes on Entrepreneurship. It is an off-campus location with no residence halls.

Security services are provided by the SCC Safety and Security Office and an MOU is in place with the Lancaster County Sheriff's Office. Emergency and non-emergency requests for police services are also provided by the Lincoln Police Department. Emergency fire and medical service at the Jack J. Huck Continuing Education and Entrepreneurship Center is handled by the Lincoln Fire and Rescue Department and the Lancaster County Sheriff.

Crime statistics compiled for the CEC/ENT building are all crimes reported to the Campus Security Authorities and the Lincoln Police Department. The crime statistics compiled are those that are reported to have occurred within the campus boundary. The CEC/ENT building does not have any on-campus housing.

SCC JACK J. HUCK CONTINUING EDUCATION and ENTREPRENEURSHIP CENTER ANNUAL SECURITY REPORT 2018, 2019, 2020

The period January 1 to December 31

Total Crimes Reported For:	On-Campus Buildings and Properties**						Non-Campus Building or Property (Total)	Public Property (Total)			Unfounded (Total)				
	On-Campus Student Housing*			On-Campus Total				2018	2019	2020	2018	2019	2020		
Offense Type (includes attempts)	2018	2019	2020	2018	2019	2020	2018	2019	2020	2018	2019	2020	2018	2019	2020
Murder/Non-negligent manslaughter	NA	NA	NA	0	0	0	0	0	0	0	0	0	0	0	0
Negligent Manslaughter	NA	NA	NA	0	0	0	0	0	0	0	0	0	0	0	0
Rape	NA	NA	NA	0	0	0	0	0	0	0	0	0	0	0	0
Forcible Fondling	NA	NA	NA	0	0	0	0	0	0	0	0	0	0	0	0
Statutory Rape	NA	NA	NA	0	0	0	0	0	0	0	0	0	0	0	0
Incest	NA	NA	NA	0	0	0	0	0	0	0	0	0	0	0	0
Aggravated Assault	NA	NA	NA	0	0	0	0	0	0	0	0	0	0	0	0
Robbery	NA	NA	NA	0	0	0	0	0	0	0	0	0	0	0	0
Burglary	NA	NA	NA	0	0	0	0	0	0	0	0	0	0	0	0
Motor Vehicle Theft	NA	NA	NA	0	0	0	0	0	0	NA	0	0	NA	0	0
Arson	NA	NA	NA	0	0	0	0	0	0	NA	0	0	NA	0	0
Domestic Violence	NA	NA	NA	0	0	0	0	0	0	NA	0	0	NA	0	0
Dating Violence	NA	NA	NA	0	0	0	0	0	0	NA	0	0	NA	0	0
Stalking	NA	NA	NA	0	0	0	0	0	0	NA	0	0	NA	0	0
Hate Crimes: (by prejudices)	NA	NA	NA	0	0	0	0	0	0	NA	0	0	NA	0	0
Race	NA	NA	NA	0	0	0	0	0	0	NA	0	0	NA	0	0
Gender	NA	NA	NA	0	0	0	0	0	0	NA	0	0	NA	0	0
Gender Identity	NA	NA	NA	0	0	0	0	0	0	NA	0	0	NA	0	0
Religion	NA	NA	NA	0	0	0	0	0	0	NA	0	0	NA	0	0
Sex Orientation	NA	NA	NA	0	0	0	0	0	0	NA	0	0	NA	0	0
Ethnicity	NA	NA	NA	0	0	0	0	0	0	NA	0	0	NA	0	0
National Origin	NA	NA	NA	0	0	0	0	0	0	NA	0	0	NA	0	0
Disability	NA	NA	NA	0	0	0	0	0	0	NA	0	0	NA	0	0
Liquor Law Violations	NA	NA	NA	0	0	0	0	0	0	NA	0	0	NA	0	0
Arrest	NA	NA	NA	0	0	0	0	0	0	NA	0	0	NA	0	0
Disciplinary Referrals	NA	NA	NA	0	0	0	0	0	0	NA	0	0	NA	0	0
Drug Law Violations	NA	NA	NA	0	0	0	0	0	0	NA	0	0	NA	0	0
Arrest	NA	NA	NA	0	0	0	0	0	0	NA	0	0	NA	0	0
Disciplinary Referrals	NA	NA	NA	0	0	0	0	0	0	NA	0	0	NA	0	0
Weapons Law Violations	NA	NA	NA	0	0	0	0	0	0	NA	0	0	NA	0	0
Arrest	NA	NA	NA	0	0	0	0	0	0	NA	0	0	NA	0	0
Disciplinary Referrals	NA	NA	NA	0	0	0	0	0	0	NA	0	0	NA	0	0

*The SCC Jack J. Huck CEC/ENT Location has no on-campus student housing.

**2015 is the first year the SCC Jack J. Huck CEC/ENT Location was reported independently from other Lincoln Campuses

Education Square

ESQ Geography and Crime Statistics

SCC's downtown Lincoln location, called Education Square, is home to a large Academic Transfer program, along with the Criminal Justice and Graphic Design/Media Arts programs. Education Square is a popular center for University of Nebraska-Lincoln students to pick up classes that will transfer back to the university. In the heart of downtown Lincoln, SCC's Education Square located at 1111 O Street, is an off-campus location with no residence halls.

Security services are provided by the SCC Safety and Security Office and an MOU is in place with the Lancaster County Sheriff's Office. Emergency and non-emergency requests for police services are also provided by the Lincoln Police Department. Emergency fire and medical service at Education Square is handled by the Lincoln Fire and Rescue Department and the Lancaster County Sheriff.

Crime statistics compiled for the Education Square building are all crimes reported to the Campus Security Authorities and the Lincoln Police Department. The crime statistics compiled are those that are reported to have occurred within the campus boundary.

SCC EDUCATION SQUARE ANNUAL SECURITY REPORT 2018, 2019, 2020

The period January 1 to December 31

Total Crimes Reported For:	On-Campus Buildings and Properties**						Non-Campus Building or Property (Total)			Public Property (Total)			Unfounded (Total)		
	On-Campus Student Housing*			On-Campus Total			2018	2019	2020	2018	2019	2020	2018	2019	2020
Offense Type: (includes attempts)	2018	2019	2020	2018	2019	2020	2018	2019	2020	2018	2019	2020	2018	2019	2020
Murder/Non-negligent manslaughter	NA	NA	NA	0	0	0	0	0	0	0	0	0	0	0	0
Negligent Manslaughter	NA	NA	NA	0	0	0	0	0	0	0	0	0	0	0	0
Rape	NA	NA	NA	0	0	0	0	0	0	0	0	0	0	0	0
Forcible Fondling	NA	NA	NA	0	0	0	0	0	0	0	0	0	0	0	0
Statutory Rape	NA	NA	NA	0	0	0	0	0	0	0	0	0	0	0	0
Incest	NA	NA	NA	0	0	0	0	0	0	0	0	0	0	0	0
Aggravated Assault	NA	NA	NA	0	0	0	0	0	0	0	0	0	0	0	0
Robbery	NA	NA	NA	0	0	0	0	0	0	0	0	1	0	0	0
Burglary	NA	NA	NA	0	0	0	0	0	0	0	0	0	0	0	0
Motor Vehicle Theft	NA	NA	NA	0	0	0	0	0	0	0	0	0	0	0	0
Arson	NA	NA	NA	0	0	0	0	0	0	0	0	0	0	0	0
Domestic Violence	NA	NA	NA	0	0	0	0	0	0	0	0	0	0	0	0
Dating Violence	NA	NA	NA	0	0	0	0	0	0	0	0	0	0	0	0
Stalking	NA	NA	NA	0	0	0	0	0	0	0	0	0	0	0	0
Hate Crimes: (by prejudices)	NA	NA	NA	0	0	0	0	0	0	0	0	0	0	0	0
Race	NA	NA	NA	0	0	0	0	0	0	0	0	0	0	0	0
Gender	NA	NA	NA	0	0	0	0	0	0	0	0	0	0	0	0
Gender Identity	NA	NA	NA	0	0	0	0	0	0	0	0	0	0	0	0
Religion	NA	NA	NA	0	0	0	0	0	0	0	0	0	0	0	0
Sex Orientation	NA	NA	NA	0	0	0	0	0	0	0	0	0	0	0	0
Ethnicity	NA	NA	NA	0	0	0	0	0	0	0	0	0	0	0	0
National Origin	NA	NA	NA	0	0	0	0	0	0	0	0	0	0	0	0
Disability	NA	NA	NA	0	0	0	0	0	0	0	0	0	0	0	0
Liquor Law Violations	NA	NA	NA	0	0	0	0	0	0	0	0	0	0	0	0
Arrest	NA	NA	NA	0	0	0	0	0	0	0	0	0	0	0	0
Disciplinary Referrals	NA	NA	NA	0	0	0	0	0	0	0	0	0	0	0	0
Drug Law Violations	NA	NA	NA	0	0	0	0	0	0	0	0	0	0	0	0
Arrest	NA	NA	NA	0	0	0	0	0	0	0	0	0	0	0	0
Disciplinary Referrals	NA	NA	NA	0	0	0	0	0	0	0	0	0	0	0	0
Weapons Law Violations	NA	NA	NA	0	0	0	0	0	0	0	0	0	0	0	0
Arrest	NA	NA	NA	0	0	0	0	0	0	0	0	0	0	0	0
Disciplinary Referrals	NA	NA	NA	0	0	0	0	0	0	0	0	0	0	0	0

*The SCC Education Square Location has no on-campus student housing.

Milford Campus

Milford Geography and Crime Statistics

SCC's campus in Milford, a community of approximately 2,000, is located on the southeast edge of the city at 600 State Street, Milford NE. The campus includes several classroom buildings, a cafeteria, a gymnasium, and residence halls. The Milford Campus is home to approximately 850 students who are enrolled in 27 Programs of Study.

The Security services are provided by the SCC Safety and Security Office and security staff have an MOU in place with the with Milford Police Department. Emergency and non-emergency requests for police services are also provided by the Milford Police Department. Emergency fire and medical service at the Milford campus is handled by the Milford Fire and Rescue Department and the Seward County Sheriff.

Crime statistics compiled for the Milford campus are all crimes reported to the Campus Security Authorities and the Milford Police Department. The crime statistics compiled are those that are reported to have occurred within the campus boundary.

SCC MILFORD CAMPUS ANNUAL SECURITY REPORT 2018, 2019, 2020

The period January 1 to December 31

Total Crimes Reported For:	On-Campus Buildings and Properties						Non-Campus Building or Property (Total)	Public Property (Total)			Unfounded (Total)				
	On-Campus Student Housing			On-Campus Total*				2018	2019	2020	2018	2019	2020		
Offense Type: (includes attempts)	2018	2019	2020	2018	2019	2020	2018	2019	2020	2018	2019	2020	2018	2019	2020
Murder/Non-negligent manslaughter	0	0	0	0	0	0	0	0	0	0	0	0	0	0	0
Negligent Manslaughter	0	0	0	0	0	0	0	0	0	0	0	0	0	0	0
Rape	0	0	0	0	0	0	0	0	0	0	0	0	0	0	0
Forcible Fondling	0	0	0	0	0	0	0	0	0	0	0	0	0	0	0
Statutory Rape	0	0	0	0	0	0	0	0	0	0	0	0	0	0	0
Incest	0	0	0	0	0	0	0	0	0	0	0	0	0	0	0
Aggravated Assault	0	0	0	0	0	0	0	0	0	0	0	0	0	0	0
Robbery	0	0	0	0	0	0	0	0	0	0	0	0	0	0	0
Burglary	0	0	0	0	0	0	0	0	0	0	0	0	0	0	0
Motor Vehicle Theft	0	0	0	0	0	0	0	0	0	0	0	0	0	0	0
Arson	0	0	0	0	0	0	0	0	0	0	0	0	0	0	0
Domestic Violence	0	0	0	0	0	0	0	0	0	0	0	0	0	0	0
Dating Violence	0	0	0	0	0	0	0	0	0	0	0	0	0	0	0
Stalking	0	0	0	0	0	0	0	0	0	0	0	0	0	0	0
Hate Crimes: (by prejudices)	0	0	0	0	0	0	0	0	0	0	0	0	0	0	0
Race	0	0	0	0	0	0	0	0	0	0	0	0	0	0	0
Gender	0	0	0	0	0	0	0	0	0	0	0	0	0	0	0
Gender Identity	0	0	0	0	0	0	0	0	0	0	0	0	0	0	0
Religion	0	0	0	0	0	0	0	0	0	0	0	0	0	0	0
Sex Orientation	0	0	0	0	0	0	0	0	0	0	0	0	0	0	0
Ethnicity	0	0	0	0	0	0	0	0	0	0	0	0	0	0	0
National Origin	0	0	0	0	0	0	0	0	0	0	0	0	0	0	0
Disability	0	0	0	0	0	0	0	0	0	0	0	0	0	0	0
Liquor Law Violations	14	16	6	14	16	6	0	0	0	0	0	0	0	0	0
Arrest	0	0	0	0	0	0	0	0	0	0	0	0	0	0	0
Disciplinary Referrals	14	16	6	14	16	6	0	0	0	0	0	0	0	0	0
Drug Law Violations	0	1	1	0	1	1	0	0	0	0	0	0	0	0	0
Arrest	0	0	0	0	0	0	0	0	0	0	0	0	0	0	0
Disciplinary Referrals	0	1	1	0	1	1	0	0	0	0	0	0	0	0	0
Weapons Law Violations	1	2	2	1	2	2	0	0	0	0	0	0	0	0	0
Arrest	0	0	2	0	0	2	0	0	0	0	0	0	0	0	0
Disciplinary Referrals	1	2	0	1	2	0	0	0	0	0	0	0	0	0	0

*Includes On-Campus Student Housing

Learning Centers

To serve the 15-county service area better, Southeast Community College opened six Learning Centers in Falls City, Hebron, Nebraska City, Plattsmouth, Wahoo and York. The location of the Learning Centers is geographically distributed across the service area to maximize the number of individuals living within a 35-mile radius from the centers. Programming at each center is determined by industry and community needs and includes both credit and non-credit courses.

The Learning Centers are supervised on site by a dedicated coordinator with shared administration by primary campus personnel. The security services are provided split between the three campus SCC Safety and Security Offices. Emergency and non-emergency requests for police services are also provided by the local law enforcement. Crime statistics compiled for each Learning Center are all crimes reported to the Campus Security Authorities and local law enforcement. The crime statistics compiled are those that are reported to have occurred within the campus boundary. The Learning Centers do not have any on-campus housing.

Falls City Learning Center

116 W 19th Street
Falls City NE 68355

Plattsmouth Learning Center

537 Main Street
Plattsmouth NE 68048

Hebron Learning Center

610 Jefferson Avenue
Hebron NE 68370

Wahoo Learning Center

536 N Broadway Street
Falls City NE 68066

Nebraska City Learning Center

819 Central Avenue
Nebraska City NE 68410

York Learning Center

3130 Holen Avenue
York NE 68467

SCC FALLS CITY LEARNING CENTER ANNUAL SECURITY REPORT 2018, 2019, 2020

The period January 1 to December 31

Total Crimes Reported For:	On-Campus Buildings and Properties						Non-Campus Building or Property (Total)			Public Property (Total)			Unfounded (Total)		
	On-Campus Student Housing*			On-Campus Total			2018	2019	2020	2018	2019	2020	2018	2019	2020
Offense Type: (includes attempts)	2018	2019	2020	2018	2019	2020	2018	2019	2020	2018	2019	2020	2018	2019	2020
Murder/Non-negligent manslaughter	NA	NA	NA	0	0	0	0	0	0	0	0	0	0	0	0
Negligent Manslaughter	NA	NA	NA	0	0	0	0	0	0	0	0	0	0	0	0
Rape	NA	NA	NA	0	0	0	0	0	0	0	0	0	0	0	0
Forcible Fondling	NA	NA	NA	0	0	0	0	0	0	0	0	0	0	0	0
Statutory Rape	NA	NA	NA	0	0	0	0	0	0	0	0	0	0	0	0
Incest	NA	NA	NA	0	0	0	0	0	0	0	0	0	0	0	0
Aggravated Assault	NA	NA	NA	0	0	0	0	0	0	0	0	0	0	0	0
Robbery	NA	NA	NA	0	0	0	0	0	0	0	0	0	0	0	0
Burglary	NA	NA	NA	0	0	0	0	0	0	0	0	0	0	0	0
Motor Vehicle Theft	NA	NA	NA	0	0	0	0	0	0	0	0	0	0	0	0
Arson	NA	NA	NA	0	0	0	0	0	0	0	0	0	0	0	0
Domestic Violence	NA	NA	NA	0	0	0	0	0	0	0	0	0	0	0	0
Dating Violence	NA	NA	NA	0	0	0	0	0	0	0	0	0	0	0	0
Stalking	NA	NA	NA	0	0	0	0	0	0	0	0	0	0	0	0
Hate Crimes: (by prejudices)	NA	NA	NA	0	0	0	0	0	0	0	0	0	0	0	0
Race	NA	NA	NA	0	0	0	0	0	0	0	0	0	0	0	0
Gender	NA	NA	NA	0	0	0	0	0	0	0	0	0	0	0	0
Gender Identity	NA	NA	NA	0	0	0	0	0	0	0	0	0	0	0	0
Religion	NA	NA	NA	0	0	0	0	0	0	0	0	0	0	0	0
Sex Orientation	NA	NA	NA	0	0	0	0	0	0	0	0	0	0	0	0
Ethnicity	NA	NA	NA	0	0	0	0	0	0	0	0	0	0	0	0
National Origin	NA	NA	NA	0	0	0	0	0	0	0	0	0	0	0	0
Disability	NA	NA	NA	0	0	0	0	0	0	0	0	0	0	0	0
Liquor Law Violations	NA	NA	NA	0	0	0	0	0	0	0	0	0	0	0	0
Arrest	NA	NA	NA	0	0	0	0	0	0	0	0	0	0	0	0
Disciplinary Referrals	NA	NA	NA	0	0	0	0	0	0	0	0	0	0	0	0
Drug Law Violations	NA	NA	NA	0	0	0	0	0	0	0	0	0	0	0	0
Arrest	NA	NA	NA	0	0	0	0	0	0	0	0	0	0	0	0
Disciplinary Referrals	NA	NA	NA	0	0	0	0	0	0	0	0	0	0	0	0
Weapons Law Violations	NA	NA	NA	0	0	0	0	0	0	0	0	0	0	0	0
Arrest	NA	NA	NA	0	0	0	0	0	0	0	0	0	0	0	0
Disciplinary Referrals	NA	NA	NA	0	0	0	0	0	0	0	0	0	0	0	0

**SCC HEBRON LEARNING CENTER
ANNUAL SECURITY REPORT
2018, 2019, 2020**

The period January 1 to December 31

Total Crimes Reported For:	On-Campus Buildings and Properties						Non-Campus Building or Property (Total)			Public Property (Total)			Unfounded (Total)		
	On-Campus Student Housing*			On-Campus Total			2018	2019	2020	2018	2019	2020	2018	2019	2020
Offense Type: (includes attempts)	2018	2019	2020	2018	2019	2020	2018	2019	2020	2018	2019	2020	2018	2019	2020
Murder/Non-negligent manslaughter	NA	NA	NA	0	0	0	0	0	0	0	0	0	0	0	0
Negligent Manslaughter	NA	NA	NA	0	0	0	0	0	0	0	0	0	0	0	0
Rape	NA	NA	NA	0	0	0	0	0	0	0	0	0	0	0	0
Forcible Fondling	NA	NA	NA	0	0	0	0	0	0	0	0	0	0	0	0
Statutory Rape	NA	NA	NA	0	0	0	0	0	0	0	0	0	0	0	0
Incest	NA	NA	NA	0	0	0	0	0	0	0	0	0	0	0	0
Aggravated Assault	NA	NA	NA	0	0	0	0	0	0	0	0	0	0	0	0
Robbery	NA	NA	NA	0	0	0	0	0	0	0	0	0	0	0	0
Burglary	NA	NA	NA	0	0	0	0	0	0	0	0	0	0	0	0
Motor Vehicle Theft	NA	NA	NA	0	0	0	0	0	0	0	0	0	0	0	0
Arson	NA	NA	NA	0	0	0	0	0	0	0	0	0	0	0	0
Domestic Violence	NA	NA	NA	0	0	0	0	0	0	0	0	0	0	0	0
Dating Violence	NA	NA	NA	0	0	0	0	0	0	0	0	0	0	0	0
Stalking	NA	NA	NA	0	0	0	0	0	0	0	0	0	0	0	0
Hate Crimes: (by prejudices)	NA	NA	NA	0	0	0	0	0	0	0	0	0	0	0	0
Race	NA	NA	NA	0	0	0	0	0	0	0	0	0	0	0	0
Gender	NA	NA	NA	0	0	0	0	0	0	0	0	0	0	0	0
Gender Identity	NA	NA	NA	0	0	0	0	0	0	0	0	0	0	0	0
Religion	NA	NA	NA	0	0	0	0	0	0	0	0	0	0	0	0
Sex Orientation	NA	NA	NA	0	0	0	0	0	0	0	0	0	0	0	0
Ethnicity	NA	NA	NA	0	0	0	0	0	0	0	0	0	0	0	0
National Origin	NA	NA	NA	0	0	0	0	0	0	0	0	0	0	0	0
Disability	NA	NA	NA	0	0	0	0	0	0	0	0	0	0	0	0
Liquor Law Violations	NA	NA	NA	0	0	0	0	0	0	0	0	0	0	0	0
Arrest	NA	NA	NA	0	0	0	0	0	0	0	0	0	0	0	0
Disciplinary Referrals	NA	NA	NA	0	0	0	0	0	0	0	0	0	0	0	0
Drug Law Violations	NA	NA	NA	0	0	0	0	0	0	0	0	0	0	0	0
Arrest	NA	NA	NA	0	0	0	0	0	0	0	0	0	0	0	0
Disciplinary Referrals	NA	NA	NA	0	0	0	0	0	0	0	0	0	0	0	0
Weapons Law Violations	NA	NA	NA	0	0	0	0	0	0	0	0	0	0	0	0
Arrest	NA	NA	NA	0	0	0	0	0	0	0	0	0	0	0	0
Disciplinary Referrals	NA	NA	NA	0	0	0	0	0	0	0	0	0	0	0	0

SCC NEBRASKA CITY LEARNING CENTER ANNUAL SECURITY REPORT 2018, 2019, 2020

The period January 1 to December 31

Total Crimes Reported For:	On-Campus Buildings and Properties						Non-Campus Building or Property (Total)			Public Property (Total)			Unfounded (Total)		
	On-Campus Student Housing*			On-Campus Total			2018	2019	2020	2018	2019	2020	2018	2019	2020
Offense Type: (includes attempts)	2018	2019	2020	2018	2019	2020	2018	2019	2020	2018	2019	2020	2018	2019	2020
Murder/Non-negligent manslaughter	NA	NA	NA	0	0	0	0	0	0	0	0	0	0	0	0
Negligent Manslaughter	NA	NA	NA	0	0	0	0	0	0	0	0	0	0	0	0
Rape	NA	NA	NA	0	0	0	0	0	0	0	0	0	0	0	0
Forcible Fondling	NA	NA	NA	0	0	0	0	0	0	0	0	0	0	0	0
Statutory Rape	NA	NA	NA	0	0	0	0	0	0	0	0	0	0	0	0
Incest	NA	NA	NA	0	0	0	0	0	0	0	0	0	0	0	0
Aggravated Assault	NA	NA	NA	0	0	0	0	0	0	0	0	0	0	0	0
Robbery	NA	NA	NA	0	0	0	0	0	0	0	0	0	0	0	0
Burglary	NA	NA	NA	0	0	0	0	0	0	0	0	0	0	0	0
Motor Vehicle Theft	NA	NA	NA	0	0	0	0	0	0	0	0	0	0	0	0
Arson	NA	NA	NA	0	0	0	0	0	0	0	0	0	0	0	0
Domestic Violence	NA	NA	NA	0	0	0	0	0	0	0	0	0	0	0	0
Dating Violence	NA	NA	NA	0	0	0	0	0	0	0	0	0	0	0	0
Stalking	NA	NA	NA	0	0	0	0	0	0	0	0	0	0	0	0
Hate Crimes: (by prejudices)	NA	NA	NA	0	0	0	0	0	0	0	0	0	0	0	0
Race	NA	NA	NA	0	0	0	0	0	0	0	0	0	0	0	0
Gender	NA	NA	NA	0	0	0	0	0	0	0	0	0	0	0	0
Gender Identity	NA	NA	NA	0	0	0	0	0	0	0	0	0	0	0	0
Religion	NA	NA	NA	0	0	0	0	0	0	0	0	0	0	0	0
Sex Orientation	NA	NA	NA	0	0	0	0	0	0	0	0	0	0	0	0
Ethnicity	NA	NA	NA	0	0	0	0	0	0	0	0	0	0	0	0
National Origin	NA	NA	NA	0	0	0	0	0	0	0	0	0	0	0	0
Disability	NA	NA	NA	0	0	0	0	0	0	0	0	0	0	0	0
Liquor Law Violations	NA	NA	NA	0	0	0	0	0	0	0	0	0	0	0	0
Arrest	NA	NA	NA	0	0	0	0	0	0	0	0	0	0	0	0
Disciplinary Referrals	NA	NA	NA	0	0	0	0	0	0	0	0	0	0	0	0
Drug Law Violations	NA	NA	NA	0	0	0	0	0	0	0	0	0	0	0	0
Arrest	NA	NA	NA	0	0	0	0	0	0	0	0	0	0	0	0
Disciplinary Referrals	NA	NA	NA	0	0	0	0	0	0	0	0	0	0	0	0
Weapons Law Violations	NA	NA	NA	0	0	0	0	0	0	0	0	0	0	0	0
Arrest	NA	NA	NA	0	0	0	0	0	0	0	0	0	0	0	0
Disciplinary Referrals	NA	NA	NA	0	0	0	0	0	0	0	0	0	0	0	0

SCC PLATTSMOUTH LEARNING CENTER ANNUAL SECURITY REPORT 2018, 2019, 2020

The period January 1 to December 31

Total Crimes Reported For:	On-Campus Buildings and Properties						Non-Campus Building or Property (Total)			Public Property (Total)			Unfounded (Total)		
	On-Campus Student Housing*			On-Campus Total			2018	2019	2020	2018	2019	2020	2018	2019	2020
Offense Type: (includes attempts)	2018	2019	2020	2018	2019	2020	2018	2019	2020	2018	2019	2020	2018	2019	2020
Murder/Non-negligent manslaughter	NA	NA	NA	0	0	0	0	0	0	0	0	0	0	0	0
Negligent Manslaughter	NA	NA	NA	0	0	0	0	0	0	0	0	0	0	0	0
Rape	NA	NA	NA	0	0	0	0	0	0	0	0	0	0	0	0
Forcible Fondling	NA	NA	NA	0	0	0	0	0	0	0	0	0	0	0	0
Statutory Rape	NA	NA	NA	0	0	0	0	0	0	0	0	0	0	0	0
Incest	NA	NA	NA	0	0	0	0	0	0	0	0	0	0	0	0
Aggravated Assault	NA	NA	NA	0	0	0	0	0	0	0	0	0	0	0	0
Robbery	NA	NA	NA	0	0	0	0	0	0	0	0	0	0	0	0
Burglary	NA	NA	NA	0	0	0	0	0	0	0	0	0	0	0	0
Motor Vehicle Theft	NA	NA	NA	0	0	0	0	0	0	0	0	0	0	0	0
Arson	NA	NA	NA	0	0	0	0	0	0	0	0	0	0	0	0
Domestic Violence	NA	NA	NA	0	0	0	0	0	0	0	0	0	0	0	0
Dating Violence	NA	NA	NA	0	0	0	0	0	0	0	0	0	0	0	0
Stalking	NA	NA	NA	0	0	0	0	0	0	0	0	0	0	0	0
Hate Crimes: (by prejudices)	NA	NA	NA	0	0	0	0	0	0	0	0	0	0	0	0
Race	NA	NA	NA	0	0	0	0	0	0	0	0	0	0	0	0
Gender	NA	NA	NA	0	0	0	0	0	0	0	0	0	0	0	0
Gender Identity	NA	NA	NA	0	0	0	0	0	0	0	0	0	0	0	0
Religion	NA	NA	NA	0	0	0	0	0	0	0	0	0	0	0	0
Sex Orientation	NA	NA	NA	0	0	0	0	0	0	0	0	0	0	0	0
Ethnicity	NA	NA	NA	0	0	0	0	0	0	0	0	0	0	0	0
National Origin	NA	NA	NA	0	0	0	0	0	0	0	0	0	0	0	0
Disability	NA	NA	NA	0	0	0	0	0	0	0	0	0	0	0	0
Liquor Law Violations	NA	NA	NA	0	0	0	0	0	0	0	0	0	0	0	0
Arrest	NA	NA	NA	0	0	0	0	0	0	0	0	0	0	0	0
Disciplinary Referrals	NA	NA	NA	0	0	0	0	0	0	0	0	0	0	0	0
Drug Law Violations	NA	NA	NA	0	0	0	0	0	0	0	0	0	0	0	0
Arrest	NA	NA	NA	0	0	0	0	0	0	0	0	0	0	0	0
Disciplinary Referrals	NA	NA	NA	0	0	0	0	0	0	0	0	0	0	0	0
Weapons Law Violations	NA	NA	NA	0	0	0	0	0	0	0	0	0	0	0	0
Arrest	NA	NA	NA	0	0	0	0	0	0	0	0	0	0	0	0
Disciplinary Referrals	NA	NA	NA	0	0	0	0	0	0	0	0	0	0	0	0

SCC WAHOO LEARNING CENTER ANNUAL SECURITY REPORT 2018, 2019, 2020

The period January 1 to December 31

Total Crimes Reported For:	On-Campus Buildings and Properties						Non-Campus Building or Property (Total)			Public Property (Total)			Unfounded (Total)		
	On-Campus Student Housing*			On-Campus Total			2018	2019	2020	2018	2019	2020	2018	2019	2020
Offense Type: (includes attempts)	2018	2019	2020	2018	2019	2020	2018	2019	2020	2018	2019	2020	2018	2019	2020
Murder/Non-negligent manslaughter	NA	NA	NA	0	0	0	0	0	0	0	0	0	0	0	0
Negligent Manslaughter	NA	NA	NA	0	0	0	0	0	0	0	0	0	0	0	0
Rape	NA	NA	NA	0	0	0	0	0	0	0	0	0	0	0	0
Forcible Fondling	NA	NA	NA	0	0	0	0	0	0	0	0	0	0	0	0
Statutory Rape	NA	NA	NA	0	0	0	0	0	0	0	0	0	0	0	0
Incest	NA	NA	NA	0	0	0	0	0	0	0	0	0	0	0	0
Aggravated Assault	NA	NA	NA	0	0	0	0	0	0	0	0	0	0	0	0
Robbery	NA	NA	NA	0	0	0	0	0	0	0	0	0	0	0	0
Burglary	NA	NA	NA	0	0	0	0	0	0	0	0	0	0	0	0
Motor Vehicle Theft	NA	NA	NA	0	0	0	0	0	0	0	0	0	0	0	0
Arson	NA	NA	NA	0	0	0	0	0	0	0	0	0	0	0	0
Domestic Violence	NA	NA	NA	0	0	0	0	0	0	0	0	0	0	0	0
Dating Violence	NA	NA	NA	0	0	0	0	0	0	0	0	0	0	0	0
Stalking	NA	NA	NA	0	0	0	0	0	0	0	0	0	0	0	0
Hate Crimes: (by prejudices)	NA	NA	NA	0	0	0	0	0	0	0	0	0	0	0	0
Race	NA	NA	NA	0	0	0	0	0	0	0	0	0	0	0	0
Gender	NA	NA	NA	0	0	0	0	0	0	0	0	0	0	0	0
Gender Identity	NA	NA	NA	0	0	0	0	0	0	0	0	0	0	0	0
Religion	NA	NA	NA	0	0	0	0	0	0	0	0	0	0	0	0
Sex Orientation	NA	NA	NA	0	0	0	0	0	0	0	0	0	0	0	0
Ethnicity	NA	NA	NA	0	0	0	0	0	0	0	0	0	0	0	0
National Origin	NA	NA	NA	0	0	0	0	0	0	0	0	0	0	0	0
Disability	NA	NA	NA	0	0	0	0	0	0	0	0	0	0	0	0
Liquor Law Violations	NA	NA	NA	0	0	0	0	0	0	0	0	0	0	0	0
Arrest	NA	NA	NA	0	0	0	0	0	0	0	0	0	0	0	0
Disciplinary Referrals	NA	NA	NA	0	0	0	0	0	0	0	0	0	0	0	0
Drug Law Violations	NA	NA	NA	0	0	0	0	0	0	0	0	0	0	0	0
Arrest	NA	NA	NA	0	0	0	0	0	0	0	0	0	0	0	0
Disciplinary Referrals	NA	NA	NA	0	0	0	0	0	0	0	0	0	0	0	0
Weapons Law Violations	NA	NA	NA	0	0	0	0	0	0	0	0	0	0	0	0
Arrest	NA	NA	NA	0	0	0	0	0	0	0	0	0	0	0	0
Disciplinary Referrals	NA	NA	NA	0	0	0	0	0	0	0	0	0	0	0	0

SCC YORK LEARNING CENTER ANNUAL SECURITY REPORT 2018, 2019, 2020

The period January 1 to December 31

Total Crimes Reported For:	On-Campus Buildings and Properties						Non-Campus Building or Property (Total)			Public Property (Total)			Unfounded (Total)		
	On-Campus Student Housing*			On-Campus Total			2018	2019	2020	2018	2019	2020	2018	2019	2020
Offense Type: (includes attempts)	2018	2019	2020	2018	2019	2020	2018	2019	2020	2018	2019	2020	2018	2019	2020
Murder/Non-negligent manslaughter	NA	NA	NA	0	0	0	0	0	0	0	0	0	0	0	0
Negligent Manslaughter	NA	NA	NA	0	0	0	0	0	0	0	0	0	0	0	0
Rape	NA	NA	NA	0	0	0	0	0	0	0	0	0	0	0	0
Forcible Fondling	NA	NA	NA	0	0	0	0	0	0	0	0	0	0	0	0
Statutory Rape	NA	NA	NA	0	0	0	0	0	0	0	0	0	0	0	0
Incest	NA	NA	NA	0	0	0	0	0	0	0	0	0	0	0	0
Aggravated Assault	NA	NA	NA	0	0	0	0	0	0	0	0	0	0	0	0
Robbery	NA	NA	NA	0	0	0	0	0	0	0	0	0	0	0	0
Burglary	NA	NA	NA	0	0	0	0	0	0	0	0	0	0	0	0
Motor Vehicle Theft	NA	NA	NA	0	0	0	0	0	0	0	0	0	0	0	0
Arson	NA	NA	NA	0	0	0	0	0	0	0	0	0	0	0	0
Domestic Violence	NA	NA	NA	0	0	0	0	0	0	0	0	0	0	0	0
Dating Violence	NA	NA	NA	0	0	0	0	0	0	0	0	0	0	0	0
Stalking	NA	NA	NA	0	0	0	0	0	0	0	0	0	0	0	0
Hate Crimes: (by prejudices)	NA	NA	NA	0	0	0	0	0	0	0	0	0	0	0	0
Race	NA	NA	NA	0	0	0	0	0	0	0	0	0	0	0	0
Gender	NA	NA	NA	0	0	0	0	0	0	0	0	0	0	0	0
Gender Identity	NA	NA	NA	0	0	0	0	0	0	0	0	0	0	0	0
Religion	NA	NA	NA	0	0	0	0	0	0	0	0	0	0	0	0
Sex Orientation	NA	NA	NA	0	0	0	0	0	0	0	0	0	0	0	0
Ethnicity	NA	NA	NA	0	0	0	0	0	0	0	0	0	0	0	0
National Origin	NA	NA	NA	0	0	0	0	0	0	0	0	0	0	0	0
Disability	NA	NA	NA	0	0	0	0	0	0	0	0	0	0	0	0
Liquor Law Violations	NA	NA	NA	0	0	0	0	0	0	0	0	0	0	0	0
Arrest	NA	NA	NA	0	0	0	0	0	0	0	0	0	0	0	0
Disciplinary Referrals	NA	NA	NA	0	0	0	0	0	0	0	0	0	0	0	0
Drug Law Violations	NA	NA	NA	0	0	0	0	0	0	0	0	0	0	0	0
Arrest	NA	NA	NA	0	0	0	0	0	0	0	0	0	0	0	0
Disciplinary Referrals	NA	NA	NA	0	0	0	0	0	0	0	0	0	0	0	0
Weapons Law Violations	NA	NA	NA	0	0	0	0	0	0	0	0	0	0	0	0
Arrest	NA	NA	NA	0	0	0	0	0	0	0	0	0	0	0	0
Disciplinary Referrals	NA	NA	NA	0	0	0	0	0	0	0	0	0	0	0	0

Chapter 4

Campus Fire Safety Report

Campus Fire Safety Annual Compliance Report

The Higher Education Opportunity Act (HEOA),²⁹ requires all institutions of higher education that provide residential housing facilities for students to develop an annual fire safety report.

Contents of this report reflect the requirements outlined in HEOA. Elements of the Beatrice and Milford campus fire safety program consist of:

- Fire prevention policies and practices (Residence Life Handbook)
- Fire safety educational and training initiatives,
- Description of fire protection equipment
- Description of evacuation procedures
- Fire safety statistics
- Proposed plans for future improvements to the campus fire safety program.

The campus fire safety program is administered and maintained by the Southeast Community College Safety and Security Office in conjunction with the campus security personnel. This public disclosure is intended to inform current and prospective students and employees of the fire safety programs and policies in place at SCC, and SCC's state of readiness to detect and respond appropriately to fire-related emergencies.³⁰

Program Objectives

The objective of the campus fire safety program is to recognize hazardous conditions and act before such conditions result in a fire emergency. This goal is accomplished by:

- Conducting periodic review and update of fire prevention policies.
- Conducting regularly scheduled fire drills in SCC-owned residence halls and college buildings.
- Promoting fire safety awareness by conducting regularly scheduled training programs on fire prevention and emergency evacuation procedures.³¹
- Inspecting, testing and maintaining fire protection systems in accordance with National Fire Protection Association (NFPA) standards

²⁹ Public Law 110-315

³⁰ Hard copies of the report are available for public review by contacting the Campus Dean of Students or by visiting the campus office Monday through Friday, 8:00 a.m. to 5:00 p.m. excluding holidays.

³¹ Described in Appendix F §D-5

- Performing plan review and code consultation related to current capital improvement and remodeling projects.
- Mitigating fire hazards utilizing the information provided from regularly scheduled fire safety inspections performed by SCC and SCC's property insurance loss control consultant and fire protection consultants.

Residence Halls Fire Prevention Policies and Procedures

Several fire prevention policies and procedures have been developed and implemented in an effort to complement the program objectives. The SCC Safety Management Plan served as a guide during the development of these policies. Detailed information about what to do in case of a fire emergency can be found in the Campus Safety Manual or in [Residence Life Handbook](#).

SCC houses students in three apartment-style residence halls and one suite-style residence hall on the Beatrice Campus and one traditional-style residence hall on the Milford Campus. Detailed information regarding Residence Hall policies and procedures can be found in the online [Residence Life Handbook](#).

Procedures for Evacuation in the Event of a Fire

When a fire alarm sounds, or a staff member informs you to evacuate the building:

- Remain calm
- Close windows and turn on lights
- Close apartment/room doors (DO NOT lock doors) and exit the building
- Each resident must proceed to their building/floor 's designated evacuation areas
- Do not re-enter the building until Residence Life Staff says it is safe to go back inside

Reporting a Fire

In the event of a fire, Call 911. In addition, contact the Assistant Campus Director/Dean of Students to report a fire that has occurred:³²

³² See [Appendix A](#) for contact information.

Residence Hall Fire Safety-Related Rules

Fire Safety Systems

Fire safety systems and equipment includes but is not limited to, smoke/heat detectors, sprinkler heads, fire extinguishers, pull stations, alarm panels, and exterior doors. Tampering with fire safety equipment is a serious offense and may be grounds for dismissal from student housing.

Smoking

The student apartment complex and residence halls are a smoke-free. Smoking or the use of vaping products is not permitted inside the buildings, or any halls, stairwells, patios or balconies. Smoking must only take place in the designated smoking areas outside each residence hall.

Electrical Appliances

If a refrigerator or microwave is not provided, residents are allowed to have one of each of the following which must be plugged directly into the power outlet

- Small refrigerator no larger than four cubic feet and can draw no more than 2 AMPS.
- Small microwave no bigger than 1000 WATTS.
- Keurig-style Coffee maker

Residents are not permitted to have any of the following appliances within the apartments/rooms:

- Space or electrical heaters
- Hotplates
- Toaster ovens
- Countertop grills
- Rice cookers
- Candles/incense/candle warmers
- Freezers
- Washers/dryers
- Halogen bulb lamps
- Any other appliance with open flames, heating coils or which pose an electric overload hazard.

Fire Safety Education and Training Initiatives

All Residence Life Staff receive fire safety training prior to the start of every fall semester. Topics include a review of the fire prevention policies, weather safety and [emergency evacuation](#).

[procedures](#). In addition, each apartment/hall has emergency evacuation maps posted to direct occupants to primary and secondary exits. Fire drills are conducted at a minimum, twice annually each fall and spring term in coordination with the campus Safety and Security Coordinator/Specialist. Fire safety training programs are also provided to other student, staff and faculty on-campus by request. This program typically consists of a brief review of fire prevention policies and evacuation procedures.

The Beatrice and Milford Campus Residence hall held the following fire drills on their respective campuses.

Beatrice: Due to the COVID-19 pandemic emergency, and early dismissal of student residents, no fire drills were conducted in spring 2020. No students resided on the Beatrice campus for summer 2020.

A fire drill was conducted in each of the residence halls on October 29, 2020 at 2:14pm. Evacuation time was 3:54³³ for Homestead, and 2:38 for Eisenhower. The precise time is not available for Washington, but it was less than Eisenhower's evacuation time due to occupancy.

Milford: Due to the COVID-19 pandemic emergency, and early dismissal of student residents, no fire drills were conducted in spring or summer 2020. Fire drills were conducted in all three dormitories (Cornhusker, Pioneer, and Prairie Hall) on October 27, 2020. In all cases, the dormitories were evacuated within four (4) minutes.

³³ Evacuation times are expressed in minutes: seconds.

SCC Fire Statistics for 2018, 2019 and 2020

Beatrice Fire Statistics

Summary of Fires Beatrice Campus					
Residential Facilities	Number of Fires	Cause of Fire	Number of Injuries that Required Treatment at a Medical Facility	Number of Deaths Related to Fire	Value of Property Caused by Fire
2018					
Eisenhower Hall	0	NA0	NA	NA	Na
Hoover Hall	0	NA	NA	NA	NA
Roosevelt Hall	0	NA	NA	NA	NA
Washington Hall	0	NA	NA	NA	NA
2019					
Eisenhower Hall	0	NA	NA	NA	NA
Hoover Hall	0	NA	NA	NA	NA
Roosevelt Hall	0	NA	NA	NA	NA
Washington Hall	0	NA	NA	NA	NA
Homestead Hall	1	Microwave Fire	0	0	Less than \$99
2020					
Adams Hall	0	NA	NA	NA	NA
Eisenhower Hall	0	NA	NA	NA	NA
Hoover Hall	0	NA	NA	NA	NA
Jackson Hall	0	NA	NA	NA	NA
Roosevelt Hall	0	NA	NA	NA	NA
Washington Hall	0	NA	NA	NA	NA
Homestead Hall	0	NA	NA	NA	NA

Milford Fire Statistics

Summary of Fires Milford Campus					
Residential Facilities	Number of Fires	Cause of Fire	Number of Injuries that Required Treatment at a Medical Facility	Number of Deaths Related to Fire	Value of Property Caused by Fire
2018					
Cornhusker Hall	0	NA	NA	NA	NA
Nebraska Hall	0	NA	NA	NA	NA
Pioneer Complex	0	NA	NA	NA	NA
2019					
Cornhusker Hall	0	NA	NA	NA	NA
Nebraska Hall	0	NA	NA	NA	NA
Pioneer Complex	0	NA	NA	NA	NA
2020					
Cornhusker Hall	0	NA	NA	NA	NA
Nebraska Hall	0	NA	NA	NA	NA
Pioneer Complex	0	NA	NA	NA	NA

Glossary of Terms

Term	Definition
Active Shooter or Active Threat	An individual actively engaged in or attempting to injure or cause harm to people in a confined and populated area with no typical pattern or method to their selection of victims.
Alcohol	The term "alcohol" as used in this policy means any product of distillation or a fermented liquid which is intended for human consumption, and which is defined in Nebraska statutes.
Campus Security Authorities (CSA)	For Clery Act reporting purposes, "Campus Security Authorities (CSAs)" are SCC officials who have significant responsibility for student and campus activities, including, but not limited to, student activities, student athletics, and student judicial and discipline proceedings.
Controlled Substance	<p>A controlled substance is defined as prescription medication that is not prescribed to the person in possession, illegal drugs, or any other type of material, compound, or substance that is considered to be restricted or controlled by local, state, and federal laws and statutes. This includes paraphernalia.</p> <p>The term "controlled substance" as used in 41 U.S.C. Section 8101, refers to substances included in Schedules I through V and as further defined by the code of Federal Regulations, 21 C.F.R. 1300.11 through 1300.15. The term does not include the use of a controlled substance pursuant to a valid prescription of other uses authorized by law.</p>
Dating Violence	A pattern of abusive behaviors (physical, verbal and/or emotional) used to exert power and control over a dating partner. The existence of this relationship is gauged by the length, type and frequency of interaction within the relationship.
Domestic Abuse/Violence	Domestic abuse/violence includes crimes of violence, physical pain, bodily injury and/or nonconsensual sexual contact or penetration committed by a current or former spouse or intimate partners of the victim, by a person with whom the victim shares a child in common, by a person who is cohabitating with or has cohabitated with the victim as a spouse.
Emergency Notification	Emergencies may be more localized, than a timely warning therefore notifications may also be tailored exclusively to the segment of the campus at risk. If the risk expands, the notification should also expand to include the new areas being threatened.
Evacuate	<p>Evacuate focuses on moving students and staff from one location to another.</p> <p><i>Students:</i> bring phone but leave rest of things behind. Be ready to show hands and be prepared for alternative instructions.</p> <p><i>Faculty and Staff:</i> grab roster, if possible, lead students to evacuation location. Take roll to account for students</p>
Good Faith	Meaning there is a reasonable basis for believing the information is not rumor or hearsay and there is little reason to doubt the validity of the

Term	Definition
Harassment	<p>information.</p> <p>Harassment is the act of continued and regular unwanted actions against a victim. This may include anything from racial epithets to annoying or malicious remarks.</p>
Hate Crime	<p>A criminal act motivated by another person's (usually the victim's) race, color, religion, national origin, gender, sexual orientation, gender identity, or disability. Also called a bias crime. Can be a crime committed against a person, property, or society.</p>
Legitimate Educational Interest	<p>A school official has a legitimate educational interest if the official needs to review an education record in order to fulfill his or her professional responsibility.</p>
Lockdown	<p>Lockdown focuses on responding to a threat INSIDE the building. Doors are locked, lights are turned off and everyone gets out of sight.</p> <p><i>Students:</i> move away from sight, maintaining silence and prepare to evade or defend</p> <p><i>Faculty and Staff:</i> lock classroom/office doors with lights out and moving away from sight. Maintain silence and prepare to evade or defend. Do not open the door, accounting for all students.</p>
Lockout	<p>Lockout focuses on securing the perimeters when there is a threat or hazard OUTSIDE of the building.</p> <p><i>Students:</i> return to inside the building with business as usual.</p> <p><i>Faculty and Staff:</i> recover students and staff from outside the building with increased situational awareness as business is continued as usual, being sure to account for all students.</p>
Major Disruption	<p>Situations that cause major disruption to campus operations. Examples include, but are not limited to:</p> <ul style="list-style-type: none"> ▪ Hazardous Material Incident ▪ Weather-related situations (hurricane/flooding/tsunami) ▪ Fire ▪ Earthquake/Volcanic Eruption ▪ Power outages ▪ Water emergencies ▪ Pandemic
Need to Know	<p>Usually with regard to confidential information, where such information is shared only with those persons or parties with who have a need or require this information, e.g. an employee will require information that is essential for the employee to perform his or her job.</p>
Preponderance of Evidence Standard	<p>A standard of proof by which it is shown that it is more likely than not that a violation occurred.</p>
Professional Counselor	<p>A professional counselor is a person whose official responsibilities include providing mental health counseling to members of the institution's community and who is functioning within the scope of their license or certification.</p>
Responsible Employee	<p>A responsible employee is any employee who has the authority to act to redress sexual violence, who has been given the duty to report to appropriate school officials about incidents of sexual violence or any other misconduct by students, or who a student could reasonably believe has this</p>

Term	Definition
Retaliation	<p>authority or responsibility. Schools must make clear to all of its employ</p> <p>Retaliation is any overt or covert act of reprisal, interference, restraint, penalty, discrimination, intimidation, or harassment against one or more individuals for exercising their rights (or supporting others for exercising their rights)</p>
Security Alert	<p>Situations where a series of crimes have occurred and other man-made incidents. Examples include, but are not limited to:</p> <ul style="list-style-type: none"> ▪ Active Shooter ▪ Bomb Threat/Explosion/Suspicious Packages ▪ Burglaries (unoccupied rooms/buildings/structures) ▪ Sexual Assault ▪ General criminal activity (fraudulent use of credit cards/forges) ▪ Vehicle Thefts & Incidents (series of thefts/vehicle break ins) ▪ Bio terroristic Threat ▪ Missile Threat ▪ Situations Requiring Lockdown and/or Shelter in Place
Sexual Assault	<p>In Nebraska, sexual assault is defined as: Any person who subjects another person to sexual penetration</p> <ul style="list-style-type: none"> ▪ without the consent of the victim ▪ who knew or should have known that the victim was mentally or physically incapable of resisting or appraising the nature of his or her conduct, or ▪ when the actor is nineteen years of age or older and the victim is at least twelve but less than sixteen years of age is guilty of sexual assault in the first degree.
Sexual Contact	<p>Any intentional sexual touching of another, however slight with any object or body part. Sexual touching includes any bodily contact with the breasts, groin, genitals, mouth or other bodily orifice of another individual, or any other bodily contact in a sexual manner.</p>
Sexual Exploitation	<p>Involves taking or attempting to take non-consensual sexual advantage of another person.</p>
Sexual Harassment	<p>Sexual harassment is any unwelcome behavior (verbal, written or physical) that is directed at someone because of the person's sex or gender and that meets one or more of the following conditions:</p> <ul style="list-style-type: none"> ▪ Is sufficiently severe, persistent or pervasive that it unreasonably interferes with, denies or limits someone's ability to participate in or benefit from the College's programs and/or activities by creating a hostile, humiliating, demeaning or sexually offensive, academic, residential, working or social environment; and/or ▪ Is based on real or reasonable perceived power differentials and submission to or rejection of such conduct is believed to carry consequences for the student's education or employment.
Sexual Intercourse	<p>Any sexual penetration (anal, vaginal, or oral), however slight, with any object or body part (e.g. penis, tongue, finger, hand, etc.).</p>

Term	Definition
	Sexual intercourse without consent is sexual assault (rape), even if it is with a friend or acquaintance. Persons who are intoxicated cannot legally consent to sexual intercourse and this may also be considered sexual assault.
Sexual Misconduct	Any behavior of a sexual nature that is non-consensual, committed by force or intimidation or that is otherwise unwelcome
Shelter	<p>Shelter is called when the need for personal protection is necessary, such as in a tornado or hazmat situation.</p> <p><i>Students:</i> use appropriate safety strategy</p> <p><i>Faculty and Staff:</i> use appropriate safety strategy and account for students and occupants</p>
Stalking	Engaging in a course of conduct directed at a specific person that would cause a reasonable person to fear for the person's safety or the safety of others; or suffer substantial emotional distress.
Standard Response Protocol	Also known as the SRP, schools across the country use this standard for communicating and responding to critical incidents. The protocol consists of four actions: Lockout, Lockdown, Evacuate, and Shelter.
Timely Warning	Timely warnings are triggered when an institution determines that a crime for which it must report statistics — such as a homicide, sex offense or robbery — presents a serious or continuing threat to students and employees. Timely warnings must be issued in a manner likely to reach the entire campus community.
Title IX (Title IX of the Education Amendments of 1972)	"No person in the United States shall, on the basis of sex, be excluded from participation in, be denied the benefits of, or be subjected to discrimination under any education program or activity receiving Federal financial assistance."
Tornado Warning	A tornado warning indicates a tornado is imminent and has been indicated by Doppler radar or reported by storm spotters.
Tornado Watch	This is issued by the National Weather Service when conditions are favorable for the development of tornadoes in and close to the watch area. Their size can vary depending on the weather situation. They are usually issued for a duration of 4 to 8 hours. They normally are issued well in advance of the actual occurrence of severe weather. During the watch, people should review tornado safety rules and be prepared to move a place of safety if threatening weather approaches.
Victim Rights and Options	<p>Individuals who have experienced sexual assault, domestic violence, dating violence, or stalking, have the right to.</p> <ul style="list-style-type: none"> • make a report to SCC Safety Personnel, local law enforcement, and/or state police • choose not to report • report the incident to SCC • be protected by SCC from retaliation for reporting and incident • receive assistance and resources from SCC

Appendix A – Safety Personnel

Beatrice

- Toni Landenberger, Assistant Campus Director/Dean of Students, tlandenberger@southeast.edu, 402-228-8286.
- Mark Meints, Safety and Security Coordinator, mmeints@southeast.edu, 402-228-8279
- Allen Allsman, Safety & Security Specialist, AAllsman@southeast.edu, 402 228 8231

All Lincoln Campus Locations (8800 O St., ESQ, CEC/ENT)

- Theresa Webster, Assistant Campus Director/Dean of Students, twebster@southeast.edu, 402-437-2559.
- Sam Loos, Safety and Security Coordinator, sloos@southeast.edu, 402-437-2408.
- Mark Meints, Safety and Security Coordinator, mmeints@southeast.edu, 402-228-8279
- Adam Bales, Public Safety Officer, abales@southeast.edu, 402-437-2072
- Sonia Garcia, Public Safety Officer, CEC/ENT, sgarcia@southeast.edu, 402-437-2506

Milford

- Stacy Riley, Assistant Campus Director/Dean of Students, sriley@southeast.edu, 402-761-8270,
- Mark Meints, Safety and Security Coordinator, mmeints@southeast.edu, 402-228-8279
- Sarah Kroll, Public Safety Officer, skroll@southeast.edu, 402-228-8231

Learning Centers

- Sam Loos, Safety and Security Coordinator, sloos@southeast.edu, 402-437-2408.
- Mark Meints, Safety and Security Coordinator, mmeints@southeast.edu, 402-228-8279

Local Law Enforcement Agencies

- Lancaster County: Sheriffs' Department
- Lincoln-Lancaster County Emergency Management
- Southeast Fire and Rescue.
- The City of Lincoln: Lincoln Police Department and Lincoln Fire and Rescue.
- The City of Beatrice; Beatrice Police Department, Beatrice Fire and Rescue
- Nebraska State Patrol.
- Gage County; Sheriff's Department and Gage County Fire and EMS.
- The City of Milford; Milford Police Department and Milford Fire and Rescue
- Nebraska Emergency Management Agency

Appendix B – Campus Security Authorities (CSAs)

SCC Campus Security Authorities (CSAs)	
Safety and Security Coordinator	Safety and Security Specialists; Public Safety Officers
Vice President Human Resources	Vice President Instruction
Vice President Access, Equity and Diversity	Vice President Student Affairs/Campus Director
Vice President IT/IR/Infrastructure/Campus Director	Vice President Program Development/Campus Director
Beatrice Campus Assistant Campus Director/Dean of Students	Milford Campus Assistant Campus Director/Dean of Students
Lincoln Campus Assistant Campus Director/Dean of Students	Lincoln Campus Associate Dean of Students
Dean of Student Enrollment	Lincoln Campus Associate Deans of Instruction
Dean, Community Services and Extended Learning	Dean, Health Science Division
The Career Academy, Director and Principal	Director, SENCAP
Director of Student Development	Director of TRIO Student Support Services
Director of TRIO Upward Bound	Administrative Director of Advising
Beatrice, Associate Director of Financial Aid	Career Counselor/Advisors
Veteran's Affairs staff	Academic Advisors
Beatrice, Athletic Director	Beatrice, Assistant Coaches
Beatrice, Athletic Trainers	Beatrice and Milford Residence Life Managers
Beatrice and Milford Residence Life Assistant Manager	Beatrice and Milford Resident Assistants
Learning Center Coordinators	Library Resource Center staff
Student Life Coordinators	Club Sponsors
Information Systems Techs	
LPN/ADN Instructors	Medical Assisting Instructors
Social Science Instructors	Surgical Tech Instructors
TRIO Advisors	
Speech Instructor	Publications Specialist
Physical Plant Admin Assistant	Automotive Part Store Manager
ECED Instructors	Diesel Ag Equipment Instructors
Dental Assisting Instructors	Developmental Instructor

Career Services Specialist	Learn to Dream staff
Scholarship/Grant Specialists	Custodians

Advising and Counseling Service

The [Counseling and Assistance Program for Students](#) provides FREE and CONFIDENTIAL counseling for SCC students. To inquire about services, contact:

Kalika Jantzen

Director of Counseling

402-228-8135 ext. 1135

Mobile: 402-413-6375

kjantzen@southeast.edu

Tracy Kerner

Counselor

402-437-2888 ext. 2888

Mobile: 402-937-9559

TKerner@southeast.edu

Appendix C “Reporting Sex Crimes, Sexual Misconduct, Civil Rights Violations and Hate Crimes

- Jose J. Soto, SCC, Vice President Access/Equity/Diversity and Title IX/Equity, jsoto@southeast.edu or 402-323-3412

Reports may also be made to:

Beatrice Campus, Nebraska City and Falls City Learning Centers

- Toni Landenberger, Assistant Campus Director/Dean of Students, tlandenberger@southeast.edu, 402-228-8286
- Mark Meints, Safety and Security Coordinator, mmeints@southeast.edu, 402-228-8279
- Allen Allsman, Safety and Security Specialist, aallsman@southeast.edu, 402-228-8231
- Beatrice Police Department, 402-223-4080
- Gage County Sheriff, 402-223-5221
- Otoe County Sheriff, 402-873-9560
- Richardson County Sheriff, 402-245-2479
- Nebraska State Patrol (Beatrice Campus), 402-471-4545

Lincoln Campus, Plattsmouth and Wahoo Learning Centers

(Including 8800 O Street, Education Square, Continuing Education Center, Entrepreneurship Center)

- Theresa Webster, Assistant Campus Director/Dean of Students, twebster@southeast.edu, 402-437-2559
- Sam Loos, Safety and Security Coordinator, sloos@southeast.edu, 402-437-2408
- Adam Bales, Public Safety Officer, abales@southeast.edu, 402-437-2072
- Sonia Garcia, Public Safety Officer, CEC, sgarcia@southeast.edu, 402-437-2506
- Lincoln Police Department, 402-441-6000
- Lancaster County Sheriff, 402-441-6500
- Cass County Sheriff, 402-296-9370
- Saunders County Sheriff, 402-443-1000

Milford Campus, York and Hebron Learning Centers

- Stacy Riley, Assistant Campus Director/Dean Students, sriley@southeast.edu, 402-4761-8270
- Sarah Kroll, Public Safety Officer, skroll@southeast.edu, 402-228-8231
- Milford Police Department, 402-761-2772
- Seward County Sheriff, 402-643-4578
- York County Sheriff, 402-362-4927
- Thayer County Sheriff, 402-768-6139

Appendix D – Emergency & Non-Emergency Notification Contacts

Emergency Contacts/Responsible Employees

The employees (or designees) responsible for initiating the emergency notification process are listed below.

Beatrice Campus, Nebraska City and Falls City Learning Centers

- Bob Morgan, Campus Director, bmorgan@southeast.edu, 402-228-8272
- Toni Landenberger, Assistant Campus Director/Dean of Students, tlandenberger@southeast.edu, 402-228-8286
- Mark Meints, Safety and Security Coordinator, mmeints@southeast.edu, 402-228-8279
- Allen Allsman, Safety and Security Specialist, aallsman@southeast.edu, 402-228-8231

All Lincoln Campus Locations, Plattsmouth and Wahoo Learning Centers

- Bev Cummins, Campus Director, bcummins@southeast.edu, 402-437-2554
- Theresa Webster, Assistant Campus Director/Dean of Students, twebster@southeast.edu, 402-437-2559
- Sam Loos, Safety and Security Coordinator, sloos@southeast.edu, 402-437-2408
- Mark Meints, Safety and Security Coordinator, mmeints@southeast.edu, 402-228-8279
- Adam Bales, Public Safety Officer, abales@southeast.edu, 402-437-2072
- Sonia Garcia, Public Safety Officer, CEC, sgarcia@southeast.edu, 402-437-2506

Milford Campus, York and Hebron Learning Centers

- Ed Koster, Campus Director, ekoster@southeast.edu, 402-761-8224
- Stacy Riley, Assistant Campus Director/Dean of Students, sriley@southeast.edu, 402-761-8270
- Mark Meints, Safety and Security Coordinator, mmeints@southeast.edu, 402-228-8279
- Sarah Kroll, Public Safety Officer, skroll@southeast.edu, 402-228-8231

Non-Emergency Notification Contacts

- Campus-wide Safety and Security 402-437-2800
- Beatrice Campus 402-228-8221
- Education Square 402-429-0299
- Entrepreneurship Center..... 402-525-4480
- Falls City Learning Center 402-323-3396
- Hebron Learning Center 402-323-5591
- Jack J. Huck Continuing Education Center 402-525-4480
- Lincoln Campus..... 402-437-2570 or 402-440-5853
- Milford Campus 402-761-8253 /8254
- Nebraska City Learning Center..... 402-323-3636
- Plattsmouth Learning Center 402-437-2298
- Wahoo Learning Center 402-323-5581
- York Learning Center..... 402-323-3634

Severe Weather Notification Team

SCC staff who monitor radios and who they will notify in severe weather situations are:

- **Lincoln Campus (8800 “O” St)** - Switchboard Operator notifies Campus Director or Designee
- **Continuing Education Center (CEC)** - 2nd Floor Receptionist notifies the Vice President of Human Resources.
- **Education Square (ESQ)** - Arts and Sciences Office staff notifies the Dean of Arts and Sciences.
- **Beatrice Campus - Campus Switchboard Operator** – during business hours, Custodial staff – during the evening and report to Campus Director or Designee. The Residence Life Manager monitors for the housing areas.
- **Milford Campus - Campus Switchboard Operators** notifies Campus Director or Designee. The Residence Life Manager monitors for the housing areas.
- **Learning Centers** – Each Learning Center has a Coordinator who is the on-site contact for inclement weather decisions and notifications.

Escort to Vehicle

Any student or employee desiring to be escorted to their vehicle or SCC residence hall during the evening hours (6-10 p.m.) should contact:

Beatrice

Safety and Security Specialist..... 402-239-3312

Jack J. Huck Continuing Education Center/SCC Entrepreneurship Center

Custodial Supervisor (Sunday-Thursday)..... 402-239-3312

Education Square

Academic Division - Suite 111 402-323-3441

Custodial Supervisor 402-429-0299

Lincoln

Reception desk (V section) (Monday-Thursday) 402-471-3333

Custodial Supervisor -(Monday- Friday)..... 402-440-5853

Milford

Residence Life Manager 402-761-7398

RA On-Duty 402-761-8463

Appendix E - Notifications Methods

METHOD	DESCRIPTION
SCC Regroup Alert (Text and Email)	Regroup is an automated text messaging service sponsored by SCC. It can also deliver an e-mail message. All students are enrolled in email notifications; however, students and staff must sign up for the text messaging feature through https://southeast.regroup.com/signup
Alertus Desktop Notification	Alertus is a notification system that allows campus security personnel to send a notification that takes over all college computers with important safety information.
Public Address System (PA)	Emergency alerts will be sounded in all main campus buildings through an audible system located in the classrooms and offices and on some campuses, the hallways. These alerts will advise of the situation and how to respond
SCC Home Page (www.southeast.edu)	An alert banner and link to emergency information will appear on the front page of SCC's website.
SCC Intranet/Portal (https://thehub.southeast.edu)	An alert banner and link to emergency information will appear on the front page of The Hub.
Media Outlets	The College will use local media to inform the community of an emergency situation as needed.
Social Media	The College will use Facebook and Twitter to inform followers of an emergency when appropriate.
Campus Main Phone Greetings	When a decision to close an individual Campus is made, the Campus main phone message is changed to reflect the closing. The main phone greeting can also be updated to reflect information about an incident.
NOAA Weather Radios	Provides automatic alerts of weather watches/warnings issued by the National Weather Service.
Emergency 2-way radio transceivers	As part of the Emergency Preparedness Program, Building Emergency Managers are equipped with a hand-held 2-way radio transceiver to communicate during the emergency. Not all locations have Building Emergency Managers. In this case, the Safety and Security Specialist and custodial staff have radios to aid during an emergency.
Emergency Alarm Systems	All buildings have an individual alarm that sounds (fire) along with flashing strobes to signal building evacuation is necessary.
Bullhorns	Manual loudspeaker devices for communicating emergency instructions to large groups.

Appendix F – Safety Management Plan

Section – D Emergency Response Procedures

D-1 Calling 911

All SCC Employees Have the Authority and Responsibility to Call 911 In an Emergency

It is the responsibility of every SCC employee to notify local law enforcement when a criminal act occurs or emergency response personnel are needed.

- It is not necessary to contact a supervisor prior to making an emergency call.
- If an employee believes 911 should be called, don't hesitate.
- It is not necessary for the employee to contact 911 if there was a previous call, or if the situation was resolved by campus administrators.

The College requires employees to call 911 if there are concerns that a person is ill or injured and needs immediate or emergency medical attention.

- If the ill or injured person does not want treatment from emergency personnel, they can refuse the service when the responding emergency team arrives.

911 “Call Pick-Up” Employee Phone

When a 911 call is made from a campus telephone, the call can be monitored by designated staff (a 911 “Call Pick-Up” phone).



EMERGENCY PROCEDURES

MEDICAL EMERGENCY

- Call 911
- Control bleeding
- Administer CPR/AED
- Use appropriate protective equipment

EVACUATION PROCEDURES

Evacuate the building for any fire alarm or when ordered to do so by authorized personnel

- Treat every alarm as a real event
- Use the nearest marked exit
- Crawl or walk UNDER smoke
- Do not use elevators
- Assist any mobility-impaired person
- Move upwind of any air borne threat (face away from the threat, face into the wind)
- Do not look for personal items
- After exiting, move to designated gathering area

FIRE, EXPLOSION, SMOKE

- Pull fire alarm
- Evacuate the area
- Call 911

WEATHER EMERGENCY

- Seek cover
- Lowest level
- Interior wall
- Cover your head

ACTIVE SHOOTER

Run → Hide → Fight

- Stay calm, think, make a plan
- Cooperate fully with law enforcement

GAS LEAK

- Evacuate the area
- Call 911
- Do not smoke
- Do not cause a spark

BOMB THREAT

Ask:

- Where is the bomb?
- What does it look like?
- When will it explode?
- Call 911

SUSPICIOUS PERSON

- Do not approach
- Notify the campus switchboard (*dial "0" from campus phone*)
- Give description, location and direction

SUSPICIOUS ITEM

- Do not touch the item
- Notify the campus switchboard (*dial "0" from campus phone*)
- Clear the area
- Keep people away

SCC Campus Safety & Security

402-437-2800



SCC Safety and Security Coordinator | 1111 O St., Room 100A | Lincoln, Nebraska 68510 | Phone: 402-323-3391

A0171 (03/19)

D-3 Run – Hide – Fight

An Active Shooter or Active Threat is defined as an individual actively attempting to injure or cause harm to people in a confined and populated area with no typical pattern or method to their selection of victims.

VIDEO: Run, Hide, Fight - <https://youtu.be/5VcSwejU2D0>

Run - Evacuate

- Employees are encouraged to evacuate, or flee (if possible) the active threat posed by an armed assailant.
 - If possible, use routes that prevent you from being exposed to unnecessary danger.
 - Evacuate to a location that provides the most protection, cover, or concealment from the intruder.

Hide - Lockout

- If evacuating the area is not a safe option, employees are encouraged to hide in a location that provides concealment and protection from the intruder.
 - Stay calm and remain quiet.
 - Lock all interior doors in your area, if possible.
 - Move away from doors and windows.
 - Turn off the classroom or office area lighting.
 - Turn cell phones to silent or off to limit unnecessary noise.
 - Evacuate to a safer location as soon as it is safely possible.

Fight

- If the intruder poses a lethal threat and the intruder enters the area where you are hiding, and if you feel your life or the life of others is in danger, employees may choose to use physical force to distract, disorient, disarm, or incapacitate the intruder.

Off-Campus Threat: A situation off-campus that does not pose an immediate threat.

An announcement will be made through the Campus Emergency Notification System alerting students and staff of the off-campus threat. Students and staff should continue with their normal classroom and office activities until further instructions are given.

In the event of a known or perceived off-campus threat in close proximity to the campus, campus administrators will make every effort to "Lockdown" the campus, to prevent the threat from accessing the campus buildings.

D-4 Campus Emergency Notification

During an emergency or in the presence of an imminent threat to any SCC Campus, the Campus Emergency Notification System will be used to announce to employees, students, and visitors the existence of an emergency or threat and provide instructions, directions, and response. Mass communication alerts will be issued by a responsible administrator.

Southeast Community College uses **FOUR** emergency notification systems initiated by an administrator:

1. Emergency Telephone Broadcast Speaker System – Campus Paging System

- a. This system allows campus officials to notify SCC employees of an emergency through designated Campus telephone intercom systems.
- b. This system was designed to provide employees with information and response instructions to a given emergency.

2. Overhead Broadcast Notification System – Camps Public Address System

- a. This system allows campus officials to notify SCC employees of an emergency through an overhead speaker or Public Announcement – Public Broadcast system.
- b. This system provides broad area notification of emergencies using the designated emergency tones, such as: sirens, bells, etc.

3. SCC Emergency Messaging System – REGROUP



- a. This system delivers email and /or text messages to the faculty, staff, and students during emergencies.
- b. These messages may be used in addition to the other methods of communications i.e. TV, radio, SCC website, etc.
- c. To set up or initiate access to the Regroup system visit "The Hub" - <https://thehub.southeast.edu>

4. ALERTUS Desktop Notification System

- a. Alertus Desktop Notification grabs the attention of all computer users on the SCC Network.
- b. When an emergency occurs and the warning is activated, a screen alert will appear on all computers being used on the network. The alert will override sleeping computers, waking them to display the notification.

Severe Weather Alerts

- **WARNINGS** – severe weather warnings are automatically initiated by the National Weather Service through Regroup. The list of automatic warnings is approved by the Administrative Team.
- Weather status is a cooperative effort involving the Campus Directors, Assistant Campus Directors, Safety & Security Staff and the Physical Plant Superintendents. The decision to dispatch a Weather Alert Notification through Regroup is per the approval of the Campus Director or Assistant Campus Director.
- Severe Weather “ALL CLEAR” When the threat of severe weather or tornado has ended, campus administrators will use the Campus Emergency Notification System(S) to issue an “ALL CLEAR” advising the tornado warning has expired. Notification to occupants of Resident Halls will be disseminated through the Resident Hall Manager, Assistant Manager or designee.

D-5 Emergency Evacuation Procedures

General Procedures

- Treat every alarm, siren, or official announcement as a real event.
- Authorized personnel are Fire and Rescue personnel, Law Enforcement personnel, or campus administrators.
- If you hear an alarm or you are directed to evacuate any campus facility, building, or work area:
 - Move quickly to the nearest exit.
 - Do Not Run.
- If an exit is blocked, move quickly to an alternate exit close to your location.
- If smoke is present in your evacuation route, use an alternate way out. However, if the only available escape route requires you to pass through smoke, get low and go under the smoke.
- Move away from the building and to the designated emergency gathering area; always move upwind (or away) from any fire, smoke, leak, or spill.
- The emergency gathering area should be:
 - A safe distance from the hazard source.
 - Upwind from the hazard source.
 - Located behind protective cover to shelter from hazards or flying debris.
- The emergency gathering area is a safe location for students and employees to congregate pending the resolution of the emergency and established by campus administrators or emergency personnel based on managing the needs of the situation or emergency.
- Do not use elevators, even if the elevator seems to be working properly.
- If time permits and it is safe, take your personal belongings (keys, wallets, etc.) with you, but do not waste time searching for missing items.

- Secure any hazardous materials or equipment before leaving the area, if time permits.
- Assist moving any mobility impaired person to a safe location. If you are unable to assist, notify emergency responders of the location and number of persons needing assistance located in your area. Some campuses or locations provide approved lift chairs for safe evacuation of persons from buildings with multiple levels. Only trained responders are authorized to use the lift chairs.
- Do not return to the building unless you are told to do so by the Campus Director, designee or authorized emergency personnel.

In the event of an emergency when a facility or building evacuation has taken place, do not leave the campus unless you are authorized or approved. Accountability rosters will be completed to account for all employees, students and visitors.

Appendix G – Alcohol and Drug Education, Assistance, and Resources

Alcohol and Drug Education and Assistance

- Employee Assistance Program through Continuum EAP is available at no cost to full-time SCC employees. Counseling assistance is available via face-to-face meetings, telephone, and email. All Continuum assistance is confidential. In addition to alcohol and drug use, Continuum provides assistance in other areas such as anxiety or depression, change, conflict, depression, anxiety, financial/legal challenges, grief, marital/family difficulties, and stress. Employees may obtain information about the EAP through the Human Resource Office, and/ or contacting them directly at 402-476-0186 or <https://www.4continuum.com/>
- The [Counseling Assistance Program \(CAPS\)](#) provides students with access counseling free of charge. The CAPS program is allowed for students actively enrolled in any SCC class with no minimum number of credit hours. A referral to counseling does not ensure that a student will agree to counseling. SCC will make no demands of students that they receive counseling. It is voluntary and may be discontinued at will by students.
- Assistance for students is provided via referral to community resources. Information can be obtained by contacting the campus Dean of Students or the Nebraska 211 Office at www.ne211.org.
- College Behavior Profile which administers screening, brief intervention, and referral to treatment (SBIRT) to college students is available free to all students. Programming was implemented in the 2019/20 school term. This tool allows measurement of student consumption, provides education related to drugs and alcohol and measures student use.
- New students are required to complete the Year One college Behavioral Profile during the first semester of their college experience.
- New students are provided information about the Drug-Free Schools and Communities Act, Student Code of Conduct and sanctions during new student orientation and via the college catalog.
- All events and activities hosted by Student Life and Residence Life are alcohol free. The events and their success are measured by the College AIM, National College Alcohol Intervention Matrix. Activities and events are established to reduce harm and over-consumption of alcohol. [Planning Alcohol Interventions Using NIAAA's College AIM \(collegedrinkingprevention.gov\)](#)

- Posters annually displayed in designated areas around campuses that promote awareness of local and campus resources and increase awareness of the risks associated with drug and alcohol consumption
- Residence Hall and Student Handbooks contain information about policies, protocol, legal statutes, and community referral information.
- Annual Safety and Security Reports are made available online and on each campus.
- SCC either hosts or makes information available about Alcoholics Anonymous meetings that are open to all employees and students in recovery or seeking help. For further information, contact the campus office or Dean of Students. Community agencies are available to assist employees and students seeking alcohol and drug counseling and treatment. College departments including Campus Deans of Students, Counseling Assistance professionals, and Human Resources, will provide referrals to students and employees seeking assistance, education and prevention strategies regarding drug and alcohol abuse. In addition to these, many area hospitals and community agencies are available to provide drug and alcohol treatment and rehabilitation.