

# NEBRASKA



Good Life. Great Mission.

---

**DEPT. OF HEALTH AND HUMAN SERVICES**

Division of Medicaid & Long-Term Care

Nebraska Medicaid Expansion Report  
January 2021

February 28, 2021

Prepared in Accordance with LB 294 (2019)

# NEBRASKA

Good Life. Great Mission.

DEPT. OF HEALTH AND HUMAN SERVICES



Pete Ricketts, Governor

February 28, 2021

Clerk of the Legislature  
Legislative Fiscal Office  
P.O. Box 94604  
Lincoln, NE 68509

Dear Clerk of the Legislature and Legislative Fiscal Office:

In accordance with LB 294 (2019) please find attached a report on Medicaid Expansion Administrative and Aid policy decisions for the calendar month of January 2021.

If you have any questions, please contact the Medicaid program at [Kevin.Bagley@Nebraska.gov](mailto:Kevin.Bagley@Nebraska.gov).

Sincerely,

A handwritten signature in black ink, appearing to read "Kevin Bagley".

Kevin Bagley, Director  
Division of Medicaid and Long-Term Care  
Department of Health and Human Services

Attachments: 2

## Medicaid Expansion Programs 249 (Administration) & 349 (Aid)

The Department of Health and Human Services, Division of Medicaid and Long-Term Care (MLTC), provides the following update regarding Medicaid Expansion Administrative and Aid policy decisions for the calendar month of January 2021:

Expansion was launched successfully on October 1, 2020. With benefits through Medicaid expansion now available, many details of the program have been finalized and will not require additional updates in this report unless changes occur. Details on enrollment for the month of January are below:

<b>Medicaid Expansion - Eligibility Determinations (as of 2/1/21)</b>		
	<b>January 2021</b>	<b>Cumulative</b>
Basic <sup>1</sup>	3,845	24,764
Prime <sup>2</sup>	(673)	7,126
Medically Frail	688	3,192
Pregnant Women	26	68
19-20 Year Olds	488	3,855
COVID PHE Prime <sup>3</sup>	(1,875)	11
<b>TOTAL:</b>	<b>3,172</b>	<b>31,888</b>

In January, DHHS Eligibility Operations continued to improve its training processes and materials for staff working with the Medicaid expansion population. This included work on new and existing process guides, online training modules, and training schedules.

On January 15, 2021, MLTC submitted the final HHA Demonstration Year 1 Implementation Plan (IP) for the 1115 waiver to the federal government for review and approval. This IP details the demonstration requirements of Wellness Initiatives and Personal Responsibility Activities as well as major communication deliverables for both demonstration participants and our MLTC

---

<sup>1</sup> Basic benefits include physical health, behavioral health, and prescription drug coverage.

<sup>2</sup> Prime benefits include all Basic benefits, plus dental, vision, and over-the-counter medication coverage.

<sup>3</sup> This category refers to people who would typically qualify for Basic benefits, but federal requirements around the COVID-19 Public Health Emergency (PHE) declaration required DHHS to place them temporarily in the Prime benefits tier. In January they were moved into the Basic benefit tier.

partners. It also details the system updates for implementing the first year of the Demonstration program. Updates on the HHA Demonstration Program will be shared as they become available.

The DHHS Information Systems & Technology (IS&T) team had a successful January interim release for N-FOCUS and OnBase systems. MMIS team completed their coding and unit testing activities and began system testing for Phase 2A of Heritage Health Adult, which includes the first parts of the Demonstration program. IS&T team has also kick-started design activities for Phase2B design of the HHA project.

For the latest project schedule, please refer to the attached timeline.

For the latest program expenditures, please refer to the attached Expansion Aid table.

<b>Program 349 Expansion Aid SFY 20-21</b>		
	<b>Appropriations</b>	<b>Expenditures</b>
GF	43,863,305	7,946,346
FF est.	373,260,870	67,452,385
Total	417,124,175	75,398,731

Heritage Health Adult Phase II Implementation Plan Timeline  
1/31/21

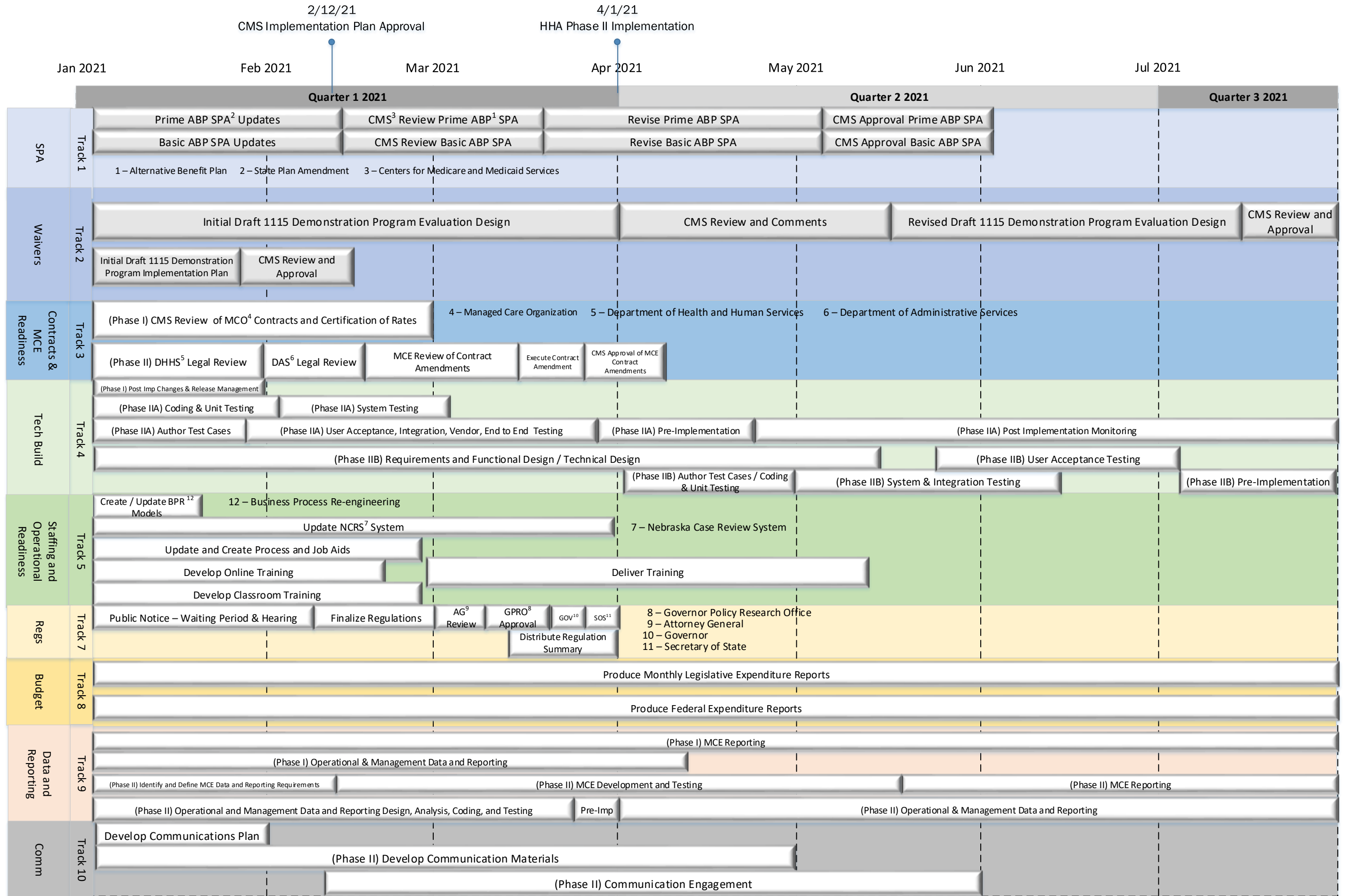


Figure 1: HHA Phase II Implementation Timeline