

# NEBRASKA



Good Life. Great Mission.

---

**DEPT. OF HEALTH AND HUMAN SERVICES**

Division of Medicaid & Long-Term Care

Nebraska Medicaid Expansion Report  
April 2021

May 18, 2021

Prepared in Accordance with LB294 (2019)

# NEBRASKA

Good Life. Great Mission.

DEPT. OF HEALTH AND HUMAN SERVICES



Pete Ricketts, Governor

May 18, 2021

Clerk of the Legislature  
Legislative Fiscal Office  
P.O. Box 94604  
Lincoln, NE 68509

Dear Clerk of the Legislature and Legislative Fiscal Office:

In accordance with LB294 (2019) please find attached a report on Medicaid Expansion Administrative and Aid policy decisions for the calendar month of April 2021.

If you have any questions, please contact me at [Kevin.Bagley@Nebraska.gov](mailto:Kevin.Bagley@Nebraska.gov).

Sincerely,

A handwritten signature in black ink, appearing to read "Kevin Bagley".

Kevin Bagley, Director  
Division of Medicaid and Long-Term Care  
Department of Health and Human Services

Attachments: 2

## Medicaid Expansion Programs 249 (Administration) & 349 (Aid)

The Department of Health and Human Services, Division of Medicaid and Long-Term Care (MLTC), provides the following update regarding Medicaid Expansion Administrative and Aid policy decisions for the calendar month of April 2021:

Expansion was launched successfully on October 1, 2020. With benefits through Medicaid expansion now available, many details of the program have been finalized and will not require additional updates in this report unless changes occur. Details on enrollment for the month of April are below:

<b>Medicaid Expansion - Eligibility Determinations (as of 5/1/21)</b>		
	<b>April 2021</b>	<b>Cumulative</b>
Basic <sup>1</sup>	1,793	31,163
Prime <sup>2</sup>	1,018	10,477
Medically Frail	603	5,111
Pregnant Women	39	170
19-20 Year Olds	376	5,196
<b>TOTAL:</b>	<b>2,811</b>	<b>41,640</b>

The implementation of the Heritage Health Adult Demonstration Program continues to be on hold as the state works with the new administration. This program would allow everyone currently receiving Basic benefits to complete wellness and personal responsibility activities in order to qualify for Prime benefits.

For the latest program expenditures, please refer to the attached Expansion Aid table.

<b>Program 349 Expansion Aid SFY 20-21</b>		
	<b>Appropriations</b>	<b>Expenditures</b>
GF	\$43,863,305	\$18,084,324
FF est.	\$373,260,870	\$155,621,933
<b>Total</b>	<b>\$417,124,175</b>	<b>\$173,706,258</b>

The attached project timeline is reflective of the project's status prior to the project's pause described above.

<sup>1</sup> Basic benefits include physical health, behavioral health, and prescription drug coverage.

<sup>2</sup> Prime benefits include all Basic benefits, plus dental, vision, and over-the-counter medication coverage.

Heritage Health Adult Phase 2 Implementation Plan Timeline  
2/28/21

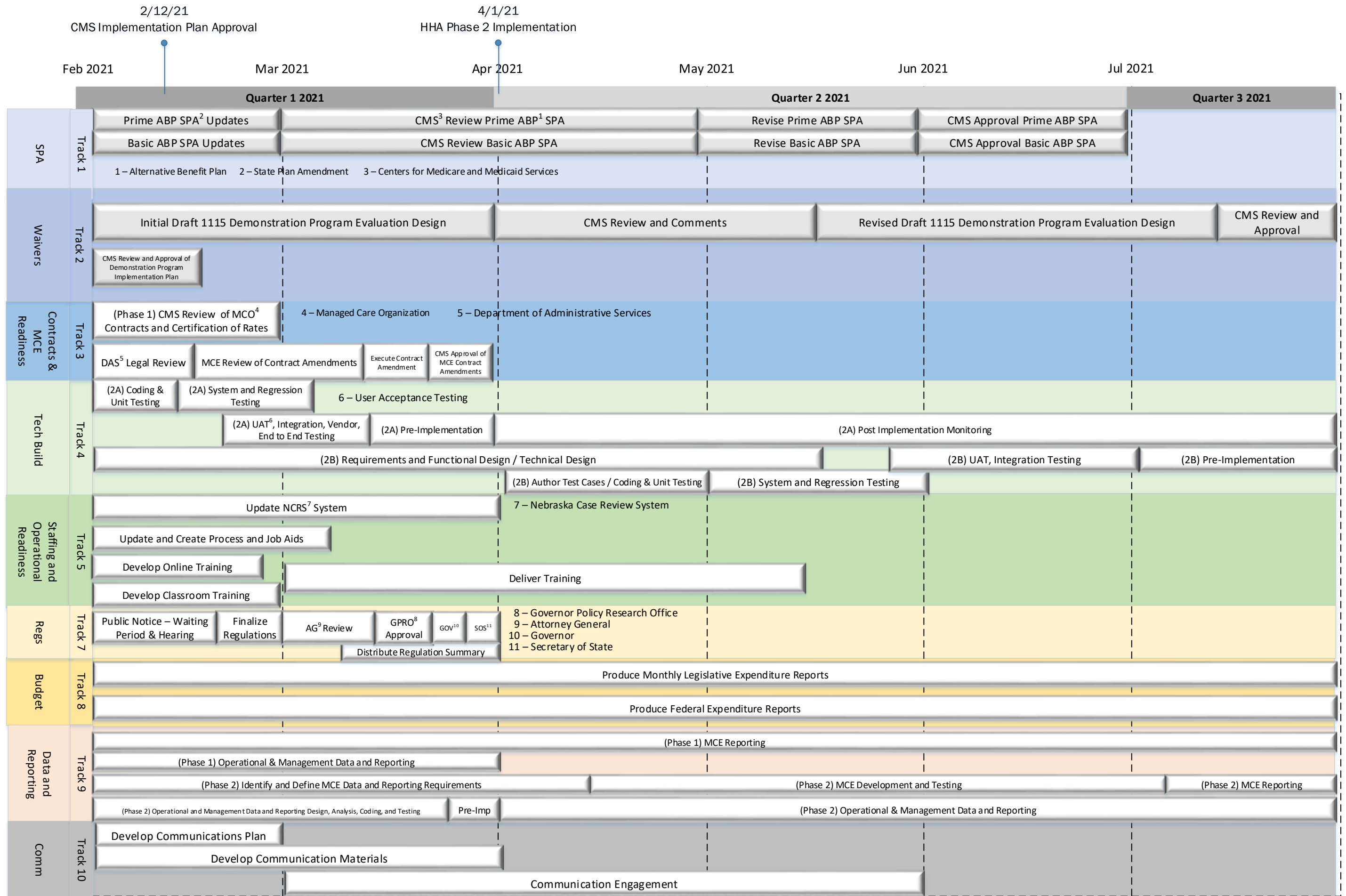


Figure 1: HHA Phase 2 Implementation Timeline