

NEBRASKA



Good Life. Great Mission.

DEPT. OF HEALTH AND HUMAN SERVICES

Division of Medicaid & Long-Term Care

Nebraska Medicaid Expansion Report
March 2021

April 30, 2021

Prepared in Accordance with LB 294 (2019)

NEBRASKA

Good Life. Great Mission.

DEPT. OF HEALTH AND HUMAN SERVICES



Pete Ricketts, Governor

April 30, 2021

Clerk of the Legislature
Legislative Fiscal Office
P.O. Box 94604
Lincoln, NE 68509

Dear Clerk of the Legislature and Legislative Fiscal Office:

In accordance with LB 294 (2019) please find attached a report on Medicaid Expansion Administrative and Aid policy decisions for the calendar month of March 2021.

If you have any questions, please contact the Medicaid program at Kevin.Bagley@Nebraska.gov.

Sincerely,

A handwritten signature in black ink, appearing to read "Kevin Bagley".

Kevin Bagley, Director
Division of Medicaid and Long-Term Care
Department of Health and Human Services

Attachments: 2

Medicaid Expansion Programs 249 (Administration) & 349 (Aid)

The Department of Health and Human Services, Division of Medicaid and Long-Term Care (MLTC), provides the following update regarding Medicaid Expansion Administrative and Aid policy decisions for the calendar month of March 2021:

Expansion was launched successfully on October 1, 2020. With benefits through Medicaid expansion now available, many details of the program have been finalized and will not require additional updates in this report unless changes occur. Details on enrollment for the month of March are below:

Medicaid Expansion - Eligibility Determinations (as of 4/1/21)		
	March 2021	Cumulative
Basic ¹	2,406	29,365
Prime ²	1,217	9,459
Medically Frail	685	4,508
Pregnant Women	29	131
19-20 Year Olds	505	4,820
TOTAL:	3,623	38,824

The implementation of the Heritage Health Adult Demonstration Program is still pending confirmation from the federal government. This program would allow everyone currently receiving basic benefits to complete wellness and personal responsibility activities in order to qualify for Prime benefits.

For the latest program expenditures, please refer to the attached Expansion Aid table.

Program 349 Expansion Aid SFY 20-21		
	Appropriations	Expenditures
GF	\$43,863,305	\$14,139,997
FF est.	\$373,260,870	\$124,181,344
Total	\$417,124,175	\$138,321,342

The attached project timeline is reflective of the project's status prior to the project's pause described above.

¹ Basic benefits include physical health, behavioral health, and prescription drug coverage.

² Prime benefits include all Basic benefits, plus dental, vision, and over-the-counter medication coverage.

Heritage Health Adult Phase 2 Implementation Plan Timeline
2/28/21

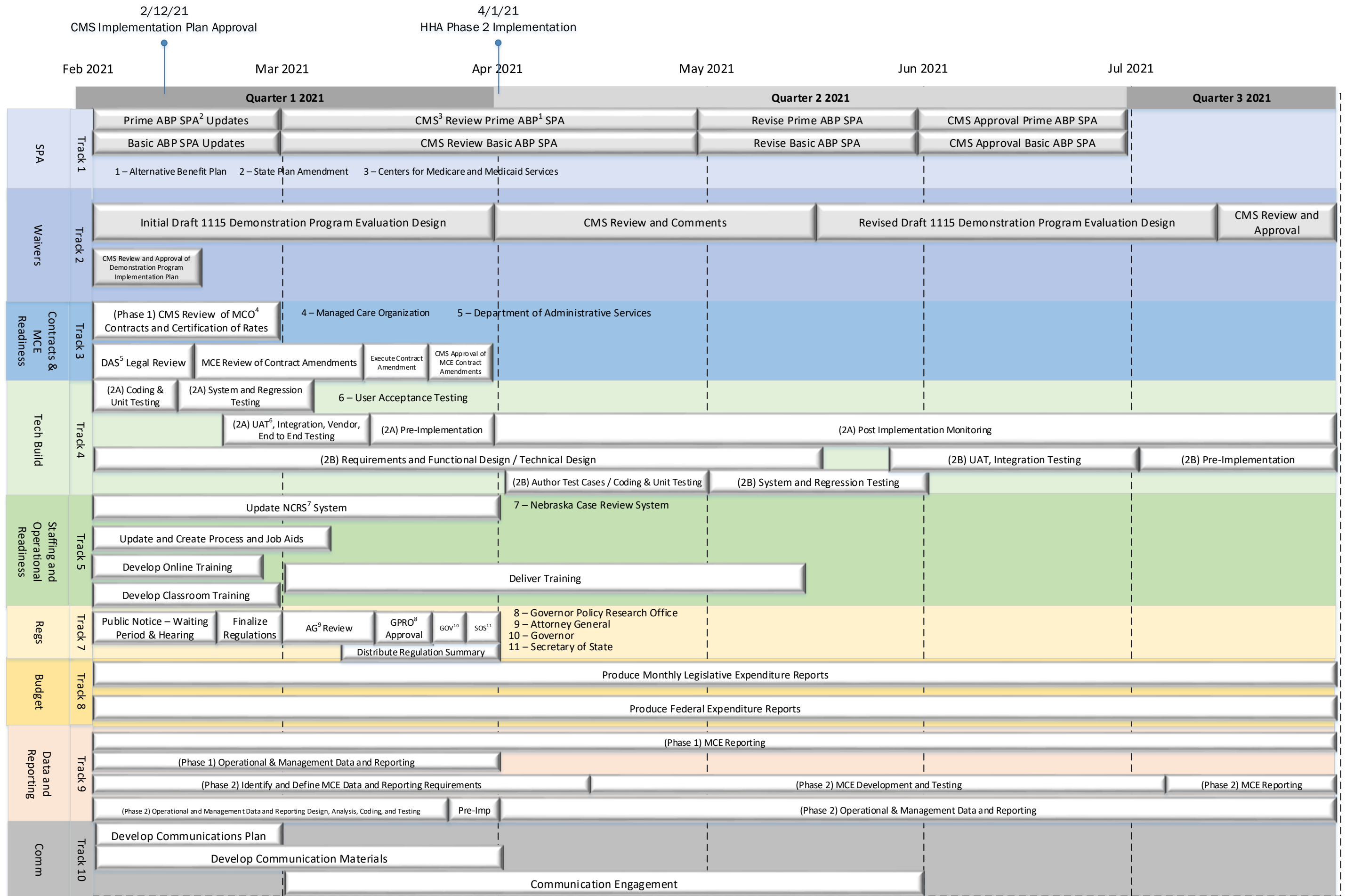


Figure 1: HHA Phase 2 Implementation Timeline