

April 30, 2015

Patrick O'Donnell, Clerk of the Legislature
State Capitol, Room 2018
P.O. Box 94604
Lincoln, NE 68509-4604

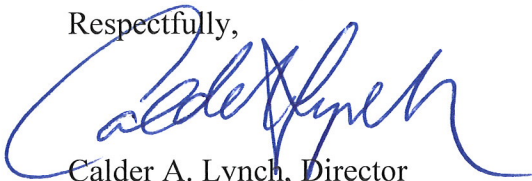
RE: ACCESSNebraska Quarterly Report

Dear Mr. O'Donnell,

In accordance with Legislative Bill 195 (2013) ACCESSNebraska Quarterly Reports, I have attached a copy of the most recent quarter from the Division of Medicaid and Long-Term Care. We are pleased to report improvement from the previous quarter.

The attached report covers the quarter from January through March 2015.

Respectfully,



Calder A. Lynch, Director
Division of Medicaid and Long-Term Care
Department of Health and Human Services

Attachment

**Department of Health and Human Services
Legislative Report
LB 195**

**ACCESSNebraska
Medicaid**

January – March 2015 Quarter

REPORT FOR: LEGISLATURE
REPORT DATE: APRIL 30, 2015
LEGISLATIVE BILL: LB 195
COMMITTEE NAME: HEALTH AND HUMAN SERVICES COMMITTEE
CONTACT PERSON: CALDER LYNCH, DIRECTOR
MEDICAID AND LONG-TERM CARE DIVISION

Element Two: Number of days in increments that it takes to process applications for Medicaid and Children's Health Insurance Program, separating the data for applicants not applying on the basis of disability from applicants applying on the basis of disability, overall and broken down by county.

See attached:

- Application Processing Medicaid for Children and Families
- Application Processing Medicaid for Aged and Disabled
- Application Processing Children's Health Insurance Program

Element Three: Reasons for benefit applications processing delays (department, client or third party) for all applications that are processed beyond federal and state timeliness in Aid to Dependent Children, Supplemental Nutrition Assistance Program, Aid to Aged, Blind and Disabled, Medicaid and Children's Health Insurance Program statewide, and Child Care Subsidy program, overall and broken down by county. This shall include the number of cases for each respective reason (department, client and third party).

See attached:

- Application Processing Delays MLTC Programs

Element Four: The number of case closures in Medicaid, Children's Health Insurance Program, Aid to Dependent Children, Supplemental Nutrition Assistance Program, Aid to Aged Blind and Disabled, and Child Care subsidy program, and the reason for the closure statewide and overall and broken down by county.

See attached:

- Cases Closed by County Reason

Element Five: The number of case closures due to failure to recertify benefits, including timely provide information, failing to perform a case review or failing to appear for an appointment, overall and broken down by county.

See attached:

- Cases Closed by County Reason

Element Six: Total number of first time applicants for benefits categorized by state and county and by month.

See attached:

- January Applications
- February Applications
- March Applications

Element Seven: The percentage of applications that are re-applications, categorized by state and county and by month.

See attached:

- January Applications
- February Applications
- March Applications

Element Eight: The percentage of individuals whose cases closed and then reapply for benefits within thirty days and sixty days after case closure, categorized by state and county, and by month.

Medicaid Programs are included in this report.

See attached:

- January percentage of people who had case closed who reapplied within 30 and 60 days
- February percentage of people who had case closed who reapplied within 30 and 60 days
- March percentage of people who had case closed who reapplied within 30 and 60 days

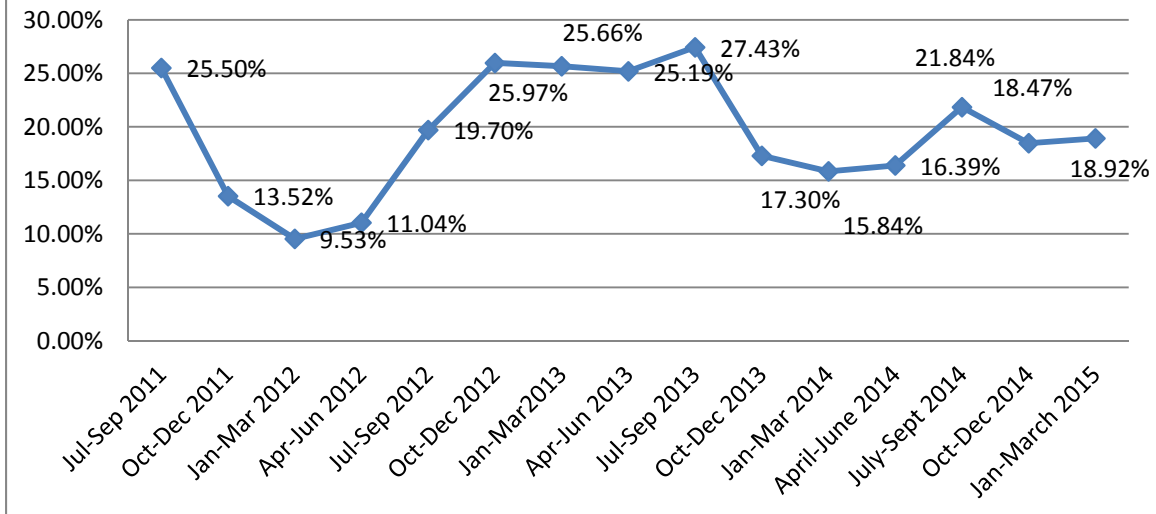
Element Nine: Average wait time for call center response. The average wait time starting from the time when the call is transferred to the customer service center to the time when the worker answers the call.

Average Call Wait				
	January	February	March	Quarter
Medicaid	3:55	4:06	3:58	3:59

Element Ten: The number of client call terminations (client hang ups) that occur prior to speaking with a staff member and the average length of time starting from the time when the call is transferred to the customer service center to the time when the caller terminates the call.

Call Terminations				
Medicaid	January	February	March	Quarter
Abandonment Rate	9.76%	10.35%	9.82%	9.96%
Number of Abandons	3474	3287	3457	10,218
Average Time to Abandon	3:11	3:33	3:17	3:20

ACCESSNebraska Call Abandonment Rate By Quarter--All Programs



Element Eleven: average number of minutes per delivery system transaction or task based on type of transaction, including but not limited to, application management (new, review, renewal), interviewing (high and low priority), application processing, and change management.

Data regarding the number of minutes per delivery to process a task is not available. A report reflecting the number of days to complete a work task in the Medicaid Program is attached.

See attached:

- January 2015 through March 2015 Work Task Report

Element Twelve: The number of hours and the number of days when call center responses are at a maximum and clients receive a busy signal when calling.

The Office of the Chief Information Officer (OCIO) sends busy signal reports to the Medicaid Division of DHHS. The report reflects the date, time and location when a busy signal occurred. Windstream submits the Lincoln local number and the State-wide toll free number report. Century Link submits the Omaha local number report. Medicaid has 46 lines available in each location.

A review of the January – March reports indicate busy signals occurred on six days during the last quarter. The Omaha local number experienced busy signals on January 5th during the time period of 11:00 am - 1:00 pm and 2:00 pm - 4:00 pm and on February 1st during the time period of 12:00 pm - 1:00 pm. The Lincoln local and State-wide toll free number experienced busy signals on January 5th during the time period of 10:30 - 11:00 am and 1:30pm - 2:30 pm, January 6th during the time period of 12:30 pm - 1:00 pm, January 12th during the time period of 1:30 pm - 2:30 pm and again at 4 pm, January 20th during the time period of 12:00 pm - 12:30 pm and January 26th during the time period of 10:30 am - 11:00 am.

Element Thirteen: It is the intent of the Legislature that the department submits a report to the Clerk of the Legislature that includes the following monthly information on a quarterly basis of the workers in the ACCESSNebraska call centers and in local offices. The number of social service workers, eligibility technicians and social service lead workers and the number of vacancies are in these positions at the beginning of each month; the number of these positions vacated within a month; and the number of these positions filled within a month.

See attached:

- Human Resources 1st Quarter 2015

MEDICAID for Children and Families

	October 2014						November 2014						December 2014						January 2015	
	00-05 Days	06-30 Days	31-45 Days	46-60 Days	Over 60	Mnthly Total	00-05 Days	06-30 Days	31-45 Days	46-60 Days	Over 60	Mnthly Total	00-05 Days	06-30 Days	31-45 Days	46-60 Days	Over 60	Mnthly Total	00-05 Days	06-30 Days
Adams	15	25	7	0	1	48	26	18	2	2	2	50	14	43	9	3	8	77	9	49
Antelope	1	7	2	0	0	10	3	4	0	2	0	9	1	10	0	0	3	14	1	3
Arthur	0	0	0	0	0	0	1	0	0	0	0	1	0	0	0	0	0	0	1	1
Banner	0	2	0	0	0	2	0	0	0	0	0	0	1	0	0	0	0	1	0	1
Blaine	0	0	0	0	0	0	0	0	0	0	0	0	0	1	0	0	0	1	1	1
Boone	0	0	1	0	1	2	1	4	1	0	0	6	0	8	2	0	0	10	1	5
Box Butte	6	11	0	1	3	21	13	9	0	0	1	23	3	11	1	0	1	16	1	18
Boyd	0	1	0	0	1	2	0	2	0	0	0	2	0	1	0	0	0	1	0	1
Brown	2	1	0	0	0	3	1	3	0	0	1	5	2	2	0	0	1	5	1	5
Buffalo	11	41	8	3	2	65	25	24	3	3	4	59	14	35	9	5	3	66	15	44
Burt	3	9	1	0	1	14	1	1	2	0	0	4	3	9	1	0	2	15	3	3
Butler	2	7	0	0	2	11	4	3	1	0	1	9	3	10	2	1	1	17	2	3
Cass	4	19	4	1	0	28	8	11	1	1	0	21	4	21	4	2	3	34	2	30
Cedar	1	3	1	0	0	5	3	3	1	0	1	8	1	7	0	3	0	11	1	5
Chase	0	2	1	0	0	3	3	1	2	0	0	6	1	5	1	0	1	8	0	4
Cherry	1	7	0	2	2	12	3	4	0	0	1	8	0	5	1	0	0	6	1	7
Cheyenne	6	8	2	1	1	18	2	6	1	0	1	10	4	7	0	1	4	16	1	10
Clay	2	5	2	0	0	9	9	6	0	1	0	16	3	10	0	0	0	13	1	7
Colfax	2	12	3	1	1	19	4	8	2	1	0	15	2	13	3	1	2	21	3	10
Cuming	0	7	0	0	0	7	4	5	0	0	0	9	3	11	0	0	0	14	0	5
Custer	0	12	2	0	1	15	4	4	0	0	1	9	1	10	5	2	0	18	1	22

January 2015				February 2015					March 2015				County Total
31-45 Days	46-60 Days	Over 60	Mnthly Total	00-05 Days	06-30 Days	31-45 Days	46-60 Days	Mnthly Total	00-05 Days	06-30 Days	31-45 Days	Mnthly Total	
6	1	3	68	7	35	5	0	47	17	17	0	34	324
1	0	0	5	1	1	2	1	5	1	2	0	3	46
0	0	0	2	0	1	0	1	2	0	0	0	0	5
0	0	0	1	0	1	0	0	1	0	0	0	0	5
0	0	0	2	0	0	0	0	0	0	0	0	0	3
2	1	0	9	0	2	0	0	2	1	0	0	1	30
3	0	1	23	2	7	1	1	11	6	5	0	11	105
0	0	0	1	1	3	1	0	5	1	2	0	3	14
1	0	0	7	0	2	0	0	2	0	1	0	1	23
14	3	1	77	11	51	2	1	65	9	31	0	40	372
1	0	0	7	0	8	2	0	10	1	1	0	2	52
0	0	0	5	0	4	2	0	6	1	0	0	1	49
3	1	1	37	1	27	4	0	32	8	6	0	14	166
0	1	0	7	2	5	0	0	7	2	2	0	4	42
2	1	0	7	0	6	0	0	6	0	0	0	0	30
0	0	1	9	1	11	0	0	12	2	2	0	4	51
0	1	2	14	1	9	0	0	10	5	3	0	8	76
3	1	0	12	0	7	3	0	10	3	2	0	5	65
2	3	0	18	3	14	3	0	20	5	9	0	14	107
2	0	0	7	0	8	0	0	8	1	2	0	3	48
1	0	0	24	1	15	2	0	18	5	2	0	7	91

MEDICAID for Children and Families

	October 2014						November 2014						December 2014						January 2015	
	00-05 Days	06-30 Days	31-45 Days	46-60 Days	Over 60	Mnthly Total	00-05 Days	06-30 Days	31-45 Days	46-60 Days	Over 60	Mnthly Total	00-05 Days	06-30 Days	31-45 Days	46-60 Days	Over 60	Mnthly Total	00-05 Days	06-30 Days
Dakota	11	44	4	2	1	62	18	22	3	2	0	45	15	31	9	7	0	62	6	46
Dawes	0	10	0	0	0	10	7	5	0	0	0	12	2	10	3	0	0	15	0	12
Dawson	13	48	3	2	1	67	12	19	4	1	2	38	10	20	12	2	4	48	6	41
Deuel	1	2	1	1	0	5	0	1	0	0	0	1	1	1	0	1	0	3	2	3
Dixon	0	1	0	0	0	1	0	2	0	0	0	2	0	6	1	0	1	8	1	4
Dodge	19	57	2	5	3	86	17	23	8	1	5	54	20	45	13	5	6	89	8	47
Douglas	220	624	68	16	29	957	339	347	59	25	38	808	197	652	146	55	47	1,097	136	678
Dundy	1	1	0	0	0	2	0	0	0	0	1	1	0	3	1	0	1	5	0	1
Fillmore	2	6	1	0	0	9	1	4	0	0	1	6	2	4	2	0	0	8	1	5
Franklin	0	4	0	0	0	4	3	2	0	0	1	6	2	5	0	0	0	7	0	3
Frontier	0	2	0	0	0	2	0	0	0	0	0	0	0	0	0	0	0	0	0	3
Furnas	4	8	1	0	0	13	2	1	1	0	0	4	0	7	2	0	1	10	2	8
Gage	12	15	3	0	1	31	7	11	4	2	1	25	5	21	6	3	1	36	3	23
Garden	1	4	0	0	0	5	1	2	0	0	0	3	1	3	3	2	0	9	0	0
Garfield	1	1	0	0	0	2	0	1	0	0	1	2	0	2	2	0	0	4	0	2
Gosper	0	0	0	0	0	0	1	2	0	2	0	5	0	1	1	0	0	2	0	1
Grant	0	0	0	0	0	0	0	1	0	0	0	1	1	0	0	0	0	1	1	0
Greeley	1	1	0	0	0	2	0	1	0	0	0	1	1	5	0	0	0	6	0	3
Hall	34	91	9	0	0	134	39	47	8	4	4	102	20	68	18	8	5	119	20	74
Hamilton	1	9	2	0	0	12	5	6	1	1	0	13	3	5	0	0	2	10	3	7
Harlan	3	1	1	0	0	5	3	1	0	0	0	4	2	2	0	0	0	4	0	1

January 2015				February 2015					March 2015				County Total
31-45 Days	46-60 Days	Over 60	Mnthly Total	00-05 Days	06-30 Days	31-45 Days	46-60 Days	Mnthly Total	00-05 Days	06-30 Days	31-45 Days	Mnthly Total	
11	0	1	64	6	36	4	1	47	10	22	0	32	312
4	1	1	18	0	11	0	0	11	1	4	0	5	71
3	4	0	54	8	42	7	1	58	2	17	0	19	284
0	0	0	5	0	2	2	0	4	1	3	0	4	22
0	0	0	5	0	7	0	1	8	0	2	0	2	26
12	3	1	71	6	40	8	2	56	8	20	0	28	384
96	30	12	952	114	553	78	13	758	254	320	0	574	5,146
2	0	0	3	0	1	0	0	1	0	3	0	3	15
1	0	1	8	0	6	0	0	6	0	2	0	2	39
0	0	0	3	0	2	1	0	3	1	0	0	1	24
1	0	0	4	0	3	0	0	3	1	1	0	2	11
1	2	0	13	1	8	0	0	9	1	3	0	4	53
2	0	2	30	6	21	4	0	31	6	7	0	13	166
1	0	1	2	1	3	1	0	5	1	2	0	3	27
0	0	0	2	0	3	0	0	3	1	1	0	2	15
0	0	0	1	1	1	0	0	2	0	2	0	2	12
0	0	0	1	0	3	0	0	3	0	0	0	0	6
0	0	0	3	0	1	2	0	3	2	1	0	3	18
14	9	1	118	13	88	12	1	114	45	32	0	77	664
0	0	1	11	1	9	0	0	10	5	0	0	5	61
0	0	0	1	0	2	1	0	3	0	0	0	0	17

MEDICAID for Children and Families

	October 2014						November 2014						December 2014						January 2015	
	00-05 Days	06-30 Days	31-45 Days	46-60 Days	Over 60	Mnthly Total	00-05 Days	06-30 Days	31-45 Days	46-60 Days	Over 60	Mnthly Total	00-05 Days	06-30 Days	31-45 Days	46-60 Days	Over 60	Mnthly Total	00-05 Days	06-30 Days
Hayes	0	2	0	0	0	2	0	0	0	0	0	0	1	2	0	0	0	3	0	3
Hitchcock	0	2	0	0	0	2	1	4	3	0	0	8	0	2	1	0	0	3	1	3
Holt	1	10	2	2	1	16	4	3	5	0	1	13	3	8	4	1	4	20	2	7
Hooker	0	0	0	0	0	0	1	0	0	0	0	1	0	1	0	0	0	1	0	2
Howard	0	6	1	0	0	7	2	0	1	1	0	4	0	11	0	0	0	11	0	11
Jefferson	2	7	0	0	0	9	4	6	1	0	1	12	3	6	2	3	1	15	2	7
Johnson	1	4	0	1	0	6	0	4	1	0	0	5	2	6	1	0	0	9	0	5
Kearney	2	3	0	1	0	6	3	3	0	0	0	6	1	6	1	2	0	10	1	11
Keith	1	10	0	0	0	11	6	3	3	0	1	13	4	14	2	0	2	22	0	13
Kimball	0	4	1	0	0	5	0	4	0	0	0	4	0	4	1	1	1	7	2	5
Knox	1	10	0	0	0	11	2	8	0	0	2	12	1	13	2	1	1	18	4	12
Lancaster	66	257	23	14	16	376	149	153	30	10	11	353	77	277	59	24	19	456	57	326
Lincoln	15	49	5	1	1	71	20	26	1	2	1	50	12	44	4	2	4	66	15	44
Logan	0	0	0	0	0	0	1	2	0	0	0	3	0	3	0	0	0	3	0	3
Loup	0	0	0	0	0	0	0	1	0	0	0	1	0	0	1	0	0	1	0	0
Madison	15	52	4	1	0	72	11	36	5	3	4	59	9	49	19	1	2	80	12	46
McPherson	0	0	0	0	0	0	0	0	0	0	0	0	1	0	0	0	0	1	0	0
Merrick	3	12	1	0	1	17	4	1	1	0	2	8	1	3	3	0	0	7	0	3
Morrill	1	8	2	0	1	12	5	2	1	0	1	9	3	6	1	2	1	13	0	2
Nance	0	7	0	0	0	7	2	0	0	0	2	4	0	4	3	0	0	7	0	3
Nemaha	1	4	1	0	1	7	1	4	1	0	1	7	3	7	1	0	0	11	1	6

January 2015				February 2015					March 2015				County Total
31-45 Days	46-60 Days	Over 60	Mnthly Total	00-05 Days	06-30 Days	31-45 Days	46-60 Days	Mnthly Total	00-05 Days	06-30 Days	31-45 Days	Mnthly Total	
0	0	0	3	0	2	0	0	2	0	0	0	0	10
2	0	0	6	0	4	1	0	5	0	0	0	0	24
2	1	0	12	4	6	2	0	12	3	1	0	4	77
1	0	0	3	0	0	0	0	0	0	0	0	0	5
0	0	0	11	1	3	1	1	6	2	3	0	5	44
2	0	0	11	2	5	0	0	7	7	9	0	16	70
1	0	0	6	2	9	1	0	12	0	2	0	2	40
3	0	1	16	2	4	2	0	8	4	1	0	5	51
2	0	1	16	3	17	1	0	21	4	3	0	7	90
1	1	1	10	0	5	0	0	5	1	3	0	4	35
1	0	0	17	1	10	1	0	12	3	6	0	9	79
60	10	1	454	58	241	38	5	342	106	103	1	210	2,191
9	4	0	72	6	39	6	3	54	18	20	0	38	351
0	0	0	3	0	0	0	0	0	0	0	0	0	9
0	0	0	0	0	0	0	0	0	0	0	0	0	2
10	2	0	70	6	49	5	2	62	18	21	0	39	382
0	0	0	0	0	0	0	0	0	0	0	0	0	1
0	0	0	3	1	6	1	0	8	3	3	0	6	49
1	0	1	4	0	5	1	1	7	2	2	0	4	49
0	0	0	3	1	5	0	0	6	0	0	0	0	27
0	0	0	7	0	7	1	0	8	1	3	0	4	44

MEDICAID for Children and Families

	October 2014						November 2014						December 2014						January 2015	
	00-05 Days	06-30 Days	31-45 Days	46-60 Days	Over 60	Mnthly Total	00-05 Days	06-30 Days	31-45 Days	46-60 Days	Over 60	Mnthly Total	00-05 Days	06-30 Days	31-45 Days	46-60 Days	Over 60	Mnthly Total	00-05 Days	06-30 Days
Nuckolls	1	5	0	0	0	6	2	3	0	1	0	6	1	6	1	0	0	8	0	4
Otoe	3	14	1	1	1	20	10	6	1	1	0	18	4	21	3	3	2	33	3	21
Out-of-state	1	2	1	0	0	4	2	2	0	0	0	4	2	1	0	0	0	3	2	2
Pawnee	0	2	0	2	0	4	1	1	0	0	0	2	0	1	0	0	0	1	0	3
Perkins	1	3	0	0	0	4	2	2	0	0	0	4	0	3	2	0	2	7	0	4
Phelps	3	2	2	2	1	10	5	4	0	0	0	9	2	8	4	4	0	18	0	6
Pierce	3	5	0	0	0	8	3	1	0	0	0	4	1	5	1	0	1	8	0	6
Platte	14	35	6	0	1	56	21	15	0	1	1	38	10	42	7	5	1	65	9	42
Polk	2	3	0	1	0	6	2	1	0	0	0	3	2	3	1	0	1	7	0	3
Red Willow	0	12	0	0	1	13	3	8	3	1	1	16	2	11	0	1	2	16	6	10
Richardson	1	12	2	0	0	15	5	0	0	0	1	6	0	8	2	0	1	11	1	11
Rock	0	2	0	0	0	2	0	1	0	0	0	1	0	0	0	0	0	0	0	0
Saline	3	13	1	0	0	17	3	7	2	1	0	13	3	10	7	0	0	20	1	15
Sarpy	30	118	12	3	4	167	63	81	15	4	4	167	34	139	26	8	8	215	27	139
Saunders	2	11	3	2	1	19	10	7	1	0	1	19	7	24	5	2	2	40	2	30
Scotts Bluff	15	52	10	1	2	80	30	32	12	6	3	83	7	56	15	6	8	92	13	69
Seward	2	8	2	0	0	12	1	6	4	0	0	11	2	10	1	1	1	15	2	9
Sheridan	2	7	2	1	0	12	2	2	4	1	0	9	1	10	1	1	1	14	0	8
Sherman	1	4	1	0	0	6	2	1	0	0	0	3	1	2	1	0	0	4	1	3
Sioux	0	0	0	0	0	0	0	0	0	0	0	0	0	0	0	0	0	0	0	1
Stanton	0	6	2	0	0	8	2	1	0	0	0	3	0	3	1	1	0	5	0	5

January 2015				February 2015					March 2015				County Total
31-45 Days	46-60 Days	Over 60	Mnthly Total	00-05 Days	06-30 Days	31-45 Days	46-60 Days	Mnthly Total	00-05 Days	06-30 Days	31-45 Days	Mnthly Total	
0	0	0	4	0	3	0	0	3	2	2	0	4	31
1	1	0	26	0	20	3	0	23	7	3	0	10	130
0	0	0	4	1	2	2	0	5	1	0	0	1	21
2	0	1	6	2	4	0	0	6	0	1	0	1	20
2	0	0	6	0	3	1	0	4	1	1	0	2	27
2	1	0	9	1	0	2	1	4	0	4	0	4	54
0	0	0	6	0	7	1	0	8	0	1	0	1	35
9	2	1	63	6	32	3	0	41	15	14	1	30	293
2	0	2	7	0	6	0	0	6	2	0	0	2	31
0	1	1	18	5	17	1	0	23	3	9	0	12	98
1	2	1	16	1	8	1	0	10	3	4	0	7	65
0	0	0	0	0	0	1	0	1	0	0	0	0	4
4	1	0	21	1	7	1	0	9	4	7	0	11	91
18	7	3	194	10	120	23	2	155	43	57	0	100	998
1	2	0	35	3	11	2	0	16	4	9	0	13	142
9	3	1	95	9	53	12	1	75	22	20	0	42	467
1	0	0	12	2	9	0	2	13	5	6	0	11	74
2	1	1	12	0	2	1	1	4	1	2	0	3	54
0	0	0	4	1	1	0	0	2	0	2	0	2	21
0	0	0	1	1	0	0	0	1	0	0	0	0	2
1	0	1	7	0	0	0	0	0	0	2	0	2	25

	October 2014						November 2014						December 2014						January 2015	
	00-05 Days	06-30 Days	31-45 Days	46-60 Days	Over 60	Mnthly Total	00-05 Days	06-30 Days	31-45 Days	46-60 Days	Over 60	Mnthly Total	00-05 Days	06-30 Days	31-45 Days	46-60 Days	Over 60	Mnthly Total	00-05 Days	06-30 Days
Thayer	1	6	1	1	0	9	5	3	2	0	1	11	2	3	1	0	2	8	1	3
Thomas	0	0	0	0	0	0	1	0	0	0	0	1	0	2	0	0	0	2	0	0
Thurston	6	43	6	1	2	58	11	11	0	1	0	23	6	25	6	1	3	41	1	24
Valley	1	1	0	0	1	3	1	3	1	0	0	5	3	3	1	0	0	7	0	3
Washington	3	14	1	0	1	19	5	6	0	0	0	11	2	14	0	2	1	19	3	11
Wayne	3	9	1	0	0	13	2	4	0	1	1	8	3	9	2	1	0	15	0	8
Webster	0	5	0	0	1	6	2	1	0	1	1	5	1	5	0	0	1	7	0	5
Wheeler	0	1	0	0	0	1	0	1	0	0	0	1	0	0	0	0	0	0	0	3
York	4	16	1	0	1	22	3	12	1	1	0	17	2	7	2	3	0	14	3	13
Total	591	1,966	224	70	89	2,940	985	1,096	203	84	108	2,476	561	2,007	452	177	169	3,366	406	2,169

January 2015				February 2015					March 2015				County Total
31-45 Days	46-60 Days	Over 60	Mnthly Total	00-05 Days	06-30 Days	31-45 Days	46-60 Days	Mnthly Total	00-05 Days	06-30 Days	31-45 Days	Mnthly Total	
1	0	0	5	1	6	1	0	8	1	0	1	2	43
0	0	0	0	0	0	0	0	0	0	0	0	0	3
3	0	2	30	3	18	2	0	23	8	12	0	20	195
0	0	0	3	1	2	0	0	3	0	0	0	0	21
5	1	1	21	1	15	0	2	18	4	4	0	8	96
1	0	0	9	0	8	0	0	8	2	6	0	8	61
1	1	0	7	0	7	0	0	7	0	2	0	2	34
0	0	0	3	0	0	0	0	0	0	0	0	0	5
2	0	0	18	1	8	4	0	13	7	6	0	13	97
352	103	50	3,080	325	1,845	269	44	2,483	714	883	3	1,600	15,945

MEDICAID for Aged and Disabled

	October 2014						November 2014						December 2014						January 2015	
	00-05 Days	06-30 Days	31-45 Days	46-60 Days	Over 60	Mnthly Total	00-05 Days	06-30 Days	31-45 Days	46-60 Days	Over 60	Mnthly Total	00-05 Days	06-30 Days	31-45 Days	46-60 Days	Over 60	Mnthly Total	00-05 Days	06-30 Days
Adams	3	6	3	0	1	13	1	7	0	0	2	10	2	3	4	2	0	11	1	1
Antelope	0	3	2	1	1	7	0	0	0	1	0	1	1	1	0	0	0	2	0	1
Banner	0	0	0	0	0	0	0	1	0	0	0	1	0	0	0	0	0	0	0	0
Boone	0	0	0	0	0	0	0	0	2	0	0	2	1	1	1	0	1	4	0	0
Box Butte	2	2	0	2	0	6	0	3	0	2	1	6	0	2	1	0	0	3	0	1
Boyd	1	0	0	1	0	2	0	0	1	0	0	1	0	0	0	0	2	2	1	0
Brown	0	0	1	0	0	1	0	1	0	0	1	2	1	1	0	0	1	3	1	0
Buffalo	1	4	3	1	2	11	2	8	0	1	1	12	1	3	3	1	3	11	2	1
Burt	1	1	0	0	1	3	0	2	0	0	0	2	1	0	2	0	1	4	1	0
Butler	0	0	0	0	0	0	0	2	0	0	0	2	2	0	0	0	0	2	0	0
Cass	3	4	2	0	1	10	2	3	1	0	0	6	1	5	3	1	2	12	0	3
Cedar	1	3	0	0	0	4	0	0	0	0	0	0	0	0	0	0	0	0	1	0
Chase	0	0	2	0	0	2	2	0	0	1	0	3	1	0	1	0	0	2	1	0
Cherry	2	4	0	1	0	7	0	0	0	0	1	1	0	1	0	0	0	1	0	0
Cheyenne	0	3	1	1	0	5	1	3	1	0	0	5	0	2	1	0	2	5	3	2
Clay	1	1	0	0	2	4	0	1	2	0	1	4	0	2	0	0	0	2	0	0
Colfax	0	0	1	0	0	1	2	2	0	0	1	5	0	1	1	1	0	3	1	1
Cuming	2	0	0	0	0	2	0	0	1	0	1	2	0	1	1	0	0	2	0	1
Custer	1	3	1	2	0	7	1	2	0	0	0	3	0	2	1	0	0	3	0	2
Dakota	2	6	2	1	0	11	0	3	2	0	0	5	0	2	2	1	1	6	1	3
Dawes	1	1	3	0	0	5	0	0	1	0	0	1	0	3	0	1	1	5	1	3

January 2015				February 2015					March 2015				County Total
31-45 Days	46-60 Days	Over 60	Mnthly Total	00-05 Days	06-30 Days	31-45 Days	46-60 Days	Mnthly Total	00-05 Days	06-30 Days	31-45 Days	Mnthly Total	
4	0	3	9	0	10	0	0	10	4	4	0	8	61
0	0	0	1	0	1	1	0	2	0	1	0	1	14
0	0	0	0	0	0	0	0	0	0	0	0	0	1
0	1	0	1	0	0	0	0	0	0	0	0	0	7
0	0	0	1	1	1	0	0	2	1	1	0	2	20
0	0	0	1	0	2	0	0	2	1	1	0	2	10
0	1	0	2	0	0	0	0	0	0	0	0	0	8
1	2	0	6	1	7	1	1	10	2	3	0	5	55
1	1	0	3	0	0	0	0	0	0	0	0	0	12
0	0	0	0	0	0	0	0	0	0	0	0	0	4
1	0	1	5	0	4	0	0	4	2	1	0	3	40
0	0	0	1	0	0	0	0	0	0	0	0	0	5
1	0	0	2	0	2	0	0	2	0	0	0	0	11
1	1	0	2	0	3	1	0	4	0	0	0	0	15
0	1	2	8	0	1	0	0	1	0	1	0	1	25
0	0	0	0	0	2	0	0	2	0	0	0	0	12
3	1	0	6	0	0	0	0	0	0	1	0	1	16
0	0	0	1	1	0	1	1	3	1	1	0	2	12
1	0	0	3	0	1	1	0	2	0	1	0	1	19
0	0	0	4	0	3	1	0	4	3	1	0	4	34
1	1	0	6	0	0	1	0	1	0	1	0	1	19

MEDICAID for Aged and Disabled

	October 2014						November 2014						December 2014						January 2015	
	00-05 Days	06-30 Days	31-45 Days	46-60 Days	Over 60	Mnthly Total	00-05 Days	06-30 Days	31-45 Days	46-60 Days	Over 60	Mnthly Total	00-05 Days	06-30 Days	31-45 Days	46-60 Days	Over 60	Mnthly Total	00-05 Days	06-30 Days
Dawson	2	8	2	1	1	14	1	2	0	1	2	6	1	4	1	2	2	10	3	3
Deuel	0	0	1	2	0	3	0	0	0	0	0	0	0	0	0	0	0	0	1	0
Dixon	0	1	0	0	1	2	0	0	0	0	0	0	0	1	0	0	0	1	1	0
Dodge	3	9	4	4	1	21	1	6	3	2	2	14	2	5	4	1	0	12	3	7
Douglas	34	97	32	12	25	200	25	71	29	17	28	170	30	73	47	13	27	190	31	92
Dundy	0	1	0	0	1	2	1	0	0	0	1	2	0	0	0	0	0	0	0	0
Fillmore	1	0	0	1	1	3	0	2	0	0	0	2	0	1	0	0	0	1	0	0
Franklin	0	0	0	0	0	0	0	2	1	0	0	3	0	1	0	1	0	2	0	0
Frontier	0	1	1	0	0	2	1	0	0	0	1	2	0	0	0	0	0	0	0	0
Furnas	2	4	2	0	0	8	0	0	0	0	0	0	1	0	1	0	0	2	1	3
Gage	0	5	2	0	0	7	0	4	0	1	0	5	1	2	1	2	1	7	0	2
Garden	0	0	0	0	0	0	0	1	1	0	0	2	0	0	0	0	0	0	0	0
Garfield	1	0	0	0	0	1	0	0	0	0	1	1	0	1	0	0	0	1	0	1
Gosper	0	0	0	1	0	1	0	1	0	0	0	1	0	0	0	0	0	0	0	0
Grant	0	0	0	1	0	1	0	0	1	0	0	1	0	0	0	0	0	0	0	0
Greeley	1	0	0	0	0	1	0	0	0	0	0	0	0	0	0	0	0	0	0	0
Hall	5	17	3	2	2	29	3	7	3	2	3	18	7	8	5	3	3	26	4	7
Hamilton	0	0	0	0	0	0	1	1	0	0	0	2	0	1	0	0	0	1	1	0
Harlan	2	0	0	0	0	2	0	0	0	0	0	0	0	1	0	0	0	1	0	0
Hayes	0	0	0	1	0	1	0	0	0	0	0	0	0	0	0	0	0	0	0	1
Hitchcock	0	1	0	0	0	1	0	1	0	0	0	1	1	0	0	0	0	1	0	1

January 2015				February 2015					March 2015				County Total
31-45 Days	46-60 Days	Over 60	Mnthly Total	00-05 Days	06-30 Days	31-45 Days	46-60 Days	Mnthly Total	00-05 Days	06-30 Days	31-45 Days	Mnthly Total	
2	3	1	12	1	3	2	0	6	0	2	0	2	50
0	0	1	2	0	0	1	0	1	0	0	0	0	6
1	0	0	2	0	0	0	0	0	1	0	0	1	6
2	3	0	15	1	4	1	0	6	1	4	0	5	73
40	19	12	194	21	56	19	2	98	24	54	0	78	930
0	0	0	0	0	0	0	0	0	0	0	0	0	4
1	0	0	1	0	1	0	0	1	0	1	0	1	9
0	1	0	1	0	0	0	0	0	0	0	0	0	6
0	0	0	0	0	0	0	0	0	0	0	0	0	4
1	1	0	6	0	1	0	1	2	0	0	0	0	18
2	0	0	4	4	0	1	2	7	1	0	0	1	31
0	0	0	0	0	0	0	0	0	0	0	0	0	2
0	1	0	2	0	0	0	0	0	0	0	0	0	5
0	0	0	0	0	1	0	0	1	0	0	0	0	3
0	0	0	0	0	0	0	0	0	0	0	0	0	2
0	0	0	0	0	0	0	0	0	0	0	0	0	1
5	3	0	19	3	2	1	0	6	1	7	0	8	106
1	0	0	2	0	0	1	1	2	0	0	0	0	7
0	0	0	0	0	1	0	0	1	0	1	0	1	5
0	0	0	1	0	0	0	0	0	0	0	0	0	2
0	0	0	1	0	0	0	0	0	0	0	0	0	4

MEDICAID for Aged and Disabled

	October 2014						November 2014						December 2014						January 2015	
	00-05 Days	06-30 Days	31-45 Days	46-60 Days	Over 60	Mnthly Total	00-05 Days	06-30 Days	31-45 Days	46-60 Days	Over 60	Mnthly Total	00-05 Days	06-30 Days	31-45 Days	46-60 Days	Over 60	Mnthly Total	00-05 Days	06-30 Days
Holt	0	2	1	1	0	4	2	1	0	0	0	3	1	0	0	0	1	2	0	0
Hooker	0	1	0	0	0	1	0	0	0	0	0	0	0	0	0	0	0	0	0	0
Howard	0	2	1	0	0	3	0	0	0	0	0	0	0	1	0	0	1	2	0	1
Jefferson	1	2	1	1	0	5	5	1	1	0	0	7	1	1	0	0	0	2	1	0
Johnson	0	1	0	1	0	2	0	1	0	0	0	1	1	2	0	0	0	3	2	1
Kearney	0	1	0	0	0	1	0	0	0	0	0	0	0	0	0	0	1	1	0	0
Keith	0	1	2	0	0	3	0	1	0	0	1	2	0	1	0	0	2	3	1	1
Kimball	2	1	0	0	0	3	0	1	0	0	0	1	0	4	0	0	0	4	0	0
Knox	1	3	0	0	0	4	0	0	2	0	0	2	0	2	1	0	0	3	0	1
Lancaster	10	46	17	9	6	88	15	24	12	7	12	70	12	35	27	14	12	100	13	33
Lincoln	6	8	5	1	1	21	1	9	2	2	1	15	2	4	5	2	4	17	3	5
Logan	0	0	0	0	1	1	0	0	0	0	0	0	0	0	0	0	0	0	0	0
Loup	0	0	0	0	0	0	0	1	0	0	0	1	0	0	0	0	0	0	0	0
Madison	3	6	6	2	2	19	0	3	1	1	2	7	4	6	2	1	5	18	4	2
Merrick	0	0	0	1	0	1	1	0	0	0	1	2	0	0	1	0	0	1	2	1
Morrill	1	2	0	0	0	3	0	1	0	0	0	1	1	1	0	0	0	2	0	2
Nance	1	0	0	0	0	1	0	0	0	0	0	0	0	0	2	0	0	2	0	0
Nemaha	1	2	0	0	1	4	0	0	1	1	0	2	0	1	1	0	0	2	1	1
Nuckolls	0	1	0	0	0	1	0	3	0	0	0	3	0	0	2	0	0	2	0	1
Otoe	0	1	1	1	0	3	0	3	0	0	0	3	0	5	1	0	1	7	0	2
Out-of-state	2	0	1	1	0	4	1	0	0	0	0	1	0	1	0	0	0	1	0	0

January 2015				February 2015					March 2015				County Total
31-45 Days	46-60 Days	Over 60	Mnthly Total	00-05 Days	06-30 Days	31-45 Days	46-60 Days	Mnthly Total	00-05 Days	06-30 Days	31-45 Days	Mnthly Total	
0	0	0	0	2	1	2	0	5	1	2	0	3	17
0	0	0	0	0	0	0	0	0	0	0	0	0	1
1	0	0	2	0	0	0	0	0	0	0	0	0	7
0	1	0	2	1	2	0	0	3	0	0	0	0	19
0	0	0	3	0	0	0	0	0	0	1	0	1	10
0	0	0	0	0	3	0	0	3	0	1	0	1	6
1	2	1	6	0	0	3	0	3	0	0	0	0	17
1	0	0	1	0	0	0	0	0	0	0	0	0	9
1	0	1	3	0	0	0	0	0	0	1	0	1	13
24	2	2	74	10	37	13	2	62	7	32	0	39	433
3	1	2	14	3	2	1	0	6	3	2	0	5	78
0	0	0	0	0	0	0	0	0	1	0	0	1	2
0	0	0	0	0	0	0	0	0	0	0	0	0	1
1	0	0	7	0	4	0	0	4	1	0	1	2	57
0	1	0	4	0	0	0	0	0	1	1	0	2	10
0	0	1	3	0	0	0	0	0	1	1	0	2	11
0	0	0	0	0	1	0	1	2	0	0	0	0	5
0	0	0	2	0	0	0	0	0	0	0	0	0	10
1	0	0	2	0	0	0	0	0	0	1	0	1	9
1	1	2	6	0	2	0	0	2	0	1	0	1	22
0	0	0	0	0	0	0	0	0	2	0	0	2	8

MEDICAID for Aged and Disabled

	October 2014						November 2014						December 2014						January 2015	
	00-05 Days	06-30 Days	31-45 Days	46-60 Days	Over 60	Mnthly Total	00-05 Days	06-30 Days	31-45 Days	46-60 Days	Over 60	Mnthly Total	00-05 Days	06-30 Days	31-45 Days	46-60 Days	Over 60	Mnthly Total	00-05 Days	06-30 Days
Pawnee	0	0	1	0	0	1	0	0	0	0	0	0	0	0	0	0	1	1	1	0
Perkins	0	0	0	0	0	0	1	0	0	0	0	1	0	0	0	0	0	0	0	0
Phelps	0	1	0	0	0	1	0	2	0	0	1	3	1	3	2	1	2	9	1	0
Pierce	0	0	0	0	0	0	0	0	0	0	1	1	0	1	0	1	0	2	0	0
Platte	1	5	3	0	1	10	1	3	3	0	0	7	2	3	2	2	2	11	3	8
Polk	0	1	0	0	1	2	0	0	0	0	0	0	0	1	0	0	0	1	0	1
Red Willow	1	3	0	0	0	4	0	4	1	0	1	6	0	1	1	1	0	3	0	0
Richardson	1	4	2	0	0	7	0	0	1	0	0	1	1	0	0	0	2	3	0	1
Rock	0	0	0	2	0	2	0	0	0	0	0	0	0	0	0	0	0	0	0	0
Saline	0	1	1	0	0	2	0	2	0	0	0	2	2	2	1	1	0	6	1	1
Sarpy	6	17	10	1	2	36	8	12	5	1	1	27	4	14	10	3	6	37	5	16
Saunders	1	1	2	1	1	6	0	2	0	0	0	2	1	0	1	1	1	4	1	4
Scotts Bluff	4	11	1	1	1	18	3	8	2	1	0	14	6	4	6	4	4	24	1	12
Seward	0	1	0	0	0	1	1	0	1	0	0	2	3	0	0	0	0	3	2	0
Sheridan	0	2	0	0	0	2	0	0	1	0	0	1	2	1	0	1	0	4	1	1
Sherman	1	0	0	0	0	1	0	1	0	0	0	1	0	0	1	0	0	1	0	0
Sioux	0	0	0	0	0	0	0	0	0	0	0	0	0	0	0	0	0	0	0	0
Stanton	0	0	0	1	0	1	0	0	0	0	0	0	1	0	0	0	0	1	0	2
Thayer	0	0	0	0	0	0	0	0	1	0	0	1	0	4	2	0	0	6	0	1
Thomas	0	0	0	0	0	0	0	0	0	0	0	0	0	0	0	0	0	0	0	1
Thurston	0	4	2	0	0	6	0	2	1	0	0	3	1	5	2	1	4	13	0	0

January 2015				February 2015					March 2015				County Total
31-45 Days	46-60 Days	Over 60	Mnthly Total	00-05 Days	06-30 Days	31-45 Days	46-60 Days	Mnthly Total	00-05 Days	06-30 Days	31-45 Days	Mnthly Total	
0	0	0	1	0	0	0	0	0	0	0	0	0	3
1	0	0	1	0	0	0	0	0	0	0	0	0	2
0	0	0	1	0	0	0	1	1	0	2	0	2	17
0	0	0	0	0	0	0	0	0	0	0	0	0	3
3	1	1	16	0	1	0	0	1	1	2	0	3	48
0	0	0	1	0	0	0	0	0	0	0	0	0	4
1	0	0	1	3	1	0	0	4	0	1	0	1	19
2	0	0	3	0	3	1	0	4	0	1	0	1	19
0	0	0	0	0	0	0	0	0	0	0	0	0	2
0	0	0	2	1	0	0	0	1	0	1	0	1	14
6	3	2	32	6	11	3	0	20	4	4	0	8	160
1	2	0	8	1	1	0	0	2	0	3	0	3	25
1	2	2	18	1	12	3	1	17	1	3	0	4	95
1	0	0	3	0	1	0	1	2	0	2	0	2	13
1	1	0	4	1	1	0	0	2	0	0	0	0	13
0	1	0	1	0	0	0	0	0	0	0	0	0	4
0	0	0	0	1	0	0	0	1	0	0	0	0	1
0	0	0	2	0	0	0	0	0	0	0	0	0	4
0	1	0	2	0	0	1	1	2	0	1	1	2	13
0	0	0	1	0	0	0	0	0	0	0	0	0	1
1	0	0	1	1	0	0	0	1	1	1	0	2	26

	October 2014						November 2014						December 2014						January 2015	
	00-05 Days	06-30 Days	31-45 Days	46-60 Days	Over 60	Mnthly Total	00-05 Days	06-30 Days	31-45 Days	46-60 Days	Over 60	Mnthly Total	00-05 Days	06-30 Days	31-45 Days	46-60 Days	Over 60	Mnthly Total	00-05 Days	06-30 Days
Valley	0	0	0	0	0	0	1	0	2	0	0	3	0	0	1	0	0	1	0	0
Washington	1	2	2	0	0	5	0	2	1	0	3	6	1	3	3	1	0	8	0	1
Wayne	0	2	0	2	0	4	0	0	0	1	0	1	0	0	0	0	0	0	0	1
Webster	1	2	0	1	0	4	0	0	0	2	0	2	1	2	0	0	1	4	0	2
York	1	2	1	1	1	6	0	0	0	0	1	1	0	1	1	0	0	2	1	0
Total	118	324	128	63	58	691	84	223	87	44	72	510	102	237	155	63	97	654	103	239

January 2015				February 2015					March 2015				County Total
31-45 Days	46-60 Days	Over 60	Mnthly Total	00-05 Days	06-30 Days	31-45 Days	46-60 Days	Mnthly Total	00-05 Days	06-30 Days	31-45 Days	Mnthly Total	
0	0	0	0	0	0	0	0	0	0	0	0	0	4
2	1	2	6	0	3	0	0	3	0	4	0	4	32
0	0	0	1	0	0	1	0	1	0	1	0	1	8
0	0	0	2	0	0	2	0	2	0	0	0	0	14
1	0	0	2	1	2	1	0	4	0	0	0	0	15
124	60	36	562	65	194	64	15	338	66	155	2	223	2,978

Children's Health Insurance Program

	October 2014						November 2014						December 2014						January 2015	
	00-05 Days	06-30 Days	31-45 Days	46-60 Days	Over 60	Mnthly Total	00-05 Days	06-30 Days	31-45 Days	46-60 Days	Over 60	Mnthly Total	00-05 Days	06-30 Days	31-45 Days	46-60 Days	Over 60	Mnthly Total	00-05 Days	06-30 Days
Adams	2	2	0	0	0	4	3	4	0	0	0	7	3	9	1	0	0	13	4	9
Antelope	0	0	0	0	0	0	0	0	0	0	0	0	0	2	0	0	0	2	0	3
Banner	1	1	0	0	0	2	0	0	0	0	0	0	0	0	0	0	0	0	0	0
Blaine	0	0	0	0	0	0	0	0	0	0	0	0	0	0	0	0	0	0	0	0
Boone	0	0	0	0	0	0	0	0	1	0	0	1	2	5	0	0	0	7	0	2
Box Butte	2	2	0	0	0	4	2	0	0	0	0	2	0	3	1	0	0	4	0	2
Boyd	0	1	0	0	0	1	0	0	0	0	0	0	0	0	0	0	0	0	0	0
Brown	0	4	0	0	0	4	0	1	0	0	0	1	1	1	0	0	0	2	1	1
Buffalo	4	11	3	1	1	20	3	6	1	0	0	10	4	9	1	0	0	14	2	8
Burt	0	1	0	0	0	1	0	0	0	0	0	0	2	3	3	0	0	8	0	3
Butler	0	0	0	0	0	0	1	0	0	0	0	1	0	2	0	0	0	2	0	1
Cass	0	2	0	1	0	3	3	2	0	0	0	5	1	10	0	0	0	11	3	9
Cedar	0	0	0	0	0	0	1	1	0	0	0	2	0	2	0	0	0	2	0	3
Chase	0	0	0	0	0	0	0	1	0	0	0	1	2	1	0	0	0	3	0	3
Cherry	0	2	0	0	0	2	1	0	1	0	1	3	0	1	0	0	0	1	0	1
Cheyenne	0	2	0	0	0	2	1	1	1	0	0	3	1	3	0	0	0	4	0	5
Clay	0	2	0	0	0	2	3	1	1	0	0	5	0	7	0	0	0	7	0	0
Colfax	2	5	0	0	0	7	1	0	2	0	0	3	3	4	1	1	1	10	1	3
Cuming	1	2	0	0	0	3	0	0	0	0	0	0	0	2	0	0	0	2	1	3
Custer	0	2	0	0	0	2	1	1	0	0	0	2	0	4	0	0	0	4	1	8
Dakota	3	5	1	0	0	9	3	6	1	0	0	10	2	8	2	0	0	12	0	7

January 2015				February 2015					March 2015			County Total
31-45 Days	46-60 Days	Over 60	Mnthly Total	00-05 Days	06-30 Days	31-45 Days	46-60 Days	Mnthly Total	00-05 Days	06-30 Days	Mnthly Total	
1	0	0	14	4	7	2	0	13	2	2	4	55
0	0	0	3	0	0	0	0	0	0	1	1	6
0	0	0	0	0	0	0	0	0	0	0	0	2
0	0	0	0	0	1	0	0	1	0	0	0	1
0	0	0	2	0	1	0	0	1	0	0	0	11
1	0	0	3	0	5	0	0	5	1	2	3	21
0	0	0	0	1	1	0	0	2	0	0	0	3
0	0	0	2	0	1	0	0	1	0	0	0	10
0	0	0	10	5	11	2	0	18	1	0	1	73
0	0	0	3	0	1	0	0	1	0	0	0	13
0	0	0	1	0	1	0	0	1	0	0	0	5
1	0	0	13	0	10	0	0	10	2	0	2	44
0	1	0	4	0	0	0	0	0	0	0	0	8
0	0	0	3	0	5	0	0	5	2	0	2	14
1	0	0	2	0	3	1	0	4	0	1	1	13
0	0	0	5	0	5	0	0	5	1	0	1	20
0	0	0	0	0	2	0	0	2	1	1	2	18
1	1	0	6	1	4	3	0	8	3	1	4	38
0	0	0	4	0	1	0	0	1	0	1	1	11
0	0	0	9	0	5	0	0	5	5	0	5	27
2	0	0	9	2	6	1	0	9	1	7	8	57

Children's Health Insurance Program

	October 2014						November 2014						December 2014						January 2015	
	00-05 Days	06-30 Days	31-45 Days	46-60 Days	Over 60	Mnthly Total	00-05 Days	06-30 Days	31-45 Days	46-60 Days	Over 60	Mnthly Total	00-05 Days	06-30 Days	31-45 Days	46-60 Days	Over 60	Mnthly Total	00-05 Days	06-30 Days
Dawes	1	1	0	0	0	2	1	0	0	0	0	1	1	2	1	0	0	4	0	1
Dawson	2	7	3	1	0	13	3	4	1	0	0	8	1	7	2	0	0	10	3	6
Deuel	1	1	0	0	0	2	0	1	0	0	0	1	0	1	0	0	0	1	0	1
Dixon	0	0	0	0	0	0	1	0	0	0	0	1	0	1	0	0	0	1	0	0
Dodge	3	14	1	0	0	18	6	6	1	0	0	13	6	10	2	2	1	21	1	8
Douglas	51	93	8	2	4	158	55	52	15	5	1	128	44	122	26	9	3	204	35	135
Dundy	0	0	0	0	0	0	0	0	0	0	0	0	0	0	0	0	0	0	0	1
Fillmore	0	3	0	0	0	3	0	0	0	0	0	0	1	1	0	0	0	2	0	4
Franklin	0	0	0	0	0	0	0	0	0	0	0	0	0	3	0	0	1	4	0	0
Frontier	0	1	0	0	0	1	0	0	0	0	0	0	0	0	0	0	0	0	0	2
Furnas	1	2	0	0	0	3	0	0	0	0	0	0	0	2	0	0	0	2	0	3
Gage	2	3	1	0	0	6	2	3	0	0	0	5	2	3	2	0	0	7	1	9
Garden	1	0	0	0	0	1	0	1	0	0	0	1	1	0	0	0	0	1	0	0
Garfield	0	0	0	0	0	0	0	0	0	0	0	0	0	0	0	0	0	0	0	0
Grant	1	0	0	0	0	1	0	0	0	0	0	0	0	1	0	0	0	1	0	0
Greeley	0	0	0	0	0	0	0	0	0	0	0	0	0	0	0	0	0	0	0	3
Hall	7	18	3	0	0	28	13	10	2	0	0	25	4	22	3	2	0	31	4	19
Hamilton	0	1	0	0	0	1	1	0	0	0	0	1	0	3	0	0	0	3	1	1
Harlan	1	0	0	0	0	1	0	0	0	0	0	0	0	3	0	0	0	3	0	1
Hayes	0	0	0	0	0	0	0	0	0	0	0	0	0	0	0	0	0	0	0	1
Hitchcock	0	1	0	0	0	1	1	0	0	0	0	1	0	1	0	0	0	1	0	1

January 2015				February 2015					March 2015			County Total
31-45 Days	46-60 Days	Over 60	Mnthly Total	00-05 Days	06-30 Days	31-45 Days	46-60 Days	Mnthly Total	00-05 Days	06-30 Days	Mnthly Total	
0	0	0	1	1	2	0	0	3	0	1	1	12
2	1	0	12	1	11	4	0	16	1	5	6	65
0	0	0	1	0	0	1	0	1	0	0	0	6
1	0	0	1	1	0	0	0	1	0	0	0	4
2	1	0	12	3	3	1	0	7	3	6	9	80
14	2	1	187	23	131	15	0	169	45	52	97	943
1	0	0	2	0	0	0	0	0	0	1	1	3
0	0	0	4	0	1	2	0	3	0	0	0	12
0	0	0	0	0	3	0	0	3	0	0	0	7
0	0	0	2	0	3	0	0	3	0	0	0	6
2	0	0	5	0	1	0	0	1	0	1	1	12
0	0	1	11	0	8	1	0	9	0	2	2	40
0	0	0	0	1	2	0	0	3	0	0	0	6
0	0	0	0	0	0	0	0	0	1	1	2	2
0	0	0	0	0	1	0	0	1	0	0	0	3
0	0	0	3	0	2	1	0	3	1	1	2	8
5	1	0	29	6	19	0	0	25	9	8	17	155
0	0	0	2	1	0	0	0	1	1	0	1	9
0	0	0	1	0	1	0	0	1	0	0	0	6
0	0	0	1	0	0	0	0	0	0	0	0	1
1	0	0	2	0	1	1	0	2	0	0	0	7

Children's Health Insurance Program

	October 2014						November 2014						December 2014						January 2015	
	00-05 Days	06-30 Days	31-45 Days	46-60 Days	Over 60	Mnthly Total	00-05 Days	06-30 Days	31-45 Days	46-60 Days	Over 60	Mnthly Total	00-05 Days	06-30 Days	31-45 Days	46-60 Days	Over 60	Mnthly Total	00-05 Days	06-30 Days
Holt	1	1	0	1	0	3	0	0	2	0	0	2	1	2	0	1	0	4	0	4
Howard	0	0	0	0	0	0	0	1	0	0	0	1	0	5	0	0	0	5	0	1
Jefferson	1	1	0	0	0	2	1	0	1	0	1	3	1	1	1	0	0	3	0	2
Johnson	1	0	0	0	0	1	0	1	1	0	0	2	0	0	0	0	0	0	0	0
Kearney	1	1	0	0	0	2	0	0	0	0	0	0	3	3	0	1	0	7	0	5
Keith	1	2	0	0	0	3	1	1	0	0	0	2	1	4	0	0	1	6	0	2
Keya Paha	0	0	0	0	0	0	0	1	0	0	0	1	0	0	0	0	0	0	0	0
Kimball	0	2	0	0	0	2	0	1	0	0	0	1	0	1	0	0	0	1	0	1
Knox	0	2	0	0	1	3	1	5	0	0	0	6	1	4	0	0	0	5	0	5
Lancaster	20	40	4	0	1	65	29	26	0	0	1	56	15	65	14	9	1	104	10	65
Lincoln	1	9	0	0	0	10	7	4	0	0	0	11	1	8	0	0	0	9	1	10
Loup	0	1	0	0	0	1	0	0	0	0	0	0	0	0	0	0	0	0	0	0
Madison	0	9	2	0	0	11	8	8	0	0	1	17	1	11	1	2	0	15	5	10
Merrick	1	2	0	0	0	3	0	1	2	0	0	3	0	2	0	0	0	2	1	1
Morrill	0	4	0	0	0	4	1	0	1	0	1	3	1	2	0	0	0	3	0	1
Nance	0	0	0	0	0	0	1	0	0	0	0	1	0	0	0	0	0	0	0	1
Nemaha	0	0	1	0	0	1	1	0	0	0	0	1	0	2	0	0	0	2	0	0
Nuckolls	0	0	1	0	0	1	1	2	0	0	0	3	0	1	1	0	0	2	0	1
Otoe	0	3	0	0	0	3	2	1	0	1	0	4	2	5	0	0	0	7	0	1
Out-of-state	0	0	0	0	0	0	1	0	0	0	0	1	0	0	0	0	0	0	0	0
Pawnee	0	1	0	0	0	1	1	0	0	0	0	1	0	0	0	1	0	1	0	1

January 2015				February 2015					March 2015			County Total
31-45 Days	46-60 Days	Over 60	Mnthly Total	00-05 Days	06-30 Days	31-45 Days	46-60 Days	Mnthly Total	00-05 Days	06-30 Days	Mnthly Total	
0	0	0	4	0	3	0	0	3	1	0	1	17
0	0	0	1	0	2	1	0	3	1	1	2	12
0	0	0	2	0	1	0	0	1	0	1	1	12
1	0	0	1	0	1	0	0	1	0	0	0	5
1	0	0	6	0	2	0	0	2	1	1	2	19
0	0	0	2	0	8	0	0	8	0	1	1	22
0	0	0	0	0	0	0	0	0	0	0	0	1
0	0	0	1	0	3	0	0	3	0	1	1	9
0	0	0	5	0	3	0	0	3	0	1	1	23
9	1	0	85	7	49	6	1	63	18	18	36	409
2	0	0	13	3	10	1	0	14	3	4	7	64
0	0	0	0	0	0	0	0	0	0	0	0	1
1	0	0	16	1	17	0	0	18	2	4	6	83
0	0	0	2	0	1	1	0	2	0	0	0	12
0	0	0	1	0	5	0	0	5	1	0	1	17
0	0	0	1	0	0	0	1	1	0	0	0	3
0	0	0	0	0	0	0	0	0	1	0	1	5
1	0	0	2	0	0	0	0	0	0	1	1	9
0	1	0	2	1	6	0	0	7	1	3	4	27
0	0	0	0	0	0	0	0	0	0	0	0	1
0	0	1	2	1	1	0	0	2	0	0	0	7

Children's Health Insurance Program

	October 2014						November 2014						December 2014						January 2015	
	00-05 Days	06-30 Days	31-45 Days	46-60 Days	Over 60	Mnthly Total	00-05 Days	06-30 Days	31-45 Days	46-60 Days	Over 60	Mnthly Total	00-05 Days	06-30 Days	31-45 Days	46-60 Days	Over 60	Mnthly Total	00-05 Days	06-30 Days
Perkins	0	0	0	0	0	0	1	1	0	0	0	2	1	0	0	0	1	2	0	0
Phelps	0	2	1	0	1	4	1	2	0	0	0	3	0	3	0	0	0	3	0	2
Pierce	0	1	0	0	0	1	1	0	0	0	0	1	0	1	1	1	0	3	0	4
Platte	1	7	1	0	0	9	3	3	0	0	0	6	6	11	2	1	0	20	3	7
Polk	0	1	1	0	0	2	0	0	0	0	0	0	1	4	0	0	0	5	0	0
Red Willow	0	2	0	0	0	2	0	2	1	0	0	3	0	3	0	0	1	4	0	2
Richardson	2	2	0	0	0	4	0	0	0	0	0	0	0	0	0	0	0	0	0	2
Rock	0	1	0	0	0	1	0	0	0	0	0	0	0	0	0	0	0	0	0	1
Saline	1	1	0	0	0	2	3	0	0	0	0	3	1	2	0	0	0	3	1	5
Sarpy	11	21	2	0	1	35	10	16	1	2	1	30	8	54	9	2	1	74	7	30
Saunders	1	5	1	0	0	7	0	1	0	0	0	1	2	6	0	0	0	8	0	7
Scotts Bluff	3	9	3	0	0	15	8	9	4	0	0	21	3	5	5	0	0	13	1	16
Seward	2	2	0	0	0	4	1	2	0	0	0	3	0	4	1	0	0	5	1	1
Sheridan	0	1	0	0	0	1	1	0	1	0	0	2	0	1	0	0	0	1	0	0
Sherman	1	0	0	0	0	1	1	0	0	0	0	1	0	0	0	0	0	0	1	0
Stanton	0	0	0	0	0	0	1	0	0	0	0	1	0	0	1	0	0	1	0	0
Thayer	1	0	0	0	0	1	0	1	0	0	0	1	1	0	0	0	0	1	0	1
Thomas	0	0	0	0	0	0	0	0	0	0	0	0	0	0	0	0	0	0	0	0
Thurston	2	10	1	0	0	13	3	1	0	0	0	4	1	2	1	0	0	4	1	6
Valley	0	0	0	0	0	0	0	2	0	0	0	2	0	2	0	0	0	2	0	2
Washington	0	2	0	0	0	2	1	2	0	0	0	3	1	2	1	1	0	5	0	4

January 2015				February 2015					March 2015			County Total
31-45 Days	46-60 Days	Over 60	Mnthly Total	00-05 Days	06-30 Days	31-45 Days	46-60 Days	Mnthly Total	00-05 Days	06-30 Days	Mnthly Total	
0	0	0	0	0	1	0	0	1	0	0	0	5
2	0	0	4	0	1	2	0	3	0	0	0	17
0	0	0	4	0	2	0	0	2	0	1	1	12
2	0	0	12	4	7	1	0	12	4	0	4	63
0	0	0	0	0	1	1	0	2	0	0	0	9
1	0	1	4	0	5	0	1	6	0	0	0	19
0	0	0	2	0	0	1	0	1	1	1	2	9
0	0	0	1	0	0	0	0	0	0	0	0	2
0	0	0	6	2	5	2	0	9	1	1	2	25
4	3	0	44	2	39	6	0	47	11	11	22	252
0	0	0	7	0	1	0	0	1	0	1	1	25
2	0	0	19	1	8	3	0	12	3	1	4	84
0	0	0	2	0	4	0	0	4	2	0	2	20
0	0	0	0	0	0	0	0	0	0	0	0	4
0	0	0	1	0	0	0	0	0	0	0	0	3
1	0	1	2	0	0	0	0	0	0	0	0	4
0	0	0	1	0	2	0	0	2	1	0	1	7
0	0	0	0	0	1	0	0	1	0	0	0	1
0	0	1	8	0	6	1	0	7	3	3	6	42
0	0	0	2	0	0	0	0	0	1	0	1	7
1	0	0	5	0	3	0	0	3	0	0	0	18

	October 2014						November 2014						December 2014						January 2015	
	00-05 Days	06-30 Days	31-45 Days	46-60 Days	Over 60	Mnthly Total	00-05 Days	06-30 Days	31-45 Days	46-60 Days	Over 60	Mnthly Total	00-05 Days	06-30 Days	31-45 Days	46-60 Days	Over 60	Mnthly Total	00-05 Days	06-30 Days
Wayne	0	4	0	0	0	4	2	2	0	0	0	4	1	2	0	1	0	4	0	3
Webster	0	2	0	0	0	2	0	1	0	0	0	1	0	3	0	0	0	3	0	1
Wheeler	0	0	0	0	0	0	0	0	0	0	0	0	0	0	0	0	0	0	0	0
York	1	3	0	0	1	5	1	2	0	0	0	3	2	1	2	0	0	5	0	3
Total	139	343	38	6	10	536	199	200	41	8	7	455	136	480	85	34	11	746	90	475

January 2015				February 2015					March 2015			County Total
31-45 Days	46-60 Days	Over 60	Mnthly Total	00-05 Days	06-30 Days	31-45 Days	46-60 Days	Mnthly Total	00-05 Days	06-30 Days	Mnthly Total	
0	0	0	3	0	0	1	0	1	0	0	0	16
0	0	0	1	0	1	1	0	2	0	1	1	10
0	0	0	0	0	1	0	0	1	0	0	0	1
0	1	0	4	1	4	0	0	5	1	1	2	24
63	13	6	647	73	463	63	3	602	137	151	288	3,274

599 CHIP

Total Approvals	298
Timely Approval	287
Untimely Approval	11
Agency Delay	4
Client Delay	7
Total Denials	33
Timely Denial	31
Untimely Denial	2
Client Delay	2

MEDICAID

Total Approvals	10,373
Timely Approval	9,965
Untimely Approval	408
Agency Delay	122
Client Delay	263
Third Party Delay	23
Total Denials	12,244
Timely Denial	11,258
Untimely Denial	986
Agency Delay	347
Client Delay	579
Third Party Delay	60

<u>County</u>	<u>Program</u>	<u>Month</u>	<u>Status Reason</u>	<u># of Program Cases</u>
Adams	CHIP	January	Eligibility Period Ended	1
Adams	CHIP	January	Other	1
Adams	CHIP	February	Eligibility Period Ended	3
Adams	CHIP	March	Eligibility Period Ended	3
Adams	Medicaid -Children and Families	January	No Eligible Participants	3
Adams	Medicaid -Children and Families	January	Other	1
Adams	Medicaid -Children and Families	March	Eligibility Period Ended	2
Adams	Medicaid -Children and Families	March	No Eligible Participants	1
Adams	Medicaid for Aged and Disabled	January	Case Review Not Completed	4
Adams	Medicaid for Aged and Disabled	January	Closed Retro MED	1
Adams	Medicaid for Aged and Disabled	January	Death of Participant	5
Adams	Medicaid for Aged and Disabled	January	Not Disabled Or Blind	1
Adams	Medicaid for Aged and Disabled	January	Other	2
Adams	Medicaid for Aged and Disabled	January	Unable to Locate or Moved	2
Adams	Medicaid for Aged and Disabled	February	Case Review Not Completed	1
Adams	Medicaid for Aged and Disabled	February	Closed Retro MED	5
Adams	Medicaid for Aged and Disabled	February	Death of Participant	5
Adams	Medicaid for Aged and Disabled	February	Eligibility Requirements Not Met	1
Adams	Medicaid for Aged and Disabled	February	Failed to Provide Information	2
Adams	Medicaid for Aged and Disabled	February	Unable to Locate or Moved	1
Adams	Medicaid for Aged and Disabled	March	Case Review Not Completed	1
Adams	Medicaid for Aged and Disabled	March	Death of Participant	7
Adams	Medicaid for Aged and Disabled	March	Failed to Provide Information	2
Adams	Medicaid for Aged and Disabled	March	In Another Case	8
Adams	Medicaid for Aged and Disabled	March	Not Disabled Or Blind	1
Antelope	Medicaid for Aged and Disabled	January	Case Review Not Completed	1
Antelope	Medicaid for Aged and Disabled	January	Death of Participant	1
Antelope	Medicaid for Aged and Disabled	January	Failed to Provide Information	2
Antelope	Medicaid for Aged and Disabled	February	Death of Participant	1
Antelope	Medicaid for Aged and Disabled	February	No Eligible Participants	1
Antelope	Medicaid for Aged and Disabled	February	Not Disabled Or Blind	1
Antelope	Medicaid for Aged and Disabled	March	Case Review Not Completed	1
Antelope	Medicaid for Aged and Disabled	March	Failed Living Arrangement	1
Arthur	Medicaid for Aged and Disabled	February	No Eligible Participants	1
Blaine	Medicaid for Aged and Disabled	February	Not Disabled Or Blind	1
Boone	Medicaid for Aged and Disabled	January	Death of Participant	1
Boone	Medicaid for Aged and Disabled	March	Case Review Not Completed	1
Boone	Medicaid for Aged and Disabled	March	In Another Case	1
Box Butte	Medicaid for Aged and Disabled	January	Case Review Not Completed	1
Box Butte	Medicaid for Aged and Disabled	January	Death of Participant	3
Box Butte	Medicaid for Aged and Disabled	January	In Another Case	1
Box Butte	Medicaid for Aged and Disabled	January	No Eligible Participants	1
Box Butte	Medicaid for Aged and Disabled	January	Unable to Locate or Moved	1
Box Butte	Medicaid for Aged and Disabled	February	Case Review Not Completed	1
Box Butte	Medicaid for Aged and Disabled	February	Death of Participant	1

Box Butte	Medicaid for Aged and Disabled	February	Failed to Provide Information	1
Box Butte	Medicaid for Aged and Disabled	February	Unable to Locate or Moved	1
Box Butte	Medicaid for Aged and Disabled	March	Death of Participant	1
Box Butte	Medicaid for Aged and Disabled	March	Failed to Provide Information	1
Box Butte	Medicaid for Aged and Disabled	March	Share of Cost Exceeds Need	1
Box Butte	Medicaid for Aged and Disabled	March	Unable to Locate or Moved	1
Boyd	Medicaid for Aged and Disabled	January	Death of Participant	1
Boyd	Medicaid for Aged and Disabled	February	Death of Participant	2
Boyd	Medicaid for Aged and Disabled	February	Failed to Provide Information	1
Brown	Medicaid for Aged and Disabled	January	Case Review Not Completed	1
Brown	Medicaid for Aged and Disabled	January	Death of Participant	2
Brown	Medicaid for Aged and Disabled	January	In Another Case	1
Brown	Medicaid for Aged and Disabled	February	Case Review Not Completed	1
Brown	Medicaid for Aged and Disabled	February	Failed to Provide Information	1
Brown	Medicaid for Aged and Disabled	March	Death of Participant	1
Buffalo	CHIP	January	Eligibility Period Ended	1
Buffalo	CHIP	March	Death of Participant	1
Buffalo	Medicaid for Aged and Disabled	January	Applying For/Receiving Other Assistance	1
Buffalo	Medicaid for Aged and Disabled	January	Case Review Not Completed	2
Buffalo	Medicaid for Aged and Disabled	January	Client Request	1
Buffalo	Medicaid for Aged and Disabled	January	Closed Retro MED	5
Buffalo	Medicaid for Aged and Disabled	January	Death of Participant	11
Buffalo	Medicaid for Aged and Disabled	January	Failed to Provide Information	2
Buffalo	Medicaid for Aged and Disabled	January	No Eligible Participants	2
Buffalo	Medicaid for Aged and Disabled	February	Case Review Not Completed	1
Buffalo	Medicaid for Aged and Disabled	February	Client Request	1
Buffalo	Medicaid for Aged and Disabled	February	Closed Retro MED	1
Buffalo	Medicaid for Aged and Disabled	February	Death of Participant	15
Buffalo	Medicaid for Aged and Disabled	February	Failed Dependent Child	1
Buffalo	Medicaid for Aged and Disabled	February	Failed to Provide Information	3
Buffalo	Medicaid for Aged and Disabled	February	In Another Case	2
Buffalo	Medicaid for Aged and Disabled	February	No Eligible Participants	1
Buffalo	Medicaid for Aged and Disabled	February	Not Considered a Resident of NE	1
Buffalo	Medicaid for Aged and Disabled	March	Case Review Not Completed	1
Buffalo	Medicaid for Aged and Disabled	March	Death of Participant	14
Buffalo	Medicaid for Aged and Disabled	March	Failed to Provide Information	3
Buffalo	Medicaid for Aged and Disabled	March	No Eligible Participants	1
Buffalo	Medicaid for Aged and Disabled	March	Not Considered a Resident of NE	1
Burt	Medicaid for Aged and Disabled	January	Death of Participant	4
Burt	Medicaid for Aged and Disabled	February	Death of Participant	4
Burt	Medicaid for Aged and Disabled	February	No Eligible Participants	1
Burt	Medicaid for Aged and Disabled	February	Share of Cost Exceeds Need	1
Burt	Medicaid for Aged and Disabled	February	Unable to Locate or Moved	1
Burt	Medicaid for Aged and Disabled	March	Case Review Not Completed	1
Burt	Medicaid for Aged and Disabled	March	Death of Participant	1
Burt	Medicaid for Aged and Disabled	March	Failed to Provide Information	2
Burt	Medicaid for Aged and Disabled	March	Share of Cost Exceeds Need	1

Butler	Medicaid for Aged and Disabled	January	Case Review Not Completed	1
Butler	Medicaid for Aged and Disabled	January	Death of Participant	3
Butler	Medicaid for Aged and Disabled	January	Share of Cost Exceeds Need	1
Butler	Medicaid for Aged and Disabled	February	Death Spenddown Not Met	1
Butler	Medicaid for Aged and Disabled	March	Death of Participant	2
Cass	CHIP	January	In Another Case	1
Cass	Medicaid for Aged and Disabled	January	Case Review Not Completed	1
Cass	Medicaid for Aged and Disabled	January	Closed Retro MED	1
Cass	Medicaid for Aged and Disabled	January	Death of Participant	6
Cass	Medicaid for Aged and Disabled	January	Failed to Provide Information	1
Cass	Medicaid for Aged and Disabled	January	In Another Case	1
Cass	Medicaid for Aged and Disabled	January	No Eligible Participants	2
Cass	Medicaid for Aged and Disabled	February	Closed Retro MED	3
Cass	Medicaid for Aged and Disabled	February	Death of Participant	4
Cass	Medicaid for Aged and Disabled	February	Failed Living Arrangement	1
Cass	Medicaid for Aged and Disabled	February	Failed to Provide Information	1
Cass	Medicaid for Aged and Disabled	February	In Another Case	1
Cass	Medicaid for Aged and Disabled	March	Case Review Not Completed	1
Cass	Medicaid for Aged and Disabled	March	Closed Retro MED	1
Cass	Medicaid for Aged and Disabled	March	Death of Participant	6
Cass	Medicaid for Aged and Disabled	March	In Another Case	1
Cass	Medicaid for Aged and Disabled	March	No Eligible Participants	2
Cass	Medicaid for Aged and Disabled	March	Unable to Locate or Moved	2
Cedar	Medicaid -Children and Families	February	No Eligible Participants	1
Cedar	Medicaid for Aged and Disabled	February	Death of Participant	3
Cedar	Medicaid for Aged and Disabled	February	In Another Case	1
Cedar	Medicaid for Aged and Disabled	March	Case Review Not Completed	2
Cedar	Medicaid for Aged and Disabled	March	Death of Participant	1
Cedar	Medicaid for Aged and Disabled	March	Unable to Locate or Moved	1
Chase	Medicaid for Aged and Disabled	January	Death of Participant	2
Chase	Medicaid for Aged and Disabled	January	In Another Case	1
Chase	Medicaid for Aged and Disabled	February	Death of Participant	2
Chase	Medicaid for Aged and Disabled	March	Death of Participant	1
Chase	Medicaid for Aged and Disabled	March	Not Considered a Resident of NE	1
Cherry	Medicaid for Aged and Disabled	January	Death of Participant	3
Cherry	Medicaid for Aged and Disabled	January	No Eligible Participants	1
Cherry	Medicaid for Aged and Disabled	January	Unable to Locate or Moved	1
Cherry	Medicaid for Aged and Disabled	March	Death of Participant	1
Cherry	Medicaid for Aged and Disabled	March	In Another Case	1
Cheyenne	Medicaid for Aged and Disabled	January	Case Review Not Completed	1
Cheyenne	Medicaid for Aged and Disabled	January	Closed Retro MED	1
Cheyenne	Medicaid for Aged and Disabled	January	Death of Participant	1
Cheyenne	Medicaid for Aged and Disabled	January	In Another Case	2
Cheyenne	Medicaid for Aged and Disabled	January	No Eligible Participants	1
Cheyenne	Medicaid for Aged and Disabled	January	Not Considered a Resident of NE	1
Cheyenne	Medicaid for Aged and Disabled	January	Unable to Locate or Moved	1
Cheyenne	Medicaid for Aged and Disabled	February	Death of Participant	2

Cheyenne	Medicaid for Aged and Disabled	February	In Another Case	1
Cheyenne	Medicaid for Aged and Disabled	March	Case Review Not Completed	2
Cheyenne	Medicaid for Aged and Disabled	March	Death of Participant	1
Cheyenne	Medicaid for Aged and Disabled	March	Failed to Provide Information	2
Clay	CHIP	February	Eligibility Period Ended	1
Clay	CHIP	March	Eligibility Period Ended	1
Clay	Medicaid -Children and Families	January	No Eligible Participants	2
Clay	Medicaid for Aged and Disabled	January	Death of Participant	2
Clay	Medicaid for Aged and Disabled	January	In Another Case	1
Clay	Medicaid for Aged and Disabled	February	Death of Participant	1
Clay	Medicaid for Aged and Disabled	February	Failed to Provide Information	2
Clay	Medicaid for Aged and Disabled	March	Case Review Not Completed	1
Clay	Medicaid for Aged and Disabled	March	Closed Retro MED	1
Clay	Medicaid for Aged and Disabled	March	Death of Participant	2
Clay	Medicaid for Aged and Disabled	March	In Another Case	1
Colfax	CHIP	January	Death of Participant	1
Colfax	CHIP	January	Eligibility Period Ended	1
Colfax	CHIP	February	Eligibility Period Ended	5
Colfax	CHIP	March	Eligibility Period Ended	5
Colfax	Medicaid -Children and Families	March	Eligibility Period Ended	1
Colfax	Medicaid for Aged and Disabled	January	Case Review Not Completed	1
Colfax	Medicaid for Aged and Disabled	January	Death of Participant	3
Colfax	Medicaid for Aged and Disabled	January	Not Considered a Resident of NE	1
Colfax	Medicaid for Aged and Disabled	January	Other	1
Colfax	Medicaid for Aged and Disabled	January	Share of Cost Exceeds Need	1
Colfax	Medicaid for Aged and Disabled	February	Death of Participant	2
Colfax	Medicaid for Aged and Disabled	February	Failed to Provide Information	2
Colfax	Medicaid for Aged and Disabled	March	Case Review Not Completed	2
Colfax	Medicaid for Aged and Disabled	March	Death of Participant	1
Cuming	CHIP	February	Eligibility Period Ended	1
Cuming	Medicaid for Aged and Disabled	January	Death of Participant	4
Cuming	Medicaid for Aged and Disabled	January	In Another Case	1
Cuming	Medicaid for Aged and Disabled	February	Death of Participant	2
Cuming	Medicaid for Aged and Disabled	March	Case Review Not Completed	2
Cuming	Medicaid for Aged and Disabled	March	Death of Participant	4
Cuming	Medicaid for Aged and Disabled	March	No Eligible Participants	1
Custer	Medicaid for Aged and Disabled	January	Case Review Not Completed	1
Custer	Medicaid for Aged and Disabled	January	Closed Retro MED	1
Custer	Medicaid for Aged and Disabled	January	Death of Participant	2
Custer	Medicaid for Aged and Disabled	February	Death of Participant	4
Custer	Medicaid for Aged and Disabled	February	Eligibility Requirements Not Met	1
Custer	Medicaid for Aged and Disabled	March	Case Review Not Completed	1
Custer	Medicaid for Aged and Disabled	March	Closed Retro MED	2
Custer	Medicaid for Aged and Disabled	March	Death of Participant	2
Custer	Medicaid for Aged and Disabled	March	In Another Case	1
Custer	Medicaid for Aged and Disabled	March	Sanctioned	1
Dakota	CHIP	February	Eligibility Period Ended	3

Dakota	CHIP	March	Eligibility Period Ended	3
Dakota	CHIP	March	In Another Case	1
Dakota	Medicaid -Children and Families	February	Eligibility Requirements Not Met	1
Dakota	Medicaid for Aged and Disabled	January	Case Review Not Completed	2
Dakota	Medicaid for Aged and Disabled	January	Death of Participant	5
Dakota	Medicaid for Aged and Disabled	January	Failed to Provide Information	1
Dakota	Medicaid for Aged and Disabled	January	No Eligible Participants	1
Dakota	Medicaid for Aged and Disabled	January	Share of Cost Exceeds Need	2
Dakota	Medicaid for Aged and Disabled	January	Unable to Locate or Moved	1
Dakota	Medicaid for Aged and Disabled	February	Death of Participant	2
Dakota	Medicaid for Aged and Disabled	February	No Eligible Participants	1
Dakota	Medicaid for Aged and Disabled	February	Not Considered a Resident of NE	1
Dakota	Medicaid for Aged and Disabled	February	Other	1
Dakota	Medicaid for Aged and Disabled	February	Unable to Locate or Moved	1
Dakota	Medicaid for Aged and Disabled	March	Case Review Not Completed	1
Dakota	Medicaid for Aged and Disabled	March	Death of Participant	2
Dakota	Medicaid for Aged and Disabled	March	Failed to Provide Information	2
Dawes	CHIP	February	Eligibility Period Ended	1
Dawes	Medicaid for Aged and Disabled	January	Client Request	1
Dawes	Medicaid for Aged and Disabled	February	Case Review Not Completed	1
Dawes	Medicaid for Aged and Disabled	February	Closed Retro MED	1
Dawes	Medicaid for Aged and Disabled	February	Death of Participant	1
Dawes	Medicaid for Aged and Disabled	March	Case Review Not Completed	1
Dawes	Medicaid for Aged and Disabled	March	Not Considered a Resident of NE	1
Dawson	CHIP	January	Eligibility Period Ended	3
Dawson	CHIP	February	Eligibility Period Ended	4
Dawson	CHIP	March	Eligibility Period Ended	1
Dawson	Medicaid for Aged and Disabled	January	Applying For/Receiving Other Assistance	1
Dawson	Medicaid for Aged and Disabled	January	Case Review Not Completed	4
Dawson	Medicaid for Aged and Disabled	January	Closed Retro MED	5
Dawson	Medicaid for Aged and Disabled	January	Death of Participant	9
Dawson	Medicaid for Aged and Disabled	January	Failed to Provide Information	1
Dawson	Medicaid for Aged and Disabled	January	No Eligible Participants	1
Dawson	Medicaid for Aged and Disabled	February	Case Review Not Completed	1
Dawson	Medicaid for Aged and Disabled	February	Client Request	1
Dawson	Medicaid for Aged and Disabled	February	Closed Retro MED	1
Dawson	Medicaid for Aged and Disabled	February	Death of Participant	5
Dawson	Medicaid for Aged and Disabled	February	Failed to Provide Information	3
Dawson	Medicaid for Aged and Disabled	February	No Eligible Participants	2
Dawson	Medicaid for Aged and Disabled	February	Unable to Locate or Moved	1
Dawson	Medicaid for Aged and Disabled	March	Case Review Not Completed	2
Dawson	Medicaid for Aged and Disabled	March	Closed Retro MED	1
Dawson	Medicaid for Aged and Disabled	March	Death of Participant	3
Dawson	Medicaid for Aged and Disabled	March	Failed to Provide Information	1
Dawson	Medicaid for Aged and Disabled	March	Ineligible Alien	1
Dawson	Medicaid for Aged and Disabled	March	No Eligible Participants	1
Dawson	Medicaid for Aged and Disabled	March	Not Considered a Resident of NE	1

Deuel	Medicaid for Aged and Disabled	January	Death of Participant	1
Deuel	Medicaid for Aged and Disabled	January	No Eligible Participants	1
Deuel	Medicaid for Aged and Disabled	February	Death of Participant	1
Deuel	Medicaid for Aged and Disabled	March	Case Review Not Completed	1
Dixon	Medicaid for Aged and Disabled	January	Death of Participant	1
Dixon	Medicaid for Aged and Disabled	February	Death of Participant	1
Dixon	Medicaid for Aged and Disabled	March	Death of Participant	2
Dixon	Medicaid for Aged and Disabled	March	Failed to Provide Information	1
Dodge	CHIP	January	Eligibility Period Ended	5
Dodge	CHIP	February	Eligibility Period Ended	2
Dodge	CHIP	March	Death of Participant	1
Dodge	CHIP	March	Eligibility Period Ended	1
Dodge	Medicaid for Aged and Disabled	January	Case Review Not Completed	2
Dodge	Medicaid for Aged and Disabled	January	Client Request	1
Dodge	Medicaid for Aged and Disabled	January	Closed Retro MED	8
Dodge	Medicaid for Aged and Disabled	January	Death of Participant	14
Dodge	Medicaid for Aged and Disabled	January	Failed to Provide Information	3
Dodge	Medicaid for Aged and Disabled	January	Not Considered a Resident of NE	1
Dodge	Medicaid for Aged and Disabled	January	Unable to Locate or Moved	1
Dodge	Medicaid for Aged and Disabled	February	Case Review Not Completed	5
Dodge	Medicaid for Aged and Disabled	February	Closed Retro MED	2
Dodge	Medicaid for Aged and Disabled	February	Death of Participant	17
Dodge	Medicaid for Aged and Disabled	February	Failed to Provide Information	1
Dodge	Medicaid for Aged and Disabled	February	Not Considered a Resident of NE	1
Dodge	Medicaid for Aged and Disabled	March	Client Request	1
Dodge	Medicaid for Aged and Disabled	March	Death of Participant	8
Dodge	Medicaid for Aged and Disabled	March	Failed Living Arrangement	1
Dodge	Medicaid for Aged and Disabled	March	Failed to Provide Information	5
Dodge	Medicaid for Aged and Disabled	March	In Another Case	2
Dodge	Medicaid for Aged and Disabled	March	No Eligible Participants	2
Dodge	Medicaid for Aged and Disabled	March	Unable to Locate or Moved	1
Douglas	CHIP	January	Eligibility Period Ended	40
Douglas	CHIP	January	Eligibility Requirements Not Met	1
Douglas	CHIP	January	In Another Case	2
Douglas	CHIP	January	No Eligible Participants	1
Douglas	CHIP	January	Other	3
Douglas	CHIP	January	Unable to Locate or Moved	2
Douglas	CHIP	February	Eligibility Period Ended	37
Douglas	CHIP	February	Eligibility Requirements Not Met	2
Douglas	CHIP	February	In Another Case	2
Douglas	CHIP	February	Other	1
Douglas	CHIP	March	Death of Participant	2
Douglas	CHIP	March	Eligibility Period Ended	58
Douglas	CHIP	March	Eligibility Requirements Not Met	1
Douglas	CHIP	March	In Another Case	1
Douglas	CHIP	March	Income Exceeds Standards	1
Douglas	CHIP	March	Not Considered a Resident of NE	1

Douglas	Medicaid -Children and Families	January	Eligibility Period Ended	1
Douglas	Medicaid -Children and Families	January	Failed to Provide Information	3
Douglas	Medicaid -Children and Families	January	Income Exceeds Standards	1
Douglas	Medicaid -Children and Families	January	Ineligible Alien	1
Douglas	Medicaid -Children and Families	January	No Eligible Participants	9
Douglas	Medicaid -Children and Families	January	Other	2
Douglas	Medicaid -Children and Families	January	Over Income - MAGI Gap Failure	1
Douglas	Medicaid -Children and Families	February	Eligibility Period Ended	3
Douglas	Medicaid -Children and Families	February	Failed to Provide Information	4
Douglas	Medicaid -Children and Families	February	No Eligible Participants	11
Douglas	Medicaid -Children and Families	February	Other	1
Douglas	Medicaid -Children and Families	February	Unable to Locate or Moved	1
Douglas	Medicaid -Children and Families	March	Failed to Provide Information	3
Douglas	Medicaid -Children and Families	March	In Another Case	1
Douglas	Medicaid -Children and Families	March	No Eligible Participants	7
Douglas	Medicaid for Aged and Disabled	January	Applying For/Receiving Other Assistance	3
Douglas	Medicaid for Aged and Disabled	January	Case Review Not Completed	64
Douglas	Medicaid for Aged and Disabled	January	Client Request	6
Douglas	Medicaid for Aged and Disabled	January	Closed Retro MED	52
Douglas	Medicaid for Aged and Disabled	January	Death of Participant	91
Douglas	Medicaid for Aged and Disabled	January	Does Not Meet Age Requirement	1
Douglas	Medicaid for Aged and Disabled	January	Eligibility Requirements Not Met	4
Douglas	Medicaid for Aged and Disabled	January	Failed Living Arrangement	8
Douglas	Medicaid for Aged and Disabled	January	Failed to Provide Information	34
Douglas	Medicaid for Aged and Disabled	January	In Another Case	24
Douglas	Medicaid for Aged and Disabled	January	Ineligible Alien	1
Douglas	Medicaid for Aged and Disabled	January	No Eligible Participants	4
Douglas	Medicaid for Aged and Disabled	January	Not Considered a Resident of NE	2
Douglas	Medicaid for Aged and Disabled	January	Not Disabled Or Blind	3
Douglas	Medicaid for Aged and Disabled	January	Other	1
Douglas	Medicaid for Aged and Disabled	January	Sanctioned	1
Douglas	Medicaid for Aged and Disabled	January	Share of Cost Exceeds Need	6
Douglas	Medicaid for Aged and Disabled	January	Unable to Locate or Moved	21
Douglas	Medicaid for Aged and Disabled	February	Case Review Not Completed	23
Douglas	Medicaid for Aged and Disabled	February	Client Request	4
Douglas	Medicaid for Aged and Disabled	February	Closed Retro MED	25
Douglas	Medicaid for Aged and Disabled	February	Death of Participant	90
Douglas	Medicaid for Aged and Disabled	February	Death Spenddown Met	1
Douglas	Medicaid for Aged and Disabled	February	Does Not Meet Age Requirement	2
Douglas	Medicaid for Aged and Disabled	February	Eligibility Requirements Not Met	6
Douglas	Medicaid for Aged and Disabled	February	Failed Living Arrangement	4
Douglas	Medicaid for Aged and Disabled	February	Failed to Provide Information	21
Douglas	Medicaid for Aged and Disabled	February	In Another Case	22
Douglas	Medicaid for Aged and Disabled	February	No Eligible Participants	5
Douglas	Medicaid for Aged and Disabled	February	Not Considered a Resident of NE	6
Douglas	Medicaid for Aged and Disabled	February	Other	7
Douglas	Medicaid for Aged and Disabled	February	Share of Cost Exceeds Need	5

Douglas	Medicaid for Aged and Disabled	February	Unable to Locate or Moved	16
Douglas	Medicaid for Aged and Disabled	March	Applying For/Receiving Other Assistance	2
Douglas	Medicaid for Aged and Disabled	March	Case Review Not Completed	40
Douglas	Medicaid for Aged and Disabled	March	Client Request	2
Douglas	Medicaid for Aged and Disabled	March	Closed Retro MED	13
Douglas	Medicaid for Aged and Disabled	March	Death of Participant	78
Douglas	Medicaid for Aged and Disabled	March	Eligibility Requirements Not Met	4
Douglas	Medicaid for Aged and Disabled	March	Failed Living Arrangement	8
Douglas	Medicaid for Aged and Disabled	March	Failed to Provide Information	29
Douglas	Medicaid for Aged and Disabled	March	In Another Case	22
Douglas	Medicaid for Aged and Disabled	March	No Eligible Participants	6
Douglas	Medicaid for Aged and Disabled	March	Not Considered a Resident of NE	1
Douglas	Medicaid for Aged and Disabled	March	Not Disabled Or Blind	1
Douglas	Medicaid for Aged and Disabled	March	Other	5
Douglas	Medicaid for Aged and Disabled	March	Sanctioned	1
Douglas	Medicaid for Aged and Disabled	March	Share of Cost Exceeds Need	5
Douglas	Medicaid for Aged and Disabled	March	Transfer / Deprivation of Resources After 2/8/2006	1
Douglas	Medicaid for Aged and Disabled	March	Unable to Locate or Moved	12
Dundy	Medicaid for Aged and Disabled	January	Death of Participant	1
Dundy	Medicaid for Aged and Disabled	January	No Eligible Participants	1
Dundy	Medicaid for Aged and Disabled	March	Death of Participant	1
Fillmore	Medicaid for Aged and Disabled	January	Closed Retro MED	1
Fillmore	Medicaid for Aged and Disabled	January	In Another Case	1
Fillmore	Medicaid for Aged and Disabled	February	Case Review Not Completed	1
Fillmore	Medicaid for Aged and Disabled	February	Client Request	1
Fillmore	Medicaid for Aged and Disabled	February	Death of Participant	3
Fillmore	Medicaid for Aged and Disabled	March	Client Request	1
Fillmore	Medicaid for Aged and Disabled	March	Closed Retro MED	1
Fillmore	Medicaid for Aged and Disabled	March	Death of Participant	3
Fillmore	Medicaid for Aged and Disabled	March	Unable to Locate or Moved	1
Franklin	Medicaid for Aged and Disabled	January	Case Review Not Completed	1
Franklin	Medicaid for Aged and Disabled	January	Closed Retro MED	1
Franklin	Medicaid for Aged and Disabled	January	Death of Participant	3
Franklin	Medicaid for Aged and Disabled	March	Death of Participant	1
Frontier	Medicaid for Aged and Disabled	January	Eligibility Requirements Not Met	1
Frontier	Medicaid for Aged and Disabled	February	Death of Participant	1
Frontier	Medicaid for Aged and Disabled	March	Case Review Not Completed	1
Furnas	Medicaid for Aged and Disabled	February	Death of Participant	3
Furnas	Medicaid for Aged and Disabled	February	Failed to Provide Information	1
Furnas	Medicaid for Aged and Disabled	March	Death of Participant	2
Furnas	Medicaid for Aged and Disabled	March	Failed to Provide Information	1
Furnas	Medicaid for Aged and Disabled	March	Other	1
Gage	Medicaid for Aged and Disabled	January	Case Review Not Completed	4
Gage	Medicaid for Aged and Disabled	January	Closed Retro MED	4
Gage	Medicaid for Aged and Disabled	January	Death of Participant	8
Gage	Medicaid for Aged and Disabled	January	Eligibility Requirements Not Met	1
Gage	Medicaid for Aged and Disabled	January	Failed Living Arrangement	1

Gage	Medicaid for Aged and Disabled	January	In Another Case	1
Gage	Medicaid for Aged and Disabled	January	No Eligible Participants	1
Gage	Medicaid for Aged and Disabled	January	Share of Cost Exceeds Need	1
Gage	Medicaid for Aged and Disabled	January	Unable to Locate or Moved	1
Gage	Medicaid for Aged and Disabled	February	Closed Retro MED	1
Gage	Medicaid for Aged and Disabled	February	Death of Participant	8
Gage	Medicaid for Aged and Disabled	February	In Another Case	1
Gage	Medicaid for Aged and Disabled	February	No Eligible Participants	1
Gage	Medicaid for Aged and Disabled	February	Not Considered a Resident of NE	1
Gage	Medicaid for Aged and Disabled	March	Case Review Not Completed	2
Gage	Medicaid for Aged and Disabled	March	Death of Participant	6
Gage	Medicaid for Aged and Disabled	March	Failed to Provide Information	1
Gage	Medicaid for Aged and Disabled	March	In Another Case	1
Garden	Medicaid -Children and Families	February	No Eligible Participants	1
Garden	Medicaid for Aged and Disabled	February	Case Review Not Completed	1
Garden	Medicaid for Aged and Disabled	February	Death of Participant	3
Garden	Medicaid for Aged and Disabled	February	Failed to Provide Information	1
Garden	Medicaid for Aged and Disabled	March	Death of Participant	2
Garfield	Medicaid for Aged and Disabled	January	Closed Retro MED	1
Garfield	Medicaid for Aged and Disabled	January	Death of Participant	1
Garfield	Medicaid for Aged and Disabled	March	Case Review Not Completed	1
Gosper	Medicaid for Aged and Disabled	January	Client Request	1
Gosper	Medicaid for Aged and Disabled	February	Death of Participant	1
Gosper	Medicaid for Aged and Disabled	March	No Eligible Participants	1
Grant	Medicaid for Aged and Disabled	February	Failed to Provide Information	1
Greeley	Medicaid for Aged and Disabled	January	Failed to Provide Information	1
Greeley	Medicaid for Aged and Disabled	February	Closed Retro MED	1
Greeley	Medicaid for Aged and Disabled	February	Death of Participant	1
Hall	CHIP	January	Creditable Coverage	1
Hall	CHIP	January	Death of Participant	1
Hall	CHIP	January	Eligibility Period Ended	12
Hall	CHIP	January	In Another Case	1
Hall	CHIP	February	Death of Participant	1
Hall	CHIP	February	Eligibility Period Ended	8
Hall	CHIP	March	Death of Participant	1
Hall	CHIP	March	Eligibility Period Ended	6
Hall	CHIP	March	Failed to Provide Information	1
Hall	Medicaid for Aged and Disabled	January	Applying For/Receiving Other Assistance	1
Hall	Medicaid for Aged and Disabled	January	Case Review Not Completed	6
Hall	Medicaid for Aged and Disabled	January	Client Request	1
Hall	Medicaid for Aged and Disabled	January	Closed Retro MED	3
Hall	Medicaid for Aged and Disabled	January	Death of Participant	13
Hall	Medicaid for Aged and Disabled	January	Eligibility Requirements Not Met	1
Hall	Medicaid for Aged and Disabled	January	Failed Living Arrangement	1
Hall	Medicaid for Aged and Disabled	January	In Another Case	2
Hall	Medicaid for Aged and Disabled	January	No Eligible Participants	2
Hall	Medicaid for Aged and Disabled	January	Not Considered a Resident of NE	1

Hall	Medicaid for Aged and Disabled	January	Not Disabled Or Blind	1
Hall	Medicaid for Aged and Disabled	January	Unable to Locate or Moved	2
Hall	Medicaid for Aged and Disabled	February	Case Review Not Completed	2
Hall	Medicaid for Aged and Disabled	February	Closed Retro MED	2
Hall	Medicaid for Aged and Disabled	February	Death of Participant	17
Hall	Medicaid for Aged and Disabled	February	Eligibility Requirements Not Met	1
Hall	Medicaid for Aged and Disabled	February	Failed Living Arrangement	2
Hall	Medicaid for Aged and Disabled	February	Failed to Provide Information	1
Hall	Medicaid for Aged and Disabled	February	In Another Case	3
Hall	Medicaid for Aged and Disabled	February	No Eligible Participants	1
Hall	Medicaid for Aged and Disabled	February	Not Disabled Or Blind	1
Hall	Medicaid for Aged and Disabled	February	Sanctioned	1
Hall	Medicaid for Aged and Disabled	February	Unable to Locate or Moved	1
Hall	Medicaid for Aged and Disabled	March	Case Review Not Completed	4
Hall	Medicaid for Aged and Disabled	March	Closed Retro MED	2
Hall	Medicaid for Aged and Disabled	March	Death of Participant	15
Hall	Medicaid for Aged and Disabled	March	Failed to Provide Information	8
Hall	Medicaid for Aged and Disabled	March	In Another Case	1
Hall	Medicaid for Aged and Disabled	March	No Eligible Participants	4
Hall	Medicaid for Aged and Disabled	March	Other	2
Hall	Medicaid for Aged and Disabled	March	Unable to Locate or Moved	2
Hamilton	Medicaid for Aged and Disabled	January	Death of Participant	2
Hamilton	Medicaid for Aged and Disabled	January	No Eligible Participants	1
Hamilton	Medicaid for Aged and Disabled	February	Closed Retro MED	1
Hamilton	Medicaid for Aged and Disabled	February	Death of Participant	5
Hamilton	Medicaid for Aged and Disabled	February	In Another Case	1
Harlan	Medicaid for Aged and Disabled	January	Death of Participant	1
Harlan	Medicaid for Aged and Disabled	January	In Another Case	1
Harlan	Medicaid for Aged and Disabled	February	Case Review Not Completed	1
Harlan	Medicaid for Aged and Disabled	February	Death of Participant	1
Harlan	Medicaid for Aged and Disabled	March	Death of Participant	2
Harlan	Medicaid for Aged and Disabled	March	No Eligible Participants	1
Harlan	Medicaid for Aged and Disabled	March	Unable to Locate or Moved	1
Hayes	Medicaid for Aged and Disabled	January	In Another Case	1
Hayes	Medicaid for Aged and Disabled	March	Failed to Provide Information	1
Hitchcock	Medicaid for Aged and Disabled	January	Case Review Not Completed	1
Hitchcock	Medicaid for Aged and Disabled	January	Death of Participant	1
Hitchcock	Medicaid for Aged and Disabled	January	No Eligible Participants	1
Hitchcock	Medicaid for Aged and Disabled	March	Case Review Not Completed	1
Hitchcock	Medicaid for Aged and Disabled	March	Death of Participant	1
Hitchcock	Medicaid for Aged and Disabled	March	Eligibility Requirements Not Met	1
Hitchcock	Medicaid for Aged and Disabled	March	Failed to Provide Information	1
Holt	CHIP	January	Eligibility Period Ended	1
Holt	Medicaid for Aged and Disabled	January	Death of Participant	2
Holt	Medicaid for Aged and Disabled	January	Not Disabled Or Blind	1
Holt	Medicaid for Aged and Disabled	January	Unable to Locate or Moved	1
Holt	Medicaid for Aged and Disabled	February	Death of Participant	2

Holt	Medicaid for Aged and Disabled	February	In Another Case	1
Holt	Medicaid for Aged and Disabled	February	No Eligible Participants	1
Holt	Medicaid for Aged and Disabled	March	Applying For/Receiving Other Assistance	1
Holt	Medicaid for Aged and Disabled	March	Death of Participant	4
Hooker	Medicaid for Aged and Disabled	February	Death of Participant	2
Howard	Medicaid for Aged and Disabled	January	Closed Retro MED	1
Howard	Medicaid for Aged and Disabled	January	Death of Participant	1
Howard	Medicaid for Aged and Disabled	February	Death of Participant	1
Howard	Medicaid for Aged and Disabled	March	Case Review Not Completed	1
Howard	Medicaid for Aged and Disabled	March	Death of Participant	2
Jefferson	Medicaid for Aged and Disabled	January	Case Review Not Completed	2
Jefferson	Medicaid for Aged and Disabled	January	Death of Participant	5
Jefferson	Medicaid for Aged and Disabled	January	Eligibility Requirements Not Met	1
Jefferson	Medicaid for Aged and Disabled	January	Unable to Locate or Moved	1
Jefferson	Medicaid for Aged and Disabled	February	Death of Participant	2
Jefferson	Medicaid for Aged and Disabled	March	Death of Participant	5
Jefferson	Medicaid for Aged and Disabled	March	In Another Case	2
Jefferson	Medicaid for Aged and Disabled	March	Not Considered a Resident of NE	2
Jefferson	Medicaid for Aged and Disabled	March	Share of Cost Exceeds Need	2
Johnson	CHIP	February	Eligibility Period Ended	1
Johnson	Medicaid for Aged and Disabled	January	Death of Participant	2
Johnson	Medicaid for Aged and Disabled	January	No Eligible Participants	1
Johnson	Medicaid for Aged and Disabled	February	Death of Participant	3
Johnson	Medicaid for Aged and Disabled	March	Death of Participant	1
Kearney	Medicaid for Aged and Disabled	January	Case Review Not Completed	1
Kearney	Medicaid for Aged and Disabled	January	Closed Retro MED	1
Kearney	Medicaid for Aged and Disabled	January	Death of Participant	4
Kearney	Medicaid for Aged and Disabled	January	Unable to Locate or Moved	1
Kearney	Medicaid for Aged and Disabled	February	Closed Retro MED	1
Kearney	Medicaid for Aged and Disabled	February	Death of Participant	5
Kearney	Medicaid for Aged and Disabled	March	Case Review Not Completed	1
Kearney	Medicaid for Aged and Disabled	March	Death of Participant	4
Kearney	Medicaid for Aged and Disabled	March	In Another Case	2
Kearney	Medicaid for Aged and Disabled	March	No Eligible Participants	1
Keith	Medicaid for Aged and Disabled	January	Case Review Not Completed	1
Keith	Medicaid for Aged and Disabled	January	Closed Retro MED	2
Keith	Medicaid for Aged and Disabled	January	Death of Participant	3
Keith	Medicaid for Aged and Disabled	January	Eligibility Requirements Not Met	1
Keith	Medicaid for Aged and Disabled	February	Death of Participant	2
Keith	Medicaid for Aged and Disabled	February	Eligibility Requirements Not Met	1
Keith	Medicaid for Aged and Disabled	February	Failed to Provide Information	2
Keith	Medicaid for Aged and Disabled	February	Not Disabled Or Blind	1
Keith	Medicaid for Aged and Disabled	February	Unable to Locate or Moved	1
Keith	Medicaid for Aged and Disabled	March	Case Review Not Completed	1
Keith	Medicaid for Aged and Disabled	March	Death of Participant	3
Keith	Medicaid for Aged and Disabled	March	Failed to Provide Information	2
Keith	Medicaid for Aged and Disabled	March	No Eligible Participants	1

Keya Paha	Medicaid for Aged and Disabled	January	Death of Participant	1
Keya Paha	Medicaid for Aged and Disabled	January	No Eligible Participants	1
Kimball	Medicaid for Aged and Disabled	January	Closed Retro MED	1
Kimball	Medicaid for Aged and Disabled	January	Death of Participant	1
Kimball	Medicaid for Aged and Disabled	January	Unable to Locate or Moved	1
Kimball	Medicaid for Aged and Disabled	February	Death of Participant	2
Kimball	Medicaid for Aged and Disabled	March	Death of Participant	2
Kimball	Medicaid for Aged and Disabled	March	Failed to Provide Information	1
Knox	Medicaid -Children and Families	January	No Eligible Participants	1
Knox	Medicaid for Aged and Disabled	January	Case Review Not Completed	2
Knox	Medicaid for Aged and Disabled	January	Death of Participant	3
Knox	Medicaid for Aged and Disabled	January	Not Considered a Resident of NE	1
Knox	Medicaid for Aged and Disabled	February	Case Review Not Completed	1
Knox	Medicaid for Aged and Disabled	February	Death of Participant	4
Knox	Medicaid for Aged and Disabled	February	No Eligible Participants	1
Knox	Medicaid for Aged and Disabled	February	Not Disabled Or Blind	1
Knox	Medicaid for Aged and Disabled	March	Death of Participant	3
Lancaster	CHIP	January	Eligibility Period Ended	6
Lancaster	CHIP	January	Other	1
Lancaster	CHIP	February	Eligibility Period Ended	9
Lancaster	CHIP	March	Eligibility Period Ended	7
Lancaster	Medicaid -Children and Families	January	Failed to Provide Information	5
Lancaster	Medicaid -Children and Families	January	Income Exceeds Standards	1
Lancaster	Medicaid -Children and Families	January	No Eligible Participants	21
Lancaster	Medicaid -Children and Families	January	System Generated	1
Lancaster	Medicaid -Children and Families	February	Eligibility Requirements Not Met	1
Lancaster	Medicaid -Children and Families	February	Failed to Provide Information	5
Lancaster	Medicaid -Children and Families	February	No Eligible Participants	13
Lancaster	Medicaid -Children and Families	March	Failed to Provide Information	6
Lancaster	Medicaid -Children and Families	March	Ineligible Alien	1
Lancaster	Medicaid -Children and Families	March	No Eligible Participants	16
Lancaster	Medicaid -Children and Families	March	Other	1
Lancaster	Medicaid -Children and Families	March	Over Income - MAGI Gap Failure	1
Lancaster	Medicaid for Aged and Disabled	January	Applying For/Receiving Other Assistance	1
Lancaster	Medicaid for Aged and Disabled	January	Case Review Not Completed	22
Lancaster	Medicaid for Aged and Disabled	January	Client Request	1
Lancaster	Medicaid for Aged and Disabled	January	Closed Retro MED	9
Lancaster	Medicaid for Aged and Disabled	January	Death of Participant	35
Lancaster	Medicaid for Aged and Disabled	January	Eligibility Requirements Not Met	2
Lancaster	Medicaid for Aged and Disabled	January	Failed Living Arrangement	5
Lancaster	Medicaid for Aged and Disabled	January	Failed to Provide Information	13
Lancaster	Medicaid for Aged and Disabled	January	In Another Case	9
Lancaster	Medicaid for Aged and Disabled	January	No Eligible Participants	5
Lancaster	Medicaid for Aged and Disabled	January	Not Considered a Resident of NE	2
Lancaster	Medicaid for Aged and Disabled	January	Other	2
Lancaster	Medicaid for Aged and Disabled	January	Share of Cost Exceeds Need	2
Lancaster	Medicaid for Aged and Disabled	January	Unable to Locate or Moved	9

Lancaster	Medicaid for Aged and Disabled	February	Applying For/Receiving Other Assistance	2
Lancaster	Medicaid for Aged and Disabled	February	Case Review Not Completed	11
Lancaster	Medicaid for Aged and Disabled	February	Client Request	4
Lancaster	Medicaid for Aged and Disabled	February	Closed Retro MED	13
Lancaster	Medicaid for Aged and Disabled	February	Death of Participant	55
Lancaster	Medicaid for Aged and Disabled	February	Eligibility Requirements Not Met	5
Lancaster	Medicaid for Aged and Disabled	February	Failed Living Arrangement	2
Lancaster	Medicaid for Aged and Disabled	February	Failed to Provide Information	6
Lancaster	Medicaid for Aged and Disabled	February	In Another Case	8
Lancaster	Medicaid for Aged and Disabled	February	No Eligible Participants	4
Lancaster	Medicaid for Aged and Disabled	February	Other	2
Lancaster	Medicaid for Aged and Disabled	February	Share of Cost Exceeds Need	6
Lancaster	Medicaid for Aged and Disabled	February	Unable to Locate or Moved	7
Lancaster	Medicaid for Aged and Disabled	March	Case Review Not Completed	14
Lancaster	Medicaid for Aged and Disabled	March	Client Request	5
Lancaster	Medicaid for Aged and Disabled	March	Closed Retro MED	8
Lancaster	Medicaid for Aged and Disabled	March	Death of Participant	36
Lancaster	Medicaid for Aged and Disabled	March	Eligibility Requirements Not Met	4
Lancaster	Medicaid for Aged and Disabled	March	Failed Living Arrangement	1
Lancaster	Medicaid for Aged and Disabled	March	Failed to Provide Information	18
Lancaster	Medicaid for Aged and Disabled	March	In Another Case	11
Lancaster	Medicaid for Aged and Disabled	March	No Eligible Participants	6
Lancaster	Medicaid for Aged and Disabled	March	Not Considered a Resident of NE	3
Lancaster	Medicaid for Aged and Disabled	March	Not Disabled Or Blind	2
Lancaster	Medicaid for Aged and Disabled	March	Other	1
Lancaster	Medicaid for Aged and Disabled	March	Share of Cost Exceeds Need	1
Lancaster	Medicaid for Aged and Disabled	March	Unable to Locate or Moved	15
Lincoln	Medicaid for Aged and Disabled	January	Case Review Not Completed	4
Lincoln	Medicaid for Aged and Disabled	January	Closed Retro MED	1
Lincoln	Medicaid for Aged and Disabled	January	Death of Participant	11
Lincoln	Medicaid for Aged and Disabled	January	Eligibility Requirements Not Met	1
Lincoln	Medicaid for Aged and Disabled	January	Failed to Provide Information	2
Lincoln	Medicaid for Aged and Disabled	January	No Eligible Participants	1
Lincoln	Medicaid for Aged and Disabled	February	Case Review Not Completed	1
Lincoln	Medicaid for Aged and Disabled	February	Client Request	1
Lincoln	Medicaid for Aged and Disabled	February	Closed Retro MED	1
Lincoln	Medicaid for Aged and Disabled	February	Death of Participant	9
Lincoln	Medicaid for Aged and Disabled	February	Failed Living Arrangement	1
Lincoln	Medicaid for Aged and Disabled	February	Failed to Provide Information	3
Lincoln	Medicaid for Aged and Disabled	February	In Another Case	5
Lincoln	Medicaid for Aged and Disabled	February	No Eligible Participants	1
Lincoln	Medicaid for Aged and Disabled	February	Unable to Locate or Moved	1
Lincoln	Medicaid for Aged and Disabled	March	Applying For/Receiving Other Assistance	1
Lincoln	Medicaid for Aged and Disabled	March	Client Request	1
Lincoln	Medicaid for Aged and Disabled	March	Death of Participant	8
Lincoln	Medicaid for Aged and Disabled	March	Failed Living Arrangement	1
Lincoln	Medicaid for Aged and Disabled	March	Failed to Provide Information	6

Lincoln	Medicaid for Aged and Disabled	March	In Another Case	2
Lincoln	Medicaid for Aged and Disabled	March	No Eligible Participants	3
Lincoln	Medicaid for Aged and Disabled	March	Not Considered a Resident of NE	2
Lincoln	Medicaid for Aged and Disabled	March	Not Disabled Or Blind	1
Lincoln	Medicaid for Aged and Disabled	March	Other	1
Lincoln	Medicaid for Aged and Disabled	March	Unable to Locate or Moved	2
Logan	Medicaid for Aged and Disabled	March	Death of Participant	1
Madison	CHIP	January	Eligibility Period Ended	2
Madison	CHIP	February	Eligibility Period Ended	4
Madison	CHIP	March	Eligibility Period Ended	1
Madison	Medicaid -Children and Families	February	Eligibility Period Ended	1
Madison	Medicaid for Aged and Disabled	January	Case Review Not Completed	2
Madison	Medicaid for Aged and Disabled	January	Closed Retro MED	1
Madison	Medicaid for Aged and Disabled	January	Death of Participant	10
Madison	Medicaid for Aged and Disabled	January	Eligibility Requirements Not Met	1
Madison	Medicaid for Aged and Disabled	January	Failed to Provide Information	4
Madison	Medicaid for Aged and Disabled	January	In Another Case	2
Madison	Medicaid for Aged and Disabled	January	Share of Cost Exceeds Need	1
Madison	Medicaid for Aged and Disabled	February	Case Review Not Completed	1
Madison	Medicaid for Aged and Disabled	February	Closed Retro MED	1
Madison	Medicaid for Aged and Disabled	February	Death of Participant	6
Madison	Medicaid for Aged and Disabled	February	Eligibility Requirements Not Met	1
Madison	Medicaid for Aged and Disabled	February	Failed to Provide Information	3
Madison	Medicaid for Aged and Disabled	February	In Another Case	1
Madison	Medicaid for Aged and Disabled	March	Case Review Not Completed	1
Madison	Medicaid for Aged and Disabled	March	Death of Participant	8
Madison	Medicaid for Aged and Disabled	March	Failed Living Arrangement	1
Madison	Medicaid for Aged and Disabled	March	Failed to Provide Information	2
Madison	Medicaid for Aged and Disabled	March	Share of Cost Exceeds Need	1
Madison	Medicaid for Aged and Disabled	March	Unable to Locate or Moved	2
Merrick	Medicaid -Children and Families	March	No Eligible Participants	1
Merrick	Medicaid for Aged and Disabled	January	Case Review Not Completed	2
Merrick	Medicaid for Aged and Disabled	January	Death of Participant	3
Merrick	Medicaid for Aged and Disabled	February	Case Review Not Completed	1
Merrick	Medicaid for Aged and Disabled	February	Death of Participant	4
Merrick	Medicaid for Aged and Disabled	February	Not Considered a Resident of NE	1
Merrick	Medicaid for Aged and Disabled	March	Death of Participant	2
Merrick	Medicaid for Aged and Disabled	March	Failed Living Arrangement	1
Merrick	Medicaid for Aged and Disabled	March	In Another Case	1
Morrill	CHIP	February	Eligibility Period Ended	1
Morrill	Medicaid for Aged and Disabled	January	Case Review Not Completed	1
Morrill	Medicaid for Aged and Disabled	January	Death of Participant	1
Morrill	Medicaid for Aged and Disabled	January	Failed to Provide Information	1
Morrill	Medicaid for Aged and Disabled	February	Case Review Not Completed	1
Morrill	Medicaid for Aged and Disabled	February	Death of Participant	3
Morrill	Medicaid for Aged and Disabled	March	Death of Participant	2
Morrill	Medicaid for Aged and Disabled	March	Not Disabled Or Blind	1

Nance	Medicaid for Aged and Disabled	January	Death of Participant	2
Nance	Medicaid for Aged and Disabled	February	Death of Participant	1
Nance	Medicaid for Aged and Disabled	February	In Another Case	1
Nemaha	Medicaid for Aged and Disabled	January	Case Review Not Completed	1
Nemaha	Medicaid for Aged and Disabled	January	Death of Participant	3
Nemaha	Medicaid for Aged and Disabled	January	Failed to Provide Information	1
Nemaha	Medicaid for Aged and Disabled	January	In Another Case	1
Nemaha	Medicaid for Aged and Disabled	January	Share of Cost Exceeds Need	1
Nemaha	Medicaid for Aged and Disabled	January	Unable to Locate or Moved	1
Nemaha	Medicaid for Aged and Disabled	February	Death of Participant	2
Nemaha	Medicaid for Aged and Disabled	March	Death of Participant	3
Nemaha	Medicaid for Aged and Disabled	March	Failed to Provide Information	1
Nemaha	Medicaid for Aged and Disabled	March	In Another Case	1
Nuckolls	Medicaid for Aged and Disabled	January	Closed Retro MED	1
Nuckolls	Medicaid for Aged and Disabled	January	Death of Participant	2
Nuckolls	Medicaid for Aged and Disabled	January	In Another Case	1
Nuckolls	Medicaid for Aged and Disabled	February	Case Review Not Completed	1
Nuckolls	Medicaid for Aged and Disabled	February	Death of Participant	5
Nuckolls	Medicaid for Aged and Disabled	February	Failed to Provide Information	1
Nuckolls	Medicaid for Aged and Disabled	February	In Another Case	1
Nuckolls	Medicaid for Aged and Disabled	March	Unable to Locate or Moved	1
Otoe	CHIP	February	Eligibility Period Ended	2
Otoe	Medicaid for Aged and Disabled	January	Case Review Not Completed	1
Otoe	Medicaid for Aged and Disabled	January	Closed Retro MED	2
Otoe	Medicaid for Aged and Disabled	January	Death of Participant	5
Otoe	Medicaid for Aged and Disabled	January	In Another Case	1
Otoe	Medicaid for Aged and Disabled	January	Unable to Locate or Moved	1
Otoe	Medicaid for Aged and Disabled	February	Closed Retro MED	1
Otoe	Medicaid for Aged and Disabled	February	Death of Participant	4
Otoe	Medicaid for Aged and Disabled	February	No Eligible Participants	1
Otoe	Medicaid for Aged and Disabled	February	Unable to Locate or Moved	1
Otoe	Medicaid for Aged and Disabled	March	Case Review Not Completed	1
Otoe	Medicaid for Aged and Disabled	March	Client Request	1
Otoe	Medicaid for Aged and Disabled	March	Closed Retro MED	2
Otoe	Medicaid for Aged and Disabled	March	Death of Participant	3
Otoe	Medicaid for Aged and Disabled	March	Failed to Provide Information	2
Otoe	Medicaid for Aged and Disabled	March	In Another Case	1
Otoe	Medicaid for Aged and Disabled	March	Not Considered a Resident of NE	1
Out-of-state	CHIP	January	Client Request	1
Out-of-state	CHIP	January	Not Considered a Resident of NE	1
Out-of-state	CHIP	February	Client Request	2
Out-of-state	CHIP	March	Eligibility Period Ended	1
Out-of-state	Medicaid for Aged and Disabled	January	Applying For/Receiving Other Assistance	1
Out-of-state	Medicaid for Aged and Disabled	January	Case Review Not Completed	1
Out-of-state	Medicaid for Aged and Disabled	January	Client Request	3
Out-of-state	Medicaid for Aged and Disabled	January	Eligibility Requirements Not Met	1
Out-of-state	Medicaid for Aged and Disabled	January	No Eligible Participants	1

Out-of-state	Medicaid for Aged and Disabled	January	Not Considered a Resident of NE	36
Out-of-state	Medicaid for Aged and Disabled	January	Unable to Locate or Moved	28
Out-of-state	Medicaid for Aged and Disabled	February	Case Review Not Completed	2
Out-of-state	Medicaid for Aged and Disabled	February	Client Request	4
Out-of-state	Medicaid for Aged and Disabled	February	Closed Retro MED	1
Out-of-state	Medicaid for Aged and Disabled	February	In Another Case	1
Out-of-state	Medicaid for Aged and Disabled	February	No Eligible Participants	1
Out-of-state	Medicaid for Aged and Disabled	February	Not Considered a Resident of NE	19
Out-of-state	Medicaid for Aged and Disabled	February	Unable to Locate or Moved	18
Out-of-state	Medicaid for Aged and Disabled	March	Case Review Not Completed	2
Out-of-state	Medicaid for Aged and Disabled	March	Client Request	8
Out-of-state	Medicaid for Aged and Disabled	March	Failed to Provide Information	3
Out-of-state	Medicaid for Aged and Disabled	March	In Another Case	1
Out-of-state	Medicaid for Aged and Disabled	March	Not Considered a Resident of NE	31
Out-of-state	Medicaid for Aged and Disabled	March	Other	1
Out-of-state	Medicaid for Aged and Disabled	March	Unable to Locate or Moved	30
Pawnee	Medicaid for Aged and Disabled	March	Eligibility Requirements Not Met	1
Perkins	Medicaid for Aged and Disabled	January	Applying For/Receiving Other Assistance	1
Perkins	Medicaid for Aged and Disabled	January	Death of Participant	1
Perkins	Medicaid for Aged and Disabled	February	Death of Participant	1
Perkins	Medicaid for Aged and Disabled	February	Not Considered a Resident of NE	1
Phelps	Medicaid for Aged and Disabled	January	Death of Participant	5
Phelps	Medicaid for Aged and Disabled	January	Share of Cost Exceeds Need	1
Phelps	Medicaid for Aged and Disabled	February	Death of Participant	4
Phelps	Medicaid for Aged and Disabled	February	No Eligible Participants	1
Phelps	Medicaid for Aged and Disabled	March	Death of Participant	4
Phelps	Medicaid for Aged and Disabled	March	Failed to Provide Information	1
Phelps	Medicaid for Aged and Disabled	March	No Eligible Participants	1
Pierce	Medicaid for Aged and Disabled	January	Applying For/Receiving Other Assistance	1
Pierce	Medicaid for Aged and Disabled	January	Case Review Not Completed	2
Pierce	Medicaid for Aged and Disabled	January	Client Request	1
Pierce	Medicaid for Aged and Disabled	January	Death of Participant	1
Pierce	Medicaid for Aged and Disabled	February	Death of Participant	2
Pierce	Medicaid for Aged and Disabled	February	No Eligible Participants	2
Pierce	Medicaid for Aged and Disabled	March	Death of Participant	1
Platte	CHIP	January	Eligibility Period Ended	3
Platte	CHIP	January	No Eligible Participants	1
Platte	CHIP	February	Eligibility Period Ended	3
Platte	CHIP	March	Eligibility Period Ended	1
Platte	CHIP	March	In Another Case	1
Platte	Medicaid -Children and Families	January	Eligibility Period Ended	1
Platte	Medicaid for Aged and Disabled	January	Case Review Not Completed	5
Platte	Medicaid for Aged and Disabled	January	Closed Retro MED	1
Platte	Medicaid for Aged and Disabled	January	Death of Participant	6
Platte	Medicaid for Aged and Disabled	January	Failed to Provide Information	1
Platte	Medicaid for Aged and Disabled	January	In Another Case	3
Platte	Medicaid for Aged and Disabled	January	Not Considered a Resident of NE	1

Platte	Medicaid for Aged and Disabled	January	Unable to Locate or Moved	2
Platte	Medicaid for Aged and Disabled	February	Case Review Not Completed	1
Platte	Medicaid for Aged and Disabled	February	Death of Participant	5
Platte	Medicaid for Aged and Disabled	February	Failed to Provide Information	1
Platte	Medicaid for Aged and Disabled	February	No Eligible Participants	1
Platte	Medicaid for Aged and Disabled	February	Share of Cost Exceeds Need	1
Platte	Medicaid for Aged and Disabled	February	Unable to Locate or Moved	1
Platte	Medicaid for Aged and Disabled	March	Closed Retro MED	1
Platte	Medicaid for Aged and Disabled	March	Death of Participant	3
Platte	Medicaid for Aged and Disabled	March	Failed to Provide Information	2
Platte	Medicaid for Aged and Disabled	March	Other	1
Polk	Medicaid for Aged and Disabled	January	Client Request	1
Polk	Medicaid for Aged and Disabled	January	Closed Retro MED	1
Polk	Medicaid for Aged and Disabled	January	Death of Participant	2
Polk	Medicaid for Aged and Disabled	January	Failed Living Arrangement	1
Polk	Medicaid for Aged and Disabled	January	No Eligible Participants	1
Polk	Medicaid for Aged and Disabled	February	Case Review Not Completed	1
Polk	Medicaid for Aged and Disabled	February	Death of Participant	1
Polk	Medicaid for Aged and Disabled	March	Case Review Not Completed	1
Polk	Medicaid for Aged and Disabled	March	Failed to Provide Information	1
Red Willow	Medicaid for Aged and Disabled	January	Client Request	1
Red Willow	Medicaid for Aged and Disabled	January	Death of Participant	3
Red Willow	Medicaid for Aged and Disabled	January	Failed Living Arrangement	1
Red Willow	Medicaid for Aged and Disabled	January	Failed to Provide Information	1
Red Willow	Medicaid for Aged and Disabled	February	Case Review Not Completed	1
Red Willow	Medicaid for Aged and Disabled	February	Closed Retro MED	2
Red Willow	Medicaid for Aged and Disabled	February	Death of Participant	3
Red Willow	Medicaid for Aged and Disabled	February	Eligibility Requirements Not Met	1
Red Willow	Medicaid for Aged and Disabled	March	Closed Retro MED	2
Red Willow	Medicaid for Aged and Disabled	March	Death of Participant	2
Red Willow	Medicaid for Aged and Disabled	March	Not Considered a Resident of NE	1
Red Willow	Medicaid for Aged and Disabled	March	Unable to Locate or Moved	2
Richardson	Medicaid for Aged and Disabled	January	Case Review Not Completed	1
Richardson	Medicaid for Aged and Disabled	January	Death of Participant	4
Richardson	Medicaid for Aged and Disabled	January	Failed to Provide Information	1
Richardson	Medicaid for Aged and Disabled	January	No Eligible Participants	3
Richardson	Medicaid for Aged and Disabled	February	Case Review Not Completed	2
Richardson	Medicaid for Aged and Disabled	February	Closed Retro MED	1
Richardson	Medicaid for Aged and Disabled	February	Death of Participant	4
Richardson	Medicaid for Aged and Disabled	February	Failed to Provide Information	2
Richardson	Medicaid for Aged and Disabled	February	In Another Case	1
Richardson	Medicaid for Aged and Disabled	February	No Eligible Participants	3
Richardson	Medicaid for Aged and Disabled	February	Share of Cost Exceeds Need	1
Richardson	Medicaid for Aged and Disabled	March	Closed Retro MED	2
Richardson	Medicaid for Aged and Disabled	March	Death of Participant	3
Richardson	Medicaid for Aged and Disabled	March	Failed to Provide Information	1
Richardson	Medicaid for Aged and Disabled	March	In Another Case	1

Rock	Medicaid for Aged and Disabled	January	Death of Participant	2
Rock	Medicaid for Aged and Disabled	March	Death of Participant	1
Saline	CHIP	January	Eligibility Requirements Not Met	1
Saline	CHIP	February	Eligibility Period Ended	1
Saline	CHIP	March	Eligibility Period Ended	2
Saline	Medicaid for Aged and Disabled	January	Case Review Not Completed	2
Saline	Medicaid for Aged and Disabled	January	Closed Retro MED	1
Saline	Medicaid for Aged and Disabled	January	Death of Participant	4
Saline	Medicaid for Aged and Disabled	January	Failed to Provide Information	1
Saline	Medicaid for Aged and Disabled	January	Unable to Locate or Moved	1
Saline	Medicaid for Aged and Disabled	February	Case Review Not Completed	1
Saline	Medicaid for Aged and Disabled	February	Closed Retro MED	1
Saline	Medicaid for Aged and Disabled	February	Death of Participant	5
Saline	Medicaid for Aged and Disabled	February	Eligibility Requirements Not Met	1
Saline	Medicaid for Aged and Disabled	March	Case Review Not Completed	2
Saline	Medicaid for Aged and Disabled	March	Death of Participant	4
Saline	Medicaid for Aged and Disabled	March	Not Disabled Or Blind	1
Sarpy	CHIP	January	Eligibility Period Ended	4
Sarpy	CHIP	January	In Another Case	1
Sarpy	CHIP	February	Eligibility Period Ended	8
Sarpy	CHIP	March	Eligibility Period Ended	3
Sarpy	Medicaid -Children and Families	January		1
Sarpy	Medicaid -Children and Families	January	Failed to Provide Information	1
Sarpy	Medicaid -Children and Families	January	No Eligible Participants	2
Sarpy	Medicaid -Children and Families	March	Eligibility Period Ended	1
Sarpy	Medicaid -Children and Families	March	No Eligible Participants	3
Sarpy	Medicaid for Aged and Disabled	January	Case Review Not Completed	8
Sarpy	Medicaid for Aged and Disabled	January	Closed Retro MED	7
Sarpy	Medicaid for Aged and Disabled	January	Death of Participant	12
Sarpy	Medicaid for Aged and Disabled	January	Failed to Provide Information	2
Sarpy	Medicaid for Aged and Disabled	January	In Another Case	4
Sarpy	Medicaid for Aged and Disabled	January	No Eligible Participants	1
Sarpy	Medicaid for Aged and Disabled	January	Not Considered a Resident of NE	1
Sarpy	Medicaid for Aged and Disabled	January	Share of Cost Exceeds Need	2
Sarpy	Medicaid for Aged and Disabled	January	Unable to Locate or Moved	6
Sarpy	Medicaid for Aged and Disabled	February	Case Review Not Completed	8
Sarpy	Medicaid for Aged and Disabled	February	Client Request	1
Sarpy	Medicaid for Aged and Disabled	February	Closed Retro MED	3
Sarpy	Medicaid for Aged and Disabled	February	Death of Participant	10
Sarpy	Medicaid for Aged and Disabled	February	Failed to Provide Information	3
Sarpy	Medicaid for Aged and Disabled	February	In Another Case	1
Sarpy	Medicaid for Aged and Disabled	February	No Eligible Participants	2
Sarpy	Medicaid for Aged and Disabled	February	Share of Cost Exceeds Need	1
Sarpy	Medicaid for Aged and Disabled	February	Unable to Locate or Moved	1
Sarpy	Medicaid for Aged and Disabled	March	Case Review Not Completed	10
Sarpy	Medicaid for Aged and Disabled	March	Client Request	1
Sarpy	Medicaid for Aged and Disabled	March	Closed Retro MED	2

Sarpy	Medicaid for Aged and Disabled	March	Death of Participant	9
Sarpy	Medicaid for Aged and Disabled	March	Eligibility Requirements Not Met	2
Sarpy	Medicaid for Aged and Disabled	March	Failed Living Arrangement	1
Sarpy	Medicaid for Aged and Disabled	March	Failed to Provide Information	5
Sarpy	Medicaid for Aged and Disabled	March	In Another Case	1
Sarpy	Medicaid for Aged and Disabled	March	No Eligible Participants	1
Sarpy	Medicaid for Aged and Disabled	March	Not Considered a Resident of NE	1
Sarpy	Medicaid for Aged and Disabled	March	Not Disabled Or Blind	2
Sarpy	Medicaid for Aged and Disabled	March	Share of Cost Exceeds Need	1
Sarpy	Medicaid for Aged and Disabled	March	Unable to Locate or Moved	1
Saunders	Medicaid -Children and Families	March	Eligibility Period Ended	1
Saunders	Medicaid -Children and Families	March	No Eligible Participants	1
Saunders	Medicaid for Aged and Disabled	January	Case Review Not Completed	3
Saunders	Medicaid for Aged and Disabled	January	Client Request	1
Saunders	Medicaid for Aged and Disabled	January	Death of Participant	5
Saunders	Medicaid for Aged and Disabled	January	In Another Case	1
Saunders	Medicaid for Aged and Disabled	January	No Eligible Participants	2
Saunders	Medicaid for Aged and Disabled	January	Unable to Locate or Moved	1
Saunders	Medicaid for Aged and Disabled	February	Case Review Not Completed	1
Saunders	Medicaid for Aged and Disabled	February	Death of Participant	8
Saunders	Medicaid for Aged and Disabled	February	Not Considered a Resident of NE	1
Saunders	Medicaid for Aged and Disabled	February	Share of Cost Exceeds Need	1
Saunders	Medicaid for Aged and Disabled	March	Case Review Not Completed	1
Saunders	Medicaid for Aged and Disabled	March	Closed Retro MED	1
Saunders	Medicaid for Aged and Disabled	March	Death of Participant	7
Saunders	Medicaid for Aged and Disabled	March	In Another Case	3
Scotts Bluff	CHIP	February	Eligibility Period Ended	3
Scotts Bluff	CHIP	March	Eligibility Period Ended	2
Scotts Bluff	Medicaid -Children and Families	February	Eligibility Requirements Not Met	1
Scotts Bluff	Medicaid -Children and Families	March	Failed to Provide Information	1
Scotts Bluff	Medicaid for Aged and Disabled	January	Case Review Not Completed	4
Scotts Bluff	Medicaid for Aged and Disabled	January	Client Request	1
Scotts Bluff	Medicaid for Aged and Disabled	January	Death of Participant	12
Scotts Bluff	Medicaid for Aged and Disabled	January	Eligibility Requirements Not Met	2
Scotts Bluff	Medicaid for Aged and Disabled	January	Failed to Provide Information	3
Scotts Bluff	Medicaid for Aged and Disabled	January	In Another Case	1
Scotts Bluff	Medicaid for Aged and Disabled	January	Not Disabled Or Blind	1
Scotts Bluff	Medicaid for Aged and Disabled	February	Case Review Not Completed	2
Scotts Bluff	Medicaid for Aged and Disabled	February	Client Request	2
Scotts Bluff	Medicaid for Aged and Disabled	February	Closed Retro MED	1
Scotts Bluff	Medicaid for Aged and Disabled	February	Death of Participant	12
Scotts Bluff	Medicaid for Aged and Disabled	February	Eligibility Requirements Not Met	2
Scotts Bluff	Medicaid for Aged and Disabled	February	Failed Living Arrangement	1
Scotts Bluff	Medicaid for Aged and Disabled	February	Failed to Provide Information	5
Scotts Bluff	Medicaid for Aged and Disabled	February	In Another Case	3
Scotts Bluff	Medicaid for Aged and Disabled	February	Other	1
Scotts Bluff	Medicaid for Aged and Disabled	February	Unable to Locate or Moved	2

Scotts Bluff	Medicaid for Aged and Disabled	March	Case Review Not Completed	2
Scotts Bluff	Medicaid for Aged and Disabled	March	Death of Participant	12
Scotts Bluff	Medicaid for Aged and Disabled	March	Eligibility Requirements Not Met	1
Scotts Bluff	Medicaid for Aged and Disabled	March	Failed to Provide Information	2
Scotts Bluff	Medicaid for Aged and Disabled	March	In Another Case	1
Scotts Bluff	Medicaid for Aged and Disabled	March	No Eligible Participants	1
Scotts Bluff	Medicaid for Aged and Disabled	March	Unable to Locate or Moved	1
Seward	Medicaid for Aged and Disabled	January	Case Review Not Completed	1
Seward	Medicaid for Aged and Disabled	January	Death of Participant	5
Seward	Medicaid for Aged and Disabled	January	No Eligible Participants	2
Seward	Medicaid for Aged and Disabled	January	Unable to Locate or Moved	1
Seward	Medicaid for Aged and Disabled	February	Death of Participant	6
Seward	Medicaid for Aged and Disabled	February	Failed to Provide Information	1
Seward	Medicaid for Aged and Disabled	February	In Another Case	1
Seward	Medicaid for Aged and Disabled	March	Death of Participant	8
Seward	Medicaid for Aged and Disabled	March	Share of Cost Exceeds Need	1
Sheridan	Medicaid for Aged and Disabled	January	Case Review Not Completed	1
Sheridan	Medicaid for Aged and Disabled	January	Closed Retro MED	1
Sheridan	Medicaid for Aged and Disabled	January	Death of Participant	2
Sheridan	Medicaid for Aged and Disabled	January	Failed Living Arrangement	1
Sheridan	Medicaid for Aged and Disabled	January	No Eligible Participants	1
Sheridan	Medicaid for Aged and Disabled	February	Death of Participant	1
Sheridan	Medicaid for Aged and Disabled	March	Case Review Not Completed	1
Sheridan	Medicaid for Aged and Disabled	March	Death of Participant	1
Sherman	Medicaid for Aged and Disabled	January	Death of Participant	2
Sherman	Medicaid for Aged and Disabled	February	Death of Participant	3
Sherman	Medicaid for Aged and Disabled	March	Failed to Provide Information	1
Stanton	Medicaid for Aged and Disabled	January	Closed Retro MED	1
Stanton	Medicaid for Aged and Disabled	January	Death of Participant	1
Stanton	Medicaid for Aged and Disabled	February	Death of Participant	1
Stanton	Medicaid for Aged and Disabled	February	In Another Case	1
Stanton	Medicaid for Aged and Disabled	March	Death of Participant	1
Stanton	Medicaid for Aged and Disabled	March	Failed to Provide Information	1
Stanton	Medicaid for Aged and Disabled	March	No Eligible Participants	1
Thayer	CHIP	January	Eligibility Period Ended	1
Thayer	Medicaid for Aged and Disabled	January	Case Review Not Completed	1
Thayer	Medicaid for Aged and Disabled	January	Death of Participant	1
Thayer	Medicaid for Aged and Disabled	January	Failed to Provide Information	1
Thayer	Medicaid for Aged and Disabled	February	Case Review Not Completed	1
Thayer	Medicaid for Aged and Disabled	February	Death of Participant	4
Thayer	Medicaid for Aged and Disabled	February	Share of Cost Exceeds Need	1
Thayer	Medicaid for Aged and Disabled	March	Death of Participant	2
Thayer	Medicaid for Aged and Disabled	March	Failed to Provide Information	1
Thurston	Medicaid for Aged and Disabled	January	Death of Participant	3
Thurston	Medicaid for Aged and Disabled	January	Unable to Locate or Moved	1
Thurston	Medicaid for Aged and Disabled	February	Client Request	1
Thurston	Medicaid for Aged and Disabled	February	Closed Retro MED	1

Thurston	Medicaid for Aged and Disabled	February	Death of Participant	1
Thurston	Medicaid for Aged and Disabled	February	Failed to Provide Information	1
Thurston	Medicaid for Aged and Disabled	March	Death of Participant	3
Thurston	Medicaid for Aged and Disabled	March	In Another Case	1
Thurston	Medicaid for Aged and Disabled	March	Sanctioned	1
Thurston	Medicaid for Aged and Disabled	March	Unable to Locate or Moved	1
Valley	Medicaid for Aged and Disabled	January	Case Review Not Completed	1
Valley	Medicaid for Aged and Disabled	January	Failed to Provide Information	1
Valley	Medicaid for Aged and Disabled	February	Death of Participant	1
Valley	Medicaid for Aged and Disabled	March	Death of Participant	2
Valley	Medicaid for Aged and Disabled	March	Failed to Provide Information	1
Valley	Medicaid for Aged and Disabled	March	In Another Case	1
Valley	Medicaid for Aged and Disabled	March	Not Disabled Or Blind	1
Washington	CHIP	March	Eligibility Period Ended	1
Washington	Medicaid for Aged and Disabled	January	Applying For/Receiving Other Assistance	1
Washington	Medicaid for Aged and Disabled	January	Client Request	1
Washington	Medicaid for Aged and Disabled	January	Closed Retro MED	1
Washington	Medicaid for Aged and Disabled	January	Death of Participant	2
Washington	Medicaid for Aged and Disabled	February	Case Review Not Completed	1
Washington	Medicaid for Aged and Disabled	February	Death of Participant	8
Washington	Medicaid for Aged and Disabled	February	Share of Cost Exceeds Need	1
Washington	Medicaid for Aged and Disabled	March	Case Review Not Completed	1
Washington	Medicaid for Aged and Disabled	March	Death of Participant	3
Washington	Medicaid for Aged and Disabled	March	Not Considered a Resident of NE	1
Washington	Medicaid for Aged and Disabled	March	Share of Cost Exceeds Need	1
Wayne	CHIP	February	Eligibility Period Ended	1
Wayne	CHIP	March	Eligibility Period Ended	4
Wayne	Medicaid for Aged and Disabled	January	Death of Participant	1
Wayne	Medicaid for Aged and Disabled	January	No Eligible Participants	1
Wayne	Medicaid for Aged and Disabled	February	In Another Case	1
Webster	Medicaid for Aged and Disabled	January	Case Review Not Completed	1
Webster	Medicaid for Aged and Disabled	January	Closed Retro MED	1
Webster	Medicaid for Aged and Disabled	January	Death of Participant	1
Webster	Medicaid for Aged and Disabled	January	No Eligible Participants	1
Webster	Medicaid for Aged and Disabled	January	Other	1
Webster	Medicaid for Aged and Disabled	February	Death of Participant	3
York	CHIP	February	Eligibility Period Ended	2
York	CHIP	March	Eligibility Period Ended	1
York	Medicaid for Aged and Disabled	January	Case Review Not Completed	1
York	Medicaid for Aged and Disabled	January	Closed Retro MED	1
York	Medicaid for Aged and Disabled	January	Death of Participant	2
York	Medicaid for Aged and Disabled	January	No Eligible Participants	2
York	Medicaid for Aged and Disabled	January	Unable to Locate or Moved	1
York	Medicaid for Aged and Disabled	February	Case Review Not Completed	1
York	Medicaid for Aged and Disabled	February	Closed Retro MED	1
York	Medicaid for Aged and Disabled	February	Death of Participant	6
York	Medicaid for Aged and Disabled	February	Share of Cost Exceeds Need	1

York	Medicaid for Aged and Disabled	March	Case Review Not Completed	1
York	Medicaid for Aged and Disabled	March	Death of Participant	2
York	Medicaid for Aged and Disabled	March	Not Considered a Resident of NE	1
State	CHIP	January	Client Request	1
State	CHIP	January	Creditable Coverage	1
State	CHIP	January	Death of Participant	2
State	CHIP	January	Eligibility Period Ended	80
State	CHIP	January	Eligibility Requirements Not Met	2
State	CHIP	January	In Another Case	5
State	CHIP	January	No Eligible Participants	2
State	CHIP	January	Not Considered a Resident of NE	1
State	CHIP	January	Other	5
State	CHIP	January	Unable to Locate or Moved	2
State	CHIP	February	Client Request	2
State	CHIP	February	Death of Participant	1
State	CHIP	February	Eligibility Period Ended	100
State	CHIP	February	Eligibility Requirements Not Met	2
State	CHIP	February	In Another Case	2
State	CHIP	February	Other	1
State	CHIP	March	Death of Participant	5
State	CHIP	March	Eligibility Period Ended	101
State	CHIP	March	Eligibility Requirements Not Met	1
State	CHIP	March	Failed to Provide Information	1
State	CHIP	March	In Another Case	3
State	CHIP	March	Income Exceeds Standards	1
State	CHIP	March	Not Considered a Resident of NE	1
State	Medicaid -Children and Families	January		1
State	Medicaid -Children and Families	January	Eligibility Period Ended	2
State	Medicaid -Children and Families	January	Failed to Provide Information	9
State	Medicaid -Children and Families	January	Income Exceeds Standards	2
State	Medicaid -Children and Families	January	Ineligible Alien	1
State	Medicaid -Children and Families	January	No Eligible Participants	38
State	Medicaid -Children and Families	January	Other	3
State	Medicaid -Children and Families	January	Over Income - MAGI Gap Failure	1
State	Medicaid -Children and Families	January	System Generated	1
State	Medicaid -Children and Families	February	Eligibility Period Ended	4
State	Medicaid -Children and Families	February	Eligibility Requirements Not Met	3
State	Medicaid -Children and Families	February	Failed to Provide Information	9
State	Medicaid -Children and Families	February	No Eligible Participants	26
State	Medicaid -Children and Families	February	Other	1
State	Medicaid -Children and Families	February	Unable to Locate or Moved	1
State	Medicaid -Children and Families	March	Eligibility Period Ended	5
State	Medicaid -Children and Families	March	Failed to Provide Information	10
State	Medicaid -Children and Families	March	In Another Case	1
State	Medicaid -Children and Families	March	Ineligible Alien	1
State	Medicaid -Children and Families	March	No Eligible Participants	29
State	Medicaid -Children and Families	March	Other	1

State	Medicaid -Children and Families	March	Over Income - MAGI Gap Failure	1
State	Medicaid for Aged and Disabled	January	Applying For/Receiving Other Assistance	11
State	Medicaid for Aged and Disabled	January	Case Review Not Completed	169
State	Medicaid for Aged and Disabled	January	Client Request	21
State	Medicaid for Aged and Disabled	January	Closed Retro MED	118
State	Medicaid for Aged and Disabled	January	Death of Participant	376
State	Medicaid for Aged and Disabled	January	Does Not Meet Age Requirement	1
State	Medicaid for Aged and Disabled	January	Eligibility Requirements Not Met	16
State	Medicaid for Aged and Disabled	January	Failed Living Arrangement	18
State	Medicaid for Aged and Disabled	January	Failed to Provide Information	77
State	Medicaid for Aged and Disabled	January	In Another Case	61
State	Medicaid for Aged and Disabled	January	Ineligible Alien	1
State	Medicaid for Aged and Disabled	January	No Eligible Participants	43
State	Medicaid for Aged and Disabled	January	Not Considered a Resident of NE	47
State	Medicaid for Aged and Disabled	January	Not Disabled Or Blind	7
State	Medicaid for Aged and Disabled	January	Other	7
State	Medicaid for Aged and Disabled	January	Sanctioned	1
State	Medicaid for Aged and Disabled	January	Share of Cost Exceeds Need	18
State	Medicaid for Aged and Disabled	January	Unable to Locate or Moved	87
State	Medicaid for Aged and Disabled	February	Applying For/Receiving Other Assistance	2
State	Medicaid for Aged and Disabled	February	Case Review Not Completed	78
State	Medicaid for Aged and Disabled	February	Client Request	20
State	Medicaid for Aged and Disabled	February	Closed Retro MED	71
State	Medicaid for Aged and Disabled	February	Death of Participant	409
State	Medicaid for Aged and Disabled	February	Death Spenddown Met	1
State	Medicaid for Aged and Disabled	February	Death Spenddown Not Met	1
State	Medicaid for Aged and Disabled	February	Does Not Meet Age Requirement	2
State	Medicaid for Aged and Disabled	February	Eligibility Requirements Not Met	20
State	Medicaid for Aged and Disabled	February	Failed Dependent Child	1
State	Medicaid for Aged and Disabled	February	Failed Living Arrangement	11
State	Medicaid for Aged and Disabled	February	Failed to Provide Information	70
State	Medicaid for Aged and Disabled	February	In Another Case	58
State	Medicaid for Aged and Disabled	February	No Eligible Participants	32
State	Medicaid for Aged and Disabled	February	Not Considered a Resident of NE	32
State	Medicaid for Aged and Disabled	February	Not Disabled Or Blind	5
State	Medicaid for Aged and Disabled	February	Other	11
State	Medicaid for Aged and Disabled	February	Sanctioned	1
State	Medicaid for Aged and Disabled	February	Share of Cost Exceeds Need	19
State	Medicaid for Aged and Disabled	February	Unable to Locate or Moved	54
State	Medicaid for Aged and Disabled	March	Applying For/Receiving Other Assistance	4
State	Medicaid for Aged and Disabled	March	Case Review Not Completed	110
State	Medicaid for Aged and Disabled	March	Client Request	20
State	Medicaid for Aged and Disabled	March	Closed Retro MED	39
State	Medicaid for Aged and Disabled	March	Death of Participant	326
State	Medicaid for Aged and Disabled	March	Eligibility Requirements Not Met	13
State	Medicaid for Aged and Disabled	March	Failed Living Arrangement	15
State	Medicaid for Aged and Disabled	March	Failed to Provide Information	111

State	Medicaid for Aged and Disabled	March	In Another Case	68
State	Medicaid for Aged and Disabled	March	Ineligible Alien	1
State	Medicaid for Aged and Disabled	March	No Eligible Participants	34
State	Medicaid for Aged and Disabled	March	Not Considered a Resident of NE	48
State	Medicaid for Aged and Disabled	March	Not Disabled Or Blind	10
State	Medicaid for Aged and Disabled	March	Other	12
State	Medicaid for Aged and Disabled	March	Sanctioned	3
State	Medicaid for Aged and Disabled	March	Share of Cost Exceeds Need	14
State	Medicaid for Aged and Disabled	March	Transfer / Deprivation of Resources After 2/8/2006	1
State	Medicaid for Aged and Disabled	March	Unable to Locate or Moved	76

Applications received January 01, 2015 to January 31, 2015

	# First Time Applicants	Percentage	# Applicants Re-applying	Percentage	County Totals
Adams	14	17.28%	67	82.72%	81
Antelope	0	0.00%	8	100.00%	8
Arthur	0	0.00%	3	100.00%	3
Banner	0	0.00%	1	100.00%	1
Blaine	0	0.00%	2	100.00%	2
Boone	1	8.33%	11	91.67%	12
Box Butte	3	13.04%	20	86.96%	23
Boyd	0	0.00%	2	100.00%	2
Brown	0	0.00%	9	100.00%	9
Buffalo	4	5.26%	72	94.74%	76
Burt	2	18.18%	9	81.82%	11
Butler	1	14.29%	6	85.71%	7
Cass	0	0.00%	44	100.00%	44
Cedar	2	22.22%	7	77.78%	9
Chase	1	33.33%	2	66.67%	3
Cherry	0	0.00%	7	100.00%	7
Cheyenne	1	11.11%	8	88.89%	9
Clay	0	0.00%	16	100.00%	16
Colfax	2	8.70%	21	91.30%	23
Cuming	4	28.57%	10	71.43%	14
Custer	1	3.23%	30	96.77%	31
Dakota	2	3.08%	63	96.92%	65
Dawes	1	8.33%	11	91.67%	12
Dawson	18	35.29%	33	64.71%	51
Deuel	0	0.00%	3	100.00%	3
Dixon	1	7.69%	12	92.31%	13
Dodge	14	19.44%	58	80.56%	72
Douglas	134	9.95%	1213	90.05%	1347
Dundy	0	0.00%	6	100.00%	6
Fillmore	0	0.00%	9	100.00%	9
Franklin	0	0.00%	7	100.00%	7
Frontier	0	0.00%	4	100.00%	4
Furnas	0	0.00%	4	100.00%	4
Gage	0	0.00%	41	100.00%	41
Garden	0	0.00%	5	100.00%	5
Garfield	0	0.00%	5	100.00%	5
Gosper	0	0.00%	1	100.00%	1
Grant	0	0.00%	4	100.00%	4
Greeley	0	0.00%	8	100.00%	8
Hall	14	9.09%	140	90.91%	154
Hamilton	4	21.05%	15	78.95%	19
Harlan	0	0.00%	6	100.00%	6
Hayes	0	0.00%	7	100.00%	7
Hitchcock	0	0.00%	5	100.00%	5
Holt	1	11.11%	8	88.89%	9
Hooker	1	25.00%	3	75.00%	4
Howard	4	36.36%	7	63.64%	11
Jefferson	2	13.33%	13	86.67%	15
Johnson	0	0.00%	3	100.00%	3
Kearney	2	11.76%	15	88.24%	17
Keith	0	0.00%	19	100.00%	19
Kimball	2	18.18%	9	81.82%	11
Knox	0	0.00%	13	100.00%	13
Lancaster	103	17.22%	495	82.78%	598
Lincoln	7	8.54%	75	91.46%	82
Madison	12	12.37%	85	87.63%	97
Merrick	0	0.00%	9	100.00%	9
Morrill	0	0.00%	1	100.00%	1
Nance	0	0.00%	2	100.00%	2
Nemaha	1	10.00%	9	90.00%	10
Nuckolls	1	33.33%	2	66.67%	3

Applications received January 01, 2015 to January 31, 2015

	# First Time Applicants	Percentage	# Applicants Re-applying	Percentage	County Totals
Otoe	6	21.43%	22	78.57%	28
Out-of-state	0	0.00%	7	100.00%	7
Pawnee	2	40.00%	3	60.00%	5
Perkins	3	75.00%	1	25.00%	4
Phelps	0	0.00%	11	100.00%	11
Pierce	0	0.00%	10	100.00%	10
Platte	9	15.25%	50	84.75%	59
Polk	4	50.00%	4	50.00%	8
Red Willow	2	9.52%	19	90.48%	21
Richardson	4	22.22%	14	77.78%	18
Rock	0	0.00%	2	100.00%	2
Saline	9	31.03%	20	68.97%	29
Sarpy	14	6.57%	199	93.43%	213
Saunders	3	5.88%	48	94.12%	51
Scotts Bluff	7	6.93%	94	93.07%	101
Seward	3	10.34%	26	89.66%	29
Sheridan	4	20.00%	16	80.00%	20
Sherman	2	33.33%	4	66.67%	6
Stanton	0	0.00%	8	100.00%	8
Thayer	0	0.00%	9	100.00%	9
Thomas	0	0.00%	1	100.00%	1
Thurston	5	8.77%	52	91.23%	57
Valley	0	0.00%	2	100.00%	2
Washington	4	15.38%	22	84.62%	26
Wayne	0	0.00%	8	100.00%	8
Webster	1	12.50%	7	87.50%	8
Wheeler	0	0.00%	1	100.00%	1
York	0	0.00%	12	100.00%	12

Report Totals: 442 11.34% 3455 88.66% 3897

Note: If a county is not listed, that indicates that no applications were received for the report month.

Applications received February 01, 2015 to February 28, 2015

	# First Time Applicants	Percentage	# Applicants Re-applying	Percentage	County Totals
Adams	6	9.52%	57	90.48%	63
Antelope	0	0.00%	2	100.00%	2
Arthur	0	0.00%	2	100.00%	2
Boone	3	75.00%	1	25.00%	4
Box Butte	1	4.00%	24	96.00%	25
Boyd	1	25.00%	3	75.00%	4
Brown	0	0.00%	4	100.00%	4
Buffalo	7	6.86%	95	93.14%	102
Burt	0	0.00%	19	100.00%	19
Butler	2	15.38%	11	84.62%	13
Cass	2	5.88%	32	94.12%	34
Cedar	0	0.00%	18	100.00%	18
Chase	2	13.33%	13	86.67%	15
Cherry	2	10.00%	18	90.00%	20
Cheyenne	0	0.00%	21	100.00%	21
Clay	0	0.00%	10	100.00%	10
Colfax	2	7.41%	25	92.59%	27
Cuming	0	0.00%	14	100.00%	14
Custer	2	8.00%	23	92.00%	25
Dakota	5	6.67%	70	93.33%	75
Dawes	1	12.50%	7	87.50%	8
Dawson	7	12.50%	49	87.50%	56
Deuel	1	20.00%	4	80.00%	5
Dixon	1	8.33%	11	91.67%	12
Dodge	8	10.13%	71	89.87%	79
Douglas	164	14.20%	991	85.80%	1155
Dundy	0	0.00%	6	100.00%	6
Fillmore	1	16.67%	5	83.33%	6
Franklin	0	0.00%	3	100.00%	3
Frontier	0	0.00%	8	100.00%	8
Furnas	3	17.65%	14	82.35%	17
Gage	2	4.08%	47	95.92%	49
Garden	0	0.00%	7	100.00%	7
Garfield	3	75.00%	1	25.00%	4
Gosper	0	0.00%	5	100.00%	5
Grant	1	100.00%	0	0.00%	1
Greeley	0	0.00%	3	100.00%	3
Hall	21	11.23%	166	88.77%	187
Hamilton	2	10.53%	17	89.47%	19
Harlan	0	0.00%	1	100.00%	1
Hitchcock	0	0.00%	4	100.00%	4
Holt	1	4.00%	24	96.00%	25
Howard	0	0.00%	3	100.00%	3
Jefferson	4	50.00%	4	50.00%	8
Johnson	1	33.33%	2	66.67%	3
Kearney	3	33.33%	6	66.67%	9
Keith	5	22.73%	17	77.27%	22
Kimball	3	30.00%	7	70.00%	10
Knox	0	0.00%	19	100.00%	19
Lancaster	77	16.56%	388	83.44%	465
Lincoln	7	8.43%	76	91.57%	83
Madison	7	8.86%	72	91.14%	79
Merrick	0	0.00%	8	100.00%	8
Morrill	1	7.14%	13	92.86%	14
Nance	0	0.00%	7	100.00%	7
Nemaha	0	0.00%	4	100.00%	4
Otoe	2	5.71%	33	94.29%	35
Out-of-state	0	0.00%	4	100.00%	4
Pawnee	0	0.00%	6	100.00%	6
Perkins	0	0.00%	3	100.00%	3
Phelps	1	8.33%	11	91.67%	12

Applications received February 01, 2015 to February 28, 2015

	# First Time Applicants	Percentage	# Applicants Re-applying	Percentage	County Totals
Pierce	0	0.00%	9	100.00%	9
Platte	6	12.00%	44	88.00%	50
Polk	0	0.00%	9	100.00%	9
Red Willow	5	19.23%	21	80.77%	26
Richardson	1	7.14%	13	92.86%	14
Saline	2	10.53%	17	89.47%	19
Sarpy	13	7.07%	171	92.93%	184
Saunders	3	9.68%	28	90.32%	31
Scotts Bluff	14	11.86%	104	88.14%	118
Seward	1	3.45%	28	96.55%	29
Sheridan	0	0.00%	1	100.00%	1
Sherman	0	0.00%	5	100.00%	5
Thayer	5	50.00%	5	50.00%	10
Thomas	1	50.00%	1	50.00%	2
Thurston	0	0.00%	38	100.00%	38
Valley	0	0.00%	8	100.00%	8
Washington	1	6.25%	15	93.75%	16
Wayne	1	11.11%	8	88.89%	9
Webster	3	37.50%	5	62.50%	8
Wheeler	0	0.00%	6	100.00%	6
York	4	21.05%	15	78.95%	19
Report Totals:	422	11.85%	3140	88.15%	3562

Note: If a county is not listed, that indicates that no applications were received for the report month.

Applications received March 01, 2015 to March 31, 2015

	# First Time Applicants	Percentage	# Applicants Re-applying	Percentage	County Totals
Adams	8	8.00%	92	92.00%	100
Antelope	0	0.00%	17	100.00%	17
Banner	0	0.00%	1	100.00%	1
Boone	1	25.00%	3	75.00%	4
Box Butte	0	0.00%	28	100.00%	28
Boyd	0	0.00%	4	100.00%	4
Brown	0	0.00%	3	100.00%	3
Buffalo	10	8.13%	113	91.87%	123
Burt	1	25.00%	3	75.00%	4
Butler	0	0.00%	15	100.00%	15
Cass	5	14.71%	29	85.29%	34
Cedar	1	8.33%	11	91.67%	12
Chase	4	80.00%	1	20.00%	5
Cherry	0	0.00%	13	100.00%	13
Cheyenne	7	46.67%	8	53.33%	15
Clay	1	6.25%	15	93.75%	16
Colfax	14	23.73%	45	76.27%	59
Cuming	0	0.00%	7	100.00%	7
Custer	3	14.29%	18	85.71%	21
Dakota	19	19.39%	79	80.61%	98
Dawes	1	7.14%	13	92.86%	14
Dawson	9	11.11%	72	88.89%	81
Deuel	2	28.57%	5	71.43%	7
Dixon	0	0.00%	5	100.00%	5
Dodge	7	7.69%	84	92.31%	91
Douglas	230	13.14%	1520	86.86%	1750
Dundy	1	9.09%	10	90.91%	11
Fillmore	0	0.00%	7	100.00%	7
Franklin	0	0.00%	4	100.00%	4
Frontier	4	80.00%	1	20.00%	5
Furnas	4	22.22%	14	77.78%	18
Gage	4	9.52%	38	90.48%	42
Garden	1	33.33%	2	66.67%	3
Garfield	0	0.00%	3	100.00%	3
Gosper	0	0.00%	4	100.00%	4
Grant	0	0.00%	3	100.00%	3
Greeley	0	0.00%	4	100.00%	4
Hall	39	16.53%	197	83.47%	236
Hamilton	0	0.00%	13	100.00%	13
Harlan	1	33.33%	2	66.67%	3
Hitchcock	1	20.00%	4	80.00%	5
Holt	1	6.67%	14	93.33%	15
Howard	2	20.00%	8	80.00%	10
Jefferson	1	2.56%	38	97.44%	39
Johnson	0	0.00%	20	100.00%	20
Kearney	2	16.67%	10	83.33%	12
Keith	5	16.67%	25	83.33%	30
Kimball	0	0.00%	10	100.00%	10
Knox	2	10.53%	17	89.47%	19
Lancaster	93	13.96%	573	86.04%	666
Lincoln	7	6.54%	100	93.46%	107
Logan	0	0.00%	9	100.00%	9
Madison	5	4.17%	115	95.83%	120
Merrick	3	14.29%	18	85.71%	21
Morrill	0	0.00%	12	100.00%	12
Nance	0	0.00%	2	100.00%	2
Nemaha	2	28.57%	5	71.43%	7
Nuckolls	0	0.00%	4	100.00%	4
Otoe	3	10.71%	25	89.29%	28
Out-of-state	0	0.00%	4	100.00%	4
Pawnee	0	0.00%	2	100.00%	2

Applications received March 01, 2015 to March 31, 2015

	# First Time Applicants	Percentage	# Applicants Re-applying	Percentage	County Totals
Perkins	0	0.00%	2	100.00%	2
Phelps	1	10.00%	9	90.00%	10
Pierce	0	0.00%	5	100.00%	5
Platte	18	20.22%	71	79.78%	89
Polk	0	0.00%	12	100.00%	12
Red Willow	0	0.00%	30	100.00%	30
Richardson	1	2.86%	34	97.14%	35
Saline	5	17.24%	24	82.76%	29
Sarpy	42	15.85%	223	84.15%	265
Saunders	7	20.00%	28	80.00%	35
Scotts Bluff	16	12.60%	111	87.40%	127
Seward	6	22.22%	21	77.78%	27
Sheridan	1	6.25%	15	93.75%	16
Sherman	0	0.00%	6	100.00%	6
Sioux	0	0.00%	2	100.00%	2
Stanton	0	0.00%	1	100.00%	1
Thayer	1	7.69%	12	92.31%	13
Thurston	2	3.57%	54	96.43%	56
Valley	0	0.00%	2	100.00%	2
Washington	6	16.22%	31	83.78%	37
Wayne	10	28.57%	25	71.43%	35
Webster	0	0.00%	6	100.00%	6
York	4	12.50%	28	87.50%	32
Report Totals:	624	12.74%	4273	87.26%	4897

Note: If a county is not listed, that indicates that no applications were received for the report month.

County	Number of Persons Closed effective 12/01/2014	Number of Persons who Re-Applied within 30 days		Number of Persons who Re-Applied within 60 days	
			Percentage		Percentage
<u>Adams</u>					
MEDICAID	219	33	15.07%	15	6.85%
Total	219	33	15.07%	15	6.85%
<u>Antelope</u>					
MEDICAID	12	2	16.67%	0	0.00%
Total	12	2	16.67%	0	0.00%
<u>Boone</u>					
MEDICAID	28	2	7.14%	1	3.57%
Total	28	2	7.14%	1	3.57%
<u>Box Butte</u>					
MEDICAID	89	23	25.84%	3	3.37%
Total	89	23	25.84%	3	3.37%
<u>Boyd</u>					
MEDICAID	6	0	0.00%	0	0.00%
Total	6	0	0.00%	0	0.00%
<u>Brown</u>					
MEDICAID	12	1	8.33%	1	8.33%
Total	12	1	8.33%	1	8.33%
<u>Buffalo</u>					
MEDICAID	331	60	18.13%	31	9.37%
Total	331	60	18.13%	31	9.37%
<u>Burt</u>					
MEDICAID	40	6	15.00%	1	2.50%
Total	40	6	15.00%	1	2.50%
<u>Butler</u>					
MEDICAID	52	8	15.38%	5	9.62%
Total	52	8	15.38%	5	9.62%
<u>Cass</u>					
MEDICAID	115	10	8.70%	12	10.43%
Total	115	10	8.70%	12	10.43%
<u>Cedar</u>					
MEDICAID	20	4	20.00%	0	0.00%
Total	20	4	20.00%	0	0.00%
<u>Chase</u>					
MEDICAID	21	2	9.52%	7	33.33%
Total	21	2	9.52%	7	33.33%
<u>Cherry</u>					
MEDICAID	33	4	12.12%	3	9.09%
Total	33	4	12.12%	3	9.09%
<u>Cheyenne</u>					
MEDICAID	45	5	11.11%	9	20.00%
Total	45	5	11.11%	9	20.00%
<u>Clay</u>					
MEDICAID	28	11	39.29%	1	3.57%
Total	28	11	39.29%	1	3.57%
<u>Colfax</u>					
MEDICAID	118	17	14.41%	8	6.78%
599 CHIP	5	0	0.00%	0	0.00%
Total	123	17	13.82%	8	6.50%
<u>Cuming</u>					
MEDICAID	64	9	14.06%	12	18.75%
599 CHIP	3	0	0.00%	0	0.00%
Total	67	9	13.43%	12	17.91%

County	Number of Persons Closed effective 12/01/2014	Number of Persons who Re-Applied within 30 days		Number of Persons who Re-Applied within 60 days	
			Percentage		Percentage
<u>Custer</u>					
MEDICAID	75	6	8.00%	8	10.67%
599 CHIP	2	0	0.00%	0	0.00%
Total	77	6	7.79%	8	10.39%
<u>Dakota</u>					
MEDICAID	222	21	9.46%	14	6.31%
599 CHIP	5	0	0.00%	1	20.00%
Total	227	21	9.25%	15	6.61%
<u>Dawes</u>					
MEDICAID	51	1	1.96%	6	11.76%
Total	51	1	1.96%	6	11.76%
<u>Dawson</u>					
MEDICAID	214	39	18.22%	23	10.75%
599 CHIP	3	0	0.00%	0	0.00%
Total	217	39	17.97%	23	10.60%
<u>Deuel</u>					
MEDICAID	8	1	12.50%	0	0.00%
Total	8	1	12.50%	0	0.00%
<u>Dixon</u>					
MEDICAID	22	1	4.55%	0	0.00%
Total	22	1	4.55%	0	0.00%
<u>Dodge</u>					
MEDICAID	321	46	14.33%	28	8.72%
599 CHIP	6	0	0.00%	0	0.00%
Total	327	46	14.07%	28	8.56%
<u>Douglas</u>					
MEDICAID	4092	733	17.91%	308	7.53%
599 CHIP	48	1	2.08%	1	2.08%
Total	4140	734	17.73%	309	7.46%
<u>Dundy</u>					
MEDICAID	11	10	90.91%	0	0.00%
Total	11	10	90.91%	0	0.00%
<u>Fillmore</u>					
MEDICAID	32	6	18.75%	0	0.00%
Total	32	6	18.75%	0	0.00%
<u>Franklin</u>					
MEDICAID	14	0	0.00%	0	0.00%
Total	14	0	0.00%	0	0.00%
<u>Frontier</u>					
MEDICAID	4	0	0.00%	0	0.00%
Total	4	0	0.00%	0	0.00%
<u>Furnas</u>					
MEDICAID	35	6	17.14%	0	0.00%
Total	35	6	17.14%	0	0.00%
<u>Gage</u>					
MEDICAID	166	38	22.89%	12	7.23%
Total	166	38	22.89%	12	7.23%
<u>Garden</u>					
MEDICAID	23	2	8.70%	3	13.04%
Total	23	2	8.70%	3	13.04%
<u>Garfield</u>					
MEDICAID	20	0	0.00%	2	10.00%
Total	20	0	0.00%	2	10.00%

County	Number of Persons Closed effective 12/01/2014	Number of Persons who Re-Applied within 30 days		Number of Persons who Re-Applied within 60 days	
			Percentage		Percentage
<u>Gosper</u>					
MEDICAID	14	4	28.57%	2	14.29%
Total	14	4	28.57%	2	14.29%
<u>Grant</u>					
MEDICAID	9	5	55.56%	0	0.00%
Total	9	5	55.56%	0	0.00%
<u>Greeley</u>					
MEDICAID	13	0	0.00%	0	0.00%
Total	13	0	0.00%	0	0.00%
<u>Hall</u>					
MEDICAID	599	149	24.87%	51	8.51%
599 CHIP	10	0	0.00%	0	0.00%
Total	609	149	24.47%	51	8.37%
<u>Hamilton</u>					
MEDICAID	33	3	9.09%	0	0.00%
Total	33	3	9.09%	0	0.00%
<u>Harlan</u>					
MEDICAID	26	0	0.00%	0	0.00%
Total	26	0	0.00%	0	0.00%
<u>Hayes</u>					
MEDICAID	9	2	22.22%	3	33.33%
Total	9	2	22.22%	3	33.33%
<u>Hitchcock</u>					
MEDICAID	4	0	0.00%	1	25.00%
Total	4	0	0.00%	1	25.00%
<u>Holt</u>					
MEDICAID	62	9	14.52%	0	0.00%
599 CHIP	1	0	0.00%	0	0.00%
Total	63	9	14.29%	0	0.00%
<u>Hooker</u>					
MEDICAID	4	0	0.00%	0	0.00%
Total	4	0	0.00%	0	0.00%
<u>Howard</u>					
MEDICAID	44	3	6.82%	8	18.18%
Total	44	3	6.82%	8	18.18%
<u>Jefferson</u>					
MEDICAID	67	4	5.97%	7	10.45%
Total	67	4	5.97%	7	10.45%
<u>Johnson</u>					
MEDICAID	19	6	31.58%	0	0.00%
Total	19	6	31.58%	0	0.00%
<u>Kearney</u>					
MEDICAID	27	0	0.00%	1	3.70%
599 CHIP	1	0	0.00%	0	0.00%
Total	28	0	0.00%	1	3.57%
<u>Keith</u>					
MEDICAID	51	4	7.84%	4	7.84%
599 CHIP	1	0	0.00%	0	0.00%
Total	52	4	7.69%	4	7.69%
<u>Keya Paha</u>					
MEDICAID	2	0	0.00%	0	0.00%
Total	2	0	0.00%	0	0.00%

County	Number of Persons Closed effective 12/01/2014	Number of Persons who Re-Applied within 30 days		Number of Persons who Re-Applied within 60 days	
			Percentage		Percentage
<u>Kimball</u>					
MEDICAID	<u>25</u>	<u>5</u>	<u>20.00%</u>	<u>0</u>	<u>0.00%</u>
Total	25	5	20.00%	0	0.00%
<u>Knox</u>					
MEDICAID	<u>66</u>	<u>5</u>	<u>7.58%</u>	<u>3</u>	<u>4.55%</u>
Total	66	5	7.58%	3	4.55%
<u>Lancaster</u>					
MEDICAID	1838	358	19.48%	119	6.47%
599 CHIP	<u>9</u>	<u>0</u>	<u>0.00%</u>	<u>0</u>	<u>0.00%</u>
Total	1847	358	19.38%	119	6.44%
<u>Lincoln</u>					
MEDICAID	<u>239</u>	<u>51</u>	<u>21.34%</u>	<u>8</u>	<u>3.35%</u>
Total	239	51	21.34%	8	3.35%
<u>Logan</u>					
MEDICAID	<u>1</u>	<u>0</u>	<u>0.00%</u>	<u>0</u>	<u>0.00%</u>
Total	1	0	0.00%	0	0.00%
<u>Loup</u>					
MEDICAID	<u>1</u>	<u>0</u>	<u>0.00%</u>	<u>0</u>	<u>0.00%</u>
Total	1	0	0.00%	0	0.00%
<u>McPherson</u>					
MEDICAID	<u>3</u>	<u>0</u>	<u>0.00%</u>	<u>0</u>	<u>0.00%</u>
Total	3	0	0.00%	0	0.00%
<u>Madison</u>					
MEDICAID	260	38	14.62%	20	7.69%
599 CHIP	<u>3</u>	<u>0</u>	<u>0.00%</u>	<u>0</u>	<u>0.00%</u>
Total	263	38	14.45%	20	7.60%
<u>Merrick</u>					
MEDICAID	<u>53</u>	<u>10</u>	<u>18.87%</u>	<u>1</u>	<u>1.89%</u>
Total	53	10	18.87%	1	1.89%
<u>Morrill</u>					
MEDICAID	<u>39</u>	<u>6</u>	<u>15.38%</u>	<u>3</u>	<u>7.69%</u>
Total	39	6	15.38%	3	7.69%
<u>Nance</u>					
MEDICAID	<u>28</u>	<u>7</u>	<u>25.00%</u>	<u>0</u>	<u>0.00%</u>
Total	28	7	25.00%	0	0.00%
<u>Nemaha</u>					
MEDICAID	<u>53</u>	<u>9</u>	<u>16.98%</u>	<u>3</u>	<u>5.66%</u>
Total	53	9	16.98%	3	5.66%
<u>Nuckolls</u>					
MEDICAID	<u>30</u>	<u>5</u>	<u>16.67%</u>	<u>0</u>	<u>0.00%</u>
Total	30	5	16.67%	0	0.00%
<u>Otoe</u>					
MEDICAID	<u>106</u>	<u>13</u>	<u>12.26%</u>	<u>9</u>	<u>8.49%</u>
Total	106	13	12.26%	9	8.49%
<u>Pawnee</u>					
MEDICAID	<u>13</u>	<u>5</u>	<u>38.46%</u>	<u>0</u>	<u>0.00%</u>
Total	13	5	38.46%	0	0.00%
<u>Perkins</u>					
MEDICAID	<u>10</u>	<u>0</u>	<u>0.00%</u>	<u>0</u>	<u>0.00%</u>
Total	10	0	0.00%	0	0.00%
<u>Phelps</u>					
MEDICAID	<u>41</u>	<u>4</u>	<u>9.76%</u>	<u>4</u>	<u>9.76%</u>
Total	41	4	9.76%	4	9.76%

County	Number of Persons Closed effective 12/01/2014	Number of Persons who Re-Applied within 30 days		Number of Persons who Re-Applied within 60 days	
			Percentage		Percentage
<u>Pierce</u>					
MEDICAID	30	3	10.00%	1	3.33%
Total	30	3	10.00%	1	3.33%
<u>Platte</u>					
MEDICAID	210	25	11.90%	13	6.19%
599 CHIP	6	0	0.00%	0	0.00%
Total	216	25	11.57%	13	6.02%
<u>Polk</u>					
MEDICAID	32	1	3.13%	0	0.00%
Total	32	1	3.13%	0	0.00%
<u>Red Willow</u>					
MEDICAID	73	19	26.03%	3	4.11%
599 CHIP	1	0	0.00%	0	0.00%
Total	74	19	25.68%	3	4.05%
<u>Richardson</u>					
MEDICAID	53	6	11.32%	8	15.09%
Total	53	6	11.32%	8	15.09%
<u>Rock</u>					
MEDICAID	6	1	16.67%	0	0.00%
Total	6	1	16.67%	0	0.00%
<u>Saline</u>					
MEDICAID	91	13	14.29%	11	12.09%
599 CHIP	2	0	0.00%	0	0.00%
Total	93	13	13.98%	11	11.83%
<u>Sarpy</u>					
MEDICAID	664	109	16.42%	39	5.87%
599 CHIP	7	0	0.00%	0	0.00%
Total	671	109	16.24%	39	5.81%
<u>Saunders</u>					
MEDICAID	121	30	24.79%	11	9.09%
Total	121	30	24.79%	11	9.09%
<u>Scotts Bluff</u>					
MEDICAID	381	77	20.21%	28	7.35%
599 CHIP	2	0	0.00%	0	0.00%
Total	383	77	20.10%	28	7.31%
<u>Seward</u>					
MEDICAID	32	4	12.50%	2	6.25%
Total	32	4	12.50%	2	6.25%
<u>Sheridan</u>					
MEDICAID	27	1	3.70%	9	33.33%
Total	27	1	3.70%	9	33.33%
<u>Sherman</u>					
MEDICAID	11	2	18.18%	0	0.00%
Total	11	2	18.18%	0	0.00%
<u>Stanton</u>					
MEDICAID	16	1	6.25%	0	0.00%
Total	16	1	6.25%	0	0.00%
<u>Thayer</u>					
MEDICAID	29	0	0.00%	2	6.90%
Total	29	0	0.00%	2	6.90%
<u>Thomas</u>					
MEDICAID	2	0	0.00%	0	0.00%
Total	2	0	0.00%	0	0.00%

County	Number of Persons Closed effective 12/01/2014	Number of Persons who Re-Applied within 30 days		Number of Persons who Re-Applied within 60 days	
			Percentage		Percentage
<u>Thurston</u>					
MEDICAID	102	7	6.86%	7	6.86%
Total	102	7	6.86%	7	6.86%
<u>Valley</u>					
MEDICAID	14	4	28.57%	0	0.00%
Total	14	4	28.57%	0	0.00%
<u>Washington</u>					
MEDICAID	78	17	21.79%	3	3.85%
Total	78	17	21.79%	3	3.85%
<u>Wayne</u>					
MEDICAID	49	6	12.24%	8	16.33%
599 CHIP	1	0	0.00%	0	0.00%
Total	50	6	12.00%	8	16.00%
<u>Webster</u>					
MEDICAID	18	0	0.00%	2	11.11%
Total	18	0	0.00%	2	11.11%
<u>Wheeler</u>					
MEDICAID	4	0	0.00%	0	0.00%
Total	4	0	0.00%	0	0.00%
<u>York</u>					
MEDICAID	74	16	21.62%	5	6.76%
Total	74	16	21.62%	5	6.76%
<u>Out-of-state</u>					
MEDICAID	479	24	5.01%	9	1.88%
Total	479	24	5.01%	9	1.88%
State Totals	13044	2179	16.70%	923	7.08%

Note: If a county had no individuals closed for 12/01/2014, the county will not appear on the list. The county may have had individuals who applied for programs within 60 days of 12/01/2014, however they are not considered re-applications for benefits which were closed as of 12/01/2014.

The "Number of Persons Closed Effective..." column provides a reflective count of the individuals who were involved in each type of program case. The entries under "Total" are not a true reflection of the number of individuals closed due to an individual's possible participation in multiple programs.

County	Number of Persons Closed effective 01/01/2015	Number of Persons who Re-Applied within 30 days		Number of Persons who Re-Applied within 60 days	
			Percentage		Percentage
<u>Adams</u>					
MEDICAID	239	35	14.64%	22	9.21%
599 CHIP	3	0	0.00%	1	33.33%
Total	242	35	14.46%	23	9.50%
<u>Antelope</u>					
MEDICAID	49	9	18.37%	4	8.16%
Total	49	9	18.37%	4	8.16%
<u>Banner</u>					
MEDICAID	4	0	0.00%	0	0.00%
Total	4	0	0.00%	0	0.00%
<u>Blaine</u>					
MEDICAID	2	0	0.00%	2	100.00%
Total	2	0	0.00%	2	100.00%
<u>Boone</u>					
MEDICAID	13	3	23.08%	0	0.00%
Total	13	3	23.08%	0	0.00%
<u>Box Butte</u>					
MEDICAID	99	16	16.16%	2	2.02%
Total	99	16	16.16%	2	2.02%
<u>Boyd</u>					
MEDICAID	12	5	41.67%	0	0.00%
Total	12	5	41.67%	0	0.00%
<u>Brown</u>					
MEDICAID	19	1	5.26%	3	15.79%
Total	19	1	5.26%	3	15.79%
<u>Buffalo</u>					
MEDICAID	312	55	17.63%	14	4.49%
599 CHIP	1	0	0.00%	0	0.00%
Total	313	55	17.57%	14	4.47%
<u>Burt</u>					
MEDICAID	38	6	15.79%	5	13.16%
Total	38	6	15.79%	5	13.16%
<u>Butler</u>					
MEDICAID	29	9	31.03%	0	0.00%
Total	29	9	31.03%	0	0.00%
<u>Cass</u>					
MEDICAID	147	32	21.77%	4	2.72%
599 CHIP	1	0	0.00%	0	0.00%
Total	148	32	21.62%	4	2.70%
<u>Cedar</u>					
MEDICAID	25	0	0.00%	9	36.00%
Total	25	0	0.00%	9	36.00%
<u>Chase</u>					
MEDICAID	14	1	7.14%	4	28.57%
Total	14	1	7.14%	4	28.57%
<u>Cherry</u>					
MEDICAID	30	3	10.00%	0	0.00%
Total	30	3	10.00%	0	0.00%
<u>Cheyenne</u>					
MEDICAID	61	2	3.28%	6	9.84%
Total	61	2	3.28%	6	9.84%

County	Number of Persons Closed effective 01/01/2015	Number of Persons who Re-Applied within 30 days		Number of Persons who Re-Applied within 60 days	
			Percentage		Percentage
<u>Clay</u>					
MEDICAID	40	5	12.50%	0	0.00%
Total	40	5	12.50%	0	0.00%
<u>Colfax</u>					
MEDICAID	95	14	14.74%	2	2.11%
599 CHIP	2	0	0.00%	0	0.00%
Total	97	14	14.43%	2	2.06%
<u>Cuming</u>					
MEDICAID	28	4	14.29%	0	0.00%
Total	28	4	14.29%	0	0.00%
<u>Custer</u>					
MEDICAID	60	9	15.00%	5	8.33%
Total	60	9	15.00%	5	8.33%
<u>Dakota</u>					
MEDICAID	185	33	17.84%	15	8.11%
Total	185	33	17.84%	15	8.11%
<u>Dawes</u>					
MEDICAID	55	12	21.82%	0	0.00%
Total	55	12	21.82%	0	0.00%
<u>Dawson</u>					
MEDICAID	219	30	13.70%	15	6.85%
599 CHIP	3	0	0.00%	0	0.00%
Total	222	30	13.51%	15	6.76%
<u>Deuel</u>					
MEDICAID	18	0	0.00%	2	11.11%
Total	18	0	0.00%	2	11.11%
<u>Dixon</u>					
MEDICAID	14	1	7.14%	0	0.00%
Total	14	1	7.14%	0	0.00%
<u>Dodge</u>					
MEDICAID	266	50	18.80%	34	12.78%
599 CHIP	5	0	0.00%	0	0.00%
Total	271	50	18.45%	34	12.55%
<u>Douglas</u>					
MEDICAID	4763	861	18.08%	322	6.76%
599 CHIP	49	0	0.00%	1	2.04%
Total	4812	861	17.89%	323	6.71%
<u>Dundy</u>					
MEDICAID	17	3	17.65%	3	17.65%
Total	17	3	17.65%	3	17.65%
<u>Fillmore</u>					
MEDICAID	30	10	33.33%	2	6.67%
Total	30	10	33.33%	2	6.67%
<u>Franklin</u>					
MEDICAID	28	3	10.71%	0	0.00%
Total	28	3	10.71%	0	0.00%
<u>Frontier</u>					
MEDICAID	10	2	20.00%	0	0.00%
Total	10	2	20.00%	0	0.00%
<u>Furnas</u>					
MEDICAID	32	6	18.75%	6	18.75%
Total	32	6	18.75%	6	18.75%

County	Number of Persons Closed effective 01/01/2015	Number of Persons who Re-Applied within 30 days		Number of Persons who Re-Applied within 60 days	
			Percentage		Percentage
<u>Gage</u>					
MEDICAID	171	25	14.62%	10	5.85%
Total	171	25	14.62%	10	5.85%
<u>Garden</u>					
MEDICAID	12	5	41.67%	0	0.00%
Total	12	5	41.67%	0	0.00%
<u>Garfield</u>					
MEDICAID	9	2	22.22%	0	0.00%
Total	9	2	22.22%	0	0.00%
<u>Gosper</u>					
MEDICAID	13	2	15.38%	0	0.00%
Total	13	2	15.38%	0	0.00%
<u>Grant</u>					
MEDICAID	6	0	0.00%	1	16.67%
Total	6	0	0.00%	1	16.67%
<u>Greeley</u>					
MEDICAID	11	0	0.00%	3	27.27%
Total	11	0	0.00%	3	27.27%
<u>Hall</u>					
MEDICAID	548	108	19.71%	33	6.02%
599 CHIP	15	0	0.00%	0	0.00%
Total	563	108	19.18%	33	5.86%
<u>Hamilton</u>					
MEDICAID	50	11	22.00%	2	4.00%
Total	50	11	22.00%	2	4.00%
<u>Harlan</u>					
MEDICAID	26	8	30.77%	1	3.85%
Total	26	8	30.77%	1	3.85%
<u>Hayes</u>					
MEDICAID	2	0	0.00%	0	0.00%
Total	2	0	0.00%	0	0.00%
<u>Hitchcock</u>					
MEDICAID	32	12	37.50%	0	0.00%
Total	32	12	37.50%	0	0.00%
<u>Holt</u>					
MEDICAID	53	12	22.64%	6	11.32%
599 CHIP	1	0	0.00%	0	0.00%
Total	54	12	22.22%	6	11.11%
<u>Hooker</u>					
MEDICAID	3	0	0.00%	0	0.00%
Total	3	0	0.00%	0	0.00%
<u>Howard</u>					
MEDICAID	27	9	33.33%	1	3.70%
Total	27	9	33.33%	1	3.70%
<u>Jefferson</u>					
MEDICAID	61	4	6.56%	0	0.00%
Total	61	4	6.56%	0	0.00%
<u>Johnson</u>					
MEDICAID	22	0	0.00%	1	4.55%
Total	22	0	0.00%	1	4.55%
<u>Kearney</u>					
MEDICAID	38	3	7.89%	2	5.26%
Total	38	3	7.89%	2	5.26%

County	Number of Persons Closed effective 01/01/2015	Number of Persons who Re-Applied within 30 days		Number of Persons who Re-Applied within 60 days	
			Percentage		Percentage
<u>Keith</u>					
MEDICAID	<u>58</u>	<u>15</u>	<u>25.86%</u>	<u>4</u>	<u>6.90%</u>
Total	58	15	25.86%	4	6.90%
<u>Keya Paha</u>					
MEDICAID	<u>7</u>	<u>3</u>	<u>42.86%</u>	<u>0</u>	<u>0.00%</u>
Total	7	3	42.86%	0	0.00%
<u>Kimball</u>					
MEDICAID	<u>9</u>	<u>1</u>	<u>11.11%</u>	<u>0</u>	<u>0.00%</u>
Total	9	1	11.11%	0	0.00%
<u>Knox</u>					
MEDICAID	<u>86</u>	<u>7</u>	<u>8.14%</u>	<u>10</u>	<u>11.63%</u>
Total	86	7	8.14%	10	11.63%
<u>Lancaster</u>					
MEDICAID	1906	341	17.89%	134	7.03%
599 CHIP	<u>7</u>	<u>0</u>	<u>0.00%</u>	<u>0</u>	<u>0.00%</u>
Total	1913	341	17.83%	134	7.00%
<u>Lincoln</u>					
MEDICAID	<u>220</u>	<u>47</u>	<u>21.36%</u>	<u>22</u>	<u>10.00%</u>
Total	220	47	21.36%	22	10.00%
<u>Logan</u>					
MEDICAID	<u>13</u>	<u>1</u>	<u>7.69%</u>	<u>2</u>	<u>15.38%</u>
Total	13	1	7.69%	2	15.38%
<u>Loup</u>					
MEDICAID	<u>1</u>	<u>0</u>	<u>0.00%</u>	<u>0</u>	<u>0.00%</u>
Total	1	0	0.00%	0	0.00%
<u>Madison</u>					
MEDICAID	285	51	17.89%	13	4.56%
599 CHIP	<u>2</u>	<u>0</u>	<u>0.00%</u>	<u>0</u>	<u>0.00%</u>
Total	287	51	17.77%	13	4.53%
<u>Merrick</u>					
MEDICAID	<u>23</u>	<u>4</u>	<u>17.39%</u>	<u>2</u>	<u>8.70%</u>
Total	23	4	17.39%	2	8.70%
<u>Morrill</u>					
MEDICAID	<u>53</u>	<u>7</u>	<u>13.21%</u>	<u>0</u>	<u>0.00%</u>
Total	53	7	13.21%	0	0.00%
<u>Nance</u>					
MEDICAID	<u>11</u>	<u>2</u>	<u>18.18%</u>	<u>0</u>	<u>0.00%</u>
Total	11	2	18.18%	0	0.00%
<u>Nemaha</u>					
MEDICAID	<u>62</u>	<u>1</u>	<u>1.61%</u>	<u>9</u>	<u>14.52%</u>
Total	62	1	1.61%	9	14.52%
<u>Nuckolls</u>					
MEDICAID	<u>19</u>	<u>7</u>	<u>36.84%</u>	<u>3</u>	<u>15.79%</u>
Total	19	7	36.84%	3	15.79%
<u>Otoe</u>					
MEDICAID	<u>94</u>	<u>12</u>	<u>12.77%</u>	<u>4</u>	<u>4.26%</u>
Total	94	12	12.77%	4	4.26%
<u>Pawnee</u>					
MEDICAID	<u>17</u>	<u>4</u>	<u>23.53%</u>	<u>0</u>	<u>0.00%</u>
Total	17	4	23.53%	0	0.00%
<u>Perkins</u>					
MEDICAID	<u>19</u>	<u>0</u>	<u>0.00%</u>	<u>0</u>	<u>0.00%</u>
Total	19	0	0.00%	0	0.00%

County	Number of Persons Closed effective 01/01/2015	Number of Persons who Re-Applied within 30 days		Number of Persons who Re-Applied within 60 days	
			Percentage		Percentage
<u>Phelps</u>					
MEDICAID	57	5	8.77%	2	3.51%
Total	57	5	8.77%	2	3.51%
<u>Pierce</u>					
MEDICAID	46	6	13.04%	4	8.70%
Total	46	6	13.04%	4	8.70%
<u>Platte</u>					
MEDICAID	186	17	9.14%	6	3.23%
599 CHIP	4	0	0.00%	0	0.00%
Total	190	17	8.95%	6	3.16%
<u>Polk</u>					
MEDICAID	23	0	0.00%	2	8.70%
Total	23	0	0.00%	2	8.70%
<u>Red Willow</u>					
MEDICAID	53	19	35.85%	5	9.43%
Total	53	19	35.85%	5	9.43%
<u>Richardson</u>					
MEDICAID	78	17	21.79%	5	6.41%
Total	78	17	21.79%	5	6.41%
<u>Rock</u>					
MEDICAID	7	5	71.43%	0	0.00%
Total	7	5	71.43%	0	0.00%
<u>Saline</u>					
MEDICAID	96	26	27.08%	0	0.00%
599 CHIP	1	0	0.00%	0	0.00%
Total	97	26	26.80%	0	0.00%
<u>Sarpy</u>					
MEDICAID	833	152	18.25%	38	4.56%
599 CHIP	6	0	0.00%	0	0.00%
Total	839	152	18.12%	38	4.53%
<u>Saunders</u>					
MEDICAID	117	16	13.68%	3	2.56%
Total	117	16	13.68%	3	2.56%
<u>Scotts Bluff</u>					
MEDICAID	294	53	18.03%	21	7.14%
599 CHIP	1	0	0.00%	1	100.00%
Total	295	53	17.97%	22	7.46%
<u>Seward</u>					
MEDICAID	67	14	20.90%	13	19.40%
Total	67	14	20.90%	13	19.40%
<u>Sheridan</u>					
MEDICAID	47	8	17.02%	1	2.13%
Total	47	8	17.02%	1	2.13%
<u>Sherman</u>					
MEDICAID	29	7	24.14%	6	20.69%
Total	29	7	24.14%	6	20.69%
<u>Sioux</u>					
MEDICAID	3	0	0.00%	0	0.00%
Total	3	0	0.00%	0	0.00%
<u>Stanton</u>					
MEDICAID	16	1	6.25%	1	6.25%
Total	16	1	6.25%	1	6.25%

County	Number of Persons Closed effective 01/01/2015	Number of Persons who Re-Applied within 30 days		Number of Persons who Re-Applied within 60 days	
			Percentage		Percentage
<u>Thayer</u>					
MEDICAID	18	2	11.11%	2	11.11%
599 CHIP	1	0	0.00%	0	0.00%
Total	19	2	10.53%	2	10.53%
<u>Thomas</u>					
MEDICAID	1	1	100.00%	0	0.00%
Total	1	1	100.00%	0	0.00%
<u>Thurston</u>					
MEDICAID	137	18	13.14%	3	2.19%
Total	137	18	13.14%	3	2.19%
<u>Valley</u>					
MEDICAID	38	4	10.53%	4	10.53%
Total	38	4	10.53%	4	10.53%
<u>Washington</u>					
MEDICAID	45	13	28.89%	4	8.89%
Total	45	13	28.89%	4	8.89%
<u>Wayne</u>					
MEDICAID	50	12	24.00%	3	6.00%
599 CHIP	1	0	0.00%	0	0.00%
Total	51	12	23.53%	3	5.88%
<u>Webster</u>					
MEDICAID	27	10	37.04%	3	11.11%
Total	27	10	37.04%	3	11.11%
<u>York</u>					
MEDICAID	72	13	18.06%	3	4.17%
599 CHIP	1	0	0.00%	0	0.00%
Total	73	13	17.81%	3	4.11%
<u>Out-of-state</u>					
MEDICAID	409	12	2.93%	3	0.73%
599 CHIP	2	0	0.00%	0	0.00%
Total	411	12	2.92%	3	0.73%
State Totals	13775	2355	17.10%	879	6.38%

Note: If a county had no individuals closed for 01/01/2015, the county will not appear on the list. The county may have had individuals who applied for programs within 60 days of 01/01/2015, however they are not considered re-applications for benefits which were closed as of 01/01/2015.

The "Number of Persons Closed Effective..." column provides a reflective count of the individuals who were involved in each type of program case. The entries under "Total" are not a true reflection of the number of individuals closed due to an individual's possible participation in multiple programs.

County	Number of Persons Closed effective 02/01/2015	Number of Persons who Re-Applied within 30 days		Number of Persons who Re-Applied within 60 days	
			Percentage		Percentage
<u>Adams</u>					
MEDICAID	190	21	11.05%	10	5.26%
599 CHIP	3	1	33.33%	0	0.00%
Total	193	22	11.40%	10	5.18%
<u>Antelope</u>					
MEDICAID	27	5	18.52%	0	0.00%
Total	27	5	18.52%	0	0.00%
<u>Arthur</u>					
MEDICAID	1	0	0.00%	0	0.00%
Total	1	0	0.00%	0	0.00%
<u>Banner</u>					
MEDICAID	2	1	50.00%	0	0.00%
Total	2	1	50.00%	0	0.00%
<u>Blaine</u>					
MEDICAID	1	0	0.00%	0	0.00%
Total	1	0	0.00%	0	0.00%
<u>Boone</u>					
MEDICAID	16	0	0.00%	0	0.00%
Total	16	0	0.00%	0	0.00%
<u>Box Butte</u>					
MEDICAID	76	16	21.05%	3	3.95%
Total	76	16	21.05%	3	3.95%
<u>Boyd</u>					
MEDICAID	6	0	0.00%	0	0.00%
Total	6	0	0.00%	0	0.00%
<u>Brown</u>					
MEDICAID	14	0	0.00%	1	7.14%
Total	14	0	0.00%	1	7.14%
<u>Buffalo</u>					
MEDICAID	251	37	14.74%	6	2.39%
599 CHIP	1	0	0.00%	0	0.00%
Total	252	37	14.68%	6	2.38%
<u>Burt</u>					
MEDICAID	33	15	45.45%	0	0.00%
Total	33	15	45.45%	0	0.00%
<u>Butler</u>					
MEDICAID	29	7	24.14%	1	3.45%
Total	29	7	24.14%	1	3.45%
<u>Cass</u>					
MEDICAID	114	16	14.04%	8	7.02%
Total	114	16	14.04%	8	7.02%
<u>Cedar</u>					
MEDICAID	37	6	16.22%	5	13.51%
Total	37	6	16.22%	5	13.51%
<u>Chase</u>					
MEDICAID	30	12	40.00%	0	0.00%
Total	30	12	40.00%	0	0.00%
<u>Cherry</u>					
MEDICAID	46	8	17.39%	2	4.35%
Total	46	8	17.39%	2	4.35%
<u>Cheyenne</u>					
MEDICAID	65	10	15.38%	2	3.08%
Total	65	10	15.38%	2	3.08%

County	Number of Persons Closed effective 02/01/2015	Number of Persons who Re-Applied within 30 days		Number of Persons who Re-Applied within 60 days	
			Percentage		Percentage
<u>Clay</u>					
MEDICAID	37	5	13.51%	3	8.11%
599 CHIP	1	0	0.00%	0	0.00%
Total	38	5	13.16%	3	7.89%
<u>Colfax</u>					
MEDICAID	88	9	10.23%	5	5.68%
599 CHIP	5	0	0.00%	0	0.00%
Total	93	9	9.68%	5	5.38%
<u>Cuming</u>					
MEDICAID	43	13	30.23%	0	0.00%
599 CHIP	1	0	0.00%	0	0.00%
Total	44	13	29.55%	0	0.00%
<u>Custer</u>					
MEDICAID	77	9	11.69%	8	10.39%
Total	77	9	11.69%	8	10.39%
<u>Dakota</u>					
MEDICAID	186	32	17.20%	16	8.60%
599 CHIP	3	0	0.00%	0	0.00%
Total	189	32	16.93%	16	8.47%
<u>Dawes</u>					
MEDICAID	49	3	6.12%	1	2.04%
599 CHIP	1	0	0.00%	0	0.00%
Total	50	3	6.00%	1	2.00%
<u>Dawson</u>					
MEDICAID	195	20	10.26%	16	8.21%
599 CHIP	4	0	0.00%	0	0.00%
Total	199	20	10.05%	16	8.04%
<u>Deuel</u>					
MEDICAID	14	0	0.00%	7	50.00%
Total	14	0	0.00%	7	50.00%
<u>Dixon</u>					
MEDICAID	25	5	20.00%	3	12.00%
Total	25	5	20.00%	3	12.00%
<u>Dodge</u>					
MEDICAID	276	47	17.03%	18	6.52%
599 CHIP	2	0	0.00%	0	0.00%
Total	278	47	16.91%	18	6.47%
<u>Douglas</u>					
MEDICAID	4081	726	17.79%	321	7.87%
599 CHIP	46	1	2.17%	1	2.17%
Total	4127	727	17.62%	322	7.80%
<u>Dundy</u>					
MEDICAID	7	2	28.57%	0	0.00%
Total	7	2	28.57%	0	0.00%
<u>Fillmore</u>					
MEDICAID	39	11	28.21%	0	0.00%
Total	39	11	28.21%	0	0.00%
<u>Franklin</u>					
MEDICAID	14	3	21.43%	3	21.43%
Total	14	3	21.43%	3	21.43%
<u>Frontier</u>					
MEDICAID	6	4	66.67%	0	0.00%
Total	6	4	66.67%	0	0.00%

County	Number of Persons Closed effective 02/01/2015	Number of Persons who Re-Applied within 30 days		Number of Persons who Re-Applied within 60 days	
			Percentage		Percentage
<u>Furnas</u>					
MEDICAID	17	5	29.41%	1	5.88%
Total	17	5	29.41%	1	5.88%
<u>Gage</u>					
MEDICAID	134	16	11.94%	9	6.72%
Total	134	16	11.94%	9	6.72%
<u>Garden</u>					
MEDICAID	21	3	14.29%	0	0.00%
Total	21	3	14.29%	0	0.00%
<u>Garfield</u>					
MEDICAID	7	0	0.00%	0	0.00%
Total	7	0	0.00%	0	0.00%
<u>Gosper</u>					
MEDICAID	17	5	29.41%	0	0.00%
Total	17	5	29.41%	0	0.00%
<u>Grant</u>					
MEDICAID	7	3	42.86%	0	0.00%
Total	7	3	42.86%	0	0.00%
<u>Greeley</u>					
MEDICAID	4	0	0.00%	0	0.00%
Total	4	0	0.00%	0	0.00%
<u>Hall</u>					
MEDICAID	483	84	17.39%	29	6.00%
599 CHIP	10	0	0.00%	0	0.00%
Total	493	84	17.04%	29	5.88%
<u>Hamilton</u>					
MEDICAID	39	7	17.95%	2	5.13%
Total	39	7	17.95%	2	5.13%
<u>Harlan</u>					
MEDICAID	13	1	7.69%	0	0.00%
Total	13	1	7.69%	0	0.00%
<u>Hitchcock</u>					
MEDICAID	12	3	25.00%	0	0.00%
Total	12	3	25.00%	0	0.00%
<u>Holt</u>					
MEDICAID	82	6	7.32%	1	1.22%
Total	82	6	7.32%	1	1.22%
<u>Hooker</u>					
MEDICAID	11	0	0.00%	3	27.27%
Total	11	0	0.00%	3	27.27%
<u>Howard</u>					
MEDICAID	20	3	15.00%	2	10.00%
Total	20	3	15.00%	2	10.00%
<u>Jefferson</u>					
MEDICAID	26	3	11.54%	0	0.00%
Total	26	3	11.54%	0	0.00%
<u>Johnson</u>					
MEDICAID	30	4	13.33%	4	13.33%
599 CHIP	1	0	0.00%	0	0.00%
Total	31	4	12.90%	4	12.90%
<u>Kearney</u>					
MEDICAID	25	3	12.00%	3	12.00%
Total	25	3	12.00%	3	12.00%

County	Number of Persons Closed effective 02/01/2015	Number of Persons who Re-Applied within 30 days		Number of Persons who Re-Applied within 60 days	
			Percentage		Percentage
<u>Keith</u>					
MEDICAID	<u>54</u>	<u>6</u>	<u>11.11%</u>	<u>2</u>	<u>3.70%</u>
Total	54	6	11.11%	2	3.70%
<u>Kimball</u>					
MEDICAID	<u>32</u>	<u>14</u>	<u>43.75%</u>	<u>2</u>	<u>6.25%</u>
Total	32	14	43.75%	2	6.25%
<u>Knox</u>					
MEDICAID	<u>51</u>	<u>8</u>	<u>15.69%</u>	<u>1</u>	<u>1.96%</u>
Total	51	8	15.69%	1	1.96%
<u>Lancaster</u>					
MEDICAID	1687	294	17.43%	122	7.23%
599 CHIP	<u>10</u>	<u>0</u>	<u>0.00%</u>	<u>0</u>	<u>0.00%</u>
Total	1697	294	17.32%	122	7.19%
<u>Lincoln</u>					
MEDICAID	<u>270</u>	<u>43</u>	<u>15.93%</u>	<u>26</u>	<u>9.63%</u>
Total	270	43	15.93%	26	9.63%
<u>Logan</u>					
MEDICAID	<u>6</u>	<u>0</u>	<u>0.00%</u>	<u>0</u>	<u>0.00%</u>
Total	6	0	0.00%	0	0.00%
<u>Loup</u>					
MEDICAID	<u>1</u>	<u>1</u>	<u>100.00%</u>	<u>0</u>	<u>0.00%</u>
Total	1	1	100.00%	0	0.00%
<u>Madison</u>					
MEDICAID	248	39	15.73%	9	3.63%
599 CHIP	<u>4</u>	<u>0</u>	<u>0.00%</u>	<u>0</u>	<u>0.00%</u>
Total	252	39	15.48%	9	3.57%
<u>Merrick</u>					
MEDICAID	<u>37</u>	<u>4</u>	<u>10.81%</u>	<u>10</u>	<u>27.03%</u>
Total	37	4	10.81%	10	27.03%
<u>Morrill</u>					
MEDICAID	28	4	14.29%	2	7.14%
599 CHIP	<u>1</u>	<u>0</u>	<u>0.00%</u>	<u>0</u>	<u>0.00%</u>
Total	29	4	13.79%	2	6.90%
<u>Nance</u>					
MEDICAID	<u>14</u>	<u>3</u>	<u>21.43%</u>	<u>0</u>	<u>0.00%</u>
Total	14	3	21.43%	0	0.00%
<u>Nemaha</u>					
MEDICAID	<u>42</u>	<u>1</u>	<u>2.38%</u>	<u>2</u>	<u>4.76%</u>
Total	42	1	2.38%	2	4.76%
<u>Nuckolls</u>					
MEDICAID	<u>29</u>	<u>0</u>	<u>0.00%</u>	<u>3</u>	<u>10.34%</u>
Total	29	0	0.00%	3	10.34%
<u>Otoe</u>					
MEDICAID	96	8	8.33%	0	0.00%
599 CHIP	<u>2</u>	<u>0</u>	<u>0.00%</u>	<u>0</u>	<u>0.00%</u>
Total	98	8	8.16%	0	0.00%
<u>Pawnee</u>					
MEDICAID	<u>12</u>	<u>0</u>	<u>0.00%</u>	<u>1</u>	<u>8.33%</u>
Total	12	0	0.00%	1	8.33%
<u>Perkins</u>					
MEDICAID	<u>11</u>	<u>6</u>	<u>54.55%</u>	<u>0</u>	<u>0.00%</u>
Total	11	6	54.55%	0	0.00%

County	Number of Persons Closed effective 02/01/2015	Number of Persons who Re-Applied within 30 days		Number of Persons who Re-Applied within 60 days	
			Percentage		Percentage
<u>Phelps</u>					
MEDICAID	38	11	28.95%	2	5.26%
Total	38	11	28.95%	2	5.26%
<u>Pierce</u>					
MEDICAID	36	2	5.56%	3	8.33%
Total	36	2	5.56%	3	8.33%
<u>Platte</u>					
MEDICAID	194	18	9.28%	15	7.73%
599 CHIP	3	0	0.00%	0	0.00%
Total	197	18	9.14%	15	7.61%
<u>Polk</u>					
MEDICAID	24	7	29.17%	0	0.00%
Total	24	7	29.17%	0	0.00%
<u>Red Willow</u>					
MEDICAID	73	18	24.66%	5	6.85%
Total	73	18	24.66%	5	6.85%
<u>Richardson</u>					
MEDICAID	56	12	21.43%	1	1.79%
Total	56	12	21.43%	1	1.79%
<u>Rock</u>					
MEDICAID	2	1	50.00%	0	0.00%
Total	2	1	50.00%	0	0.00%
<u>Saline</u>					
MEDICAID	89	21	23.60%	3	3.37%
599 CHIP	2	0	0.00%	0	0.00%
Total	91	21	23.08%	3	3.30%
<u>Sarpy</u>					
MEDICAID	678	75	11.06%	53	7.82%
599 CHIP	9	0	0.00%	0	0.00%
Total	687	75	10.92%	53	7.71%
<u>Saunders</u>					
MEDICAID	107	25	23.36%	5	4.67%
Total	107	25	23.36%	5	4.67%
<u>Scotts Bluff</u>					
MEDICAID	303	52	17.16%	36	11.88%
599 CHIP	3	0	0.00%	0	0.00%
Total	306	52	16.99%	36	11.76%
<u>Seward</u>					
MEDICAID	76	12	15.79%	1	1.32%
Total	76	12	15.79%	1	1.32%
<u>Sheridan</u>					
MEDICAID	26	0	0.00%	1	3.85%
Total	26	0	0.00%	1	3.85%
<u>Sherman</u>					
MEDICAID	13	7	53.85%	0	0.00%
Total	13	7	53.85%	0	0.00%
<u>Stanton</u>					
MEDICAID	21	1	4.76%	0	0.00%
Total	21	1	4.76%	0	0.00%
<u>Thayer</u>					
MEDICAID	29	1	3.45%	0	0.00%
Total	29	1	3.45%	0	0.00%

County	Number of Persons Closed effective 02/01/2015	Number of Persons who Re-Applied within 30 days		Number of Persons who Re-Applied within 60 days	
			Percentage		Percentage
<u>Thomas</u>					
MEDICAID	<u>2</u>	<u>0</u>	<u>0.00%</u>	<u>0</u>	<u>0.00%</u>
Total	2	0	0.00%	0	0.00%
<u>Thurston</u>					
MEDICAID	<u>100</u>	<u>22</u>	<u>22.00%</u>	<u>0</u>	<u>0.00%</u>
Total	100	22	22.00%	0	0.00%
<u>Valley</u>					
MEDICAID	<u>26</u>	<u>10</u>	<u>38.46%</u>	<u>0</u>	<u>0.00%</u>
Total	26	10	38.46%	0	0.00%
<u>Washington</u>					
MEDICAID	88	13	14.77%	7	7.95%
599 CHIP	<u>1</u>	<u>0</u>	<u>0.00%</u>	<u>0</u>	<u>0.00%</u>
Total	89	13	14.61%	7	7.87%
<u>Wayne</u>					
MEDICAID	37	4	10.81%	7	18.92%
599 CHIP	<u>1</u>	<u>0</u>	<u>0.00%</u>	<u>0</u>	<u>0.00%</u>
Total	38	4	10.53%	7	18.42%
<u>Webster</u>					
MEDICAID	<u>23</u>	<u>5</u>	<u>21.74%</u>	<u>0</u>	<u>0.00%</u>
Total	23	5	21.74%	0	0.00%
<u>Wheeler</u>					
MEDICAID	<u>1</u>	<u>0</u>	<u>0.00%</u>	<u>0</u>	<u>0.00%</u>
Total	1	0	0.00%	0	0.00%
<u>York</u>					
MEDICAID	96	9	9.38%	6	6.25%
599 CHIP	<u>2</u>	<u>0</u>	<u>0.00%</u>	<u>0</u>	<u>0.00%</u>
Total	98	9	9.18%	6	6.12%
<u>Out-of-state</u>					
MEDICAID	354	5	1.41%	0	0.00%
599 CHIP	<u>2</u>	<u>0</u>	<u>0.00%</u>	<u>0</u>	<u>0.00%</u>
Total	356	5	1.40%	0	0.00%
State Totals	12251	1953	15.94%	819	6.69%

Note: If a county had no individuals closed for 02/01/2015, the county will not appear on the list. The county may have had individuals who applied for programs within 60 days of 02/01/2015, however they are not considered re-applications for benefits which were closed as of 02/01/2015.

The "Number of Persons Closed Effective..." column provides a reflective count of the individuals who were involved in each type of program case. The entries under "Total" are not a true reflection of the number of individuals closed due to an individual's possible participation in multiple programs.

January 2015

	<u>Total Tasks</u>	<u>Average Days to Complete</u>
<u>Priority: High</u>		
CHANGE MANAGEMENT	2535	2.10
INTERVIEWING/PROCESSING	1	3.00
PROCESSING	2810	3.79
<u>Priority: None</u>		
CHANGE MANAGEMENT	22305	16.84
INTERVIEWING/PROCESSING	25	2.72
PROCESSING	26147	15.13
SUPERVISOR REVIEW	15	11.00
APP MGMT MEDICAID	124	0.62
January 2015	<hr/> 53962	<hr/> 14.59

February 2015

	<u>Total Tasks</u>	<u>Average Days to Complete</u>
<u>Priority: High</u>		
CHANGE MANAGEMENT	2538	1.38
PROCESSING	2456	2.93
<u>Priority: None</u>		
CHANGE MANAGEMENT	28892	20.21
INTERVIEWING/PROCESSING	15	7.53
PROCESSING	30162	14.29
SUPERVISOR REVIEW	10	6.80
LEAD SPECIFIC	1	0.00
APP MGMT ECON ASSIST	12	0.08
APP MGMT MEDICAID	97	0.35

February 2015

	64183	15.99
--	--------------	--------------

March 2015

	<u>Total Tasks</u>	<u>Average Days to Complete</u>
<u>Priority: High</u>		
CHANGE MANAGEMENT	2931	1.76
PROCESSING	3095	2.86
<u>Priority: None</u>		
CHANGE MANAGEMENT	36652	18.28
INTERVIEWING/PROCESSING	53	1.19
PROCESSING	32835	12.30
SUPERVISOR REVIEW	54	7.94
APP MGMT ECON ASSIST	1	12.00
APP MGMT MEDICAID	161	0.44

March 2015

	75782	14.36
--	-------	-------

Summary For Quarter Reported

	193927	14.96
--	--------	-------

Table 1. SOCIAL SERVICE WORKER/TRAINEE

	January 2015						February 2015						March 2015					
	Filled	# Filled	# Vacant	Total	Terms	Hires	Filled	# Filled	# Vacant	Total	Terms	Hires	Filled	# Filled	# Vacant	Total	Terms	Hires
	FTE	Positions	Positions	Positions			FTE	Positions	Positions	Positions			FTE	Positions	Positions	Positions		
25744600 MLTC LINCOLN CSC PAY HOME	81.75	84	4	88	1	3	82.25	84	4	88	1	1	82.50	84	4	88	0	2
25744400 MLTC LEXINGTON CSC PAY HOME	38.00	40	2	42	1	0	39.50	41	1	42	0	0	39.00	41	1	42	0	1
25744100 MLTC METRO OMAHA PAY HOME	66.00	66	2	68	1	1	64.00	64	3	67	1	0	63.00	63	4	67	1	1
25744200 MLTC METRO LINCOLN PAY HOME	27.00	27	0	27	0	0	25.00	25	3	28	0	0	27.00	27	2	29	0	0
25744500 MLTC RURAL PAY HOME	58.50	59	0	59	0	1	55.50	56	3	59	2	0	55.00	55	4	59	2	0
TOTAL	271.25	276	8	284	3	5	266.25	270	14	284	4	1	266.50	270	15	285	3	4

*All numbers exclude frozen positions

**Filled FTE, # Filled Positions, and # Vacant Positions from monthly FTE Reports (pulled from Workday)

†Terms and Hires from monthly Terms-Hires Report (pulled from Workday)

Table 2. SOCIAL SERVICE LEAD WORKER

	January 2015						February 2015						March 2015					
	Filled	# Filled	# Vacant	Total	Terms	Hires	Filled	# Filled	# Vacant	Total	Terms	Hires	Filled	# Filled	# Vacant	Total	Terms	Hires
	FTE	Positions	Positions	Positions			FTE	Positions	Positions	Positions			FTE	Positions	Positions	Positions		
25744600 MLTC LINCOLN CSC PAY HOME	10.00	10	0	10	0	0	10.00	10	0	10	0	0	10.00	10	0	10	0	0
25744400 MLTC LEXINGTON CSC PAY HOME	5.00	5	0	5	0	0	5.00	5	0	5	0	0	5.00	5	0	5	0	0
25744100 MLTC METRO OMAHA PAY HOME	7.00	7	0	7	0	0	7.00	7	0	7	0	0	7.00	7	0	7	0	0
25744200 MLTC METRO LINCOLN PAY HOME	3.00	3	0	3	0	0	3.00	3	0	3	0	0	2.00	2	1	3	0	0
25744500 MLTC RURAL PAY HOME	7.00	7	1	8	0	0	7.00	7	1	8	0	0	8.00	8	0	8	0	0
TOTAL	32.00	32	1	33	0	0	32.00	32	1	33	0	0	32.00	32	1	33	0	0

*All numbers exclude frozen positions

**Filled FTE, # Filled Positions, and # Vacant Positions from monthly FTE Reports (pulled from Workday)

†Terms and Hires from monthly Terms-Hires Report (pulled from Workday)