

January 15, 2015

Patrick O'Donnell, Clerk of the Legislature
State Capitol, Room 2018
P.O. Box 94604
Lincoln, NE 68509-4604

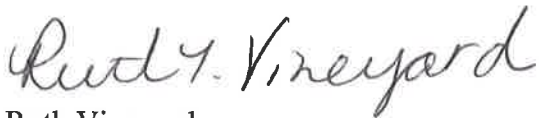
RE: ACCESSNebraska Quarterly Report

Dear Mr. O'Donnell,

In accordance with Legislative Bill 195 (2013) ACCESSNebraska Quarterly Reports, I have attached a copy of the most recent quarter from the Division of Medicaid and Long-Term Care. We are pleased to report improvement from the previous quarter.

The attached report covers the quarter from October through December 2014.

Respectfully,



Ruth Vineyard
Deputy Director
Medicaid and Long-Term Care
Department of Health and Human Services

**Department of Health and Human Services
Legislative Report
LB 195**

**ACCESSNebraska
Medicaid**

October – December 2014 Quarter

REPORT FOR: LEGISLATURE
REPORT DATE: JANUARY 27, 2015
LEGISLATIVE BILL: LB 195
COMMITTEE NAME: HEALTH AND HUMAN SERVICES COMMITTEE
CONTACT PERSON: RUTH VINEYARD, DEPUTY DIRECTOR
MEDICAID AND LONG-TERM CARE DIVISION

Element One: This report is used by the Children and Family Services Division and the Medicaid and Long-Term Care Division of the Nebraska Department of Health and Human Services. Some elements of this report, including element 1, pertain to the Children and Family Services side only. These elements are addressed in Children and Family Services reports and are not included here.

Element Two: Number of days in increments that it takes to process applications for Medicaid and Children's Health Insurance Program, separating the data for applicants not applying on the basis of disability from applicants applying on the basis of disability, overall and broken down by county.

See attached:

- Application Processing Medicaid for Children and Families
- Application Processing Medicaid for Aged and Disabled
- Application Processing Children's Health Insurance Program

Element Three: Reasons for benefit applications processing delays (department, client or third party) for all applications that are processed beyond federal and state timeliness in Aid to Dependent Children, Supplemental Nutrition Assistance Program, Aid to Aged, Blind and Disabled, Medicaid and Children's Health Insurance Program statewide, and Child Care Subsidy program, overall and broken down by county. This shall include the number of cases for each respective reason (department, client and third party).

Data began being collected July 14, 2014.

See attached:

- Application Processing Delays MLTC Programs

Element Four: The number of case closures in Medicaid, Children's Health Insurance Program, Aid to Dependent Children, Supplemental Nutrition Assistance Program, Aid to Aged Blind and Disabled, and Child Care subsidy program, and the reason for the closure statewide and overall and broken down by county.

See attached:

- Cases Closed by County Reason

Element Five: The number of case closures due to failure to recertify benefits, including timely providing of information, failing to perform a case review or failing to appear for an appointment, overall and broken down by county.

See attached:

- Cases Closed by County Reason

Element Six: Total number of first-time applicants for benefits categorized by state and county and by month.

See attached:

- October Applications
- November Applications
- December Applications

Element Seven: The percentage of applications that are re-applications, categorized by state and county and by month.

See attached:

- October Applications
- November Applications
- December Applications

Element Eight: The percentage of individuals whose cases closed who reapply for benefits within 30 days and 60 days after case closure, categorized by state and county, and by month.

Medicaid Programs are included in this report.
See attached:

- October percentage of people who had case closed who reapplied within 30 and 60 days
- November percentage of people who had case closed who reapplied within 30 and 60 days
- December percentage of people who had case closed who reapplied within 30 and 60 days.

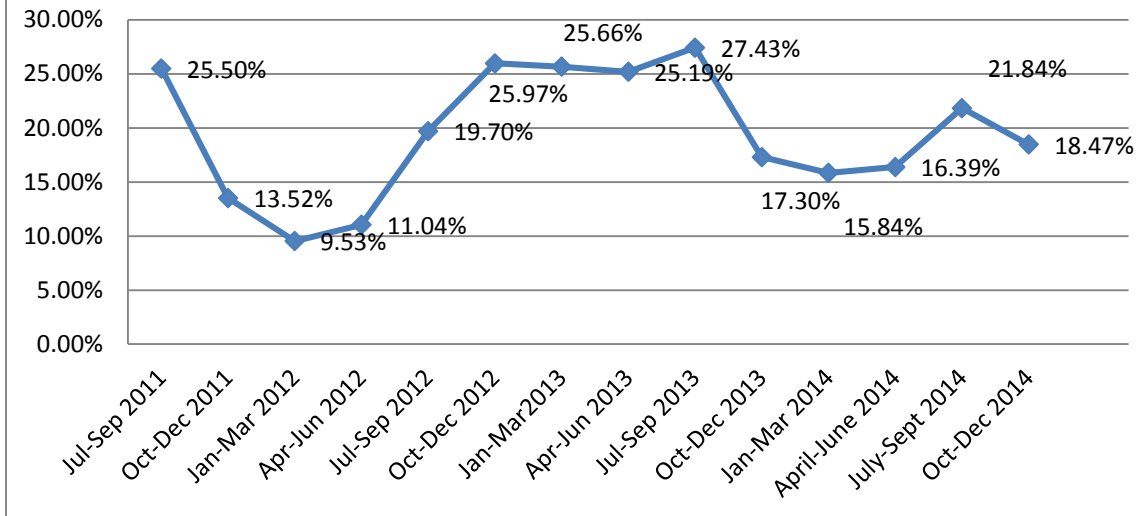
Element Nine: Average wait time for call center response. The average wait time starting from the time when the call is transferred to the customer service center to the time when the worker answers the call.

Average Call Wait				
	October	November	December	Quarter
Medicaid	3:44	4:13	3:43	3:52

Element Ten: The number of client call terminations (client hang ups) that occur prior to speaking with a staff member and the average length of time starting from the time when the call is transferred to the customer service center to the time when the caller terminates the call.

Call Terminations				
Medicaid	October	November	December	Quarter
Abandonment Rate	9.59%	10.50%	9.06%	9.67%
Number of Abandons	3294	2880	2916	9090
Average Time to Abandon	3:31	3:38	3:31	3:33

ACCESSNebraska Call Abandonment Rate By Quarter--All Programs



Element Eleven: average number of minutes per delivery system transaction or task based on type of transaction, including but not limited to, application management (new review, renewal), Interviewing (high and low priority), application processing (processing initial, processing daily, and processing ready), and change management.

Data regarding the number of minutes per delivery to process a task is not available. A report reflecting the number of days to complete a work task is attached. This is for the Medicaid Program Work Task Queue.

See attached:

- October 2014 to December 2014 Work Task Report

Element Twelve: The number of hours and the number of days when call center responses are at a maximum and clients receive a busy signal when calling.

The Office of the Chief Information Officer (OCIO) sends busy signal reports to the Medicaid Division of DHHS. The report reflects the date, time and location when a busy signal occurred; it can be assumed if the date and time is not listed that a busy signal did not occur. Windstream submits the Lincoln local number and the State-wide toll free number report. Century Link submits the Omaha local number report. Medicaid has 46 lines available in each location.

A review of the October - December phone traffic reports indicate busy signals occurred on three days in the last quarter. The Omaha local number experienced busy signals on October 31 during the time period of 6:00pm – 7:00pm. The Lincoln local and State-wide toll free number experienced busy signals on Dec 1 and Dec 2. The time period for Dec 1 was 12:30pm - 3:30pm. The time period for Dec 2 was 2:00pm – 3:00pm.

Element Thirteen: It is the intent of the Legislature that the department submits a report to the Clerk of the Legislature that includes the following monthly information on a quarterly basis of the workers in the ACCESSNebraska call centers and in local offices. The number of social service workers, eligibility technicians and social service lead workers and the number of vacancies are in these positions at the beginning of each month; the number of these positions vacated within a month; and the number of these positions filled within a month.

See attached:

- Human Resources 4th Quarter 2014

MEDICAID for Children and Families

	July 2014						August 2014						September 2014						October 2014	
	00-05 Days	06-30 Days	31-45 Days	46-60 Days	Over 60	Mnthly Total	00-05 Days	06-30 Days	31-45 Days	46-60 Days	Over 60	Mnthly Total	00-05 Days	06-30 Days	31-45 Days	46-60 Days	Over 60	Mnthly Total	00-05 Days	06-30 Days
Adams	7	20	4	3	5	39	8	29	4	5	2	48	12	29	5	0	3	49	15	24
Antelope	1	0	0	0	0	1	0	6	0	2	0	8	0	7	1	0	0	8	1	7
Arthur	0	0	0	0	0	0	0	0	0	0	0	0	0	0	0	0	0	0	0	0
Banner	0	0	0	0	0	0	0	1	0	0	0	1	0	1	0	0	0	1	0	1
Blaine	0	1	0	0	0	1	0	0	0	0	1	1	0	0	0	0	0	0	0	0
Boone	3	3	0	0	0	6	0	3	0	1	0	4	1	7	0	0	0	8	0	0
Box Butte	12	6	4	2	0	24	4	12	1	3	1	21	1	20	5	1	1	28	6	10
Boyd	0	1	1	2	0	4	0	3	0	0	0	3	0	2	0	0	0	2	0	1
Brown	0	2	0	0	0	2	1	4	0	0	1	6	1	1	1	1	0	4	2	1
Buffalo	33	21	4	6	3	67	6	42	4	8	3	63	9	41	9	1	2	62	12	39
Burt	4	4	0	1	0	9	3	8	0	3	2	16	1	9	1	0	0	11	2	9
Butler	4	3	0	1	0	8	0	7	0	1	0	8	1	12	0	0	0	13	2	6
Cass	18	20	1	5	1	45	6	15	3	2	2	28	11	15	6	0	0	32	4	19
Cedar	1	4	0	0	0	5	0	5	0	0	0	5	0	1	0	0	0	1	1	2
Chase	2	1	0	2	0	5	3	1	0	0	0	4	2	1	3	0	0	6	0	2
Cherry	6	2	2	1	0	11	0	11	0	0	0	11	1	12	2	0	0	15	1	7
Cheyenne	6	5	1	2	0	14	1	12	1	0	2	16	4	9	2	0	1	16	6	9
Clay	5	3	1	1	1	11	2	6	0	0	1	9	1	5	3	1	1	11	2	5
Colfax	5	10	3	2	0	20	3	8	6	5	1	23	1	6	2	2	0	11	1	11
Cuming	3	6	2	3	3	17	1	5	0	2	0	8	2	4	1	0	1	8	0	7
Custer	10	5	5	1	1	22	0	17	3	0	0	20	0	9	1	1	1	12	0	11

October 2014				November 2014					December 2014				County Total
31-45 Days	46-60 Days	Over 60	Mnthly Total	00-05 Days	06-30 Days	31-45 Days	46-60 Days	Mnthly Total	00-05 Days	06-30 Days	31-45 Days	Mnthly Total	
7	0	0	46	25	17	2	0	44	9	26	0	35	261
2	0	0	10	3	4	0	0	7	1	8	0	9	43
0	0	0	0	1	0	0	0	1	0	0	0	0	1
0	0	0	1	0	0	0	0	0	0	0	0	0	3
0	0	0	0	0	0	0	0	0	0	1	0	1	3
1	0	0	1	1	4	2	0	7	0	5	0	5	31
0	1	1	18	12	8	0	0	20	2	9	0	11	122
0	0	1	2	0	1	0	0	1	0	1	0	1	13
0	0	0	3	1	2	0	0	3	2	1	0	3	21
7	3	1	62	25	22	2	1	50	11	22	0	33	337
1	0	0	12	1	1	2	0	4	2	6	0	8	60
0	0	0	8	4	3	1	0	8	3	5	0	8	53
4	1	0	28	8	10	1	0	19	0	8	0	8	160
1	0	0	4	2	3	1	0	6	1	3	0	4	25
0	0	0	2	2	1	1	0	4	1	3	0	4	25
0	2	2	12	3	4	0	0	7	0	2	0	2	58
1	1	1	18	2	6	1	0	9	4	4	0	8	81
2	0	0	9	9	5	0	0	14	2	6	0	8	62
3	1	1	17	4	8	0	1	13	2	6	0	8	92
0	0	0	7	4	4	0	0	8	2	10	0	12	60
2	0	1	14	4	3	0	0	7	1	3	0	4	79

MEDICAID for Children and Families

	July 2014						August 2014						September 2014						October 2014	
	00-05 Days	06-30 Days	31-45 Days	46-60 Days	Over 60	Mnthly Total	00-05 Days	06-30 Days	31-45 Days	46-60 Days	Over 60	Mnthly Total	00-05 Days	06-30 Days	31-45 Days	46-60 Days	Over 60	Mnthly Total	00-05 Days	06-30 Days
Dakota	21	31	5	10	3	70	7	34	15	3	1	60	2	37	12	1	1	53	10	43
Dawes	7	3	1	2	0	13	2	14	2	0	0	18	1	11	2	0	0	14	0	8
Dawson	21	23	3	4	5	56	10	36	11	8	1	66	5	36	9	2	1	53	12	47
Deuel	2	1	0	0	0	3	1	4	1	0	0	6	0	2	0	0	0	2	1	2
Dixon	1	2	0	0	0	3	3	4	1	0	0	8	1	4	0	0	0	5	0	1
Dodge	33	33	7	14	2	89	10	44	9	7	3	73	10	41	10	1	1	63	19	54
Douglas	416	399	88	89	64	1,056	162	626	118	66	33	1,005	113	688	92	29	20	942	209	603
Dundy	1	0	1	0	0	2	0	1	0	0	0	1	0	1	0	0	1	2	1	1
Fillmore	0	0	0	0	1	1	1	2	0	1	0	4	0	3	0	0	0	3	2	6
Franklin	2	7	0	0	1	10	1	2	1	1	1	6	1	1	0	1	0	3	0	4
Frontier	1	0	0	0	0	1	0	4	0	1	0	5	0	4	0	0	0	4	0	2
Furnas	4	2	1	2	1	10	2	3	0	0	0	5	0	12	0	0	0	12	4	8
Gage	22	7	1	1	0	31	6	22	2	1	3	34	2	24	2	1	2	31	10	15
Garden	1	0	1	0	0	2	0	4	1	1	0	6	0	3	0	0	2	5	1	4
Garfield	2	1	0	0	0	3	0	1	0	0	0	1	0	3	0	0	0	3	1	1
Gosper	1	1	0	1	1	4	1	4	0	0	0	5	0	2	0	0	0	2	0	0
Grant	0	1	0	0	0	1	0	0	0	0	0	0	0	1	0	0	0	1	0	0
Greeley	2	1	0	1	0	4	0	3	0	0	0	3	0	0	1	1	0	2	1	1
Hall	44	56	5	14	6	125	23	81	22	13	6	145	20	87	23	7	2	139	32	85
Hamilton	1	5	2	1	1	10	2	7	0	0	0	9	1	6	1	0	1	9	0	8
Harlan	1	0	0	0	1	2	1	2	0	0	0	3	0	5	0	0	0	5	3	1

October 2014				November 2014					December 2014				County Total
31-45 Days	46-60 Days	Over 60	Mnthly Total	00-05 Days	06-30 Days	31-45 Days	46-60 Days	Mnthly Total	00-05 Days	06-30 Days	31-45 Days	Mnthly Total	
4	2	0	59	17	21	2	1	41	11	19	0	30	313
1	0	0	9	6	5	0	0	11	1	6	0	7	72
3	2	0	64	10	17	3	0	30	4	9	0	13	282
0	1	0	4	0	1	0	0	1	1	1	0	2	18
0	0	0	1	0	2	0	0	2	0	4	0	4	23
2	4	0	79	18	20	7	0	45	18	28	1	47	396
65	16	12	905	321	319	51	7	698	149	375	1	525	5,131
0	0	0	2	0	0	0	0	0	0	1	0	1	8
1	0	0	9	1	3	0	0	4	2	1	0	3	24
0	0	0	4	3	3	0	0	6	1	3	0	4	33
0	0	0	2	0	0	0	0	0	0	0	0	0	12
1	0	0	13	2	1	1	0	4	0	4	0	4	48
3	0	1	29	6	10	4	1	21	5	16	0	21	167
0	0	0	5	1	2	0	0	3	1	2	0	3	24
0	0	0	2	0	1	0	0	1	0	1	0	1	11
0	0	0	0	1	2	0	2	5	0	0	0	0	16
0	0	0	0	0	1	0	0	1	0	0	0	0	3
0	0	0	2	0	1	0	0	1	0	3	0	3	15
8	0	0	125	37	46	8	1	92	15	33	0	48	674
2	0	0	10	5	6	1	1	13	2	3	0	5	56
1	0	0	5	3	1	0	0	4	2	1	0	3	22

MEDICAID for Children and Families

	July 2014						August 2014						September 2014						October 2014	
	00-05 Days	06-30 Days	31-45 Days	46-60 Days	Over 60	Mnthly Total	00-05 Days	06-30 Days	31-45 Days	46-60 Days	Over 60	Mnthly Total	00-05 Days	06-30 Days	31-45 Days	46-60 Days	Over 60	Mnthly Total	00-05 Days	06-30 Days
Hayes	0	0	0	0	0	0	0	0	0	0	0	0	0	0	0	0	0	0	0	2
Hitchcock	1	1	0	0	0	2	1	4	0	0	0	5	0	5	0	0	0	5	0	2
Holt	5	6	1	3	0	15	1	9	1	1	1	13	0	11	2	0	1	14	1	10
Hooker	0	0	0	0	0	0	0	0	0	0	0	0	0	1	0	0	0	1	0	0
Howard	0	2	1	1	0	4	1	5	0	0	0	6	2	8	1	0	0	11	0	6
Jefferson	1	9	0	1	1	12	1	9	2	2	2	16	2	11	1	1	1	16	3	7
Johnson	1	2	1	1	0	5	4	3	1	0	1	9	0	2	1	0	0	3	0	2
Kearney	8	2	1	1	0	12	0	5	0	0	0	5	2	1	0	0	0	3	2	3
Keith	4	2	1	1	2	10	0	8	1	1	0	10	0	10	0	1	1	12	1	10
Keya Paha	0	1	0	0	0	1	0	1	0	0	0	1	0	0	0	0	0	0	0	0
Kimball	3	4	0	1	0	8	2	4	0	2	0	8	2	5	0	0	0	7	0	2
Knox	4	3	2	1	0	10	1	11	1	0	0	13	2	11	4	1	0	18	1	9
Lancaster	164	211	27	46	19	467	69	256	23	22	12	382	48	271	40	9	6	374	63	240
Lincoln	24	26	4	10	1	65	12	51	7	3	1	74	5	52	6	4	2	69	15	48
Logan	1	0	0	0	0	1	0	1	0	0	0	1	0	3	0	0	0	3	0	0
Loup	0	0	0	0	0	0	0	1	0	0	0	1	0	1	0	0	0	1	0	0
Madison	19	28	3	6	4	60	7	39	9	6	0	61	5	43	6	1	0	55	14	50
McPherson	0	0	0	0	0	0	0	0	0	0	0	0	0	0	0	0	0	0	0	0
Merrick	2	7	1	2	1	13	3	7	0	0	0	10	1	8	1	0	0	10	2	12
Morrill	9	6	1	0	1	17	1	4	2	0	1	8	0	9	1	0	0	10	1	8
Nance	0	1	0	1	0	2	2	3	1	2	0	8	0	3	0	0	1	4	0	6

October 2014				November 2014					December 2014				County Total
31-45 Days	46-60 Days	Over 60	Mnthly Total	00-05 Days	06-30 Days	31-45 Days	46-60 Days	Mnthly Total	00-05 Days	06-30 Days	31-45 Days	Mnthly Total	
0	0	0	2	0	0	0	0	0	1	2	0	3	5
0	0	0	2	1	3	3	0	7	0	1	0	1	22
2	2	1	16	4	3	5	0	12	3	4	0	7	77
0	0	0	0	1	0	0	0	1	0	1	0	1	3
1	0	0	7	2	0	1	0	3	0	7	0	7	38
0	0	0	10	2	5	1	0	8	1	1	0	2	64
0	2	0	4	0	5	1	0	6	2	5	0	7	34
0	1	0	6	3	3	0	0	6	1	4	0	5	37
0	0	0	11	6	3	3	0	12	2	8	0	10	65
0	0	0	0	0	0	0	0	0	0	0	0	0	2
1	0	0	3	0	4	0	0	4	0	3	0	3	33
0	0	0	10	2	8	0	0	10	1	11	0	12	73
23	14	6	346	145	137	19	2	303	60	170	0	230	2,102
5	0	0	68	19	24	1	0	44	8	20	0	28	348
0	0	0	0	1	2	0	0	3	0	0	0	0	8
0	0	0	0	0	1	0	0	1	0	0	0	0	3
4	1	0	69	10	34	4	0	48	7	26	0	33	326
0	0	0	0	0	0	0	0	0	1	0	0	1	1
0	0	1	15	4	0	1	0	5	0	3	0	3	56
1	0	0	10	5	2	1	0	8	2	4	0	6	59
0	0	0	6	2	0	0	0	2	0	2	0	2	24

MEDICAID for Children and Families

	July 2014						August 2014						September 2014						October 2014	
	00-05 Days	06-30 Days	31-45 Days	46-60 Days	Over 60	Mnthly Total	00-05 Days	06-30 Days	31-45 Days	46-60 Days	Over 60	Mnthly Total	00-05 Days	06-30 Days	31-45 Days	46-60 Days	Over 60	Mnthly Total	00-05 Days	06-30 Days
Stanton	2	1	0	0	0	3	1	3	0	0	1	5	0	3	2	0	0	5	0	6
Thayer	6	1	2	0	3	12	1	3	0	0	1	5	1	6	0	0	1	8	1	6
Thomas	0	0	0	0	0	0	0	0	0	0	0	0	0	0	0	0	1	1	0	0
Thurston	15	14	4	3	1	37	6	42	5	2	1	56	5	33	0	2	0	40	6	41
Valley	1	2	0	0	0	3	0	4	0	0	0	4	2	6	1	0	0	9	0	1
Washington	8	7	2	2	0	19	5	16	1	3	1	26	2	19	1	0	0	22	3	14
Wayne	4	3	0	1	0	8	1	9	3	1	0	14	1	5	5	0	0	11	3	8
Webster	0	0	1	0	1	2	0	2	1	0	0	3	2	5	0	0	0	7	0	5
Wheeler	0	0	0	0	0	0	0	3	0	0	0	3	0	0	0	0	0	0	0	0
York	11	12	1	1	1	26	2	10	2	4	2	20	3	17	4	0	1	25	4	15
Total	1,186	1,249	245	297	165	3,142	466	1,931	324	216	97	3,034	355	2,057	330	83	71	2,896	560	1,877

October 2014				November 2014					December 2014				County Total
31-45 Days	46-60 Days	Over 60	Mnthly Total	00-05 Days	06-30 Days	31-45 Days	46-60 Days	Mnthly Total	00-05 Days	06-30 Days	31-45 Days	Mnthly Total	
2	0	0	8	2	1	0	0	3	0	3	0	3	27
1	1	0	9	5	3	2	0	10	2	3	0	5	49
0	0	0	0	1	0	0	0	1	0	0	0	0	2
6	1	2	56	11	11	0	1	23	6	11	0	17	229
0	0	1	2	1	3	1	0	5	3	2	0	5	28
1	0	0	18	3	6	0	0	9	2	7	0	9	103
1	0	0	12	2	4	0	0	6	3	5	0	8	59
0	0	1	6	2	1	0	0	3	1	2	0	3	24
0	0	0	0	0	1	0	0	1	0	0	0	0	4
1	0	1	21	2	11	1	0	14	1	4	0	5	111
213	68	40	2,758	939	1,011	171	23	2,144	426	1,179	2	1,607	15,581

MEDICAID for Aged and Disabled

	July 2014						August 2014						September 2014						October 2014	
	00-05 Days	06-30 Days	31-45 Days	46-60 Days	Over 60	Mnthly Total	00-05 Days	06-30 Days	31-45 Days	46-60 Days	Over 60	Mnthly Total	00-05 Days	06-30 Days	31-45 Days	46-60 Days	Over 60	Mnthly Total	00-05 Days	06-30 Days
Adams	1	7	2	3	1	14	2	2	3	0	0	7	4	4	1	1	1	11	3	6
Antelope	0	0	0	1	2	3	0	0	1	1	0	2	0	0	1	0	0	1	0	2
Boone	0	0	0	0	1	1	1	0	0	1	1	3	1	0	0	0	0	1	0	0
Box Butte	0	1	0	0	0	1	0	1	1	0	1	3	0	4	0	0	0	4	2	2
Boyd	0	1	0	1	0	2	0	0	0	0	1	1	1	0	1	0	0	2	0	0
Brown	0	1	0	0	1	2	0	1	0	0	0	1	2	1	0	0	0	3	0	0
Buffalo	6	3	1	1	1	12	0	5	1	1	3	10	4	7	0	2	1	14	0	3
Burt	0	1	1	0	0	2	0	1	1	2	0	4	0	0	1	0	0	1	0	1
Butler	1	2	0	0	1	4	2	2	0	0	0	4	0	2	0	0	0	2	0	0
Cass	0	2	2	0	0	4	0	1	0	1	0	2	0	1	1	0	0	2	3	3
Cedar	0	0	0	0	0	0	0	0	0	0	1	1	0	2	0	0	1	3	1	3
Chase	0	1	0	0	0	1	0	0	0	1	0	1	0	1	2	0	0	3	0	0
Cherry	0	1	1	0	0	2	0	1	0	0	0	1	0	4	2	0	0	6	2	4
Cheyenne	1	0	1	0	0	2	1	2	0	0	1	4	0	5	1	0	2	8	0	1
Clay	1	4	1	0	1	7	0	1	0	0	1	2	0	1	0	0	0	1	1	1
Colfax	0	3	0	0	1	4	1	1	0	0	0	2	1	2	0	0	0	3	0	0
Cuming	1	0	1	0	1	3	0	1	1	0	0	2	0	0	0	0	0	0	1	0
Custer	1	2	1	0	0	4	1	1	1	1	0	4	0	1	0	0	0	1	1	2
Dakota	0	4	5	1	2	12	1	3	2	0	0	6	0	1	3	0	0	4	1	5
Dawes	0	1	0	2	0	3	0	4	1	0	1	6	1	1	0	0	0	2	1	1
Dawson	2	6	3	1	2	14	0	2	2	1	0	5	1	5	1	0	1	8	1	8

October 2014				November 2014					December 2014				County Total
31-45 Days	46-60 Days	Over 60	Mnthly Total	00-05 Days	06-30 Days	31-45 Days	46-60 Days	Mnthly Total	00-05 Days	06-30 Days	31-45 Days	Mnthly Total	
3	0	1	13	1	6	0	0	7	0	0	0	0	52
2	1	0	5	0	0	0	0	0	1	0	0	1	12
0	0	0	0	0	0	0	0	0	1	1	0	2	7
0	1	0	5	0	3	0	0	3	0	0	0	0	16
0	1	0	1	0	0	1	0	1	0	0	0	0	7
1	0	0	1	0	1	0	0	1	1	1	0	2	10
3	1	1	8	1	7	0	0	8	1	1	1	3	55
0	0	1	2	0	2	0	0	2	0	0	0	0	11
0	0	0	0	0	2	0	0	2	2	0	0	2	14
1	0	0	7	1	3	1	0	5	0	1	0	1	21
0	0	0	4	0	0	0	0	0	0	0	0	0	8
2	0	0	2	2	0	0	0	2	1	0	0	1	10
0	0	0	6	0	0	0	0	0	0	0	0	0	15
1	1	0	3	1	3	1	0	5	0	1	0	1	23
0	0	2	4	0	1	1	0	2	0	2	0	2	18
1	0	0	1	2	1	0	0	3	0	1	0	1	14
0	0	0	1	0	0	0	0	0	0	1	0	1	7
1	2	0	6	1	1	0	0	2	0	0	0	0	17
1	1	0	8	0	3	2	0	5	0	1	0	1	36
1	0	0	3	0	0	1	0	1	0	1	0	1	16
2	1	0	12	0	2	0	0	2	0	3	0	3	44

MEDICAID for Aged and Disabled

	July 2014						August 2014						September 2014						October 2014	
	00-05 Days	06-30 Days	31-45 Days	46-60 Days	Over 60	Mnthly Total	00-05 Days	06-30 Days	31-45 Days	46-60 Days	Over 60	Mnthly Total	00-05 Days	06-30 Days	31-45 Days	46-60 Days	Over 60	Mnthly Total	00-05 Days	06-30 Days
Deuel	0	0	0	0	0	0	0	0	1	0	0	1	0	1	1	0	0	2	0	0
Dixon	0	2	0	0	0	2	0	0	0	0	1	1	0	1	1	0	0	2	0	1
Dodge	3	7	1	0	0	11	3	12	1	1	0	17	3	6	2	1	1	13	2	8
Douglas	38	125	36	25	22	246	25	113	28	17	17	200	26	110	27	16	9	188	29	87
Dundy	0	1	0	0	0	1	0	2	0	1	0	3	1	0	0	0	0	1	0	1
Fillmore	1	1	0	0	0	2	0	0	1	0	0	1	0	1	0	0	0	1	1	0
Franklin	1	1	0	0	1	3	0	0	0	0	0	0	1	0	0	0	0	1	0	0
Frontier	0	0	1	0	0	1	1	1	0	0	0	2	0	1	0	0	0	1	0	1
Furnas	3	1	0	0	0	4	1	2	0	0	0	3	0	1	0	0	0	1	1	4
Gage	2	6	0	1	0	9	0	4	1	0	2	7	1	4	4	1	0	10	0	5
Garden	1	0	0	0	1	2	0	1	0	0	0	1	1	2	0	0	0	3	0	0
Garfield	0	1	0	0	0	1	0	0	1	0	0	1	0	0	1	0	0	1	1	0
Gosper	0	1	0	0	0	1	0	0	0	0	0	0	0	0	0	0	0	0	0	0
Grant	0	0	0	0	0	0	0	0	0	0	1	1	0	0	0	0	0	0	0	0
Greeley	0	0	1	0	0	1	0	0	1	0	0	1	0	0	0	0	0	0	1	0
Hall	5	8	5	2	2	22	2	9	4	2	9	26	6	12	4	4	2	28	2	15
Hamilton	1	1	0	0	1	3	0	0	0	0	0	0	0	0	0	0	0	0	0	0
Harlan	0	0	0	0	0	0	0	0	0	0	0	0	0	1	0	0	0	1	2	0
Hayes	0	0	0	0	0	0	0	0	0	0	0	0	0	1	0	0	0	1	0	0
Hitchcock	0	3	0	1	0	4	0	1	0	0	0	1	0	0	0	0	0	0	0	1
Holt	1	1	0	0	0	2	1	0	0	0	0	1	1	0	1	0	0	2	0	2

October 2014				November 2014					December 2014				County Total
31-45 Days	46-60 Days	Over 60	Mnthly Total	00-05 Days	06-30 Days	31-45 Days	46-60 Days	Mnthly Total	00-05 Days	06-30 Days	31-45 Days	Mnthly Total	
1	2	0	3	0	0	0	0	0	0	0	0	0	6
0	0	0	1	0	0	0	0	0	0	1	0	1	7
4	3	0	17	1	6	3	0	10	1	2	0	3	71
30	7	3	156	21	60	21	5	107	24	33	0	57	954
0	0	1	2	0	0	0	0	0	0	0	0	0	7
0	1	0	2	0	1	0	0	1	0	0	0	0	7
0	0	0	0	0	1	1	0	2	0	1	0	1	7
1	0	0	2	1	0	0	0	1	0	0	0	0	7
2	0	0	7	0	0	0	0	0	0	0	0	0	15
2	0	0	7	0	4	0	0	4	0	1	0	1	38
0	0	0	0	0	1	1	0	2	0	0	0	0	8
0	0	0	1	0	0	0	0	0	0	0	0	0	4
0	1	0	1	0	1	0	0	1	0	0	0	0	3
0	1	0	1	0	0	1	0	1	0	0	0	0	3
0	0	0	1	0	0	0	0	0	0	0	0	0	3
2	2	0	21	1	7	2	1	11	3	0	0	3	111
0	0	0	0	0	1	0	0	1	0	0	0	0	4
0	0	0	2	0	0	0	0	0	0	0	0	0	3
0	1	0	1	0	0	0	0	0	0	0	0	0	2
0	0	0	1	0	1	0	0	1	1	0	0	1	8
1	1	0	4	1	1	0	0	2	0	0	0	0	11

MEDICAID for Aged and Disabled

	July 2014						August 2014						September 2014						October 2014	
	00-05 Days	06-30 Days	31-45 Days	46-60 Days	Over 60	Mnthly Total	00-05 Days	06-30 Days	31-45 Days	46-60 Days	Over 60	Mnthly Total	00-05 Days	06-30 Days	31-45 Days	46-60 Days	Over 60	Mnthly Total	00-05 Days	06-30 Days
Hooker	0	0	0	0	0	0	0	0	0	0	0	0	0	0	0	0	0	0	0	1
Howard	0	3	1	1	2	7	0	1	0	0	0	1	0	0	0	0	0	0	0	2
Jefferson	0	5	0	1	0	6	0	2	1	2	0	5	1	2	0	0	0	3	1	2
Johnson	0	1	1	0	0	2	0	1	0	0	0	1	0	1	1	0	0	2	0	1
Kearney	2	1	0	0	0	3	0	3	0	0	0	3	1	0	0	0	0	1	0	1
Keith	2	1	0	1	1	5	0	5	2	0	1	8	0	2	1	1	0	4	0	1
Keya Paha	0	0	0	0	0	0	0	0	0	0	0	0	1	0	1	0	0	2	0	0
Kimball	0	2	1	1	0	4	0	0	0	0	0	0	1	3	0	0	0	4	2	1
Knox	0	3	2	0	1	6	2	1	0	0	0	3	0	4	0	0	0	4	0	3
Lancaster	14	52	9	8	9	92	5	45	13	6	6	75	10	46	11	6	2	75	8	43
Lincoln	4	11	2	1	3	21	4	7	1	0	1	13	4	6	6	1	1	18	5	8
Logan	0	0	0	0	0	0	0	1	0	0	0	1	0	0	0	0	0	0	0	0
Loup	0	0	0	0	0	0	0	0	0	0	0	0	0	0	0	0	0	0	0	0
Madison	2	8	2	1	2	15	3	9	3	0	1	16	5	9	5	0	1	20	3	6
Merrick	0	0	0	0	1	1	0	2	0	1	0	3	0	0	0	0	0	0	0	0
Morrill	0	2	0	1	0	3	2	0	0	0	0	2	0	0	1	1	0	2	1	2
Nance	2	0	2	0	1	5	0	1	1	1	0	3	0	1	0	1	0	2	1	0
Nemaha	0	4	0	0	1	5	1	4	0	0	0	5	1	2	2	1	1	7	1	2
Nuckolls	1	1	1	0	1	4	0	0	0	0	0	0	0	1	0	1	0	2	0	1
Otoe	1	4	0	0	0	5	1	4	2	0	0	7	0	4	1	0	0	5	0	1
Out-of-state	1	1	0	0	1	3	0	0	0	0	0	0	0	3	2	0	0	5	1	0

October 2014				November 2014					December 2014				County Total
31-45 Days	46-60 Days	Over 60	Mnthly Total	00-05 Days	06-30 Days	31-45 Days	46-60 Days	Mnthly Total	00-05 Days	06-30 Days	31-45 Days	Mnthly Total	
0	0	0	1	0	0	0	0	0	0	0	0	0	1
1	0	0	3	0	0	0	0	0	0	1	0	1	12
1	1	0	5	4	1	1	0	6	0	0	0	0	25
0	0	0	1	0	1	0	0	1	1	0	0	1	8
0	0	0	1	0	0	0	0	0	0	0	0	0	8
1	0	0	2	0	1	0	0	1	0	1	0	1	21
0	0	0	0	0	0	0	0	0	0	0	0	0	2
0	0	0	3	0	1	0	0	1	0	2	0	2	14
0	0	0	3	0	0	1	0	1	0	0	0	0	17
15	9	2	77	11	17	11	3	42	6	16	0	22	383
5	0	0	18	0	9	1	0	10	1	4	0	5	85
0	0	0	0	0	0	0	0	0	0	0	0	0	1
0	0	0	0	0	1	0	0	1	0	0	0	0	1
5	2	0	16	0	3	1	0	4	2	2	0	4	75
0	1	0	1	1	0	0	0	1	0	0	0	0	6
0	0	0	3	0	1	0	0	1	0	0	0	0	11
0	0	0	1	0	0	0	0	0	0	0	0	0	11
0	0	0	3	0	0	0	0	0	0	1	0	1	21
0	0	0	1	0	3	0	0	3	0	0	0	0	10
1	1	0	3	0	3	0	0	3	0	3	0	3	26
0	1	0	2	1	0	0	0	1	0	0	0	0	11

MEDICAID for Aged and Disabled

	July 2014						August 2014						September 2014						October 2014	
	00-05 Days	06-30 Days	31-45 Days	46-60 Days	Over 60	Mnthly Total	00-05 Days	06-30 Days	31-45 Days	46-60 Days	Over 60	Mnthly Total	00-05 Days	06-30 Days	31-45 Days	46-60 Days	Over 60	Mnthly Total	00-05 Days	06-30 Days
Pawnee	0	0	1	0	0	1	0	0	2	0	0	2	0	2	1	0	0	3	0	0
Perkins	0	2	0	0	0	2	0	0	0	0	0	0	0	0	0	0	0	0	0	0
Phelps	0	3	0	0	0	3	2	2	1	0	0	5	1	2	1	1	0	5	0	1
Pierce	0	1	1	0	0	2	0	0	1	0	0	1	0	3	0	0	0	3	0	0
Platte	2	3	2	2	1	10	2	1	3	0	1	7	0	1	3	1	2	7	1	3
Polk	0	0	1	0	1	2	1	1	1	0	0	3	1	1	3	0	0	5	0	1
Red Willow	1	0	2	0	0	3	1	4	1	1	0	7	1	1	1	2	0	5	1	1
Richardson	2	3	0	0	0	5	0	1	2	0	0	3	0	2	1	0	1	4	1	4
Rock	0	0	0	1	0	1	0	1	0	0	1	2	0	1	1	0	0	2	0	0
Saline	0	2	2	1	1	6	1	2	0	0	0	3	0	3	0	0	0	3	0	1
Sarpy	7	18	1	1	3	30	1	14	4	2	4	25	2	17	6	2	1	28	6	14
Saunders	2	1	0	0	0	3	2	5	0	1	1	9	2	4	3	0	0	9	1	0
Scotts Bluff	2	7	0	1	2	12	4	10	1	1	0	16	3	16	5	2	0	26	4	11
Seward	0	0	0	1	0	1	1	1	2	2	0	6	1	0	1	0	0	2	0	1
Sheridan	0	1	1	0	0	2	0	2	0	0	0	2	2	0	0	0	0	2	0	2
Sherman	0	0	1	1	0	2	0	2	0	0	0	2	0	1	0	0	1	2	1	0
Stanton	0	0	0	1	0	1	1	0	0	0	0	1	0	0	1	0	0	1	0	0
Thayer	0	1	2	0	0	3	2	0	0	1	1	4	0	0	0	0	2	2	0	0
Thurston	1	1	0	0	0	2	0	3	1	0	1	5	0	2	0	1	0	3	0	4
Valley	0	1	0	0	0	1	0	3	0	0	0	3	0	0	0	0	0	0	0	0
Washington	0	4	0	0	0	4	3	3	0	1	0	7	0	2	1	0	0	3	1	1

October 2014				November 2014					December 2014				County Total
31-45 Days	46-60 Days	Over 60	Mnthly Total	00-05 Days	06-30 Days	31-45 Days	46-60 Days	Mnthly Total	00-05 Days	06-30 Days	31-45 Days	Mnthly Total	
1	0	0	1	0	0	0	0	0	0	0	0	0	7
0	0	0	0	1	0	0	0	1	0	0	0	0	3
0	0	0	1	0	1	0	0	1	0	0	0	0	15
0	0	0	0	0	0	0	0	0	0	0	0	0	6
2	0	0	6	0	3	3	0	6	1	1	0	2	38
0	0	1	2	0	0	0	0	0	0	0	0	0	12
0	0	0	2	0	4	1	0	5	0	0	0	0	22
2	0	0	7	0	0	1	0	1	0	0	0	0	20
0	2	0	2	0	0	0	0	0	0	0	0	0	7
1	0	0	2	0	1	0	0	1	0	2	0	2	17
8	0	1	29	6	8	3	0	17	2	6	0	8	137
0	0	0	1	0	2	0	0	2	1	0	0	1	25
1	1	0	17	2	8	2	0	12	6	3	0	9	92
0	0	0	1	1	0	1	0	2	2	0	0	2	14
0	0	0	2	0	0	1	0	1	1	0	0	1	10
0	0	0	1	0	1	0	0	1	0	0	0	0	8
0	1	0	1	0	0	0	0	0	0	0	0	0	4
0	0	0	0	0	0	1	0	1	0	1	0	1	11
2	0	0	6	0	2	0	0	2	0	3	0	3	21
0	0	0	0	1	0	2	0	3	0	0	0	0	7
2	0	0	4	0	2	1	0	3	0	2	0	2	23

	July 2014						August 2014						September 2014						October 2014	
	00-05 Days	06-30 Days	31-45 Days	46-60 Days	Over 60	Mnthly Total	00-05 Days	06-30 Days	31-45 Days	46-60 Days	Over 60	Mnthly Total	00-05 Days	06-30 Days	31-45 Days	46-60 Days	Over 60	Mnthly Total	00-05 Days	06-30 Days
Wayne	0	1	0	1	0	2	0	0	0	0	0	0	0	2	1	0	0	3	0	2
Webster	0	0	0	0	1	1	0	2	0	0	0	2	0	1	0	1	0	2	1	2
York	0	1	1	0	0	2	1	3	0	2	0	6	1	2	0	0	0	3	0	2
Total	116	348	99	64	73	700	82	320	94	51	58	605	93	330	115	47	30	615	96	292

October 2014				November 2014					December 2014				County Total
31-45 Days	46-60 Days	Over 60	Mnthly Total	00-05 Days	06-30 Days	31-45 Days	46-60 Days	Mnthly Total	00-05 Days	06-30 Days	31-45 Days	Mnthly Total	
0	2	0	4	0	0	0	1	1	0	0	0	0	10
0	0	0	3	0	0	0	0	0	1	2	0	3	11
1	1	0	4	0	0	0	0	0	0	1	0	1	16
111	50	13	562	62	192	67	10	331	60	103	1	164	2,977

Children's Health Insurance Program

	July 2014						August 2014						September 2014						October 2014	
	00-05 Days	06-30 Days	31-45 Days	46-60 Days	Over 60	Mnthly Total	00-05 Days	06-30 Days	31-45 Days	46-60 Days	Over 60	Mnthly Total	00-05 Days	06-30 Days	31-45 Days	46-60 Days	Over 60	Mnthly Total	00-05 Days	06-30 Days
Adams	2	7	3	1	1	14	0	5	1	0	0	6	3	9	1	1	0	14	2	2
Antelope	0	0	0	0	0	0	0	0	0	0	0	0	0	1	0	0	0	1	0	0
Banner	0	0	0	0	0	0	0	0	0	0	0	0	0	0	0	0	0	0	1	1
Boone	3	0	0	1	0	4	1	0	0	0	0	1	0	0	0	0	0	0	0	0
Box Butte	2	2	0	0	0	4	0	3	0	1	0	4	0	3	2	0	0	5	2	2
Boyd	0	1	0	1	0	2	0	2	0	0	0	2	0	1	0	0	0	1	0	1
Brown	0	1	0	0	0	1	0	1	0	0	0	1	0	1	0	0	0	1	0	4
Buffalo	4	4	0	0	1	9	2	4	1	0	0	7	2	7	0	1	1	11	4	11
Burt	1	0	0	0	0	1	0	1	0	0	1	2	1	1	0	0	0	2	0	1
Butler	0	1	0	1	0	2	1	2	1	0	0	4	0	1	0	0	0	1	0	0
Cass	2	6	0	1	0	9	4	2	0	1	0	7	0	3	1	0	0	4	0	2
Cedar	0	0	0	0	0	0	0	1	0	0	0	1	0	0	0	0	0	0	0	0
Chase	0	0	0	0	0	0	0	0	1	0	0	1	0	1	1	0	0	2	0	0
Cherry	0	1	0	1	0	2	0	2	0	0	0	2	1	3	0	0	0	4	0	2
Cheyenne	2	0	0	0	0	2	0	0	0	0	0	0	0	3	0	0	0	3	0	2
Clay	0	1	0	0	0	1	0	3	0	0	0	3	1	0	1	0	0	2	0	2
Colfax	3	2	0	0	0	5	2	6	2	1	0	11	2	4	0	0	0	6	2	5
Cuming	2	2	1	0	1	6	1	3	0	0	0	4	0	0	0	0	0	0	1	2
Custer	1	1	1	0	0	3	0	6	1	0	0	7	0	3	0	0	0	3	0	2
Dakota	2	9	0	1	0	12	3	5	3	0	0	11	3	6	3	1	0	13	3	4
Dawes	0	0	0	1	0	1	0	1	0	0	0	1	0	1	0	0	0	1	1	1

October 2014				November 2014					December 2014			County Total
31-45 Days	46-60 Days	Over 60	Mnthly Total	00-05 Days	06-30 Days	31-45 Days	46-60 Days	Mnthly Total	00-05 Days	06-30 Days	Mnthly Total	
0	0	0	4	3	4	0	0	7	2	6	8	53
0	0	0	0	0	0	0	0	0	0	1	1	2
0	0	0	2	0	0	0	0	0	0	0	0	2
0	0	0	0	0	0	0	0	0	1	5	6	11
0	0	0	4	2	0	0	0	2	0	1	1	20
0	0	0	1	0	0	0	0	0	0	0	0	6
0	0	0	4	0	1	0	0	1	1	0	1	9
3	1	1	20	3	6	1	1	11	4	8	12	70
0	0	0	1	0	0	0	0	0	2	3	5	11
0	0	0	0	1	0	0	0	1	0	2	2	10
0	1	0	3	3	2	0	0	5	1	6	7	35
0	0	0	0	1	1	0	0	2	0	2	2	5
0	0	0	0	0	1	0	0	1	1	1	2	6
0	0	0	2	1	0	1	0	2	0	1	1	13
0	0	0	2	1	0	1	0	2	1	2	3	12
0	0	0	2	3	1	0	0	4	0	5	5	17
0	0	0	7	1	0	1	0	2	2	3	5	36
0	0	0	3	0	0	0	0	0	0	2	2	15
0	0	0	2	1	1	0	0	2	0	2	2	19
1	0	0	8	3	6	0	0	9	1	3	4	57
0	0	0	2	1	0	0	0	1	1	2	3	9

Children's Health Insurance Program

	July 2014						August 2014						September 2014						October 2014	
	00-05 Days	06-30 Days	31-45 Days	46-60 Days	Over 60	Mnthly Total	00-05 Days	06-30 Days	31-45 Days	46-60 Days	Over 60	Mnthly Total	00-05 Days	06-30 Days	31-45 Days	46-60 Days	Over 60	Mnthly Total	00-05 Days	06-30 Days
Dawson	1	5	1	1	0	8	3	5	0	4	0	12	0	12	0	0	0	12	2	7
Deuel	0	0	0	0	0	0	0	0	0	0	0	0	0	0	0	0	0	0	1	1
Dixon	2	0	0	0	0	2	1	1	1	0	0	3	0	0	0	0	0	0	0	0
Dodge	3	7	2	0	0	12	3	3	1	0	0	7	3	8	2	0	0	13	3	13
Douglas	75	51	17	21	4	168	40	100	26	18	2	186	40	110	19	3	0	172	47	84
Dundy	0	0	0	0	0	0	0	1	0	0	0	1	0	0	0	0	0	0	0	0
Fillmore	0	0	0	0	0	0	0	0	0	0	0	0	0	0	0	0	0	0	0	2
Franklin	0	1	0	0	0	1	0	0	0	1	0	1	0	0	0	0	0	0	0	0
Frontier	1	0	0	0	0	1	0	1	0	1	0	2	0	0	0	0	0	0	0	1
Furnas	0	0	0	0	0	0	0	0	0	0	0	0	0	1	0	0	0	1	1	2
Gage	3	3	0	2	0	8	0	6	1	0	0	7	2	5	0	0	2	9	2	3
Garden	0	0	0	0	0	0	0	0	0	0	0	0	0	0	0	0	0	0	1	0
Garfield	0	0	0	0	0	0	0	1	0	1	0	2	0	0	0	0	0	0	0	0
Gosper	1	0	0	0	0	1	0	0	0	0	0	0	0	0	0	0	0	0	0	0
Grant	0	0	0	0	0	0	0	0	0	0	0	0	0	0	0	0	0	0	1	0
Greeley	0	0	0	0	0	0	0	1	0	0	0	1	0	0	1	0	0	1	0	0
Hall	10	5	2	1	3	21	6	13	5	3	1	28	3	16	3	0	0	22	7	18
Hamilton	1	2	0	0	0	3	0	1	0	1	0	2	0	3	0	0	0	3	0	0
Harlan	0	0	0	0	0	0	1	1	0	0	0	2	1	1	0	0	0	2	0	0
Hitchcock	0	0	0	0	0	0	0	0	0	0	0	0	0	0	0	0	0	0	0	1
Holt	0	2	1	1	0	4	0	3	0	0	0	3	0	3	0	0	0	3	1	1

October 2014				November 2014					December 2014			County Total
31-45 Days	46-60 Days	Over 60	Mnthly Total	00-05 Days	06-30 Days	31-45 Days	46-60 Days	Mnthly Total	00-05 Days	06-30 Days	Mnthly Total	
2	1	0	12	3	3	0	0	6	1	4	5	55
0	0	0	2	0	1	0	0	1	0	1	1	4
0	0	0	0	1	0	0	0	1	0	0	0	6
1	0	0	17	6	5	1	1	13	4	5	9	71
7	2	2	142	49	49	14	1	113	30	86	116	897
0	0	0	0	0	0	0	0	0	0	0	0	1
0	0	0	2	0	0	0	0	0	1	0	1	3
0	0	0	0	0	0	0	0	0	0	3	3	5
0	0	0	1	0	0	0	0	0	0	0	0	4
0	0	0	3	0	0	0	0	0	0	2	2	6
1	0	0	6	2	3	0	0	5	2	1	3	38
0	0	0	1	0	1	0	0	1	1	0	1	3
0	0	0	0	0	0	0	0	0	0	0	0	2
0	0	0	0	0	0	0	0	0	0	0	0	1
0	0	0	1	0	0	0	0	0	0	0	0	1
0	0	0	0	0	0	0	0	0	0	0	0	2
3	0	0	28	13	8	2	0	23	3	9	12	134
0	0	0	0	1	0	0	0	1	0	1	1	10
0	0	0	0	0	0	0	0	0	0	0	0	4
0	0	0	1	1	0	0	0	1	0	0	0	2
0	1	0	3	0	0	2	0	2	1	2	3	18

October 2014				November 2014					December 2014			County Total
31-45 Days	46-60 Days	Over 60	Mnthly Total	00-05 Days	06-30 Days	31-45 Days	46-60 Days	Mnthly Total	00-05 Days	06-30 Days	Mnthly Total	
0	0	0	0	0	1	0	0	1	0	3	3	13
0	0	0	1	0	0	1	0	1	0	1	1	13
0	0	0	1	0	1	1	0	2	0	0	0	7
0	0	0	2	0	0	0	0	0	1	3	4	8
0	0	0	2	1	1	0	0	2	0	2	2	12
0	0	0	0	0	1	0	0	1	0	0	0	2
0	0	0	2	0	1	0	0	1	0	0	0	3
0	0	0	1	1	5	0	0	6	1	4	5	22
4	0	0	59	25	21	0	0	46	7	40	47	327
0	0	0	10	6	3	0	0	9	0	4	4	54
0	0	0	0	0	0	0	0	0	0	0	0	2
0	0	0	1	0	0	0	0	0	0	0	0	1
2	0	0	11	8	8	0	0	16	1	8	9	65
0	0	0	3	0	1	1	0	2	0	1	1	14
0	0	0	3	1	0	1	0	2	1	2	3	15
0	0	0	0	1	0	0	0	1	0	0	0	1
1	0	0	1	1	0	0	0	1	0	2	2	6
1	0	0	1	1	2	0	0	3	0	1	1	9
0	0	0	3	2	1	0	1	4	2	3	5	29
0	0	0	0	1	0	0	0	1	0	0	0	4
0	0	0	1	1	0	0	0	1	0	0	0	3

Children's Health Insurance Program

	July 2014						August 2014						September 2014						October 2014	
	00-05 Days	06-30 Days	31-45 Days	46-60 Days	Over 60	Mnthly Total	00-05 Days	06-30 Days	31-45 Days	46-60 Days	Over 60	Mnthly Total	00-05 Days	06-30 Days	31-45 Days	46-60 Days	Over 60	Mnthly Total	00-05 Days	06-30 Days
Perkins	0	0	0	0	0	0	0	2	0	0	0	2	0	0	0	0	0	0	0	0
Phelps	1	0	1	0	0	2	0	0	0	0	0	0	1	0	0	0	0	1	0	1
Pierce	0	2	0	1	0	3	0	1	0	0	0	1	0	0	1	0	0	1	0	0
Platte	4	1	2	0	1	8	0	10	2	2	0	14	0	4	1	0	0	5	1	7
Polk	0	2	0	1	0	3	0	1	0	0	0	1	0	0	0	0	0	0	0	1
Red Willow	1	0	0	0	0	1	2	3	1	0	0	6	0	2	1	0	0	3	0	2
Richardson	0	1	0	0	0	1	0	1	0	0	0	1	0	1	0	0	1	2	1	2
Rock	0	0	0	0	0	0	0	0	0	0	0	0	0	0	0	0	0	0	0	1
Saline	4	3	0	1	0	8	1	5	1	1	0	8	1	3	2	0	0	6	1	0
Sarpy	15	22	5	4	3	49	8	27	7	2	0	44	4	28	11	1	0	44	9	20
Saunders	3	1	1	0	0	5	1	2	1	0	1	5	1	3	0	0	0	4	1	5
Scotts Bluff	7	7	1	0	1	16	4	4	3	2	0	13	2	6	2	0	0	10	3	9
Seward	1	2	0	0	0	3	1	0	0	0	0	1	0	2	0	0	0	2	2	2
Sheridan	0	1	0	0	0	1	1	1	0	0	0	2	0	2	0	0	0	2	0	1
Sherman	0	1	0	0	0	1	0	1	0	0	0	1	0	1	0	0	0	1	1	0
Stanton	1	0	0	0	0	1	0	0	0	0	0	0	0	0	1	0	0	1	0	0
Thayer	0	0	0	0	0	0	0	0	0	0	0	0	2	0	0	0	0	2	1	0
Thurston	0	0	1	0	0	1	1	8	0	0	0	9	3	7	0	1	0	11	2	9
Valley	0	1	0	0	0	1	0	2	0	0	0	2	0	0	0	0	0	0	0	0
Washington	1	1	1	0	0	3	1	2	0	0	0	3	0	3	0	0	0	3	0	2
Wayne	1	0	0	1	0	2	2	0	0	0	0	2	0	2	0	0	0	2	0	3

October 2014				November 2014					December 2014			County Total
31-45 Days	46-60 Days	Over 60	Mnthly Total	00-05 Days	06-30 Days	31-45 Days	46-60 Days	Mnthly Total	00-05 Days	06-30 Days	Mnthly Total	
0	0	0	0	1	1	0	0	2	0	0	0	4
1	0	0	2	1	2	0	0	3	0	2	2	10
0	0	0	0	1	0	0	0	1	0	1	1	7
1	0	0	9	3	3	0	0	6	4	10	14	56
1	0	0	2	0	0	0	0	0	0	3	3	9
0	0	0	2	0	2	1	0	3	0	3	3	18
0	0	0	3	0	0	0	0	0	0	0	0	7
0	0	0	1	0	0	0	0	0	0	0	0	1
0	0	0	1	3	0	0	0	3	0	0	0	26
2	0	1	32	9	12	1	1	23	4	38	42	234
1	0	0	7	0	1	0	0	1	1	5	6	28
3	0	0	15	8	9	3	0	20	3	2	5	79
0	0	0	4	1	2	0	0	3	0	3	3	16
0	0	0	1	1	0	1	0	2	0	1	1	9
0	0	0	1	1	0	0	0	1	0	0	0	5
0	0	0	0	1	0	0	0	1	0	0	0	3
0	0	0	1	0	1	0	0	1	1	0	1	5
1	0	0	12	3	1	0	0	4	1	2	3	40
0	0	0	0	0	1	0	0	1	0	0	0	4
0	0	0	2	1	1	0	0	2	0	1	1	14
0	0	0	3	2	2	0	0	4	1	1	2	15

	July 2014						August 2014						September 2014						October 2014	
	00-05 Days	06-30 Days	31-45 Days	46-60 Days	Over 60	Mnthly Total	00-05 Days	06-30 Days	31-45 Days	46-60 Days	Over 60	Mnthly Total	00-05 Days	06-30 Days	31-45 Days	46-60 Days	Over 60	Mnthly Total	00-05 Days	06-30 Days
Webster	0	0	0	0	0	0	0	0	0	0	0	0	0	1	0	1	0	2	0	2
Wheeler	0	0	0	0	0	0	0	0	0	0	0	0	0	1	0	0	0	1	0	0
York	4	1	1	1	0	7	1	2	1	0	1	5	2	4	0	0	0	6	0	3
Total	197	210	51	55	16	529	105	330	73	45	12	565	92	352	64	10	5	523	125	320

October 2014				November 2014					December 2014			County Total
31-45 Days	46-60 Days	Over 60	Mnthly Total	00-05 Days	06-30 Days	31-45 Days	46-60 Days	Mnthly Total	00-05 Days	06-30 Days	Mnthly Total	
0	0	0	2	0	1	0	0	1	0	1	1	6
0	0	0	0	0	0	0	0	0	0	0	0	1
0	0	1	4	1	2	0	0	3	1	0	1	26
36	6	5	492	186	180	33	5	404	89	316	405	2,918

599 CHIP

Total Approvals	231
Timely Approval	224
Untimely Approval	7
Agency Delay	4
Client Delay	3
Total Denials	32
Timely Denial	27
Untimely Denial	5
Agency Delay	2
Client Delay	3

MEDICAID

Total Approvals	10,039
Timely Approval	9,752
Untimely Approval	287
Agency Delay	90
Client Delay	183
Third Party Delay	14
Total Denials	9,869
Timely Denial	9,247
Untimely Denial	622
Agency Delay	182
Client Delay	404
Third Party Delay	36

<u>County</u>	<u>Program</u>	<u>Month</u>
Adams	CHIP	October
Adams	CHIP	November
Adams	Medicaid -Children and Families	October
Adams	Medicaid -Children and Families	November
Adams	Medicaid -Children and Families	December
Adams	Medicaid for Aged and Disabled	October
Adams	Medicaid for Aged and Disabled	October
Adams	Medicaid for Aged and Disabled	October
Adams	Medicaid for Aged and Disabled	October
Adams	Medicaid for Aged and Disabled	October
Adams	Medicaid for Aged and Disabled	October
Adams	Medicaid for Aged and Disabled	November
Adams	Medicaid for Aged and Disabled	November
Adams	Medicaid for Aged and Disabled	November
Adams	Medicaid for Aged and Disabled	November
Adams	Medicaid for Aged and Disabled	November
Adams	Medicaid for Aged and Disabled	November
Adams	Medicaid for Aged and Disabled	December
Adams	Medicaid for Aged and Disabled	December
Adams	Medicaid for Aged and Disabled	December
Adams	Medicaid for Aged and Disabled	December
Adams	Medicaid for Aged and Disabled	December
Antelope	Medicaid for Aged and Disabled	October
Antelope	Medicaid for Aged and Disabled	October
Antelope	Medicaid for Aged and Disabled	October
Antelope	Medicaid for Aged and Disabled	October
Antelope	Medicaid for Aged and Disabled	October
Antelope	Medicaid for Aged and Disabled	November
Antelope	Medicaid for Aged and Disabled	November
Antelope	Medicaid for Aged and Disabled	November
Antelope	Medicaid for Aged and Disabled	December
Banner	Medicaid for Aged and Disabled	November
Boone	Medicaid for Aged and Disabled	October
Boone	Medicaid for Aged and Disabled	October
Boone	Medicaid for Aged and Disabled	November
Boone	Medicaid for Aged and Disabled	November
Boone	Medicaid for Aged and Disabled	November
Boone	Medicaid for Aged and Disabled	November
Boone	Medicaid for Aged and Disabled	November
Boone	Medicaid for Aged and Disabled	December
Boone	Medicaid for Aged and Disabled	December
Box Butte	CHIP	October
Box Butte	Medicaid for Aged and Disabled	October
Box Butte	Medicaid for Aged and Disabled	October
Box Butte	Medicaid for Aged and Disabled	October
Box Butte	Medicaid for Aged and Disabled	November
Box Butte	Medicaid for Aged and Disabled	November
Box Butte	Medicaid for Aged and Disabled	December
Box Butte	Medicaid for Aged and Disabled	December
Box Butte	Medicaid for Aged and Disabled	December
Box Butte	Medicaid for Aged and Disabled	December
Box Butte	Medicaid for Aged and Disabled	December
Boyd	Medicaid for Aged and Disabled	October
Boyd	Medicaid for Aged and Disabled	October
Boyd	Medicaid for Aged and Disabled	November
Boyd	Medicaid for Aged and Disabled	December
Brown	Medicaid for Aged and Disabled	October
Brown	Medicaid for Aged and Disabled	November
Brown	Medicaid for Aged and Disabled	November
Brown	Medicaid for Aged and Disabled	November

Cedar	CHIP	October
Cedar	CHIP	November
Cedar	Medicaid for Aged and Disabled	October
Cedar	Medicaid for Aged and Disabled	November
Cedar	Medicaid for Aged and Disabled	November
Cedar	Medicaid for Aged and Disabled	December
Cedar	Medicaid for Aged and Disabled	December
Cedar	Medicaid for Aged and Disabled	December
Chase	Medicaid for Aged and Disabled	October
Chase	Medicaid for Aged and Disabled	October
Chase	Medicaid for Aged and Disabled	October
Chase	Medicaid for Aged and Disabled	November
Chase	Medicaid for Aged and Disabled	December
Cherry	Medicaid for Aged and Disabled	October
Cherry	Medicaid for Aged and Disabled	October
Cherry	Medicaid for Aged and Disabled	October
Cherry	Medicaid for Aged and Disabled	November
Cherry	Medicaid for Aged and Disabled	November
Cherry	Medicaid for Aged and Disabled	December
Cherry	Medicaid for Aged and Disabled	December
Cheyenne	Medicaid for Aged and Disabled	October
Cheyenne	Medicaid for Aged and Disabled	October
Cheyenne	Medicaid for Aged and Disabled	November
Cheyenne	Medicaid for Aged and Disabled	November
Cheyenne	Medicaid for Aged and Disabled	November
Cheyenne	Medicaid for Aged and Disabled	December
Clay	CHIP	October
Clay	CHIP	November
Clay	Medicaid for Aged and Disabled	October
Clay	Medicaid for Aged and Disabled	October
Clay	Medicaid for Aged and Disabled	October
Clay	Medicaid for Aged and Disabled	November
Clay	Medicaid for Aged and Disabled	November
Clay	Medicaid for Aged and Disabled	November
Clay	Medicaid for Aged and Disabled	December
Clay	Medicaid for Aged and Disabled	December
Clay	Medicaid for Aged and Disabled	December
Colfax	CHIP	October
Colfax	CHIP	October
Colfax	CHIP	November
Colfax	CHIP	December
Colfax	Medicaid for Aged and Disabled	October
Colfax	Medicaid for Aged and Disabled	October
Colfax	Medicaid for Aged and Disabled	October
Colfax	Medicaid for Aged and Disabled	November
Colfax	Medicaid for Aged and Disabled	November
Colfax	Medicaid for Aged and Disabled	December
Colfax	Medicaid for Aged and Disabled	December
Colfax	Medicaid for Aged and Disabled	December
Cuming	CHIP	November
Cuming	CHIP	December
Cuming	Medicaid for Aged and Disabled	October
Cuming	Medicaid for Aged and Disabled	October
Cuming	Medicaid for Aged and Disabled	November
Cuming	Medicaid for Aged and Disabled	November
Cuming	Medicaid for Aged and Disabled	November
Cuming	Medicaid for Aged and Disabled	November
Cuming	Medicaid for Aged and Disabled	November
Cuming	Medicaid for Aged and Disabled	December
Cuming	Medicaid for Aged and Disabled	December
Cuming	Medicaid for Aged and Disabled	December

Jefferson	Medicaid for Aged and Disabled	December
Jefferson	Medicaid for Aged and Disabled	December
Jefferson	Medicaid for Aged and Disabled	December
Johnson	CHIP	November
Johnson	Medicaid for Aged and Disabled	October
Johnson	Medicaid for Aged and Disabled	October
Johnson	Medicaid for Aged and Disabled	October
Johnson	Medicaid for Aged and Disabled	November
Johnson	Medicaid for Aged and Disabled	November
Johnson	Medicaid for Aged and Disabled	December
Kearney	CHIP	November
Kearney	CHIP	December
Kearney	Medicaid for Aged and Disabled	October
Kearney	Medicaid for Aged and Disabled	October
Kearney	Medicaid for Aged and Disabled	November
Kearney	Medicaid for Aged and Disabled	December
Keith	CHIP	December
Keith	Medicaid for Aged and Disabled	October
Keith	Medicaid for Aged and Disabled	October
Keith	Medicaid for Aged and Disabled	October
Keith	Medicaid for Aged and Disabled	October
Keith	Medicaid for Aged and Disabled	October
Keith	Medicaid for Aged and Disabled	November
Keith	Medicaid for Aged and Disabled	November
Keith	Medicaid for Aged and Disabled	December
Keith	Medicaid for Aged and Disabled	December
Keith	Medicaid for Aged and Disabled	December
Kimball	Medicaid for Aged and Disabled	October
Kimball	Medicaid for Aged and Disabled	October
Kimball	Medicaid for Aged and Disabled	October
Kimball	Medicaid for Aged and Disabled	November
Kimball	Medicaid for Aged and Disabled	November
Kimball	Medicaid for Aged and Disabled	December
Kimball	Medicaid for Aged and Disabled	December
Knox	Medicaid for Aged and Disabled	October
Knox	Medicaid for Aged and Disabled	November
Knox	Medicaid for Aged and Disabled	November
Knox	Medicaid for Aged and Disabled	December
Knox	Medicaid for Aged and Disabled	December
Knox	Medicaid for Aged and Disabled	December
Lancaster	CHIP	October
Lancaster	CHIP	October
Lancaster	CHIP	October
Lancaster	CHIP	October
Lancaster	CHIP	November
Lancaster	CHIP	November
Lancaster	CHIP	December
Lancaster	CHIP	December
Lancaster	CHIP	December
Lancaster	Medicaid -Children and Families	October
Lancaster	Medicaid -Children and Families	October
Lancaster	Medicaid -Children and Families	October
Lancaster	Medicaid -Children and Families	November
Lancaster	Medicaid -Children and Families	November
Lancaster	Medicaid -Children and Families	November
Lancaster	Medicaid -Children and Families	November
Lancaster	Medicaid -Children and Families	November
Lancaster	Medicaid -Children and Families	December
Lancaster	Medicaid -Children and Families	December
Lancaster	Medicaid -Children and Families	December
Lancaster	Medicaid -Children and Families	December

Status Reason# of Program Cases

Eligibility Period Ended	1
Eligibility Period Ended	2
In Another Case	1
No Eligible Participants	2
Other	2
Case Review Not Completed	5
Closed Retro MED	4
Death of Participant	7
Failed Living Arrangement	1
Failed to Provide Information	3
Not Considered a Resident of NE	1
Other	1
Closed Retro MED	2
Death of Participant	9
Failed to Provide Information	2
In Another Case	8
Unable to Locate or Moved	1
Case Review Not Completed	1
Client Request	1
Death of Participant	8
Eligibility Requirements Not Met	1
Failed Living Arrangement	1
Case Review Not Completed	1
Closed Retro MED	2
Death of Participant	1
Failed to Provide Information	1
In Another Case	2
Case Review Not Completed	2
Death of Participant	1
Not Considered a Resident of NE	1
Case Review Not Completed	1
Client Request	1
Case Review Not Completed	1
Death of Participant	1
Case Review Not Completed	1
Client Request	1
Death of Participant	3
No Eligible Participants	1
Failed to Provide Information	1
No Eligible Participants	1
Eligibility Period Ended	1
Closed Retro MED	1
Death of Participant	4
Not Considered a Resident of NE	1
Death of Participant	4
In Another Case	2
Case Review Not Completed	1
Client Request	1
Death of Participant	1
In Another Case	2
Unable to Locate or Moved	1
Closed Retro MED	1
Death of Participant	1
Death of Participant	1
Unable to Locate or Moved	1
Death of Participant	1
Case Review Not Completed	1
Death of Participant	1
In Another Case	1

Unable to Locate or Moved	1
Case Review Not Completed	1
Closed Retro MED	1
Eligibility Period Ended	2
Eligibility Period Ended	2
In Another Case	1
Eligibility Period Ended	1
Case Review Not Completed	3
Closed Retro MED	3
Death of Participant	6
Failed Living Arrangement	1
Failed to Provide Information	2
In Another Case	4
Share of Cost Exceeds Need	1
Unable to Locate or Moved	2
Closed Retro MED	2
Death of Participant	11
Failed to Provide Information	1
In Another Case	4
No Eligible Participants	1
Unable to Locate or Moved	2
Client Request	1
Death of Participant	7
Failed to Provide Information	1
In Another Case	1
No Eligible Participants	1
Case Review Not Completed	1
Death of Participant	2
Not Considered a Resident of NE	1
Other	1
Closed Retro MED	1
Death of Participant	1
In Another Case	1
No Eligible Participants	1
Death of Participant	2
Death of Participant	3
Death of Participant	3
In Another Case	1
Case Review Not Completed	2
Closed Retro MED	1
Death of Participant	3
No Eligible Participants	1
Case Review Not Completed	1
Closed Retro MED	2
Death of Participant	2
Failed Living Arrangement	2
Failed to Provide Information	1
No Eligible Participants	1
Other	1
Unable to Locate or Moved	1
Case Review Not Completed	3
Death of Participant	3
Failed to Provide Information	1
In Another Case	4
No Eligible Participants	2
Case Review Not Completed	1
Death of Participant	7
Failed to Provide Information	1
In Another Case	1
Share of Cost Exceeds Need	1
Unable to Locate or Moved	1

Eligibility Period Ended	1
Eligibility Period Ended	1
Closed Retro MED	1
Death of Participant	3
No Eligible Participants	1
Client Request	1
In Another Case	1
No Eligible Participants	1
Closed Retro MED	2
Death of Participant	1
In Another Case	1
Failed to Provide Information	1
Death of Participant	2
Closed Retro MED	1
Death of Participant	1
Unable to Locate or Moved	1
Case Review Not Completed	1
Death of Participant	2
Death of Participant	1
No Eligible Participants	2
Closed Retro MED	1
No Eligible Participants	1
Death of Participant	1
No Eligible Participants	1
Unable to Locate or Moved	1
Death of Participant	1
Eligibility Period Ended	2
Eligibility Period Ended	1
Closed Retro MED	1
Death of Participant	2
In Another Case	1
Case Review Not Completed	1
Death of Participant	1
Ineligible Alien	1
Case Review Not Completed	1
Death of Participant	2
Unable to Locate or Moved	2
Death of Participant	1
Eligibility Period Ended	3
Eligibility Period Ended	3
Eligibility Period Ended	4
Death of Participant	2
In Another Case	1
No Eligible Participants	1
Death of Participant	2
Failed to Provide Information	2
Client Request	1
Death of Participant	1
In Another Case	2
Eligibility Period Ended	1
Eligibility Period Ended	2
Case Review Not Completed	1
Death of Participant	1
Death of Participant	3
Eligibility Requirements Not Met	1
Failed to Provide Information	1
No Eligible Participants	1
Share of Cost Exceeds Need	1
Death of Participant	1
Failed to Provide Information	1
No Eligible Participants	2

Eligibility Period Ended	2
Case Review Not Completed	1
Closed Retro MED	1
Death of Participant	4
Failed Living Arrangement	1
No Eligible Participants	1
Death of Participant	3
Case Review Not Completed	1
Death of Participant	2
In Another Case	1
Eligibility Period Ended	3
Eligibility Period Ended	7
Eligibility Period Ended	3
Not Considered a Resident of NE	1
Eligibility Period Ended	1
Case Review Not Completed	1
Death of Participant	4
Failed to Provide Information	1
In Another Case	2
Case Review Not Completed	3
Client Request	1
Death of Participant	2
Failed to Provide Information	2
No Eligible Participants	1
Other	1
Client Request	1
Death of Participant	3
Failed to Provide Information	1
Case Review Not Completed	1
No Eligible Participants	1
Unable to Locate or Moved	1
Case Review Not Completed	1
Closed Retro MED	1
Death of Participant	2
Not Considered a Resident of NE	1
Closed Retro MED	1
Not Disabled Or Blind	1
Unable to Locate or Moved	1
Eligibility Period Ended	3
Eligibility Period Ended	5
Eligibility Period Ended	2
No Eligible Participants	1
Case Review Not Completed	1
Closed Retro MED	1
Death of Participant	7
Failed to Provide Information	2
In Another Case	1
Not Considered a Resident of NE	1
Share of Cost Exceeds Need	2
Unable to Locate or Moved	1
Case Review Not Completed	2
Death of Participant	6
Failed to Provide Information	1
In Another Case	1
Share of Cost Exceeds Need	1
Case Review Not Completed	2
Death of Participant	7
Failed to Provide Information	3
No Eligible Participants	1
Case Review Not Completed	1
Failed to Provide Information	1

In Another Case	1
Death of Participant	2
Death of Participant	1
Failed to Provide Information	1
Eligibility Period Ended	7
Eligibility Requirements Not Met	1
Creditable Coverage	1
Eligibility Period Ended	3
Eligibility Period Ended	5
No Eligible Participants	1
Case Review Not Completed	2
Closed Retro MED	5
Death of Participant	8
Failed Living Arrangement	1
In Another Case	2
No Eligible Participants	1
Case Review Not Completed	2
Client Request	1
Closed Retro MED	3
Death of Participant	15
Failed to Provide Information	3
In Another Case	1
Not Disabled Or Blind	1
Other	1
Case Review Not Completed	3
Death of Participant	13
Failed Living Arrangement	1
In Another Case	2
No Eligible Participants	1
Not Disabled Or Blind	1
Share of Cost Exceeds Need	1
Unable to Locate or Moved	1
Death of Participant	2
Eligibility Period Ended	52
Eligibility Requirements Not Met	3
Creditable Coverage	2
Death of Participant	3
Eligibility Period Ended	63
Eligibility Requirements Not Met	1
Failed to Provide Information	2
Income Exceeds Standards	1
Death of Participant	3
Eligibility Period Ended	40
Applying For/Receiving Other Assistance	1
Eligibility Period Ended	4
Failed to Provide Information	3
No Eligible Participants	12
Other	1
Unable to Locate or Moved	1
All Authorized Benefits Have Been Received	1
Eligibility Period Ended	3
Failed to Provide Information	6
Incarceration	1
No Eligible Participants	10
Other	1
Client Request	2
Eligibility Requirements Not Met	4
Failed to Provide Information	5
No Eligible Participants	10
Other	2
Applying For/Receiving Other Assistance	2

Case Review Not Completed	39
Client Request	2
Closed Retro MED	31
Death of Participant	79
Eligibility Requirements Not Met	8
Failed Living Arrangement	14
Failed to Provide Information	31
In Another Case	28
Ineligible Alien	2
No Eligible Participants	3
Not Considered a Resident of NE	2
Not Disabled Or Blind	1
Other	2
Sanctioned	1
Share of Cost Exceeds Need	5
Unable to Locate or Moved	8
Applying For/Receiving Other Assistance	1
Case Review Not Completed	48
Client Request	5
Closed Retro MED	21
Death of Participant	71
Eligibility Requirements Not Met	3
Failed Living Arrangement	16
Failed to Provide Information	33
In Another Case	29
No Eligible Participants	6
Not Considered a Resident of NE	7
Not Disabled Or Blind	3
Other	3
Sanctioned	1
Share of Cost Exceeds Need	3
Unable to Locate or Moved	21
Applying For/Receiving Other Assistance	2
Case Review Not Completed	42
Client Request	1
Closed Retro MED	8
Death of Participant	58
Eligibility Requirements Not Met	6
Failed Living Arrangement	3
Failed to Provide Information	38
In Another Case	23
No Eligible Participants	5
Not Considered a Resident of NE	3
Not Disabled Or Blind	1
Other	2
Sanctioned	1
Share of Cost Exceeds Need	5
Unable to Locate or Moved	17
Death of Participant	1
Unable to Locate or Moved	1
Death of Participant	1
Case Review Not Completed	1
Death of Participant	5
No Eligible Participants	2
Death of Participant	1
In Another Case	1
Other	1
Failed to Provide Information	1
Case Review Not Completed	1
Death of Participant	1
Failed to Provide Information	1

No Eligible Participants	1
Death of Participant	1
Failed to Provide Information	1
Closed Retro MED	2
Closed Retro MED	1
Unable to Locate or Moved	1
Case Review Not Completed	2
Closed Retro MED	1
Death of Participant	1
Failed to Provide Information	1
Case Review Not Completed	2
Death of Participant	2
Eligibility Requirements Not Met	1
Case Review Not Completed	1
Death of Participant	2
Case Review Not Completed	3
Closed Retro MED	4
Death of Participant	5
Failed to Provide Information	1
Closed Retro MED	1
Death of Participant	10
Failed to Provide Information	1
In Another Case	2
No Eligible Participants	2
Death of Participant	9
In Another Case	1
No Eligible Participants	1
Share of Cost Exceeds Need	1
Unable to Locate or Moved	1
Failed to Provide Information	1
Death of Participant	1
Case Review Not Completed	1
Death of Participant	1
Transfer / Deprivation of Resources After 2/8/2006	1
Death of Participant	2
Closed Retro MED	1
Case Review Not Completed	1
Closed Retro MED	1
Case Review Not Completed	1
Eligibility Period Ended	3
Eligibility Requirements Not Met	2
In Another Case	1
Death of Participant	1
Eligibility Period Ended	5
Death of Participant	1
Eligibility Period Ended	9
No Eligible Participants	1
Applying For/Receiving Other Assistance	1
Case Review Not Completed	4
Closed Retro MED	5
Death of Participant	7
Eligibility Requirements Not Met	1
Failed to Provide Information	3
In Another Case	1
No Eligible Participants	2
Closed Retro MED	1
Death of Participant	10
Eligibility Requirements Not Met	1
Failed to Provide Information	7
In Another Case	2
No Eligible Participants	1

Not Considered a Resident of NE	1
Other	2
Share of Cost Exceeds Need	1
Unable to Locate or Moved	1
Case Review Not Completed	1
Death of Participant	8
Eligibility Requirements Not Met	1
Failed to Provide Information	5
In Another Case	1
No Eligible Participants	1
Not Considered a Resident of NE	1
Not Disabled Or Blind	1
Unable to Locate or Moved	1
Death of Participant	1
In Another Case	1
Death of Participant	1
Failed to Provide Information	1
In Another Case	1
Death of Participant	2
Failed to Provide Information	1
No Eligible Participants	1
Closed Retro MED	1
Death of Participant	1
Case Review Not Completed	1
Death of Participant	2
Not Disabled Or Blind	1
Eligibility Requirements Not Met	1
Closed Retro MED	1
Death of Participant	1
Failed to Provide Information	1
In Another Case	1
Death of Participant	1
Other	1
Case Review Not Completed	1
Closed Retro MED	2
Failed to Provide Information	2
Other	1
Unable to Locate or Moved	1
Case Review Not Completed	1
Death of Participant	2
Failed to Provide Information	1
No Eligible Participants	1
Case Review Not Completed	1
Death of Participant	2
No Eligible Participants	1
Death of Participant	1
Death of Participant	1
Death of Participant	3
In Another Case	1
No Eligible Participants	2
Case Review Not Completed	1
Client Request	1
Death of Participant	2
Closed Retro MED	1
Death of Participant	3
Failed to Provide Information	1
In Another Case	1
No Eligible Participants	2
Not Disabled Or Blind	1
Share of Cost Exceeds Need	1
Case Review Not Completed	2

Death of Participant	4
Eligibility Requirements Not Met	1
Share of Cost Exceeds Need	1
Eligibility Period Ended	1
Case Review Not Completed	1
Failed to Provide Information	1
In Another Case	1
Death of Participant	3
Unable to Locate or Moved	1
Not Considered a Resident of NE	1
Eligibility Period Ended	1
Eligibility Period Ended	1
Death of Participant	6
No Eligible Participants	1
Death of Participant	1
Death of Participant	2
Eligibility Period Ended	1
Case Review Not Completed	2
Closed Retro MED	1
Death of Participant	1
In Another Case	1
Not Disabled Or Blind	1
Death of Participant	2
Failed Living Arrangement	1
Closed Retro MED	1
Failed to Provide Information	1
Unable to Locate or Moved	1
Case Review Not Completed	1
Failed to Provide Information	1
In Another Case	1
Case Review Not Completed	1
Death of Participant	2
Case Review Not Completed	1
Failed to Provide Information	1
Death of Participant	1
Death of Participant	1
Failed to Provide Information	1
Death of Participant	1
In Another Case	1
Not Disabled Or Blind	1
Death of Participant	1
Eligibility Period Ended	7
In Another Case	1
Not Considered a Resident of NE	1
Eligibility Period Ended	6
Eligibility Requirements Not Met	1
Creditable Coverage	1
Eligibility Period Ended	6
Eligibility Requirements Not Met	2
Failed to Provide Information	2
No Eligible Participants	11
Other	1
Failed to Provide Information	2
Income Exceeds Standards	2
No Eligible Participants	7
Other	1
Unable to Locate or Moved	1
Failed to Provide Information	4
Income Exceeds Standards	1
No Eligible Participants	20
System Generated	1

Case Review Not Completed	11
Client Request	2
Closed Retro MED	20
Death of Participant	31
Eligibility Requirements Not Met	2
Failed Living Arrangement	5
Failed to Provide Information	11
In Another Case	19
Ineligible Alien	1
No Eligible Participants	5
Not Considered a Resident of NE	4
Not Disabled Or Blind	3
Other	1
Share of Cost Exceeds Need	4
Unable to Locate or Moved	5
Case Review Not Completed	15
Client Request	5
Closed Retro MED	7
Death of Participant	41
Eligibility Requirements Not Met	2
Failed Living Arrangement	6
Failed to Provide Information	18
In Another Case	16
No Eligible Participants	4
Not Considered a Resident of NE	1
Other	1
Share of Cost Exceeds Need	1
Unable to Locate or Moved	9
Case Review Not Completed	8
Client Request	2
Closed Retro MED	3
Death of Participant	32
Eligibility Requirements Not Met	2
Failed Living Arrangement	1
Failed to Provide Information	26
In Another Case	5
No Eligible Participants	4
Other	2
Sanctioned	1
Share of Cost Exceeds Need	1
Unable to Locate or Moved	5
Eligibility Period Ended	1
Case Review Not Completed	2
Client Request	1
Closed Retro MED	2
Death of Participant	6
Failed to Provide Information	2
In Another Case	3
Not Considered a Resident of NE	1
Share of Cost Exceeds Need	1
Case Review Not Completed	4
Closed Retro MED	2
Death of Participant	4
Failed to Provide Information	2
In Another Case	1
Case Review Not Completed	3
Death of Participant	4
Failed to Provide Information	5
Unable to Locate or Moved	1
Eligibility Period Ended	1
Eligibility Period Ended	1

Eligibility Period Ended	3
In Another Case	1
Case Review Not Completed	1
Closed Retro MED	1
Death of Participant	5
Eligibility Requirements Not Met	1
In Another Case	1
No Eligible Participants	3
Case Review Not Completed	3
Closed Retro MED	4
Death of Participant	6
In Another Case	2
Unable to Locate or Moved	1
Case Review Not Completed	3
Death of Participant	6
Failed to Provide Information	1
No Eligible Participants	2
Not Disabled Or Blind	2
Share of Cost Exceeds Need	1
Case Review Not Completed	2
Death of Participant	3
No Eligible Participants	1
Death of Participant	1
Failed Living Arrangement	1
No Eligible Participants	1
Not Considered a Resident of NE	1
Death of Participant	3
Failed Living Arrangement	1
Not Considered a Resident of NE	1
Unable to Locate or Moved	1
Eligibility Period Ended	1
Case Review Not Completed	1
Death of Participant	1
Death Spenddown Met	1
Failed to Provide Information	1
Death of Participant	1
Death of Participant	1
Death of Participant	2
Death of Participant	3
Failed to Provide Information	2
In Another Case	1
Closed Retro MED	1
Death of Participant	3
Failed to Provide Information	1
No Eligible Participants	1
Not Considered a Resident of NE	1
Not Disabled Or Blind	1
Closed Retro MED	2
Death of Participant	1
Eligibility Requirements Not Met	1
Failed to Provide Information	1
Case Review Not Completed	1
Death of Participant	1
Eligibility Period Ended	2
Eligibility Period Ended	1
No Eligible Participants	1
Case Review Not Completed	1
Closed Retro MED	1
Death of Participant	3
No Eligible Participants	1
Unable to Locate or Moved	1

Case Review Not Completed	1
Death of Participant	5
Failed to Provide Information	1
In Another Case	1
No Eligible Participants	2
Case Review Not Completed	3
Death of Participant	6
Failed to Provide Information	2
No Eligible Participants	1
Case Review Not Completed	1
Client Request	13
Failed Living Arrangement	1
Failed to Provide Information	2
In Another Case	1
Not Considered a Resident of NE	31
Unable to Locate or Moved	20
Case Review Not Completed	2
Client Request	3
Failed to Provide Information	3
In Another Case	3
Not Considered a Resident of NE	54
Unable to Locate or Moved	30
Case Review Not Completed	2
Client Request	5
Death of Participant	1
Eligibility Requirements Not Met	1
Failed Living Arrangement	3
In Another Case	1
Not Considered a Resident of NE	39
Unable to Locate or Moved	18
Closed Retro MED	1
Failed to Provide Information	1
Death of Participant	2
Case Review Not Completed	1
Death of Participant	1
Case Review Not Completed	1
Death of Participant	2
No Eligible Participants	1
Eligibility Period Ended	1
Death of Participant	2
Share of Cost Exceeds Need	1
Case Review Not Completed	1
Death of Participant	3
Eligibility Requirements Not Met	1
Failed to Provide Information	2
Closed Retro MED	1
Death of Participant	2
Eligibility Requirements Not Met	1
Closed Retro MED	1
Death of Participant	1
Death of Participant	3
Not Considered a Resident of NE	1
Death of Participant	3
No Eligible Participants	2
Eligibility Period Ended	1
Eligibility Requirements Not Met	1
Eligibility Period Ended	2
Failed to Provide Information	1
Eligibility Period Ended	6
No Eligible Participants	1
Case Review Not Completed	1

Death of Participant	3
In Another Case	1
No Eligible Participants	1
Closed Retro MED	1
Death of Participant	4
Failed to Provide Information	1
No Eligible Participants	2
Not Disabled Or Blind	1
Share of Cost Exceeds Need	1
Unable to Locate or Moved	1
Death of Participant	5
Failed to Provide Information	2
No Eligible Participants	1
Other	1
Unable to Locate or Moved	1
Death of Participant	1
Death Spenddown Met	1
Death of Participant	1
Failed Living Arrangement	1
No Eligible Participants	1
Eligibility Period Ended	1
Eligibility Period Ended	1
Case Review Not Completed	1
Death of Participant	1
Failed to Provide Information	1
Unable to Locate or Moved	1
Case Review Not Completed	1
Closed Retro MED	3
No Eligible Participants	1
Unable to Locate or Moved	1
Death of Participant	3
Failed to Provide Information	1
In Another Case	1
Case Review Not Completed	1
Closed Retro MED	1
Death of Participant	1
Failed to Provide Information	2
In Another Case	1
No Eligible Participants	1
Case Review Not Completed	1
Closed Retro MED	1
Death of Participant	2
Failed to Provide Information	1
Not Considered a Resident of NE	1
Death of Participant	1
No Eligible Participants	1
Share of Cost Exceeds Need	1
Death of Participant	1
Not Disabled Or Blind	1
Death of Participant	1
Eligibility Period Ended	3
Death of Participant	1
Eligibility Period Ended	2
Eligibility Period Ended	2
In Another Case	1
Other	1
In Another Case	1
Not Disabled Or Blind	1
Case Review Not Completed	1
Closed Retro MED	1
Death of Participant	5

Failed to Provide Information	1
Death of Participant	2
Eligibility Requirements Not Met	1
Failed to Provide Information	1
No Eligible Participants	1
Case Review Not Completed	1
Closed Retro MED	1
Death of Participant	5
In Another Case	1
Eligibility Period Ended	3
Eligibility Period Ended	1
Eligibility Period Ended	6
In Another Case	1
Eligibility Period Ended	1
Failed to Provide Information	4
In Another Case	1
No Eligible Participants	2
Other	1
Failed to Provide Information	2
No Eligible Participants	3
Other	1
Failed to Provide Information	1
No Eligible Participants	2
Case Review Not Completed	6
Client Request	1
Closed Retro MED	7
Death of Participant	2
Failed Living Arrangement	1
Failed to Provide Information	5
Ineligible Alien	1
No Eligible Participants	5
Not Considered a Resident of NE	2
Case Review Not Completed	3
Client Request	1
Closed Retro MED	4
Death of Participant	4
Eligibility Requirements Not Met	1
Failed Living Arrangement	1
Failed to Provide Information	8
In Another Case	2
No Eligible Participants	3
Not Disabled Or Blind	1
Share of Cost Exceeds Need	1
Unable to Locate or Moved	2
Applying For/Receiving Other Assistance	3
Case Review Not Completed	4
Death of Participant	8
Failed to Provide Information	9
In Another Case	3
Not Considered a Resident of NE	1
Unable to Locate or Moved	3
Closed Retro MED	3
Death of Participant	4
Failed to Provide Information	2
In Another Case	2
Case Review Not Completed	1
Death of Participant	6
Unable to Locate or Moved	1
Case Review Not Completed	3
Death of Participant	5
Failed to Provide Information	1

Transfer / Deprivation of Resources After 2/8/2006	1
Unable to Locate or Moved	1
Eligibility Period Ended	1
Eligibility Period Ended	2
No Eligible Participants	2
Failed to Provide Information	1
No Eligible Participants	1
Case Review Not Completed	3
Death of Participant	6
Failed to Provide Information	3
In Another Case	2
Ineligible Alien	1
Other	1
Share of Cost Exceeds Need	1
Case Review Not Completed	4
Client Request	2
Closed Retro MED	4
Death of Participant	6
Eligibility Requirements Not Met	1
Failed to Provide Information	3
In Another Case	4
No Eligible Participants	1
Not Considered a Resident of NE	2
Share of Cost Exceeds Need	1
Unable to Locate or Moved	2
Case Review Not Completed	4
Death of Participant	5
Eligibility Requirements Not Met	1
In Another Case	4
No Eligible Participants	2
Not Considered a Resident of NE	2
Unable to Locate or Moved	1
Case Review Not Completed	1
Death of Participant	6
Failed to Provide Information	1
In Another Case	1
Closed Retro MED	1
Death of Participant	3
In Another Case	1
No Eligible Participants	1
Death of Participant	3
No Eligible Participants	1
Case Review Not Completed	2
Death of Participant	1
Case Review Not Completed	1
Death of Participant	1
Failed to Provide Information	1
Not Considered a Resident of NE	1
Closed Retro MED	1
In Another Case	1
Death of Participant	1
Failed to Provide Information	1
Death of Participant	1
Failed to Provide Information	1
Death of Participant	3
Death of Participant	3
No Eligible Participants	1
Death of Participant	2
Death of Participant	3
Failed to Provide Information	1
In Another Case	1

No Eligible Participants	1
Death of Participant	2
Failed to Provide Information	1
Client Request	1
Not Disabled Or Blind	1
Closed Retro MED	2
Death of Participant	2
Failed to Provide Information	1
In Another Case	1
Closed Retro MED	2
Death of Participant	1
Not Disabled Or Blind	1
Death of Participant	2
Failed to Provide Information	1
In Another Case	1
Unable to Locate or Moved	1
Death of Participant	1
Death of Participant	1
Case Review Not Completed	1
Death of Participant	6
Failed to Provide Information	1
Case Review Not Completed	1
Death of Participant	4
Failed to Provide Information	1
No Eligible Participants	1
Case Review Not Completed	2
Client Request	1
Death of Participant	2
Failed to Provide Information	1
No Eligible Participants	1
Eligibility Period Ended	2
Eligibility Period Ended	1
Eligibility Period Ended	1
In Another Case	1
Closed Retro MED	1
Death of Participant	1
Failed Living Arrangement	1
No Eligible Participants	1
Death of Participant	3
Failed to Provide Information	1
In Another Case	1
Case Review Not Completed	1
In Another Case	1
No Eligible Participants	2
Death of Participant	1
In Another Case	1
Case Review Not Completed	2
Death of Participant	2
Failed to Provide Information	1
Case Review Not Completed	2
Death of Participant	4
Share of Cost Exceeds Need	1
Eligibility Requirements Not Met	1
Eligibility Period Ended	1
Death of Participant	2
Failed to Provide Information	1
No Eligible Participants	1
Not Considered a Resident of NE	1
Unable to Locate or Moved	1
Case Review Not Completed	2
Death of Participant	5

Failed to Provide Information	1
Not Considered a Resident of NE	2
Case Review Not Completed	1
Death of Participant	1
In Another Case	2
Death of Participant	5
Eligibility Period Ended	101
Eligibility Requirements Not Met	8
In Another Case	2
Not Considered a Resident of NE	1
Creditable Coverage	3
Death of Participant	6
Eligibility Period Ended	111
Eligibility Requirements Not Met	2
Failed to Provide Information	3
In Another Case	1
Income Exceeds Standards	1
Creditable Coverage	1
Death of Participant	4
Eligibility Period Ended	97
Eligibility Requirements Not Met	2
In Another Case	1
Not Considered a Resident of NE	1
Other	1
Applying For/Receiving Other Assistance	1
Eligibility Period Ended	5
Failed to Provide Information	9
In Another Case	3
No Eligible Participants	30
Other	5
Unable to Locate or Moved	1
All Authorized Benefits Have Been Received	1
Eligibility Period Ended	4
Failed to Provide Information	12
In Another Case	2
Incarceration	1
Income Exceeds Standards	2
No Eligible Participants	24
Other	3
Unable to Locate or Moved	1
Client Request	2
Eligibility Requirements Not Met	4
Failed to Provide Information	11
In Another Case	1
Income Exceeds Standards	1
No Eligible Participants	35
Not Disabled Or Blind	1
Other	4
System Generated	1
Applying For/Receiving Other Assistance	3
Case Review Not Completed	110
Client Request	21
Closed Retro MED	119
Death of Participant	275
Death Spenddown Met	1
Eligibility Requirements Not Met	13
Failed Living Arrangement	28
Failed to Provide Information	87
In Another Case	82
Ineligible Alien	5
No Eligible Participants	31

Not Considered a Resident of NE	45
Not Disabled Or Blind	6
Other	8
Sanctioned	1
Share of Cost Exceeds Need	15
Transfer / Deprivation of Resources After 2/8/2006	1
Unable to Locate or Moved	43
Applying For/Receiving Other Assistance	1
Case Review Not Completed	116
Client Request	20
Closed Retro MED	64
Death of Participant	315
Death Spenddown Met	1
Eligibility Requirements Not Met	12
Failed Living Arrangement	26
Failed to Provide Information	109
In Another Case	90
Ineligible Alien	1
No Eligible Participants	47
Not Considered a Resident of NE	74
Not Disabled Or Blind	9
Other	8
Sanctioned	1
Share of Cost Exceeds Need	11
Unable to Locate or Moved	77
Applying For/Receiving Other Assistance	5
Case Review Not Completed	103
Client Request	15
Closed Retro MED	18
Death of Participant	268
Eligibility Requirements Not Met	15
Failed Living Arrangement	10
Failed to Provide Information	110
In Another Case	59
No Eligible Participants	35
Not Considered a Resident of NE	48
Not Disabled Or Blind	9
Other	5
Sanctioned	2
Share of Cost Exceeds Need	13
Transfer / Deprivation of Resources After 2/8/2006	1
Unable to Locate or Moved	59

Applications received October 01, 2014 to October 31, 2014

	# First Time Applicants	Percentage	# Applicants Re-applying	Percentage	County Totals
Adams	8	11.94%	59	88.06%	67
Antelope	2	9.52%	19	90.48%	21
Banner	0	0.00%	5	100.00%	5
Blaine	0	0.00%	5	100.00%	5
Box Butte	3	7.14%	39	92.86%	42
Boyd	0	0.00%	7	100.00%	7
Brown	0	0.00%	13	100.00%	13
Buffalo	7	6.25%	105	93.75%	112
Burt	0	0.00%	12	100.00%	12
Butler	1	7.69%	12	92.31%	13
Cass	8	22.22%	28	77.78%	36
Cedar	2	33.33%	4	66.67%	6
Chase	0	0.00%	2	100.00%	2
Cherry	2	9.52%	19	90.48%	21
Cheyenne	7	20.00%	28	80.00%	35
Clay	2	9.09%	20	90.91%	22
Colfax	10	15.63%	54	84.38%	64
Cuming	3	42.86%	4	57.14%	7
Custer	2	14.29%	12	85.71%	14
Dakota	25	28.74%	62	71.26%	87
Dawes	3	13.64%	19	86.36%	22
Dawson	25	20.49%	97	79.51%	122
Deuel	0	0.00%	3	100.00%	3
Dixon	0	0.00%	3	100.00%	3
Dodge	14	10.37%	121	89.63%	135
Douglas	216	13.33%	1405	86.67%	1621
Dundy	1	25.00%	3	75.00%	4
Fillmore	0	0.00%	10	100.00%	10
Franklin	4	30.77%	9	69.23%	13
Frontier	0	0.00%	2	100.00%	2
Furnas	4	23.53%	13	76.47%	17
Gage	3	5.56%	51	94.44%	54
Garden	0	0.00%	14	100.00%	14
Garfield	0	0.00%	8	100.00%	8
Gosper	0	0.00%	2	100.00%	2
Grant	0	0.00%	1	100.00%	1
Greeley	3	100.00%	0	0.00%	3
Hall	33	14.73%	191	85.27%	224
Hamilton	1	7.69%	12	92.31%	13
Harlan	1	11.11%	8	88.89%	9
Hayes	3	100.00%	0	0.00%	3
Hitchcock	0	0.00%	4	100.00%	4
Holt	5	62.50%	3	37.50%	8
Hooker	0	0.00%	4	100.00%	4
Howard	2	25.00%	6	75.00%	8
Jefferson	9	45.00%	11	55.00%	20
Johnson	0	0.00%	1	100.00%	1
Kearney	0	0.00%	8	100.00%	8
Keith	3	16.67%	15	83.33%	18
Kimball	0	0.00%	9	100.00%	9
Knox	7	25.93%	20	74.07%	27
Lancaster	84	14.51%	495	85.49%	579
Lincoln	19	17.43%	90	82.57%	109
Logan	2	50.00%	2	50.00%	4
Loup	0	0.00%	4	100.00%	4
Madison	13	9.49%	124	90.51%	137
Merrick	0	0.00%	20	100.00%	20
Morrill	4	36.36%	7	63.64%	11
Nance	0	0.00%	6	100.00%	6
Nemaha	0	0.00%	16	100.00%	16
Nuckolls	0	0.00%	8	100.00%	8

	# First Time Applicants	Percentage	# Applicants Re-applying	Percentage	County Totals
Otoe	1	5.56%	17	94.44%	18
Out-of-state	1	25.00%	3	75.00%	4
Pawnee	0	0.00%	3	100.00%	3
Perkins	1	12.50%	7	87.50%	8
Phelps	5	23.81%	16	76.19%	21
Pierce	0	0.00%	6	100.00%	6
Platte	12	13.64%	76	86.36%	88
Polk	2	15.38%	11	84.62%	13
Red Willow	3	27.27%	8	72.73%	11
Richardson	4	16.67%	20	83.33%	24
Rock	0	0.00%	4	100.00%	4
Saline	3	7.50%	37	92.50%	40
Sarpy	45	15.79%	240	84.21%	285
Saunders	5	17.24%	24	82.76%	29
Scotts Bluff	11	10.28%	96	89.72%	107
Seward	5	20.83%	19	79.17%	24
Sheridan	2	13.33%	13	86.67%	15
Sherman	2	18.18%	9	81.82%	11
Stanton	6	40.00%	9	60.00%	15
Thayer	3	33.33%	6	66.67%	9
Thurston	1	0.85%	116	99.15%	117
Valley	0	0.00%	3	100.00%	3
Washington	3	12.50%	21	87.50%	24
Wayne	2	11.76%	15	88.24%	17
Webster	2	25.00%	6	75.00%	8
York	0	0.00%	32	100.00%	32
Report Totals:	660	13.72%	4151	86.28%	4811

Note: If a county is not listed, that indicates that no applications were received for the report month.

Applications received November 01, 2014 to November 30, 2014

	# First Time Applicants	Percentage	# Applicants Re-applying	Percentage	County Totals
Adams	13	14.94%	74	85.06%	87
Antelope	2	16.67%	10	83.33%	12
Arthur	0	0.00%	3	100.00%	3
Boone	2	18.18%	9	81.82%	11
Box Butte	7	11.11%	56	88.89%	63
Boyd	0	0.00%	1	100.00%	1
Brown	1	11.11%	8	88.89%	9
Buffalo	6	6.59%	85	93.41%	91
Burt	1	20.00%	4	80.00%	5
Butler	2	10.00%	18	90.00%	20
Cass	5	10.42%	43	89.58%	48
Cedar	0	0.00%	14	100.00%	14
Chase	0	0.00%	7	100.00%	7
Cherry	2	18.18%	9	81.82%	11
Cheyenne	1	3.70%	26	96.30%	27
Clay	3	10.00%	27	90.00%	30
Colfax	14	32.56%	29	67.44%	43
Cuming	2	10.00%	18	90.00%	20
Custer	5	27.78%	13	72.22%	18
Dakota	14	15.56%	76	84.44%	90
Dawes	1	7.14%	13	92.86%	14
Dawson	18	22.22%	63	77.78%	81
Deuel	0	0.00%	3	100.00%	3
Dixon	0	0.00%	10	100.00%	10
Dodge	12	9.84%	110	90.16%	122
Douglas	211	12.67%	1455	87.33%	1666
Dundy	0	0.00%	4	100.00%	4
Fillmore	2	20.00%	8	80.00%	10
Franklin	0	0.00%	4	100.00%	4
Frontier	0	0.00%	9	100.00%	9
Furnas	0	0.00%	13	100.00%	13
Gage	9	22.50%	31	77.50%	40
Garden	2	16.67%	10	83.33%	12
Garfield	0	0.00%	3	100.00%	3
Gosper	0	0.00%	4	100.00%	4
Grant	1	100.00%	0	0.00%	1
Greeley	0	0.00%	6	100.00%	6
Hall	21	9.86%	192	90.14%	213
Hamilton	0	0.00%	19	100.00%	19
Harlan	0	0.00%	5	100.00%	5
Hitchcock	4	20.00%	16	80.00%	20
Holt	2	11.11%	16	88.89%	18
Howard	0	0.00%	13	100.00%	13
Jefferson	8	50.00%	8	50.00%	16
Johnson	1	14.29%	6	85.71%	7
Kearney	10	37.04%	17	62.96%	27
Keith	3	16.67%	15	83.33%	18
Keya Paha	0	0.00%	1	100.00%	1
Kimball	2	28.57%	5	71.43%	7
Knox	2	7.14%	26	92.86%	28
Lancaster	95	14.44%	563	85.56%	658
Lincoln	19	21.11%	71	78.89%	90
Logan	4	100.00%	0	0.00%	4
Madison	15	15.63%	81	84.38%	96
Merrick	4	26.67%	11	73.33%	15
Morrill	0	0.00%	20	100.00%	20
Nance	0	0.00%	5	100.00%	5
Nemaha	2	13.33%	13	86.67%	15
Nuckolls	3	21.43%	11	78.57%	14
Otoe	5	16.13%	26	83.87%	31
Out-of-state	0	0.00%	4	100.00%	4

Applications received November 01, 2014 to November 30, 2014

	# First Time Applicants	Percentage	# Applicants Re-applying	Percentage	County Totals
Pawnee	0	0.00%	2	100.00%	2
Perkins	1	12.50%	7	87.50%	8
Phelps	3	17.65%	14	82.35%	17
Pierce	0	0.00%	13	100.00%	13
Platte	23	23.23%	76	76.77%	99
Polk	2	20.00%	8	80.00%	10
Red Willow	3	12.00%	22	88.00%	25
Richardson	5	31.25%	11	68.75%	16
Rock	0	0.00%	2	100.00%	2
Saline	7	15.91%	37	84.09%	44
Sarpy	56	17.45%	265	82.55%	321
Saunders	2	4.76%	40	95.24%	42
Scotts Bluff	11	7.01%	146	92.99%	157
Seward	1	4.00%	24	96.00%	25
Sheridan	2	18.18%	9	81.82%	11
Sherman	3	21.43%	11	78.57%	14
Stanton	0	0.00%	6	100.00%	6
Thayer	2	14.29%	12	85.71%	14
Thomas	1	100.00%	0	0.00%	1
Thurston	2	3.92%	49	96.08%	51
Valley	1	12.50%	7	87.50%	8
Washington	2	8.70%	21	91.30%	23
Wayne	1	6.25%	15	93.75%	16
Webster	0	0.00%	9	100.00%	9
York	1	2.27%	43	97.73%	44
Report Totals:	665	13.48%	4269	86.52%	4934

Note: If a county is not listed, that indicates that no applications were received for the report month.

Applications received December 01, 2014 to December 31, 2014

	# First Time		# Applicants		County Totals
	Applicants	Percentage	Re-applying	Percentage	
Adams	24	24.00%	76	76.00%	100
Antelope	1	10.00%	9	90.00%	10
Blaine	1	100.00%	0	0.00%	1
Boone	7	31.82%	15	68.18%	22
Box Butte	1	4.35%	22	95.65%	23
Boyd	0	0.00%	3	100.00%	3
Brown	1	14.29%	6	85.71%	7
Buffalo	15	16.13%	78	83.87%	93
Burt	2	11.11%	16	88.89%	18
Butler	0	0.00%	18	100.00%	18
Cass	3	12.00%	22	88.00%	25
Cedar	1	7.69%	12	92.31%	13
Chase	1	9.09%	10	90.91%	11
Cherry	0	0.00%	10	100.00%	10
Cheyenne	1	6.67%	14	93.33%	15
Clay	0	0.00%	28	100.00%	28
Colfax	4	13.33%	26	86.67%	30
Cuming	3	15.00%	17	85.00%	20
Custer	6	21.43%	22	78.57%	28
Dakota	12	19.67%	49	80.33%	61
Dawes	5	18.52%	22	81.48%	27
Dawson	3	5.56%	51	94.44%	54
Deuel	0	0.00%	6	100.00%	6
Dixon	0	0.00%	8	100.00%	8
Dodge	7	6.42%	102	93.58%	109
Douglas	196	13.32%	1276	86.68%	1472
Dundy	0	0.00%	2	100.00%	2
Fillmore	1	16.67%	5	83.33%	6
Franklin	4	19.05%	17	80.95%	21
Furnas	0	0.00%	10	100.00%	10
Gage	2	4.65%	41	95.35%	43
Garden	2	20.00%	8	80.00%	10
Garfield	0	0.00%	1	100.00%	1
Greeley	2	50.00%	2	50.00%	4
Hall	16	8.08%	182	91.92%	198
Hamilton	0	0.00%	6	100.00%	6
Harlan	0	0.00%	2	100.00%	2
Hayes	4	50.00%	4	50.00%	8
Hitchcock	1	50.00%	1	50.00%	2
Holt	5	22.73%	17	77.27%	22
Hooker	0	0.00%	5	100.00%	5
Howard	4	25.00%	12	75.00%	16
Jefferson	0	0.00%	13	100.00%	13
Johnson	1	6.67%	14	93.33%	15
Kearney	0	0.00%	11	100.00%	11
Keith	0	0.00%	22	100.00%	22
Kimball	2	40.00%	3	60.00%	5
Knox	2	8.70%	21	91.30%	23
Lancaster	98	15.34%	541	84.66%	639
Lincoln	4	5.56%	68	94.44%	72
Madison	9	9.09%	90	90.91%	99
McPherson	0	0.00%	1	100.00%	1
Merrick	0	0.00%	16	100.00%	16
Morrill	2	12.50%	14	87.50%	16
Nance	2	25.00%	6	75.00%	8
Nemaha	4	40.00%	6	60.00%	10
Nuckolls	3	25.00%	9	75.00%	12
Otoe	4	8.70%	42	91.30%	46
Out-of-state	1	50.00%	1	50.00%	2
Pawnee	3	75.00%	1	25.00%	4
Perkins	0	0.00%	2	100.00%	2

Applications received December 01, 2014 to December 31, 2014

	# First Time Applicants	Percentage	# Applicants Re-applying	Percentage	County Totals
Phelps	1	12.50%	7	87.50%	8
Pierce	3	25.00%	9	75.00%	12
Platte	14	19.44%	58	80.56%	72
Polk	0	0.00%	11	100.00%	11
Red Willow	3	10.71%	25	89.29%	28
Richardson	1	5.88%	16	94.12%	17
Saline	2	11.76%	15	88.24%	17
Sarpy	33	12.09%	240	87.91%	273
Saunders	4	7.02%	53	92.98%	57
Scotts Bluff	18	16.67%	90	83.33%	108
Seward	4	16.67%	20	83.33%	24
Sheridan	1	7.14%	13	92.86%	14
Sherman	0	0.00%	3	100.00%	3
Stanton	0	0.00%	9	100.00%	9
Thayer	2	50.00%	2	50.00%	4
Thurston	0	0.00%	49	100.00%	49
Valley	0	0.00%	4	100.00%	4
Washington	0	0.00%	30	100.00%	30
Wayne	3	15.79%	16	84.21%	19
Webster	0	0.00%	8	100.00%	8
York	2	5.71%	33	94.29%	35
Report Totals:	561	12.79%	3825	87.21%	4386

Note: If a county is not listed, that indicates that no applications were received for the report month.

October 2014

	<u>Total Tasks</u>	<u>Average Days to Complete</u>
<u>Priority: High</u>		
CHANGE MANAGEMENT	2564	1.37
INTERVIEWING/PROCESSING	2	141.00
PROCESSING	3565	2.15
<u>Priority: None</u>		
CHANGE MANAGEMENT	27687	11.71
INTERVIEWING/PROCESSING	45	4.80
PROCESSING	35364	10.98
SUPERVISOR REVIEW	13	5.85
LEAD SPECIFIC	13	2.15
APP MGMT ECON ASSIST	2	0.00
APP MGMT MEDICAID	141	0.19
October 2014	<hr/> 69396	<hr/> 10.44

November 2014

	<u>Total Tasks</u>	<u>Average Days to Complete</u>
<u>Priority: High</u>		
CHANGE MANAGEMENT	2148	1.30
PROCESSING	2534	1.98
<u>Priority: None</u>		
CHANGE MANAGEMENT	17035	11.98
INTERVIEWING/PROCESSING	38	2.13
PROCESSING	21962	8.96
SUPERVISOR REVIEW	4	5.00
LEAD SPECIFIC	11	1.00
APP MGMT MEDICAID	112	0.08
November 2014	<hr/> 43844	<hr/> 9.32

December 2014

	<u>Total Tasks</u>	<u>Average Days to Complete</u>
<u>Priority: High</u>		
CHANGE MANAGEMENT	2322	1.67
INTERVIEWING/PROCESSING	1	15.00
PROCESSING	2939	2.76
<u>Priority: None</u>		
CHANGE MANAGEMENT	24500	15.72
INTERVIEWING/PROCESSING	54	3.74
PROCESSING	30309	12.87
SUPERVISOR REVIEW	15	8.87
LEAD SPECIFIC	17	0.18
APP MGMT MEDICAID	119	0.00

December 2014

	60276	13.07
--	-------	-------

Summary For Quarter Reported

	173516	11.07
--	--------	-------

County	Number of Persons Closed effective 09/01/2014	Number of Persons who Re-Applied within 30 days		Number of Persons who Re-Applied within 60 days	
			Percentage		Percentage
<u>Adams</u>					
MEDICAID	7	0	0.00%	7	100.00%
599 CHIP	2	0	0.00%	0	0.00%
Total	9	0	0.00%	7	77.78%
<u>Antelope</u>					
599 CHIP	1	0	0.00%	0	0.00%
Total	1	0	0.00%	0	0.00%
<u>Box Butte</u>					
599 CHIP	1	0	0.00%	0	0.00%
Total	1	0	0.00%	0	0.00%
<u>Brown</u>					
MEDICAID	1	0	0.00%	1	100.00%
Total	1	0	0.00%	1	100.00%
<u>Buffalo</u>					
MEDICAID	4	0	0.00%	4	100.00%
Total	4	0	0.00%	4	100.00%
<u>Burt</u>					
MEDICAID	3	0	0.00%	3	100.00%
Total	3	0	0.00%	3	100.00%
<u>Cass</u>					
MEDICAID	1	0	0.00%	1	100.00%
599 CHIP	1	0	0.00%	0	0.00%
Total	2	0	0.00%	1	50.00%
<u>Cedar</u>					
599 CHIP	1	0	0.00%	0	0.00%
Total	1	0	0.00%	0	0.00%
<u>Colfax</u>					
599 CHIP	1	0	0.00%	0	0.00%
Total	1	0	0.00%	0	0.00%
<u>Custer</u>					
MEDICAID	2	0	0.00%	2	100.00%
Total	2	0	0.00%	2	100.00%
<u>Dakota</u>					
MEDICAID	3	0	0.00%	3	100.00%
599 CHIP	2	0	0.00%	0	0.00%
Total	5	0	0.00%	3	60.00%
<u>Dawson</u>					
MEDICAID	7	0	0.00%	7	100.00%
599 CHIP	3	0	0.00%	0	0.00%
Total	10	0	0.00%	7	70.00%
<u>Dodge</u>					
MEDICAID	9	0	0.00%	9	100.00%
599 CHIP	6	0	0.00%	0	0.00%
Total	15	0	0.00%	9	60.00%
<u>Douglas</u>					
MEDICAID	109	1	0.92%	108	99.08%
599 CHIP	48	0	0.00%	0	0.00%
Total	157	1	0.64%	108	68.79%
<u>Gage</u>					
MEDICAID	2	0	0.00%	2	100.00%
599 CHIP	2	0	0.00%	0	0.00%
Total	4	0	0.00%	2	50.00%

County	Number of Persons Closed effective 09/01/2014	Number of Persons who Re-Applied within 30 days		Number of Persons who Re-Applied within 60 days	
			Percentage		Percentage
<u>Hall</u>					
MEDICAID	5	0	0.00%	5	100.00%
599 CHIP	11	0	0.00%	0	0.00%
Total	16	0	0.00%	5	31.25%
<u>Holt</u>					
MEDICAID	2	0	0.00%	2	100.00%
599 CHIP	1	0	0.00%	0	0.00%
Total	3	0	0.00%	2	66.67%
<u>Hooker</u>					
MEDICAID	3	0	0.00%	3	100.00%
Total	3	0	0.00%	3	100.00%
<u>Howard</u>					
MEDICAID	1	0	0.00%	1	100.00%
Total	1	0	0.00%	1	100.00%
<u>Jefferson</u>					
MEDICAID	4	0	0.00%	4	100.00%
Total	4	0	0.00%	4	100.00%
<u>Keith</u>					
MEDICAID	2	0	0.00%	2	100.00%
Total	2	0	0.00%	2	100.00%
<u>Knox</u>					
MEDICAID	2	0	0.00%	2	100.00%
Total	2	0	0.00%	2	100.00%
<u>Lancaster</u>					
MEDICAID	20	0	0.00%	20	100.00%
599 CHIP	7	0	0.00%	0	0.00%
Total	27	0	0.00%	20	74.07%
<u>Lincoln</u>					
MEDICAID	13	0	0.00%	13	100.00%
Total	13	0	0.00%	13	100.00%
<u>Madison</u>					
MEDICAID	12	1	8.33%	11	91.67%
599 CHIP	2	0	0.00%	0	0.00%
Total	14	1	7.14%	11	78.57%
<u>Morrill</u>					
MEDICAID	3	0	0.00%	3	100.00%
Total	3	0	0.00%	3	100.00%
<u>Nemaha</u>					
MEDICAID	4	0	0.00%	4	100.00%
Total	4	0	0.00%	4	100.00%
<u>Otoe</u>					
599 CHIP	1	0	0.00%	0	0.00%
Total	1	0	0.00%	0	0.00%
<u>Phelps</u>					
MEDICAID	3	0	0.00%	3	100.00%
Total	3	0	0.00%	3	100.00%
<u>Platte</u>					
MEDICAID	2	0	0.00%	2	100.00%
599 CHIP	1	0	0.00%	0	0.00%
Total	3	0	0.00%	2	66.67%

County	Number of Persons Closed effective 09/01/2014	Number of Persons who Re-Applied within 30 days		Number of Persons who Re-Applied within 60 days	
			Percentage		Percentage
<u>Richardson</u>					
MEDICAID	<u>3</u>	<u>0</u>	<u>0.00%</u>	<u>3</u>	<u>100.00%</u>
Total	3	0	0.00%	3	100.00%
<u>Saline</u>					
MEDICAID	<u>2</u>	<u>0</u>	<u>0.00%</u>	<u>2</u>	<u>100.00%</u>
599 CHIP	<u>2</u>	<u>0</u>	<u>0.00%</u>	<u>0</u>	<u>0.00%</u>
Total	4	0	0.00%	2	50.00%
<u>Sarpy</u>					
MEDICAID	<u>11</u>	<u>0</u>	<u>0.00%</u>	<u>11</u>	<u>100.00%</u>
599 CHIP	<u>5</u>	<u>0</u>	<u>0.00%</u>	<u>0</u>	<u>0.00%</u>
Total	16	0	0.00%	11	68.75%
<u>Scotts Bluff</u>					
MEDICAID	<u>7</u>	<u>0</u>	<u>0.00%</u>	<u>7</u>	<u>100.00%</u>
599 CHIP	<u>2</u>	<u>0</u>	<u>0.00%</u>	<u>0</u>	<u>0.00%</u>
Total	9	0	0.00%	7	77.78%
<u>Seward</u>					
MEDICAID	<u>4</u>	<u>0</u>	<u>0.00%</u>	<u>4</u>	<u>100.00%</u>
599 CHIP	<u>2</u>	<u>0</u>	<u>0.00%</u>	<u>0</u>	<u>0.00%</u>
Total	6	0	0.00%	4	66.67%
<u>Sherman</u>					
MEDICAID	<u>3</u>	<u>0</u>	<u>0.00%</u>	<u>3</u>	<u>100.00%</u>
Total	3	0	0.00%	3	100.00%
<u>York</u>					
599 CHIP	<u>1</u>	<u>0</u>	<u>0.00%</u>	<u>0</u>	<u>0.00%</u>
Total	1	0	0.00%	0	0.00%
State Totals	357	2	0.56%	252	70.59%

Note: If a county had no individuals closed for 09/01/2014, the county will not appear on the list. The county may have had individuals who applied for programs within 60 days of 09/01/2014, however they are not considered re-applications for benefits which were closed as of 09/01/2014.

The "Number of Persons Closed Effective..." column provides a reflective count of the individuals who were involved in each type of program case. The entries under "Total" are not a true reflection of the number of individuals closed due to an individual's possible participation in multiple programs.

County	Number of Persons Closed effective 10/01/2014	Number of Persons who Re-Applied within 30 days		Number of Persons who Re-Applied within 60 days	
			Percentage		Percentage
<u>Adams</u>					
MEDICAID	5	0	0.00%	5	100.00%
599 CHIP	1	0	0.00%	0	0.00%
Total	6	0	0.00%	5	83.33%
<u>Box Butte</u>					
MEDICAID	6	0	0.00%	6	100.00%
599 CHIP	1	0	0.00%	0	0.00%
Total	7	0	0.00%	6	85.71%
<u>Brown</u>					
MEDICAID	3	0	0.00%	3	100.00%
Total	3	0	0.00%	3	100.00%
<u>Buffalo</u>					
MEDICAID	1	0	0.00%	1	100.00%
599 CHIP	2	0	0.00%	0	0.00%
Total	3	0	0.00%	1	33.33%
<u>Butler</u>					
MEDICAID	1	0	0.00%	1	100.00%
Total	1	0	0.00%	1	100.00%
<u>Cass</u>					
MEDICAID	3	0	0.00%	3	100.00%
Total	3	0	0.00%	3	100.00%
<u>Cedar</u>					
599 CHIP	1	0	0.00%	0	0.00%
Total	1	0	0.00%	0	0.00%
<u>Clay</u>					
MEDICAID	4	0	0.00%	4	100.00%
599 CHIP	2	0	0.00%	0	0.00%
Total	6	0	0.00%	4	66.67%
<u>Colfax</u>					
MEDICAID	3	0	0.00%	3	100.00%
599 CHIP	4	0	0.00%	0	0.00%
Total	7	0	0.00%	3	42.86%
<u>Dakota</u>					
MEDICAID	5	0	0.00%	5	100.00%
599 CHIP	3	0	0.00%	0	0.00%
Total	8	0	0.00%	5	62.50%
<u>Dawes</u>					
MEDICAID	3	0	0.00%	3	100.00%
Total	3	0	0.00%	3	100.00%
<u>Dawson</u>					
MEDICAID	3	0	0.00%	3	100.00%
599 CHIP	3	0	0.00%	0	0.00%
Total	6	0	0.00%	3	50.00%
<u>Dodge</u>					
MEDICAID	3	0	0.00%	3	100.00%
599 CHIP	8	0	0.00%	0	0.00%
Total	11	0	0.00%	3	27.27%
<u>Douglas</u>					
MEDICAID	73	0	0.00%	73	100.00%
599 CHIP	57	0	0.00%	0	0.00%
Total	130	0	0.00%	73	56.15%

County	Number of Persons Closed effective 10/01/2014	Number of Persons who Re-Applied within 30 days		Number of Persons who Re-Applied within 60 days	
			Percentage		Percentage
<u>Fillmore</u>					
MEDICAID	<u>1</u>	<u>0</u>	<u>0.00%</u>	<u>1</u>	<u>100.00%</u>
Total	1	0	0.00%	1	100.00%
<u>Furnas</u>					
MEDICAID	<u>2</u>	<u>0</u>	<u>0.00%</u>	<u>2</u>	<u>100.00%</u>
Total	2	0	0.00%	2	100.00%
<u>Garfield</u>					
MEDICAID	<u>3</u>	<u>0</u>	<u>0.00%</u>	<u>3</u>	<u>100.00%</u>
Total	3	0	0.00%	3	100.00%
<u>Hall</u>					
MEDICAID	10	0	0.00%	10	100.00%
599 CHIP	<u>6</u>	<u>0</u>	<u>0.00%</u>	<u>0</u>	<u>0.00%</u>
Total	16	0	0.00%	10	62.50%
<u>Hayes</u>					
599 CHIP	<u>1</u>	<u>0</u>	<u>0.00%</u>	<u>0</u>	<u>0.00%</u>
Total	1	0	0.00%	0	0.00%
<u>Jefferson</u>					
MEDICAID	<u>1</u>	<u>0</u>	<u>0.00%</u>	<u>1</u>	<u>100.00%</u>
Total	1	0	0.00%	1	100.00%
<u>Kearney</u>					
MEDICAID	<u>3</u>	<u>0</u>	<u>0.00%</u>	<u>3</u>	<u>100.00%</u>
Total	3	0	0.00%	3	100.00%
<u>Kimball</u>					
MEDICAID	<u>1</u>	<u>0</u>	<u>0.00%</u>	<u>1</u>	<u>100.00%</u>
Total	1	0	0.00%	1	100.00%
<u>Knox</u>					
MEDICAID	<u>2</u>	<u>0</u>	<u>0.00%</u>	<u>2</u>	<u>100.00%</u>
Total	2	0	0.00%	2	100.00%
<u>Lancaster</u>					
MEDICAID	26	0	0.00%	26	100.00%
599 CHIP	<u>10</u>	<u>0</u>	<u>0.00%</u>	<u>0</u>	<u>0.00%</u>
Total	36	0	0.00%	26	72.22%
<u>Lincoln</u>					
MEDICAID	8	0	0.00%	8	100.00%
599 CHIP	<u>1</u>	<u>0</u>	<u>0.00%</u>	<u>0</u>	<u>0.00%</u>
Total	9	0	0.00%	8	88.89%
<u>Madison</u>					
599 CHIP	<u>1</u>	<u>0</u>	<u>0.00%</u>	<u>0</u>	<u>0.00%</u>
Total	1	0	0.00%	0	0.00%
<u>Morrill</u>					
599 CHIP	<u>1</u>	<u>0</u>	<u>0.00%</u>	<u>0</u>	<u>0.00%</u>
Total	1	0	0.00%	0	0.00%
<u>Otoe</u>					
MEDICAID	4	0	0.00%	4	100.00%
599 CHIP	<u>2</u>	<u>0</u>	<u>0.00%</u>	<u>0</u>	<u>0.00%</u>
Total	6	0	0.00%	4	66.67%
<u>Phelps</u>					
MEDICAID	2	0	0.00%	2	100.00%
599 CHIP	<u>1</u>	<u>0</u>	<u>0.00%</u>	<u>0</u>	<u>0.00%</u>
Total	3	0	0.00%	2	66.67%

County	Number of Persons Closed effective 10/01/2014	Number of Persons who Re-Applied within 30 days		Number of Persons who Re-Applied within 60 days	
			Percentage		Percentage
<u>Platte</u>					
MEDICAID	1	0	0.00%	1	100.00%
599 CHIP	2	0	0.00%	0	0.00%
Total	3	0	0.00%	1	33.33%
<u>Saline</u>					
599 CHIP	4	0	0.00%	0	0.00%
Total	4	0	0.00%	0	0.00%
<u>Sarpy</u>					
MEDICAID	9	0	0.00%	9	100.00%
599 CHIP	3	0	0.00%	0	0.00%
Total	12	0	0.00%	9	75.00%
<u>Saunders</u>					
MEDICAID	4	0	0.00%	4	100.00%
Total	4	0	0.00%	4	100.00%
<u>Scotts Bluff</u>					
MEDICAID	16	0	0.00%	16	100.00%
599 CHIP	1	0	0.00%	0	0.00%
Total	17	0	0.00%	16	94.12%
<u>Seward</u>					
MEDICAID	1	1	100.00%	0	0.00%
Total	1	1	100.00%	0	0.00%
<u>Sheridan</u>					
MEDICAID	1	0	0.00%	1	100.00%
Total	1	0	0.00%	1	100.00%
<u>Thurston</u>					
MEDICAID	1	0	0.00%	1	100.00%
Total	1	0	0.00%	1	100.00%
<u>Wayne</u>					
599 CHIP	2	0	0.00%	0	0.00%
Total	2	0	0.00%	0	0.00%
State Totals	326	1	0.31%	208	63.80%

Note: If a county had no individuals closed for 10/01/2014, the county will not appear on the list. The county may have had individuals who applied for programs within 60 days of 10/01/2014, however they are not considered re-applications for benefits which were closed as of 10/01/2014.

The "Number of Persons Closed Effective..." column provides a reflective count of the individuals who were involved in each type of program case. The entries under "Total" are not a true reflection of the number of individuals closed due to an individual's possible participation in multiple programs.

County	Number of Persons Closed effective 11/01/2014	Number of Persons who Re-Applied within 30 days		Number of Persons who Re-Applied within 60 days	
			Percentage		Percentage
<u>Adams</u>					
MEDICAID	7	0	0.00%	7	100.00%
599 CHIP	2	0	0.00%	0	0.00%
Total	9	0	0.00%	7	77.78%
<u>Antelope</u>					
MEDICAID	1	0	0.00%	1	100.00%
Total	1	0	0.00%	1	100.00%
<u>Box Butte</u>					
MEDICAID	2	0	0.00%	2	100.00%
Total	2	0	0.00%	2	100.00%
<u>Buffalo</u>					
MEDICAID	3	0	0.00%	3	100.00%
599 CHIP	3	0	0.00%	0	0.00%
Total	6	0	0.00%	3	50.00%
<u>Burt</u>					
MEDICAID	3	0	0.00%	3	100.00%
Total	3	0	0.00%	3	100.00%
<u>Butler</u>					
MEDICAID	5	0	0.00%	5	100.00%
Total	5	0	0.00%	5	100.00%
<u>Cedar</u>					
MEDICAID	3	0	0.00%	3	100.00%
599 CHIP	1	0	0.00%	0	0.00%
Total	4	0	0.00%	3	75.00%
<u>Cherry</u>					
MEDICAID	2	0	0.00%	2	100.00%
Total	2	0	0.00%	2	100.00%
<u>Clay</u>					
599 CHIP	1	0	0.00%	0	0.00%
Total	1	0	0.00%	0	0.00%
<u>Colfax</u>					
599 CHIP	3	0	0.00%	0	0.00%
Total	3	0	0.00%	0	0.00%
<u>Cuming</u>					
599 CHIP	1	0	0.00%	0	0.00%
Total	1	0	0.00%	0	0.00%
<u>Dakota</u>					
MEDICAID	10	0	0.00%	10	100.00%
599 CHIP	7	0	0.00%	0	0.00%
Total	17	0	0.00%	10	58.82%
<u>Dawson</u>					
MEDICAID	8	0	0.00%	8	100.00%
599 CHIP	5	0	0.00%	0	0.00%
Total	13	0	0.00%	8	61.54%
<u>Dixon</u>					
MEDICAID	2	0	0.00%	2	100.00%
Total	2	0	0.00%	2	100.00%
<u>Dodge</u>					
MEDICAID	8	0	0.00%	8	100.00%
599 CHIP	4	0	0.00%	0	0.00%
Total	12	0	0.00%	8	66.67%

County	Number of Persons Closed effective 11/01/2014	Number of Persons who Re-Applied within 30 days		Number of Persons who Re-Applied within 60 days	
			Percentage		Percentage
<u>Douglas</u>					
MEDICAID	104	1	0.96%	103	99.04%
599 CHIP	72	0	0.00%	0	0.00%
Total	176	1	0.57%	103	58.52%
<u>Franklin</u>					
MEDICAID	3	0	0.00%	3	100.00%
Total	3	0	0.00%	3	100.00%
<u>Hall</u>					
MEDICAID	5	0	0.00%	5	100.00%
599 CHIP	6	0	0.00%	0	0.00%
Total	11	0	0.00%	5	45.45%
<u>Hamilton</u>					
MEDICAID	5	0	0.00%	5	100.00%
Total	5	0	0.00%	5	100.00%
<u>Holt</u>					
599 CHIP	1	0	0.00%	0	0.00%
Total	1	0	0.00%	0	0.00%
<u>Johnson</u>					
599 CHIP	1	0	0.00%	0	0.00%
Total	1	0	0.00%	0	0.00%
<u>Kearney</u>					
MEDICAID	4	0	0.00%	4	100.00%
599 CHIP	1	0	0.00%	0	0.00%
Total	5	0	0.00%	4	80.00%
<u>Keith</u>					
MEDICAID	3	0	0.00%	3	100.00%
Total	3	0	0.00%	3	100.00%
<u>Knox</u>					
MEDICAID	3	0	0.00%	3	100.00%
Total	3	0	0.00%	3	100.00%
<u>Lancaster</u>					
MEDICAID	23	1	4.35%	22	95.65%
599 CHIP	7	0	0.00%	0	0.00%
Total	30	1	3.33%	22	73.33%
<u>Madison</u>					
599 CHIP	1	0	0.00%	0	0.00%
Total	1	0	0.00%	0	0.00%
<u>Morrill</u>					
MEDICAID	1	0	0.00%	1	100.00%
Total	1	0	0.00%	1	100.00%
<u>Otoe</u>					
599 CHIP	1	0	0.00%	0	0.00%
Total	1	0	0.00%	0	0.00%
<u>Platte</u>					
MEDICAID	1	0	0.00%	1	100.00%
599 CHIP	3	0	0.00%	0	0.00%
Total	4	0	0.00%	1	25.00%
<u>Polk</u>					
MEDICAID	1	0	0.00%	1	100.00%
Total	1	0	0.00%	1	100.00%

County	Number of Persons Closed effective 11/01/2014	Number of Persons who Re-Applied within 30 days		Number of Persons who Re-Applied within 60 days	
			Percentage		Percentage
<u>Red Willow</u>					
599 CHIP	<u>1</u>	<u>0</u>	<u>0.00%</u>	<u>0</u>	<u>0.00%</u>
Total	1	0	0.00%	0	0.00%
<u>Saline</u>					
MEDICAID	2	0	0.00%	2	100.00%
599 CHIP	<u>3</u>	<u>0</u>	<u>0.00%</u>	<u>0</u>	<u>0.00%</u>
Total	5	0	0.00%	2	40.00%
<u>Sarpy</u>					
MEDICAID	21	0	0.00%	21	100.00%
599 CHIP	<u>1</u>	<u>0</u>	<u>0.00%</u>	<u>0</u>	<u>0.00%</u>
Total	22	0	0.00%	21	95.45%
<u>Scotts Bluff</u>					
MEDICAID	<u>5</u>	<u>1</u>	<u>20.00%</u>	<u>4</u>	<u>80.00%</u>
Total	5	1	20.00%	4	80.00%
<u>Stanton</u>					
MEDICAID	<u>2</u>	<u>0</u>	<u>0.00%</u>	<u>2</u>	<u>100.00%</u>
Total	2	0	0.00%	2	100.00%
<u>Thurston</u>					
MEDICAID	<u>4</u>	<u>0</u>	<u>0.00%</u>	<u>4</u>	<u>100.00%</u>
Total	4	0	0.00%	4	100.00%
<u>Washington</u>					
MEDICAID	<u>3</u>	<u>0</u>	<u>0.00%</u>	<u>3</u>	<u>100.00%</u>
Total	3	0	0.00%	3	100.00%
<u>Wayne</u>					
599 CHIP	<u>1</u>	<u>0</u>	<u>0.00%</u>	<u>0</u>	<u>0.00%</u>
Total	1	0	0.00%	0	0.00%
<u>York</u>					
MEDICAID	4	0	0.00%	4	100.00%
599 CHIP	<u>1</u>	<u>0</u>	<u>0.00%</u>	<u>0</u>	<u>0.00%</u>
Total	5	0	0.00%	4	80.00%
State Totals	375	3	0.80%	245	65.33%

Note: If a county had no individuals closed for 11/01/2014, the county will not appear on the list. The county may have had individuals who applied for programs within 60 days of 11/01/2014, however they are not considered re-applications for benefits which were closed as of 11/01/2014.

The "Number of Persons Closed Effective..." column provides a reflective count of the individuals who were involved in each type of program case. The entries under "Total" are not a true reflection of the number of individuals closed due to an individual's possible participation in multiple programs.

Table 1. SOCIAL SERVICE WORKER/TRAINEE

	October 2014							November 2014						December 2014					
	Filled	# Filled	# Vacant	Total			Filled	# Filled	# Vacant	Total			Filled	# Filled	# Vacant	Total			
	FTE	Positions	Positions	Positions	Terms	Hires	FTE	Positions	Positions	Positions	Terms	Hires	FTE	Positions	Positions	Positions	Terms	Hires	
25744600 MLTC LINCOLN CSC PAY HOME	77.75	80	11	91	3	1	81.25	84	5	89	1	6	80.75	84	5	89	1	1	
25744400 MLTC LEXINGTON CSC PAY HOME	38.50	40	2	42	0	3	40.00	42	1	43	1	2	40.00	42	1	43	0	0	
25744100 MLTC METRO OMAHA PAY HOME	65.00	65	4	69	3	4	67.00	67	1	68	1	3	65.00	65	3	68	1	0	
25744200 MLTC METRO LINCOLN PAY HOME	27.00	27	0	27	0	0	27.00	27	0	27	0	0	27.00	27	0	27	0	0	
25744500 MLTC RURAL PAY HOME	56.50	57	2	59	0	2	55.50	56	2	58	1	0	57.50	58	0	58	0	2	
TOTAL	264.75	269	19	288	6	10	270.75	276	9	285	4	11	270.25	276	9	285	2	3	

*All numbers exclude frozen positions

**Filled FTE, # Filled Positions, and # Vacant Positions from monthly FTE Reports (pulled from Workday)

†Terms and Hires from monthly Terms-Hires Report (pulled from Workday)

Table 2. SOCIAL SERVICE LEAD WORKER

	October 2014							November 2014						December 2014					
	Filled	# Filled	# Vacant	Total			Filled	# Filled	# Vacant	Total			Filled	# Filled	# Vacant	Total			
	FTE	Positions	Positions	Positions	Terms	Hires	FTE	Positions	Positions	Positions	Terms	Hires	FTE	Positions	Positions	Positions	Terms	Hires	
25744600 MLTC LINCOLN CSC PAY HOME	9.00	9	1	10	0	0	10.00	10	0	10	0	0	10.00	10	0	10	0	0	
25744400 MLTC LEXINGTON CSC PAY HOME	5.00	5	0	5	0	0	5.00	5	0	5	0	0	4.00	4	1	5	0	0	
25744100 MLTC METRO OMAHA PAY HOME	7.00	7	0	7	0	0	7.00	7	0	7	0	0	7.00	7	0	7	0	0	
25744200 MLTC METRO LINCOLN PAY HOME	3.00	3	0	3	0	0	3.00	3	0	3	0	0	3.00	3	0	3	0	0	
25744500 MLTC RURAL PAY HOME	7.00	7	0	7	0	0	7.00	7	0	7	0	0	7.00	7	0	7	0	0	
TOTAL	31.00	31	1	32	0	0	32.00	32	0	32	0	0	31.00	31	1	32	0	0	

*All numbers exclude frozen positions

**Filled FTE, # Filled Positions, and # Vacant Positions from monthly FTE Reports (pulled from Workday)

†Terms and Hires from monthly Terms-Hires Report (pulled from Workday)