

October 31, 2014

Patrick O'Donnell, Clerk of the Legislature
State Capitol, Room 2018
P.O. Box 94604
Lincoln, NE 68509-4604

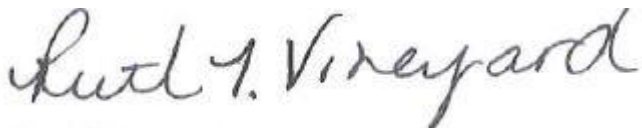
RE: ACCESSNebraska Quarterly Report

Dear Mr. O'Donnell,

In accordance with Legislative Bill 195 (2013) ACCESSNebraska Quarterly Reports, I have attached a copy of the most recent quarter from the Division of Medicaid and Long-Term Care. We are pleased to report improvement from the previous quarter.

The attached report covers the quarter from July through September 2014.

Respectfully,



Ruth Vineyard
Deputy Director
Medicaid and Long-Term Care
Department of Health and Human Services

**Department of Health and Human Services
Legislative Report
LB 195**

**ACCESSNebraska
Medicaid**

July – September 2014 Quarter

**REPORT FOR: LEGISLATURE
REPORT DATE: OCTOBER 31, 2014
LEGISLATIVE BILL: LB 195
COMMITTEE NAME: HEALTH AND HUMAN SERVICES COMMITTEE
CONTACT PERSON: RUTH VINEYARD, DEPUTY DIRECTOR
MEDICAID AND LONG-TERM CARE DIVISION**

Element Two: Number of days in increments that it takes to process applications for Medicaid and Children's Health Insurance Program, separating the data for applicants not applying on the basis of disability from applicants applying on the basis of disability, overall and broken down by county.

See attached:

- Application Processing Medicaid for Children and Families
- Application Processing Medicaid for Aged and Disabled
- Application Processing Children's Health Insurance Program

Element Three: Reasons for benefit applications processing delays (department, client or third party) for all applications that are processed beyond federal and state timeliness in Aid to Dependent Children, Supplemental Nutrition Assistance Program, Aid to Aged, Blind and Disabled, Medicaid and Children's Health Insurance Program statewide, and Child Care Subsidy program, overall and broken down by county. This shall include the number of cases for each respective reason (department, client and third party).

Data began being collected on July 14, 2014.

See attached:

- Application Processing Delays MLTC Programs

Element Four: The number of case closures in Medicaid, Children's Health Insurance Program, Aid to Dependent Children, Supplemental Nutrition Assistance Program, Aid to Aged Blind and Disabled, and Child Care subsidy program, and the reason for the closure statewide and overall and broken down by county.

See attached:

- Cases Closed by County Reason

Element Five: The number of case closures due to failure to recertify benefits, including timely provide information, failing to perform a case review or failing to appear for an appointment, overall and broken down by county.

See attached:

- Cases Closed by County Reason

Element Six: Total number of first-time applicants for benefits categorized by state and county and by month.

See attached:

- July Applications
- August Applications
- September Applications

Element Seven: The percentage of applications that are re-applications, categorized by state and county and by month.

See attached:

- July Applications
- August Applications
- September Applications

Element Eight: The percentage of individuals whose cases closed who reapply for benefits within thirty days and sixty days after case closure, categorized by state and county, and by month.

Medicaid Programs are included in this report.

See attached:

- June percentage of people who had case closed who reapplied within 30 and 60 days
- July percentage of people who had case closed who reapplied within 30 and 60 days
- August percentage of people who had case closed who reapplied within 30 and 60 days.

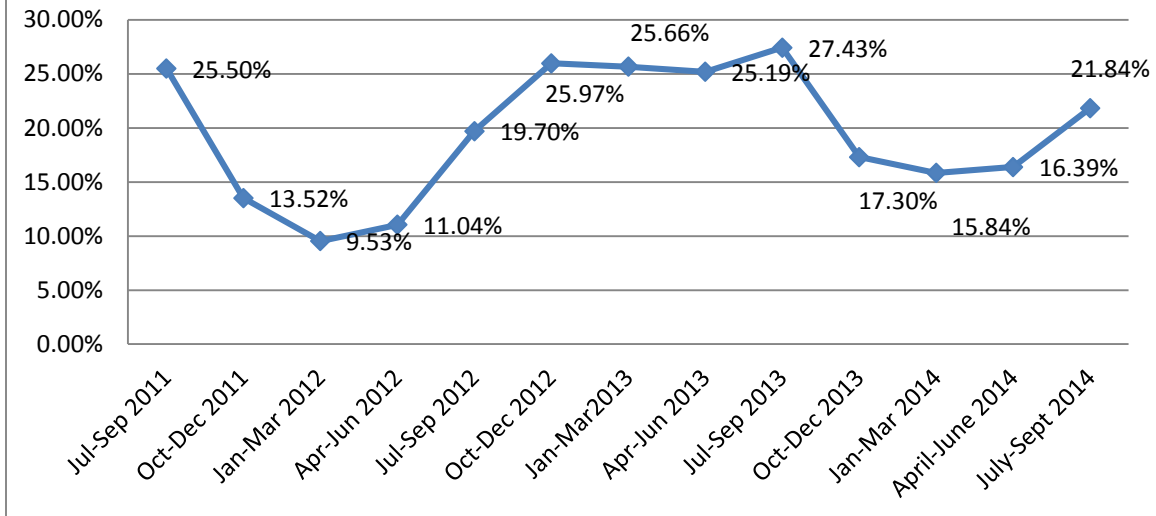
Element Nine: Average wait time for call center response. The average wait time starting from the time when the call was transferred to the customer service center to the time when the worker answered the call.

Average Call Wait				
	July	August	September	Quarter
Medicaid	4:38	5:21	5:23	5:07

Element Ten: The number of client call terminations (client hang ups) that occurred prior to speaking with a staff member and the average length of time starting from the time when the call was transferred to the customer service center to the time when the caller terminated the call.

Call Terminations				
Medicaid	July	August	September	Quarter
Abandonment Rate	12.10%	13.24%	13.62%	12.98%
Number of Abandons	4,055	4,330	4,471	12,856
Average Time to Abandon	3:57	4:09	3:58	4:01

ACCESSNebraska Call Abandonment Rate By Quarter--All Programs



Element Eleven: average number of minutes per delivery system transaction or task based on type of transaction, including but not limited to, application management (new review, renewal), Interviewing (high and low priority), application processing (processing initial, processing daily, and processing ready), and change management.

Data regarding the number of minutes per delivery to process a task is not available. A report reflecting the number of days to complete a work task is attached. This is for the Medicaid Program Work Task Queue.

See attached:

- July 2014 to September 2014 Work Task Report

Element Twelve: The number of hours and the number of days when call center responses are at a maximum and clients receive a busy signal when calling.

The Office of the Chief Information Officer (OCIO) sends busy signal reports to the Medicaid Division of DHHS. The report reflects the date, time and location when a busy signal occurred; it can be assumed if the date and time are not listed that a busy signal did not occur. Windstream submits the Lincoln local number and the Statewide toll free number report. Qwest submits the Omaha local number report. Medicaid has 46 lines available in each location.

A review of the July – September phone traffic reports indicate busy signals occurred on three days in the last quarter. Two days with busy signals occurring in both Lincoln, Omaha and on the Statewide toll free number were July 7 and August 4. The busy signals were during the 11:00 A.M. to 3:00 P.M. timeframe. The report indicates one day in the quarter when busy signals occurred on the Lincoln local number and the Statewide toll free number which was September 8 during the 2:00 PM – 3:00 PM hour.

Element Thirteen: It is the intent of the Legislature that the department submits a report to the Clerk of the Legislature that includes the following monthly information on a quarterly basis of the workers in the ACCESSNebraska call centers and in local offices. The number of social service workers, eligibility technicians and social service lead workers and the number of vacancies are in these positions at the beginning of each month; the number of these positions vacated within a month; and the number of these positions filled within a month.

See attached:

- Human Resources 3rd Quarter 2014

MEDICAID for Children and Families

	April 2014						May 2014						June 2014						July 2014	
	00-05 Days	06-30 Days	31-45 Days	46-60 Days	Over 60	Mnthly Total	00-05 Days	06-30 Days	31-45 Days	46-60 Days	Over 60	Mnthly Total	00-05 Days	06-30 Days	31-45 Days	46-60 Days	Over 60	Mnthly Total	00-05 Days	06-30 Days
Adams	6	36	6	5	5	58	4	31	8	4	1	48	12	27	7	6	3	55	7	20
Antelope	1	6	0	2	0	9	1	4	1	1	0	7	2	4	2	1	0	9	0	0
Banner	0	2	0	0	0	2	0	0	0	0	0	0	0	1	0	0	0	1	0	0
Blaine	0	1	1	1	0	3	0	0	0	0	0	0	0	1	1	0	0	2	0	1
Boone	0	6	0	0	3	9	1	4	3	0	0	8	0	2	3	1	0	6	3	3
Box Butte	1	19	4	9	2	35	3	13	3	1	1	21	4	6	0	3	1	14	11	6
Boyd	0	0	0	0	0	0	0	0	0	0	0	0	0	1	2	2	1	6	0	1
Brown	1	5	2	0	0	8	0	2	1	0	0	3	1	4	0	2	0	7	0	2
Buffalo	7	49	11	15	5	87	7	30	9	6	2	54	13	24	10	9	4	60	35	21
Burt	1	6	0	3	1	11	2	6	3	1	1	13	1	4	1	5	0	11	4	4
Butler	1	6	0	4	3	14	3	1	1	1	1	7	1	1	0	1	0	3	4	3
Cass	4	24	6	1	4	39	8	14	3	4	4	33	5	8	4	7	0	24	18	20
Cedar	1	6	1	0	2	10	0	1	1	0	1	3	1	6	0	3	0	10	1	4
Chase	0	3	0	0	0	3	1	1	0	0	0	2	0	1	0	1	0	2	2	1
Cherry	0	7	0	0	2	9	0	2	1	0	1	4	3	3	1	0	0	7	5	2
Cheyenne	3	16	2	2	0	23	4	7	1	1	1	14	2	4	4	1	1	12	6	5
Clay	1	6	2	3	1	13	1	3	1	0	0	5	0	5	2	2	1	10	5	2
Colfax	5	15	2	7	4	33	2	8	0	3	3	16	0	9	4	3	0	16	4	10
Cuming	1	5	2	0	2	10	0	4	2	3	0	9	3	6	1	1	1	12	3	5
Custer	1	9	6	1	4	21	3	4	1	2	0	10	2	5	1	2	1	11	10	4
Dakota	8	36	7	12	2	65	7	29	6	6	6	54	11	30	8	6	4	59	22	30

July 2014				August 2014						September 2014				County Total
31-45 Days	46-60 Days	Over 60	Mnthly Total	00-05 Days	06-30 Days	31-45 Days	46-60 Days	Over 60	Mnthly Total	00-05 Days	06-30 Days	31-45 Days	Mnthly Total	
3	3	3	36	8	28	4	4	0	44	10	15	0	25	266
0	0	0	0	0	6	0	0	0	6	0	5	0	5	36
0	0	0	0	0	1	0	0	0	1	0	1	0	1	5
0	0	0	1	0	0	0	0	0	0	0	0	0	0	6
0	0	0	6	0	3	0	1	0	4	1	5	0	6	39
4	2	0	23	3	12	1	0	0	16	1	13	0	14	123
1	2	0	4	0	3	0	0	0	3	0	2	0	2	15
0	0	0	2	1	4	0	0	0	5	0	1	0	1	26
4	6	2	68	4	40	3	3	0	50	7	21	1	29	348
0	1	0	9	3	8	0	1	0	12	1	1	0	2	58
0	1	0	8	0	7	0	0	0	7	0	6	0	6	45
1	5	1	45	6	15	2	2	0	25	8	9	0	17	183
0	0	0	5	0	5	0	0	0	5	0	1	0	1	34
0	2	0	5	2	1	0	0	0	3	0	0	0	0	15
2	1	0	10	0	11	0	0	0	11	0	5	0	5	46
1	2	0	14	1	11	1	0	0	13	3	4	0	7	83
1	1	0	9	2	6	0	0	0	8	0	4	0	4	49
3	2	0	19	3	9	6	3	0	21	0	3	0	3	108
2	3	2	15	0	4	0	0	0	4	1	3	0	4	54
5	1	1	21	0	16	2	0	0	18	0	4	0	4	85
4	10	3	69	6	33	13	1	0	53	2	15	0	17	317

MEDICAID for Children and Families

	April 2014						May 2014						June 2014						July 2014	
	00-05 Days	06-30 Days	31-45 Days	46-60 Days	Over 60	Mnthly Total	00-05 Days	06-30 Days	31-45 Days	46-60 Days	Over 60	Mnthly Total	00-05 Days	06-30 Days	31-45 Days	46-60 Days	Over 60	Mnthly Total	00-05 Days	06-30 Days
Hitchcock	2	4	0	0	1	7	0	2	0	0	1	3	0	1	0	1	1	3	1	1
Holt	0	11	3	5	0	19	1	7	1	4	0	13	3	2	0	2	1	8	5	6
Hooker	0	1	0	0	0	1	0	0	0	0	0	0	0	1	0	0	0	1	0	0
Howard	2	2	0	1	3	8	1	1	0	1	2	5	0	5	0	1	0	6	0	1
Jefferson	2	6	0	0	0	8	2	1	3	1	1	8	0	2	1	3	1	7	1	9
Johnson	1	2	1	0	2	6	0	1	0	0	1	2	1	3	1	3	1	9	1	2
Kearney	0	5	1	2	1	9	1	6	1	2	0	10	0	5	1	1	0	7	8	2
Keith	1	8	0	3	1	13	3	6	1	1	1	12	0	5	1	1	1	8	4	2
Keya Paha	0	1	0	0	0	1	0	0	0	0	1	1	1	0	1	0	0	2	0	1
Kimball	1	2	0	0	1	4	2	3	1	1	1	8	0	5	0	1	0	6	3	5
Knox	1	8	4	1	1	15	2	4	4	1	1	12	2	9	2	0	0	13	4	3
Lancaster	50	271	42	42	42	447	63	181	44	46	20	354	78	190	42	36	13	359	160	203
Lincoln	4	37	4	10	4	59	14	36	8	9	5	72	11	27	10	14	5	67	24	26
Logan	0	1	0	1	0	2	0	0	0	0	0	0	0	0	1	0	0	1	1	0
Loup	0	0	0	0	0	0	0	0	0	0	0	0	0	0	0	0	0	0	0	0
Madison	8	44	7	10	8	77	7	27	7	16	4	61	13	24	4	11	4	56	19	26
Merrick	1	3	1	1	1	7	0	8	1	3	0	12	4	6	2	4	0	16	2	6
Morrill	1	5	0	3	3	12	0	2	1	0	0	3	1	2	1	1	1	6	8	6
Nance	1	0	0	1	0	2	0	3	0	1	0	4	0	1	0	0	1	2	0	1
Nemaha	2	6	1	1	0	10	1	5	0	1	0	7	1	8	1	2	2	14	4	2
Nuckolls	1	3	0	1	1	6	1	5	1	2	2	11	0	4	0	2	0	6	2	1

July 2014				August 2014						September 2014				County Total
31-45 Days	46-60 Days	Over 60	Mnthly Total	00-05 Days	06-30 Days	31-45 Days	46-60 Days	Over 60	Mnthly Total	00-05 Days	06-30 Days	31-45 Days	Mnthly Total	
0	0	0	2	1	3	0	0	0	4	0	1	0	1	20
1	3	0	15	1	7	1	0	0	9	0	3	0	3	67
0	0	0	0	0	0	0	0	0	0	0	1	0	1	3
1	1	0	3	1	5	0	0	0	6	2	4	0	6	34
0	1	0	11	1	8	1	1	0	11	2	5	0	7	52
1	0	0	4	4	3	1	0	0	8	0	1	0	1	30
0	1	0	11	0	5	0	0	0	5	2	1	0	3	45
1	1	1	9	0	8	1	0	0	9	0	6	0	6	57
0	0	0	1	0	1	0	0	0	1	0	0	0	0	6
0	1	0	9	2	4	0	1	0	7	2	3	0	5	39
2	1	0	10	0	10	0	0	0	10	2	7	0	9	69
26	43	13	445	62	251	19	10	0	342	38	154	0	192	2,139
4	8	0	62	12	48	6	2	0	68	5	31	0	36	364
0	0	0	1	0	1	0	0	0	1	0	3	0	3	8
0	0	0	0	0	1	0	0	0	1	0	1	0	1	2
3	6	3	57	6	39	9	2	0	56	2	30	0	32	339
1	2	1	12	2	7	0	0	0	9	0	3	0	3	59
1	0	1	16	0	4	2	0	0	6	0	7	0	7	50
0	1	0	2	2	3	1	0	0	6	0	0	0	0	16
0	0	1	7	2	7	1	0	1	11	1	4	0	5	54
2	0	0	5	1	3	1	0	0	5	0	1	0	1	34

MEDICAID for Children and Families

	April 2014						May 2014						June 2014						July 2014	
	00-05 Days	06-30 Days	31-45 Days	46-60 Days	Over 60	Mnthly Total	00-05 Days	06-30 Days	31-45 Days	46-60 Days	Over 60	Mnthly Total	00-05 Days	06-30 Days	31-45 Days	46-60 Days	Over 60	Mnthly Total	00-05 Days	06-30 Days
Otoe	3	17	4	2	4	30	2	11	4	4	3	24	3	6	1	1	1	12	4	12
Out-of-state	1	3	0	0	0	4	0	2	0	1	0	3	5	2	0	2	0	9	5	5
Pawnee	1	1	1	0	0	3	0	1	0	0	0	1	3	0	1	0	0	4	1	2
Perkins	1	2	1	0	0	4	1	3	0	0	0	4	0	2	1	0	0	3	0	2
Phelps	2	10	2	1	2	17	1	3	0	0	1	5	2	3	1	0	0	6	2	1
Pierce	2	2	1	1	0	6	0	3	0	5	0	8	0	3	0	0	0	3	1	3
Platte	5	36	5	9	8	63	8	27	7	8	4	54	5	29	4	5	4	47	15	18
Polk	0	3	2	0	0	5	1	2	0	0	0	3	1	3	0	0	0	4	1	4
Red Willow	2	7	2	0	1	12	2	9	4	0	1	16	6	7	2	5	0	20	1	9
Richardson	0	11	1	1	0	13	2	7	2	2	1	14	3	7	0	1	0	11	3	9
Rock	0	1	1	0	0	2	0	0	0	0	0	0	1	0	0	0	0	1	0	0
Saline	3	14	0	2	5	24	3	9	2	1	2	17	5	8	1	2	2	18	5	8
Sarpy	26	122	17	30	18	213	19	87	16	35	10	167	26	95	19	21	7	168	75	69
Saunders	2	14	4	6	2	28	3	4	0	2	2	11	3	8	2	5	0	18	9	12
Scotts Bluff	5	64	13	14	6	102	9	30	10	11	1	61	8	36	11	15	5	75	38	30
Seward	0	8	1	2	1	12	4	3	0	1	0	8	2	8	0	0	0	10	4	7
Sheridan	1	6	1	1	1	10	1	3	1	0	1	6	2	6	1	1	0	10	5	2
Sherman	1	2	4	0	1	8	1	0	1	1	0	3	0	1	0	0	0	1	3	0
Sioux	0	1	0	0	0	1	0	1	0	0	0	1	0	0	0	0	0	0	0	1
Stanton	0	3	0	0	0	3	1	1	0	1	0	3	0	1	0	1	0	2	2	1
Thayer	0	3	1	0	0	4	0	5	0	1	1	7	0	8	0	0	0	8	6	1

July 2014				August 2014						September 2014				County Total
31-45 Days	46-60 Days	Over 60	Mnthly Total	00-05 Days	06-30 Days	31-45 Days	46-60 Days	Over 60	Mnthly Total	00-05 Days	06-30 Days	31-45 Days	Mnthly Total	
4	3	0	23	2	6	4	0	0	12	2	11	0	13	114
1	0	0	11	1	4	0	0	0	5	2	5	0	7	39
1	0	0	4	0	3	0	0	0	3	0	0	0	0	15
0	0	0	2	0	2	0	0	0	2	0	1	0	1	16
3	1	1	8	2	8	0	0	0	10	2	6	0	8	54
0	1	0	5	1	7	0	0	0	8	1	4	0	5	35
4	5	3	45	2	33	6	0	0	41	2	23	0	25	275
0	0	0	5	0	8	0	0	0	8	1	6	0	7	32
2	0	0	12	3	7	2	1	0	13	0	5	0	5	78
2	0	1	15	4	8	1	0	0	13	2	7	0	9	75
0	1	0	1	1	0	0	0	0	1	0	2	0	2	7
2	4	4	23	2	10	3	2	0	17	0	7	1	8	107
18	15	5	182	25	104	21	9	0	159	17	59	0	76	965
4	3	2	30	2	15	2	0	0	19	1	9	0	10	116
2	8	4	82	11	64	11	4	0	90	8	39	0	47	457
1	0	0	12	2	7	1	0	0	10	3	3	0	6	58
1	3	0	11	4	6	0	1	1	12	2	5	0	7	56
0	0	0	3	1	3	0	0	0	4	0	1	0	1	20
0	0	0	1	0	0	0	0	0	0	0	0	0	0	3
0	0	0	3	1	3	0	0	0	4	0	3	0	3	18
2	0	1	10	1	3	0	0	0	4	1	3	0	4	37

MEDICAID for Children and Families

	April 2014						May 2014						June 2014						July 2014	
	00-05 Days	06-30 Days	31-45 Days	46-60 Days	Over 60	Mnthly Total	00-05 Days	06-30 Days	31-45 Days	46-60 Days	Over 60	Mnthly Total	00-05 Days	06-30 Days	31-45 Days	46-60 Days	Over 60	Mnthly Total	00-05 Days	06-30 Days
Thurston	1	26	3	5	6	41	6	11	5	1	2	25	10	11	6	3	4	34	15	12
Valley	0	3	1	1	0	5	0	5	0	0	0	5	3	2	1	2	0	8	1	2
Washington	2	13	2	2	2	21	1	12	1	2	3	19	1	8	4	1	0	14	7	7
Wayne	1	7	4	1	1	14	0	6	1	1	1	9	2	4	2	1	1	10	3	3
Webster	0	3	0	2	0	5	3	5	0	1	0	9	2	2	1	0	0	5	0	0
Wheeler	0	0	0	0	0	0	0	1	0	0	0	1	0	0	0	0	0	0	0	0
York	2	9	2	1	1	15	3	6	1	1	0	11	1	10	0	3	0	14	11	11
Total	404	2,022	351	378	301	3,456	417	1,362	306	354	164	2,603	539	1,325	305	358	101	2,628	1,152	1,196

July 2014				August 2014						September 2014				County Total
31-45 Days	46-60 Days	Over 60	Mnthly Total	00-05 Days	06-30 Days	31-45 Days	46-60 Days	Over 60	Mnthly Total	00-05 Days	06-30 Days	31-45 Days	Mnthly Total	
4	3	1	35	5	41	4	1	0	51	5	23	0	28	214
0	0	0	3	0	4	0	0	0	4	1	3	0	4	29
2	2	0	18	5	14	1	3	0	23	0	13	0	13	108
0	1	0	7	1	9	3	0	0	13	0	2	0	2	55
1	0	0	1	0	2	1	0	0	3	2	3	0	5	28
0	0	0	0	0	3	0	0	0	3	0	0	0	0	4
2	1	1	26	2	10	2	2	0	16	2	10	0	12	94
238	284	114	2,984	411	1,854	283	108	3	2,659	264	1,168	6	1,438	15,768

MEDICAID for Aged and Disabled

	April 2014						May 2014						June 2014						July 2014	
	00-05 Days	06-30 Days	31-45 Days	46-60 Days	Over 60	Mnthly Total	00-05 Days	06-30 Days	31-45 Days	46-60 Days	Over 60	Mnthly Total	00-05 Days	06-30 Days	31-45 Days	46-60 Days	Over 60	Mnthly Total	00-05 Days	06-30 Days
Adams	0	5	0	1	3	9	4	6	2	1	1	14	3	5	1	2	7	18	1	7
Antelope	1	0	0	0	0	1	0	0	0	1	0	1	0	0	0	0	0	0	0	0
Arthur	0	0	0	0	0	0	0	0	0	1	0	1	0	0	0	0	0	0	0	0
Boone	0	3	0	0	0	3	0	0	0	0	1	1	0	1	1	0	0	2	0	0
Box Butte	1	6	1	1	0	9	2	2	0	1	1	6	2	1	0	0	0	3	0	0
Boyd	0	0	0	0	0	0	0	0	0	1	1	2	0	1	0	0	0	1	0	1
Brown	0	0	0	0	0	0	0	0	0	0	0	0	0	0	1	0	0	1	0	1
Buffalo	2	8	2	2	1	15	4	4	3	1	1	13	4	4	3	1	1	13	4	3
Burt	0	0	0	0	0	0	0	0	0	2	0	2	1	2	1	1	0	5	0	1
Butler	2	0	1	1	0	4	0	0	0	0	0	0	0	0	0	0	0	0	1	2
Cass	1	4	1	0	1	7	1	1	2	0	0	4	1	4	1	1	0	7	0	2
Cedar	0	0	1	0	0	1	1	1	1	0	0	3	0	0	1	0	0	1	0	0
Chase	0	3	0	0	0	3	0	0	0	0	0	0	0	0	0	0	0	0	0	1
Cherry	0	1	0	0	0	1	0	0	0	0	0	0	1	5	0	0	0	6	0	1
Cheyenne	0	4	3	0	0	7	1	3	0	1	1	6	0	1	0	1	0	2	1	0
Clay	0	2	0	0	0	2	1	0	0	0	1	2	1	2	0	0	0	3	1	4
Colfax	0	2	0	0	1	3	0	0	0	0	0	0	0	2	1	0	0	3	0	3
Cuming	1	2	0	0	0	3	0	6	0	0	0	6	0	2	0	0	0	2	1	0
Custer	1	1	0	0	0	2	1	1	0	1	1	4	0	0	0	0	0	0	1	1
Dakota	1	2	3	2	1	9	1	1	0	4	1	7	1	5	1	1	0	8	0	4
Dawes	1	3	0	0	0	4	1	0	0	1	0	2	0	1	1	0	0	2	0	0

July 2014				August 2014						September 2014				County Total
31-45 Days	46-60 Days	Over 60	Mnthly Total	00-05 Days	06-30 Days	31-45 Days	46-60 Days	Over 60	Mnthly Total	00-05 Days	06-30 Days	31-45 Days	Mnthly Total	
2	2	1	13	2	2	2	0	0	6	3	3	0	6	66
0	1	1	2	0	0	1	0	0	1	0	0	0	0	5
0	0	0	0	0	0	0	0	0	0	0	0	0	0	1
0	0	1	1	1	0	0	1	0	2	1	0	0	1	10
0	0	0	0	0	1	1	0	0	2	0	3	0	3	23
0	1	0	2	0	0	0	0	0	0	0	0	0	0	5
0	0	1	2	0	0	0	0	0	0	0	0	0	0	3
1	1	0	9	0	3	0	1	0	4	2	2	0	4	58
1	0	0	2	0	1	1	1	0	3	0	0	0	0	12
0	0	1	4	1	2	0	0	0	3	0	1	0	1	12
2	0	0	4	0	1	0	1	0	2	0	1	0	1	25
0	0	0	0	0	0	0	0	0	0	0	1	0	1	6
0	0	0	1	0	0	0	0	0	0	0	1	0	1	5
1	0	0	2	0	1	0	0	0	1	0	2	0	2	12
1	0	0	2	0	2	0	0	0	2	0	2	0	2	21
1	0	0	6	0	1	0	0	0	1	0	0	0	0	14
0	0	1	4	1	1	0	0	0	2	0	1	0	1	13
1	0	1	3	0	1	0	0	0	1	0	0	0	0	15
1	0	0	3	0	1	1	1	0	3	0	1	0	1	13
4	1	1	10	1	2	2	0	0	5	0	0	0	0	39
0	2	0	2	0	3	0	0	0	3	1	0	0	1	14

MEDICAID for Aged and Disabled

	April 2014						May 2014						June 2014						July 2014	
	00-05 Days	06-30 Days	31-45 Days	46-60 Days	Over 60	Mnthly Total	00-05 Days	06-30 Days	31-45 Days	46-60 Days	Over 60	Mnthly Total	00-05 Days	06-30 Days	31-45 Days	46-60 Days	Over 60	Mnthly Total	00-05 Days	06-30 Days
Dawson	1	5	3	1	3	13	0	3	1	3	0	7	0	7	0	2	0	9	1	6
Deuel	0	0	0	0	1	1	0	0	0	0	0	0	0	0	0	0	0	0	0	0
Dixon	1	2	0	0	0	3	0	1	0	0	0	1	0	1	0	0	0	1	0	1
Dodge	4	10	3	4	1	22	6	4	1	3	1	15	5	6	2	5	1	19	3	5
Douglas	42	133	33	30	30	268	64	66	23	26	23	202	46	71	16	18	13	164	34	114
Dundy	2	1	0	0	0	3	1	0	0	0	0	1	0	2	0	0	0	2	0	1
Fillmore	0	1	1	0	0	2	1	0	0	0	0	1	0	0	1	1	0	2	1	0
Franklin	0	0	0	0	0	0	0	0	0	0	0	0	0	1	0	0	0	1	1	1
Frontier	0	0	0	0	0	0	0	1	0	1	0	2	0	1	0	0	0	1	0	0
Furnas	2	0	0	1	0	3	1	0	1	0	0	2	0	0	0	0	0	0	2	1
Gage	0	0	2	0	0	2	2	4	0	3	0	9	2	5	1	2	0	10	2	6
Garden	0	1	0	0	0	1	1	0	0	0	0	1	2	0	0	0	0	2	1	0
Garfield	1	0	0	0	0	1	0	0	0	1	0	1	2	0	0	0	0	2	0	1
Gosper	1	1	0	0	0	2	0	0	0	0	0	0	3	0	0	0	0	3	0	1
Greeley	0	0	0	1	1	2	0	0	0	0	0	0	0	0	0	0	0	0	0	0
Hall	3	15	5	3	1	27	3	10	6	2	2	23	6	6	4	1	1	18	5	8
Hamilton	0	2	0	0	1	3	0	0	0	0	0	0	0	1	0	0	0	1	1	1
Harlan	0	0	1	0	0	1	0	0	0	0	0	0	1	0	0	0	0	1	0	0
Hitchcock	0	0	0	1	1	2	0	1	0	0	0	1	0	0	0	0	0	0	0	3
Holt	0	1	0	1	0	2	0	2	0	0	0	2	0	2	0	1	0	3	1	1
Hooker	0	0	0	0	0	0	0	1	0	0	0	1	1	0	0	0	0	1	0	0

MEDICAID for Aged and Disabled

	April 2014						May 2014						June 2014						July 2014	
	00-05 Days	06-30 Days	31-45 Days	46-60 Days	Over 60	Mnthly Total	00-05 Days	06-30 Days	31-45 Days	46-60 Days	Over 60	Mnthly Total	00-05 Days	06-30 Days	31-45 Days	46-60 Days	Over 60	Mnthly Total	00-05 Days	06-30 Days
Howard	0	0	0	0	1	1	1	1	0	0	0	2	0	0	0	1	0	1	0	3
Jefferson	0	0	0	0	0	0	0	1	0	0	0	1	0	1	0	3	0	4	0	4
Johnson	0	1	0	0	0	1	0	0	0	0	1	1	0	0	1	0	0	1	0	1
Kearney	0	2	0	0	0	2	0	1	0	0	0	1	1	1	0	0	0	2	1	1
Keith	0	0	0	0	0	0	3	2	0	0	0	5	2	3	0	0	0	5	1	0
Kimball	2	1	0	0	0	3	0	0	0	0	0	0	0	1	0	1	0	2	0	0
Knox	1	3	0	0	0	4	0	0	1	0	0	1	1	1	1	1	0	4	0	3
Lancaster	16	62	12	13	12	115	30	29	8	9	9	85	20	36	9	11	8	84	10	47
Lincoln	2	10	0	0	1	13	6	7	1	3	1	18	5	7	2	2	1	17	3	9
Logan	0	1	0	0	0	1	0	0	0	0	0	0	0	0	0	0	0	0	0	0
Madison	1	5	1	5	2	14	3	10	0	2	0	15	3	4	2	2	3	14	2	8
McPherson	0	0	0	0	0	0	0	0	0	0	1	1	0	0	0	0	0	0	0	0
Merrick	0	2	0	0	0	2	1	2	1	0	0	4	1	1	0	0	1	3	0	0
Morrill	0	3	0	1	1	5	2	2	0	0	0	4	0	0	0	0	0	0	0	1
Nance	0	1	1	0	2	4	0	0	1	0	0	1	0	1	0	0	0	1	0	0
Nemaha	1	1	0	0	0	2	1	2	1	0	0	4	0	2	0	0	1	3	0	4
Nuckolls	0	3	0	0	0	3	0	0	0	0	0	0	0	0	0	0	1	1	0	1
Otoe	3	5	1	1	0	10	1	1	3	1	0	6	1	0	0	2	0	3	1	4
Out-of-state	1	2	0	0	0	3	1	1	0	0	0	2	2	0	1	1	0	4	1	1
Pawnee	0	3	0	0	0	3	0	0	0	0	0	0	0	0	0	0	0	0	0	0
Perkins	0	2	0	0	0	2	1	0	0	0	0	1	0	1	0	0	0	1	0	2

MEDICAID for Aged and Disabled

	April 2014						May 2014						June 2014						July 2014	
	00-05 Days	06-30 Days	31-45 Days	46-60 Days	Over 60	Mnthly Total	00-05 Days	06-30 Days	31-45 Days	46-60 Days	Over 60	Mnthly Total	00-05 Days	06-30 Days	31-45 Days	46-60 Days	Over 60	Mnthly Total	00-05 Days	06-30 Days
Phelps	1	1	1	0	0	3	1	1	0	1	0	3	0	0	1	0	0	1	0	3
Pierce	0	0	0	0	0	0	0	2	0	0	0	2	0	0	0	0	0	0	0	1
Platte	0	2	4	3	1	10	2	2	1	1	0	6	3	1	0	1	0	5	1	3
Polk	0	0	1	0	0	1	0	1	0	0	0	1	0	0	0	0	0	0	0	0
Red Willow	1	6	1	1	0	9	0	1	0	0	0	1	4	3	0	1	0	8	1	0
Richardson	0	2	1	0	1	4	1	1	3	0	0	5	0	1	1	2	0	4	2	3
Rock	0	0	0	0	0	0	0	1	0	0	0	1	1	0	0	0	0	1	0	0
Saline	1	2	0	1	0	4	1	1	0	0	0	2	1	3	0	2	0	6	0	2
Sarpy	5	15	4	6	5	35	10	9	5	6	3	33	8	10	3	1	3	25	7	18
Saunders	1	0	0	3	3	7	1	1	1	0	1	4	2	1	1	0	0	4	2	1
Scotts Bluff	3	12	1	6	0	22	7	14	2	1	2	26	4	8	2	4	2	20	1	6
Seward	0	2	1	0	1	4	0	4	0	0	0	4	1	0	0	0	0	1	0	0
Sheridan	0	2	1	0	0	3	0	0	0	0	0	0	0	0	0	0	0	0	0	1
Sherman	0	1	0	0	0	1	1	0	0	0	0	1	0	0	0	0	0	0	0	0
Stanton	0	2	0	0	0	2	0	0	1	0	0	1	0	1	0	1	0	2	0	0
Thayer	1	4	1	0	0	6	0	2	0	0	0	2	1	1	0	0	0	2	0	1
Thomas	0	0	0	0	0	0	0	0	0	1	0	1	0	0	0	0	0	0	0	0
Thurston	1	3	0	2	1	7	3	0	1	0	2	6	3	0	0	1	1	5	1	1
Valley	1	0	0	0	1	2	0	0	0	0	0	0	0	1	1	0	1	3	0	1
Washington	2	2	0	0	0	4	3	2	0	0	1	6	0	1	1	0	0	2	0	4
Wayne	0	0	1	0	0	1	0	2	1	0	0	3	0	0	0	0	1	1	0	1

July 2014				August 2014						September 2014				County Total
31-45 Days	46-60 Days	Over 60	Mnthly Total	00-05 Days	06-30 Days	31-45 Days	46-60 Days	Over 60	Mnthly Total	00-05 Days	06-30 Days	31-45 Days	Mnthly Total	
0	0	0	3	2	2	1	0	0	5	1	2	0	3	18
1	0	0	2	0	0	0	0	0	0	0	1	0	1	5
1	1	0	6	2	0	2	0	0	4	0	0	0	0	31
1	0	1	2	0	1	0	0	0	1	1	0	0	1	6
2	0	0	3	0	4	0	1	0	5	1	0	0	1	27
0	0	0	5	0	1	0	0	0	1	0	0	0	0	19
0	1	0	1	0	1	0	0	0	1	0	1	0	1	5
1	1	1	5	1	2	0	0	0	3	0	1	0	1	21
1	1	2	29	1	14	3	1	0	19	2	12	0	14	155
0	0	0	3	2	5	0	0	0	7	0	3	0	3	28
0	1	1	9	3	10	1	0	0	14	1	4	0	5	96
0	1	0	1	1	0	2	0	0	3	0	0	0	0	13
1	0	0	2	0	2	0	0	0	2	1	0	0	1	8
0	1	0	1	0	2	0	0	0	2	0	0	0	0	5
0	0	0	0	0	0	0	0	0	0	0	0	0	0	5
2	0	0	3	2	0	0	1	0	3	0	0	0	0	16
0	0	0	0	0	0	0	0	0	0	0	0	0	0	1
0	0	0	2	0	3	1	0	0	4	0	1	0	1	25
0	0	0	1	0	3	0	0	0	3	0	0	0	0	9
0	0	0	4	1	3	0	0	0	4	0	0	0	0	20
0	1	0	2	0	0	0	0	0	0	0	1	0	1	8

	April 2014						May 2014						June 2014						July 2014	
	00-05 Days	06-30 Days	31-45 Days	46-60 Days	Over 60	Mnthly Total	00-05 Days	06-30 Days	31-45 Days	46-60 Days	Over 60	Mnthly Total	00-05 Days	06-30 Days	31-45 Days	46-60 Days	Over 60	Mnthly Total	00-05 Days	06-30 Days
Webster	0	4	0	0	0	4	0	1	0	0	1	2	0	1	0	0	0	1	0	0
York	0	4	0	0	0	4	1	2	0	1	0	4	0	1	1	0	0	2	0	1
Total	112	389	92	91	78	762	177	224	71	80	57	609	146	231	63	74	46	560	96	317

July 2014				August 2014						September 2014				County Total
31-45 Days	46-60 Days	Over 60	Mnthly Total	00-05 Days	06-30 Days	31-45 Days	46-60 Days	Over 60	Mnthly Total	00-05 Days	06-30 Days	31-45 Days	Mnthly Total	
0	0	0	0	0	2	0	0	0	2	0	1	0	1	10
0	0	0	1	1	3	0	1	0	5	0	2	0	2	18
90	54	32	589	58	291	69	20	1	439	59	159	2	220	3,179

Children's Health Insurance Program

	April 2014						May 2014						June 2014						July 2014	
	00-05 Days	06-30 Days	31-45 Days	46-60 Days	Over 60	Mnthly Total	00-05 Days	06-30 Days	31-45 Days	46-60 Days	Over 60	Mnthly Total	00-05 Days	06-30 Days	31-45 Days	46-60 Days	Over 60	Mnthly Total	00-05 Days	06-30 Days
Adams	0	2	1	2	0	5	0	5	0	2	0	7	1	8	0	0	0	9	2	6
Antelope	0	2	0	0	0	2	0	0	0	0	0	0	0	0	2	0	0	2	0	0
Boone	0	0	0	0	0	0	0	0	0	0	0	0	0	0	0	0	0	0	3	0
Box Butte	0	4	1	1	0	6	1	3	0	1	1	6	0	2	1	2	0	5	2	2
Boyd	0	0	0	0	0	0	0	0	0	0	0	0	0	0	0	0	0	0	0	1
Brown	0	2	0	0	0	2	0	0	0	0	0	0	0	0	1	0	0	1	0	1
Buffalo	1	4	1	0	1	7	2	2	8	0	1	13	4	4	3	2	0	13	4	4
Burt	1	1	0	1	0	3	0	1	0	0	0	1	0	2	0	1	0	3	1	0
Butler	0	1	0	1	1	3	1	0	0	0	0	1	0	0	0	0	0	0	0	1
Cass	1	2	2	2	1	8	1	3	1	0	0	5	1	1	1	0	0	3	2	6
Cedar	0	2	0	0	0	2	0	0	0	0	0	0	0	1	0	0	0	1	0	0
Chase	0	1	0	0	0	1	0	1	0	0	0	1	0	0	0	0	0	0	0	0
Cherry	0	0	2	0	1	3	0	0	0	1	0	1	1	1	0	0	0	2	0	1
Cheyenne	0	1	0	0	0	1	0	0	1	0	0	1	0	1	0	0	0	1	2	0
Clay	2	0	0	2	0	4	0	1	0	0	1	2	1	1	0	0	1	3	0	0
Colfax	0	3	0	0	1	4	1	0	0	0	0	1	0	4	0	0	0	4	3	2
Cuming	0	3	0	0	0	3	0	1	1	1	0	3	0	0	0	0	0	0	2	2
Custer	0	0	2	0	0	2	0	1	0	0	0	1	0	1	0	0	1	2	1	1
Dakota	0	8	2	0	3	13	0	6	0	1	1	8	4	3	0	1	0	8	1	9
Dawes	0	2	0	0	0	2	1	0	0	2	0	3	0	0	0	0	0	0	0	0
Dawson	0	7	2	1	0	10	1	7	1	1	0	10	4	6	1	3	0	14	2	5

July 2014				August 2014						September 2014				County Total
31-45 Days	46-60 Days	Over 60	Mnthly Total	00-05 Days	06-30 Days	31-45 Days	46-60 Days	Over 60	Mnthly Total	00-05 Days	06-30 Days	31-45 Days	Mnthly Total	
3	1	1	13	0	5	1	0	0	6	0	6	0	6	46
0	0	0	0	0	0	0	0	0	0	0	0	0	0	4
0	1	0	4	0	0	0	0	0	0	0	0	0	0	4
0	0	0	4	0	3	0	0	0	3	0	1	0	1	25
0	1	0	2	0	2	0	0	0	2	0	1	0	1	5
0	0	0	1	0	1	0	0	0	1	0	1	0	1	6
0	0	1	9	2	3	1	0	0	6	2	4	0	6	54
0	0	0	1	0	1	0	0	0	1	0	0	0	0	9
0	1	0	2	1	2	1	0	0	4	0	2	0	2	12
0	1	0	9	3	1	0	1	0	5	0	2	0	2	32
0	0	0	0	0	0	0	0	0	0	0	0	0	0	3
0	0	0	0	0	0	1	0	0	1	0	0	0	0	3
0	1	0	2	0	2	0	0	0	2	0	2	0	2	12
0	0	0	2	0	0	0	0	0	0	0	1	0	1	6
0	0	0	0	0	2	0	0	0	2	0	0	0	0	11
0	0	0	5	2	6	1	1	0	10	2	3	0	5	29
1	0	1	6	1	2	0	0	0	3	0	1	0	1	16
1	0	0	3	0	6	1	0	0	7	0	2	0	2	17
0	1	0	11	2	5	2	0	0	9	1	3	0	4	53
0	1	0	1	0	1	0	0	0	1	0	1	0	1	8
1	1	0	9	2	5	0	4	0	11	0	6	0	6	60

Children's Health Insurance Program

	April 2014						May 2014						June 2014						July 2014	
	00-05 Days	06-30 Days	31-45 Days	46-60 Days	Over 60	Mnthly Total	00-05 Days	06-30 Days	31-45 Days	46-60 Days	Over 60	Mnthly Total	00-05 Days	06-30 Days	31-45 Days	46-60 Days	Over 60	Mnthly Total	00-05 Days	06-30 Days
Deuel	0	0	0	0	0	0	0	1	0	0	0	1	0	0	1	0	0	1	0	0
Dixon	0	1	0	0	0	1	0	3	0	0	0	3	0	0	0	0	0	0	2	0
Dodge	2	20	2	0	0	24	1	6	4	2	1	14	2	5	3	0	0	10	3	6
Douglas	33	133	28	24	12	230	21	67	16	17	8	129	26	62	22	22	3	135	69	50
Dundy	0	1	0	0	0	1	0	0	0	0	0	0	0	0	0	0	0	0	0	0
Fillmore	0	1	0	0	0	1	0	0	0	0	1	1	0	0	0	0	0	0	0	0
Franklin	0	0	1	0	0	1	0	0	0	0	0	0	0	0	0	0	0	0	0	1
Frontier	0	1	0	0	0	1	0	0	0	0	0	0	0	0	0	0	0	0	1	0
Furnas	0	2	0	1	1	4	0	0	0	0	0	0	0	1	0	0	0	1	0	0
Gage	1	4	0	0	2	7	1	2	1	0	0	4	0	3	2	0	0	5	3	3
Garfield	0	0	0	0	0	0	0	0	0	0	0	0	0	0	0	0	0	0	0	0
Gosper	1	1	0	0	1	3	1	1	0	0	0	2	1	0	0	0	0	1	1	0
Greeley	0	0	0	0	0	0	0	1	0	0	0	1	0	0	0	0	0	0	0	0
Hall	4	13	3	3	4	27	4	10	6	5	1	26	7	11	4	3	0	25	10	4
Hamilton	0	1	0	0	0	1	0	1	0	0	0	1	0	0	1	1	0	2	1	2
Harlan	0	0	0	0	0	0	0	1	0	0	0	1	0	0	0	0	0	0	0	0
Hitchcock	0	0	0	0	0	0	0	0	0	0	0	0	0	0	1	0	0	1	0	0
Holt	1	1	1	2	0	5	0	0	0	1	0	1	0	0	0	0	0	0	0	2
Hooker	0	1	0	0	0	1	0	0	0	0	0	0	0	1	0	0	0	1	0	0
Howard	1	0	0	0	0	1	0	2	0	0	0	2	0	0	1	1	0	2	0	2
Jefferson	0	0	0	0	0	0	0	0	0	0	0	0	0	0	0	1	0	1	0	2

July 2014				August 2014						September 2014				County Total
31-45 Days	46-60 Days	Over 60	Mnthly Total	00-05 Days	06-30 Days	31-45 Days	46-60 Days	Over 60	Mnthly Total	00-05 Days	06-30 Days	31-45 Days	Mnthly Total	
0	0	0	0	0	0	0	0	0	0	0	0	0	0	2
0	0	0	2	1	1	1	0	0	3	0	0	0	0	9
2	0	0	11	2	3	1	0	0	6	3	7	0	10	75
17	23	3	162	36	92	24	8	1	161	26	67	4	97	914
0	0	0	0	0	1	0	0	0	1	0	0	0	0	2
0	0	0	0	0	0	0	0	0	0	0	0	0	0	2
0	0	0	1	0	0	0	0	0	0	0	0	0	0	2
0	0	0	1	0	1	0	0	0	1	0	0	0	0	3
0	0	0	0	0	0	0	0	0	0	0	1	0	1	6
0	2	0	8	0	6	1	0	0	7	0	4	0	4	35
0	0	0	0	0	1	0	0	0	1	0	0	0	0	1
0	0	0	1	0	0	0	0	0	0	0	0	0	0	7
0	0	0	0	0	1	0	0	0	1	0	0	0	0	2
2	1	2	19	6	14	5	2	0	27	1	12	0	13	137
0	0	0	3	0	1	0	1	0	2	0	2	0	2	11
0	0	0	0	1	1	0	0	0	2	1	1	0	2	5
0	0	0	0	0	0	0	0	0	0	0	0	0	0	1
1	1	0	4	0	3	0	0	0	3	0	2	0	2	15
0	0	0	0	0	0	0	0	0	0	0	0	0	0	2
0	0	0	2	0	0	0	0	0	0	1	2	0	3	10
1	0	0	3	0	2	1	0	0	3	0	1	0	1	8

Children's Health Insurance Program

	April 2014						May 2014						June 2014						July 2014	
	00-05 Days	06-30 Days	31-45 Days	46-60 Days	Over 60	Mnthly Total	00-05 Days	06-30 Days	31-45 Days	46-60 Days	Over 60	Mnthly Total	00-05 Days	06-30 Days	31-45 Days	46-60 Days	Over 60	Mnthly Total	00-05 Days	06-30 Days
Johnson	0	2	0	0	0	2	0	0	0	0	0	0	1	1	0	0	0	2	0	0
Kearney	0	2	0	0	0	2	1	2	0	0	0	3	0	1	0	0	0	1	0	0
Keith	0	1	0	1	0	2	0	0	0	2	0	2	0	2	0	0	0	2	1	1
Keya Paha	0	0	0	1	0	1	0	0	0	0	0	0	1	0	0	0	0	1	0	0
Kimball	0	0	0	0	0	0	0	2	0	1	1	4	0	0	0	0	0	0	0	0
Knox	0	0	0	0	0	0	1	0	0	0	0	1	0	1	0	0	0	1	0	2
Lancaster	17	43	9	11	8	88	8	30	5	10	2	55	9	29	3	11	2	54	16	31
Lincoln	0	11	1	0	2	14	3	2	0	0	0	5	0	3	1	2	0	6	5	6
Logan	0	0	0	0	0	0	0	0	0	0	0	0	0	0	0	0	0	0	0	0
Loup	0	0	0	1	0	1	0	0	0	0	0	0	0	0	0	0	0	0	0	0
Madison	2	8	1	2	3	16	0	2	0	3	1	6	0	5	1	0	0	6	3	2
Merrick	0	0	0	0	1	1	0	1	0	0	0	1	0	2	0	1	0	3	1	0
Morrill	0	2	1	0	0	3	0	0	1	0	1	2	1	0	0	0	0	1	0	1
Nance	1	0	0	0	0	1	1	1	0	0	0	2	0	1	0	0	0	1	0	0
Nemaha	0	3	0	0	0	3	0	0	0	1	0	1	0	0	0	0	0	0	0	0
Nuckolls	0	1	0	1	1	3	0	0	0	0	0	0	0	1	0	0	0	1	0	0
Otoe	1	2	0	1	1	5	1	1	0	0	0	2	0	3	0	0	0	3	2	1
Out-of-state	0	0	0	0	0	0	0	0	0	0	0	0	0	0	0	0	0	0	0	1
Pawnee	0	1	0	0	0	1	0	2	0	0	0	2	0	0	0	0	0	0	0	0
Perkins	0	0	0	1	0	1	0	0	0	0	0	0	0	0	0	0	0	0	0	0
Phelps	0	1	0	0	1	2	0	2	1	0	0	3	1	0	0	0	0	1	1	0

July 2014				August 2014						September 2014				County Total
31-45 Days	46-60 Days	Over 60	Mnthly Total	00-05 Days	06-30 Days	31-45 Days	46-60 Days	Over 60	Mnthly Total	00-05 Days	06-30 Days	31-45 Days	Mnthly Total	
0	0	0	0	0	1	2	0	0	3	1	0	0	1	8
0	0	0	0	0	1	0	0	0	1	0	1	0	1	8
0	0	0	2	0	0	1	1	0	2	0	2	0	2	12
0	0	0	0	0	0	0	0	0	0	0	1	0	1	3
0	0	0	0	0	0	0	0	0	0	0	0	0	0	4
0	0	0	2	0	4	0	0	0	4	0	1	0	1	9
4	4	0	55	7	39	6	1	0	53	2	24	1	27	332
1	3	0	15	2	6	0	0	0	8	0	5	0	5	53
0	0	0	0	0	1	0	0	0	1	0	0	0	0	1
0	0	0	0	0	0	0	0	0	0	0	0	0	0	1
0	3	0	8	1	4	1	0	0	6	1	7	0	8	50
1	1	0	3	0	2	0	0	0	2	0	1	0	1	11
0	0	0	1	0	2	0	0	0	2	0	2	0	2	11
0	0	0	0	0	0	0	0	0	0	0	0	0	0	4
0	0	0	0	0	0	0	0	0	0	0	2	0	2	6
2	0	0	2	1	0	1	0	0	2	0	0	0	0	8
0	1	0	4	0	6	0	1	0	7	0	3	0	3	24
0	0	0	1	0	1	0	0	0	1	0	1	0	1	3
0	0	0	0	0	1	0	0	0	1	0	0	0	0	4
0	0	0	0	0	2	0	0	0	2	0	0	0	0	3
1	0	0	2	0	0	0	0	0	0	1	0	0	1	9

Children's Health Insurance Program

	April 2014						May 2014						June 2014						July 2014	
	00-05 Days	06-30 Days	31-45 Days	46-60 Days	Over 60	Mnthly Total	00-05 Days	06-30 Days	31-45 Days	46-60 Days	Over 60	Mnthly Total	00-05 Days	06-30 Days	31-45 Days	46-60 Days	Over 60	Mnthly Total	00-05 Days	06-30 Days
Pierce	0	0	0	1	0	1	0	2	0	2	0	4	0	1	0	0	0	1	0	2
Platte	4	10	2	2	1	19	1	3	0	3	0	7	4	4	1	2	1	12	4	1
Polk	0	0	0	0	0	0	0	0	0	1	0	1	0	0	0	0	0	0	0	2
Red Willow	0	2	0	0	1	3	1	0	0	1	1	3	1	0	0	2	0	3	1	0
Richardson	0	2	0	0	0	2	0	1	0	0	0	1	1	0	0	0	0	1	0	1
Saline	0	1	0	3	2	6	0	1	1	0	1	3	3	2	0	1	0	6	4	3
Sarpy	9	33	5	9	7	63	2	11	5	5	1	24	7	9	4	3	0	23	15	19
Saunders	0	1	1	1	0	3	0	0	0	1	0	1	0	2	1	1	0	4	2	1
Scotts Bluff	0	10	2	4	3	19	1	9	3	1	0	14	0	3	4	2	1	10	7	7
Seward	0	3	0	0	0	3	1	1	0	0	0	2	1	0	0	0	0	1	1	1
Sheridan	1	1	0	0	0	2	0	0	0	0	0	0	0	0	0	0	0	0	0	0
Sherman	0	0	1	0	0	1	0	0	0	0	0	0	0	0	0	0	0	0	0	1
Stanton	0	0	0	0	0	0	0	0	0	0	0	0	1	0	0	0	0	1	1	0
Thayer	0	0	0	0	0	0	1	0	0	0	1	2	0	1	0	0	0	1	0	0
Thurston	1	5	2	0	1	9	0	2	0	1	1	4	1	3	1	0	0	5	0	0
Valley	0	4	3	0	1	8	0	0	0	0	0	0	0	2	0	0	0	2	0	1
Washington	0	4	1	0	1	6	0	3	0	1	0	4	0	1	0	0	0	1	1	1
Wayne	0	0	0	1	0	1	0	1	0	0	0	1	0	0	0	0	0	0	1	0
Webster	0	1	0	0	0	1	0	1	0	0	0	1	0	0	0	0	0	0	0	0
Wheeler	0	0	0	0	0	0	0	1	0	0	0	1	0	0	0	0	0	0	0	0
York	1	3	1	0	1	6	0	0	1	0	0	1	2	1	0	0	0	3	4	1

July 2014				August 2014						September 2014				County Total
31-45 Days	46-60 Days	Over 60	Mnthly Total	00-05 Days	06-30 Days	31-45 Days	46-60 Days	Over 60	Mnthly Total	00-05 Days	06-30 Days	31-45 Days	Mnthly Total	
0	1	0	3	0	1	0	0	0	1	0	0	0	0	10
2	0	0	7	0	10	2	2	0	14	0	1	0	1	60
0	1	0	3	0	1	0	0	0	1	0	0	0	0	5
0	0	0	1	1	2	1	0	0	4	0	0	0	0	14
0	0	0	1	0	1	0	0	0	1	0	0	0	0	6
1	1	0	9	1	5	1	1	0	8	1	0	0	1	33
5	4	3	46	8	26	7	2	0	43	2	11	0	13	212
2	0	0	5	1	2	1	0	0	4	0	1	0	1	18
1	0	1	16	3	4	3	1	0	11	1	3	0	4	74
0	0	0	2	1	0	0	0	0	1	0	2	0	2	11
0	0	0	0	1	1	0	0	0	2	0	2	0	2	6
0	0	0	1	0	1	0	0	0	1	0	0	0	0	3
0	0	0	1	0	0	0	0	0	0	0	0	0	0	2
0	0	0	0	0	0	0	0	0	0	1	0	0	1	4
1	0	0	1	1	7	0	0	0	8	3	4	0	7	34
0	0	0	1	0	2	0	0	0	2	0	0	0	0	13
1	0	0	3	1	0	0	0	0	1	0	2	0	2	17
0	1	0	2	2	0	0	0	0	2	0	0	0	0	6
0	0	0	0	0	0	0	0	0	0	0	1	0	1	3
0	0	0	0	0	0	0	0	0	0	0	1	0	1	2
1	1	0	7	1	2	1	0	0	4	2	3	0	5	26

Application Processing Times for LB 374 Reporting
Children's Health Insurance Program

	April 2014						May 2014						June 2014						July 2014	
	00-05 Days	06-30 Days	31-45 Days	46-60 Days	Over 60	Mnthly Total	00-05 Days	06-30 Days	31-45 Days	46-60 Days	Over 60	Mnthly Total	00-05 Days	06-30 Days	31-45 Days	46-60 Days	Over 60	Mnthly Total	00-05 Days	06-30 Days
Total	85	382	78	80	63	688	58	207	56	67	25	413	86	196	60	62	9	413	185	199

July 2014				August 2014						September 2014				County Total
31-45 Days	46-60 Days	Over 60	Mnthly Total	00-05 Days	06-30 Days	31-45 Days	46-60 Days	Over 60	Mnthly Total	00-05 Days	06-30 Days	31-45 Days	Mnthly Total	
52	57	12	505	91	309	68	26	1	495	52	216	5	273	2,787

599 CHIP

Total Approvals	243
Timely Approval	226
Untimely Approval	17
Agency Delay	14
Client Delay	3
Total Denials	20
Timely Denial	16
Untimely Denial	4
Client Delay	4

MEDICAID

Total Approvals	11,176
Timely Approval	10,537
Untimely Approval	639
Agency Delay	268
Client Delay	356
Third Party Delay	15
Total Denials	8,220
Timely Denial	6,720
Untimely Denial	1,500
Agency Delay	353
Client Delay	1,091
Third Party Delay	56

<u>County</u>	<u>Program</u>	<u>Month</u>	<u>Status Reason</u>	<u># of Program Cases</u>
Adams	CHIP	July	Eligibility Period Ended	1
Adams	CHIP	September	Eligibility Period Ended	2
Adams	Medicaid for Aged and Disabled	July	Case Review Not Completed	1
Adams	Medicaid for Aged and Disabled	July	Closed Retro MED	1
Adams	Medicaid for Aged and Disabled	July	Death of Participant	5
Adams	Medicaid for Aged and Disabled	July	Eligibility Requirements Not Met	1
Adams	Medicaid for Aged and Disabled	July	Failed to Provide Information	1
Adams	Medicaid for Aged and Disabled	July	In Another Case	1
Adams	Medicaid for Aged and Disabled	July	No Eligible Participants	1
Adams	Medicaid for Aged and Disabled	July	Unable to Locate or Moved	3
Adams	Medicaid for Aged and Disabled	August	Case Review Not Completed	3
Adams	Medicaid for Aged and Disabled	August	Closed Retro MED	3
Adams	Medicaid for Aged and Disabled	August	Death of Participant	7
Adams	Medicaid for Aged and Disabled	August	In Another Case	1
Adams	Medicaid for Aged and Disabled	August	No Eligible Participants	1
Adams	Medicaid for Aged and Disabled	September	Case Review Not Completed	1
Adams	Medicaid for Aged and Disabled	September	Closed Retro MED	1
Adams	Medicaid for Aged and Disabled	September	Death of Participant	5
Adams	Medicaid for Aged and Disabled	September	Failed to Provide Information	3
Antelope	CHIP	August	Eligibility Period Ended	1
Antelope	CHIP	September	Eligibility Period Ended	1
Antelope	Medicaid for Aged and Disabled	July	Case Review Not Completed	2
Antelope	Medicaid for Aged and Disabled	July	Death of Participant	1
Antelope	Medicaid for Aged and Disabled	July	Failed to Provide Information	1
Antelope	Medicaid for Aged and Disabled	August	Failed Living Arrangement	1
Antelope	Medicaid for Aged and Disabled	September	Death of Participant	2
Banner	Medicaid for Aged and Disabled	September	Case Review Not Completed	1
Boone	Medicaid for Aged and Disabled	August	Client Request	1
Boone	Medicaid for Aged and Disabled	August	Closed Retro MED	1
Boone	Medicaid for Aged and Disabled	August	No Eligible Participants	2
Boone	Medicaid for Aged and Disabled	September	Client Request	1
Boone	Medicaid for Aged and Disabled	September	Death of Participant	3
Boone	Medicaid for Aged and Disabled	September	No Eligible Participants	1
Boone	Medicaid for Aged and Disabled	September	Unable to Locate or Moved	1
Box Butte	CHIP	September	Eligibility Period Ended	1
Box Butte	Medicaid -Children and Families	July	In Another Case	1
Box Butte	Medicaid for Aged and Disabled	July	Case Review Not Completed	2
Box Butte	Medicaid for Aged and Disabled	July	Death of Participant	3
Box Butte	Medicaid for Aged and Disabled	July	Failed to Provide Information	2
Box Butte	Medicaid for Aged and Disabled	July	Not Disabled Or Blind	1
Box Butte	Medicaid for Aged and Disabled	August	Client Request	1
Box Butte	Medicaid for Aged and Disabled	August	Closed Retro MED	2
Box Butte	Medicaid for Aged and Disabled	August	Failed to Provide Information	1
Box Butte	Medicaid for Aged and Disabled	August	No Eligible Participants	1
Box Butte	Medicaid for Aged and Disabled	August	Unable to Locate or Moved	1
Box Butte	Medicaid for Aged and Disabled	September	Death of Participant	2
Box Butte	Medicaid for Aged and Disabled	September	No Eligible Participants	1
Boyd	Medicaid for Aged and Disabled	July	Death of Participant	2
Boyd	Medicaid for Aged and Disabled	July	Eligibility Requirements Not Met	1
Boyd	Medicaid for Aged and Disabled	July	No Eligible Participants	1
Boyd	Medicaid for Aged and Disabled	August	Death of Participant	1
Boyd	Medicaid for Aged and Disabled	August	No Eligible Participants	1
Boyd	Medicaid for Aged and Disabled	September	Death of Participant	1
Boyd	Medicaid for Aged and Disabled	September	Failed to Provide Information	2
Brown	Medicaid for Aged and Disabled	July	Case Review Not Completed	1
Brown	Medicaid for Aged and Disabled	July	Other	2
Brown	Medicaid for Aged and Disabled	August	Death of Participant	1
Brown	Medicaid for Aged and Disabled	September	Case Review Not Completed	1

Brown	Medicaid for Aged and Disabled	September	Death of Participant	1
Brown	Medicaid for Aged and Disabled	September	In Another Case	1
Buffalo	CHIP	July	Eligibility Period Ended	5
Buffalo	CHIP	August	Eligibility Period Ended	3
Buffalo	Medicaid for Aged and Disabled	July	Case Review Not Completed	1
Buffalo	Medicaid for Aged and Disabled	July	Death of Participant	11
Buffalo	Medicaid for Aged and Disabled	July	Eligibility Requirements Not Met	1
Buffalo	Medicaid for Aged and Disabled	July	Failed Parental Deprivation	1
Buffalo	Medicaid for Aged and Disabled	July	Failed to Provide Information	2
Buffalo	Medicaid for Aged and Disabled	July	In Another Case	1
Buffalo	Medicaid for Aged and Disabled	July	No Eligible Participants	1
Buffalo	Medicaid for Aged and Disabled	July	Not Disabled Or Blind	1
Buffalo	Medicaid for Aged and Disabled	August	Case Review Not Completed	3
Buffalo	Medicaid for Aged and Disabled	August	Closed Retro MED	1
Buffalo	Medicaid for Aged and Disabled	August	Death of Participant	12
Buffalo	Medicaid for Aged and Disabled	August	Failed to Provide Information	3
Buffalo	Medicaid for Aged and Disabled	August	In Another Case	1
Buffalo	Medicaid for Aged and Disabled	August	No Eligible Participants	1
Buffalo	Medicaid for Aged and Disabled	August	Not Considered a Resident of NE	1
Buffalo	Medicaid for Aged and Disabled	August	Other	2
Buffalo	Medicaid for Aged and Disabled	September	Client Request	1
Buffalo	Medicaid for Aged and Disabled	September	Death of Participant	5
Buffalo	Medicaid for Aged and Disabled	September	Failed Living Arrangement	1
Buffalo	Medicaid for Aged and Disabled	September	Failed to Provide Information	2
Buffalo	Medicaid for Aged and Disabled	September	In Another Case	1
Burt	Medicaid for Aged and Disabled	July	Closed Retro MED	2
Burt	Medicaid for Aged and Disabled	July	Death of Participant	3
Burt	Medicaid for Aged and Disabled	July	Failed to Provide Information	1
Burt	Medicaid for Aged and Disabled	August	Closed Retro MED	1
Burt	Medicaid for Aged and Disabled	August	Failed to Provide Information	1
Burt	Medicaid for Aged and Disabled	August	No Eligible Participants	1
Burt	Medicaid for Aged and Disabled	August	Unable to Locate or Moved	1
Burt	Medicaid for Aged and Disabled	September	Case Review Not Completed	1
Burt	Medicaid for Aged and Disabled	September	Client Request	1
Burt	Medicaid for Aged and Disabled	September	Death of Participant	1
Burt	Medicaid for Aged and Disabled	September	In Another Case	1
Butler	CHIP	August	Eligibility Period Ended	1
Butler	Medicaid for Aged and Disabled	July	Case Review Not Completed	2
Butler	Medicaid for Aged and Disabled	July	In Another Case	1
Butler	Medicaid for Aged and Disabled	July	No Eligible Participants	1
Butler	Medicaid for Aged and Disabled	August	Closed Retro MED	2
Butler	Medicaid for Aged and Disabled	August	Death of Participant	2
Butler	Medicaid for Aged and Disabled	August	In Another Case	1
Butler	Medicaid for Aged and Disabled	August	No Eligible Participants	1
Butler	Medicaid for Aged and Disabled	September	Case Review Not Completed	2
Butler	Medicaid for Aged and Disabled	September	Death of Participant	3
Butler	Medicaid for Aged and Disabled	September	In Another Case	1
Cass	CHIP	September	Creditable Coverage	1
Cass	Medicaid for Aged and Disabled	July	Case Review Not Completed	2
Cass	Medicaid for Aged and Disabled	July	Closed Retro MED	1
Cass	Medicaid for Aged and Disabled	July	Death of Participant	5
Cass	Medicaid for Aged and Disabled	July	In Another Case	1
Cass	Medicaid for Aged and Disabled	August	Case Review Not Completed	1
Cass	Medicaid for Aged and Disabled	August	Closed Retro MED	1
Cass	Medicaid for Aged and Disabled	August	Death of Participant	3
Cass	Medicaid for Aged and Disabled	August	No Eligible Participants	1
Cass	Medicaid for Aged and Disabled	August	Other	1
Cass	Medicaid for Aged and Disabled	August	Unable to Locate or Moved	1
Cass	Medicaid for Aged and Disabled	September	Death of Participant	4
Cass	Medicaid for Aged and Disabled	September	Failed to Provide Information	1
Cass	Medicaid for Aged and Disabled	September	No Eligible Participants	1

Cass	Medicaid for Aged and Disabled	September	Transfer / Deprivation of Resources	1
Cass	Medicaid for Aged and Disabled	September	Unable to Locate or Moved	2
Cedar	CHIP	September	Eligibility Period Ended	1
Cedar	Medicaid for Aged and Disabled	July	Closed Retro MED	1
Cedar	Medicaid for Aged and Disabled	July	Death of Participant	2
Cedar	Medicaid for Aged and Disabled	August	Death of Participant	1
Cedar	Medicaid for Aged and Disabled	August	Failed to Provide Information	1
Cedar	Medicaid for Aged and Disabled	September	Closed Retro MED	1
Cedar	Medicaid for Aged and Disabled	September	Death of Participant	3
Chase	Medicaid for Aged and Disabled	July	Case Review Not Completed	1
Chase	Medicaid for Aged and Disabled	July	Death of Participant	1
Chase	Medicaid for Aged and Disabled	July	Failed to Provide Information	1
Chase	Medicaid for Aged and Disabled	August	Death of Participant	1
Chase	Medicaid for Aged and Disabled	September	Case Review Not Completed	1
Chase	Medicaid for Aged and Disabled	September	Death of Participant	1
Cherry	Medicaid for Aged and Disabled	July	Case Review Not Completed	1
Cherry	Medicaid for Aged and Disabled	July	In Another Case	1
Cherry	Medicaid for Aged and Disabled	August	Case Review Not Completed	1
Cherry	Medicaid for Aged and Disabled	August	Closed Retro MED	1
Cherry	Medicaid for Aged and Disabled	August	Death of Participant	3
Cherry	Medicaid for Aged and Disabled	September	Death of Participant	2
Cherry	Medicaid for Aged and Disabled	September	Failed to Furnish Citizenship Docum	1
Cheyenne	Medicaid for Aged and Disabled	July	Case Review Not Completed	1
Cheyenne	Medicaid for Aged and Disabled	July	Death of Participant	2
Cheyenne	Medicaid for Aged and Disabled	August	Death of Participant	2
Cheyenne	Medicaid for Aged and Disabled	September	Case Review Not Completed	1
Cheyenne	Medicaid for Aged and Disabled	September	Closed Retro MED	1
Cheyenne	Medicaid for Aged and Disabled	September	Death of Participant	4
Cheyenne	Medicaid for Aged and Disabled	September	Failed to Provide Information	1
Clay	CHIP	August	In Another Case	1
Clay	Medicaid for Aged and Disabled	July	Client Request	1
Clay	Medicaid for Aged and Disabled	July	Closed Retro MED	2
Clay	Medicaid for Aged and Disabled	July	In Another Case	1
Clay	Medicaid for Aged and Disabled	August	Case Review Not Completed	3
Clay	Medicaid for Aged and Disabled	August	Closed Retro MED	1
Clay	Medicaid for Aged and Disabled	August	Death of Participant	2
Clay	Medicaid for Aged and Disabled	September	Death of Participant	1
Clay	Medicaid for Aged and Disabled	September	Not Disabled Or Blind	1
Colfax	CHIP	July	Eligibility Period Ended	1
Colfax	CHIP	August	Eligibility Period Ended	4
Colfax	CHIP	September	Eligibility Period Ended	1
Colfax	Medicaid for Aged and Disabled	July	Closed Retro MED	2
Colfax	Medicaid for Aged and Disabled	July	Death of Participant	1
Colfax	Medicaid for Aged and Disabled	July	Failed to Provide Information	1
Colfax	Medicaid for Aged and Disabled	August	Closed Retro MED	1
Colfax	Medicaid for Aged and Disabled	August	Failed to Provide Information	1
Colfax	Medicaid for Aged and Disabled	August	In Another Case	1
Colfax	Medicaid for Aged and Disabled	August	Unable to Locate or Moved	1
Colfax	Medicaid for Aged and Disabled	September	Case Review Not Completed	2
Colfax	Medicaid for Aged and Disabled	September	Death of Participant	1
Colfax	Medicaid for Aged and Disabled	September	Failed to Provide Information	2
Colfax	Medicaid for Aged and Disabled	September	Unable to Locate or Moved	1
Cuming	Medicaid -Children and Families	July	No Eligible Participants	1
Cuming	Medicaid for Aged and Disabled	July	Case Review Not Completed	1
Cuming	Medicaid for Aged and Disabled	July	Death of Participant	2
Cuming	Medicaid for Aged and Disabled	August	Case Review Not Completed	1
Cuming	Medicaid for Aged and Disabled	August	Death of Participant	1
Cuming	Medicaid for Aged and Disabled	August	Share of Cost Exceeds Need	1
Cuming	Medicaid for Aged and Disabled	September	Death of Participant	1
Cuming	Medicaid for Aged and Disabled	September	Other	1
Custer	CHIP	July	Eligibility Period Ended	1

Custer	Medicaid for Aged and Disabled	July	Closed Retro MED	1
Custer	Medicaid for Aged and Disabled	July	Death of Participant	2
Custer	Medicaid for Aged and Disabled	July	In Another Case	1
Custer	Medicaid for Aged and Disabled	August	Death of Participant	6
Custer	Medicaid for Aged and Disabled	August	Failed to Provide Information	1
Custer	Medicaid for Aged and Disabled	August	In Another Case	1
Custer	Medicaid for Aged and Disabled	August	Not Disabled Or Blind	1
Custer	Medicaid for Aged and Disabled	September	Case Review Not Completed	1
Custer	Medicaid for Aged and Disabled	September	Death of Participant	3
Dakota	CHIP	July	Eligibility Period Ended	3
Dakota	CHIP	August	Eligibility Period Ended	2
Dakota	CHIP	September	Eligibility Period Ended	2
Dakota	Medicaid for Aged and Disabled	July	Case Review Not Completed	3
Dakota	Medicaid for Aged and Disabled	July	Client Request	1
Dakota	Medicaid for Aged and Disabled	July	Closed Retro MED	1
Dakota	Medicaid for Aged and Disabled	July	Death of Participant	5
Dakota	Medicaid for Aged and Disabled	July	Failed to Provide Information	1
Dakota	Medicaid for Aged and Disabled	July	Unable to Locate or Moved	1
Dakota	Medicaid for Aged and Disabled	August	Case Review Not Completed	2
Dakota	Medicaid for Aged and Disabled	August	Death of Participant	1
Dakota	Medicaid for Aged and Disabled	August	In Another Case	1
Dakota	Medicaid for Aged and Disabled	August	No Eligible Participants	1
Dakota	Medicaid for Aged and Disabled	August	Share of Cost Exceeds Need	2
Dakota	Medicaid for Aged and Disabled	September	Case Review Not Completed	3
Dakota	Medicaid for Aged and Disabled	September	Client Request	1
Dakota	Medicaid for Aged and Disabled	September	Death of Participant	3
Dakota	Medicaid for Aged and Disabled	September	In Another Case	1
Dakota	Medicaid for Aged and Disabled	September	Unable to Locate or Moved	1
Dawes	Medicaid for Aged and Disabled	July	No Eligible Participants	1
Dawes	Medicaid for Aged and Disabled	August	Death of Participant	1
Dawes	Medicaid for Aged and Disabled	August	No Eligible Participants	1
Dawes	Medicaid for Aged and Disabled	August	Unable to Locate or Moved	1
Dawes	Medicaid for Aged and Disabled	September	Death of Participant	1
Dawes	Medicaid for Aged and Disabled	September	Failed to Provide Information	1
Dawson	CHIP	July	Eligibility Period Ended	2
Dawson	CHIP	July	Eligibility Requirements Not Met	1
Dawson	CHIP	July	Other	1
Dawson	CHIP	August	Eligibility Period Ended	2
Dawson	CHIP	September	Eligibility Period Ended	3
Dawson	Medicaid -Children and Families	July	Income Exceeds Standards	1
Dawson	Medicaid for Aged and Disabled	July	Case Review Not Completed	3
Dawson	Medicaid for Aged and Disabled	July	Death of Participant	6
Dawson	Medicaid for Aged and Disabled	July	In Another Case	1
Dawson	Medicaid for Aged and Disabled	July	Unable to Locate or Moved	2
Dawson	Medicaid for Aged and Disabled	August	Case Review Not Completed	1
Dawson	Medicaid for Aged and Disabled	August	Client Request	1
Dawson	Medicaid for Aged and Disabled	August	Death of Participant	5
Dawson	Medicaid for Aged and Disabled	August	Failed to Provide Information	1
Dawson	Medicaid for Aged and Disabled	August	No Eligible Participants	2
Dawson	Medicaid for Aged and Disabled	August	Other	1
Dawson	Medicaid for Aged and Disabled	August	Share of Cost Exceeds Need	1
Dawson	Medicaid for Aged and Disabled	August	Unable to Locate or Moved	1
Dawson	Medicaid for Aged and Disabled	September	Death of Participant	6
Dawson	Medicaid for Aged and Disabled	September	Failed Living Arrangement	1
Dawson	Medicaid for Aged and Disabled	September	Failed to Provide Information	2
Dawson	Medicaid for Aged and Disabled	September	Not Disabled Or Blind	1
Dawson	Medicaid for Aged and Disabled	September	Unable to Locate or Moved	1
Deuel	Medicaid for Aged and Disabled	July	Case Review Not Completed	1
Deuel	Medicaid for Aged and Disabled	July	Client Request	1
Deuel	Medicaid for Aged and Disabled	July	Death of Participant	1
Dixon	CHIP	July	Eligibility Period Ended	1

Dixon	Medicaid for Aged and Disabled	July	Closed Retro MED	1
Dixon	Medicaid for Aged and Disabled	July	Death of Participant	1
Dixon	Medicaid for Aged and Disabled	August	Case Review Not Completed	1
Dixon	Medicaid for Aged and Disabled	August	Closed Retro MED	1
Dixon	Medicaid for Aged and Disabled	August	Failed to Provide Information	2
Dixon	Medicaid for Aged and Disabled	August	Other	1
Dixon	Medicaid for Aged and Disabled	September	Failed to Provide Information	1
Dodge	CHIP	July	Client Request	1
Dodge	CHIP	July	Eligibility Period Ended	10
Dodge	CHIP	August	Death of Participant	1
Dodge	CHIP	August	Eligibility Period Ended	4
Dodge	CHIP	September	Eligibility Period Ended	5
Dodge	CHIP	September	Eligibility Requirements Not Met	1
Dodge	Medicaid -Children and Families	July	Eligibility Period Ended	1
Dodge	Medicaid -Children and Families	July	Eligibility Requirements Not Met	1
Dodge	Medicaid -Children and Families	August	Eligibility Period Ended	1
Dodge	Medicaid for Aged and Disabled	July	Case Review Not Completed	8
Dodge	Medicaid for Aged and Disabled	July	Client Request	2
Dodge	Medicaid for Aged and Disabled	July	Closed Retro MED	2
Dodge	Medicaid for Aged and Disabled	July	Death of Participant	11
Dodge	Medicaid for Aged and Disabled	July	Failed Living Arrangement	1
Dodge	Medicaid for Aged and Disabled	July	In Another Case	2
Dodge	Medicaid for Aged and Disabled	July	Not Considered a Resident of NE	1
Dodge	Medicaid for Aged and Disabled	July	Share of Cost Exceeds Need	1
Dodge	Medicaid for Aged and Disabled	August	Case Review Not Completed	2
Dodge	Medicaid for Aged and Disabled	August	Closed Retro MED	8
Dodge	Medicaid for Aged and Disabled	August	Death of Participant	14
Dodge	Medicaid for Aged and Disabled	August	In Another Case	3
Dodge	Medicaid for Aged and Disabled	August	No Eligible Participants	3
Dodge	Medicaid for Aged and Disabled	September	Case Review Not Completed	1
Dodge	Medicaid for Aged and Disabled	September	Closed Retro MED	1
Dodge	Medicaid for Aged and Disabled	September	Death of Participant	2
Dodge	Medicaid for Aged and Disabled	September	Eligibility Requirements Not Met	1
Dodge	Medicaid for Aged and Disabled	September	Failed to Provide Information	5
Dodge	Medicaid for Aged and Disabled	September	No Eligible Participants	1
Douglas	CHIP	July	Death of Participant	2
Douglas	CHIP	July	Eligibility Period Ended	52
Douglas	CHIP	July	Eligibility Requirements Not Met	4
Douglas	CHIP	July	Other	1
Douglas	CHIP	July	Unable to Locate or Moved	1
Douglas	CHIP	August	Death of Participant	1
Douglas	CHIP	August	Eligibility Period Ended	54
Douglas	CHIP	August	Unable to Locate or Moved	1
Douglas	CHIP	September	Death of Participant	3
Douglas	CHIP	September	Eligibility Period Ended	44
Douglas	CHIP	September	In Another Case	1
Douglas	Medicaid -Children and Families	July	Eligibility Period Ended	2
Douglas	Medicaid -Children and Families	July	Eligibility Requirements Not Met	2
Douglas	Medicaid -Children and Families	July	Failed to Provide Information	5
Douglas	Medicaid -Children and Families	July	No Eligible Participants	7
Douglas	Medicaid -Children and Families	August	Applying For/Receiving Other Assist	1
Douglas	Medicaid -Children and Families	August	Eligibility Period Ended	1
Douglas	Medicaid -Children and Families	August	Eligibility Requirements Not Met	1
Douglas	Medicaid -Children and Families	August	Failed to Provide Information	4
Douglas	Medicaid -Children and Families	August	In Another Case	1
Douglas	Medicaid -Children and Families	August	Income Exceeds Standards	1
Douglas	Medicaid -Children and Families	August	No Eligible Participants	12
Douglas	Medicaid -Children and Families	August	Other	1
Douglas	Medicaid -Children and Families	August	Unable to Locate or Moved	1
Douglas	Medicaid -Children and Families	September	Eligibility Period Ended	4
Douglas	Medicaid -Children and Families	September	Eligibility Requirements Not Met	2

Douglas	Medicaid -Children and Families	September	Failed to Provide Information	4
Douglas	Medicaid -Children and Families	September	Income Exceeds Standards	1
Douglas	Medicaid -Children and Families	September	No Eligible Participants	11
Douglas	Medicaid -Children and Families	September	Non-Cooperation with Employment I	1
Douglas	Medicaid -Children and Families	September	System Generated	1
Douglas	Medicaid for Aged and Disabled	July	Case Review Not Completed	53
Douglas	Medicaid for Aged and Disabled	July	Client Request	5
Douglas	Medicaid for Aged and Disabled	July	Closed Retro MED	51
Douglas	Medicaid for Aged and Disabled	July	Death of Participant	62
Douglas	Medicaid for Aged and Disabled	July	Eligibility Requirements Not Met	8
Douglas	Medicaid for Aged and Disabled	July	Failed Living Arrangement	7
Douglas	Medicaid for Aged and Disabled	July	Failed to Provide Information	35
Douglas	Medicaid for Aged and Disabled	July	In Another Case	24
Douglas	Medicaid for Aged and Disabled	July	No Eligible Participants	4
Douglas	Medicaid for Aged and Disabled	July	Not Considered a Resident of NE	7
Douglas	Medicaid for Aged and Disabled	July	Not Disabled Or Blind	1
Douglas	Medicaid for Aged and Disabled	July	Other	6
Douglas	Medicaid for Aged and Disabled	July	Share of Cost Exceeds Need	1
Douglas	Medicaid for Aged and Disabled	July	Unable to Locate or Moved	9
Douglas	Medicaid for Aged and Disabled	August	Applying For/Receiving Other Assist	1
Douglas	Medicaid for Aged and Disabled	August	Case Review Not Completed	29
Douglas	Medicaid for Aged and Disabled	August	Client Request	7
Douglas	Medicaid for Aged and Disabled	August	Closed Retro MED	23
Douglas	Medicaid for Aged and Disabled	August	Death of Participant	77
Douglas	Medicaid for Aged and Disabled	August	Eligibility Requirements Not Met	2
Douglas	Medicaid for Aged and Disabled	August	Failed Living Arrangement	9
Douglas	Medicaid for Aged and Disabled	August	Failed to Provide Information	40
Douglas	Medicaid for Aged and Disabled	August	In Another Case	18
Douglas	Medicaid for Aged and Disabled	August	No Eligible Participants	8
Douglas	Medicaid for Aged and Disabled	August	Not Considered a Resident of NE	8
Douglas	Medicaid for Aged and Disabled	August	Not Disabled Or Blind	2
Douglas	Medicaid for Aged and Disabled	August	Other	3
Douglas	Medicaid for Aged and Disabled	August	Sanctioned	1
Douglas	Medicaid for Aged and Disabled	August	Share of Cost Exceeds Need	6
Douglas	Medicaid for Aged and Disabled	August	Unable to Locate or Moved	5
Douglas	Medicaid for Aged and Disabled	September	Applying For/Receiving Other Assist	3
Douglas	Medicaid for Aged and Disabled	September	Case Review Not Completed	33
Douglas	Medicaid for Aged and Disabled	September	Client Request	7
Douglas	Medicaid for Aged and Disabled	September	Closed Retro MED	21
Douglas	Medicaid for Aged and Disabled	September	Death of Participant	78
Douglas	Medicaid for Aged and Disabled	September	Eligibility Requirements Not Met	5
Douglas	Medicaid for Aged and Disabled	September	Failed Living Arrangement	8
Douglas	Medicaid for Aged and Disabled	September	Failed to Provide Information	44
Douglas	Medicaid for Aged and Disabled	September	In Another Case	23
Douglas	Medicaid for Aged and Disabled	September	No Eligible Participants	5
Douglas	Medicaid for Aged and Disabled	September	Not Considered a Resident of NE	10
Douglas	Medicaid for Aged and Disabled	September	Not Disabled Or Blind	3
Douglas	Medicaid for Aged and Disabled	September	Other	7
Douglas	Medicaid for Aged and Disabled	September	Sanctioned	1
Douglas	Medicaid for Aged and Disabled	September	Share of Cost Exceeds Need	8
Douglas	Medicaid for Aged and Disabled	September	Unable to Locate or Moved	10
Dundy	Medicaid for Aged and Disabled	July	Share of Cost Exceeds Need	1
Dundy	Medicaid for Aged and Disabled	August	Death of Participant	1
Fillmore	Medicaid for Aged and Disabled	July	Case Review Not Completed	1
Fillmore	Medicaid for Aged and Disabled	August	Case Review Not Completed	1
Fillmore	Medicaid for Aged and Disabled	August	Death of Participant	3
Fillmore	Medicaid for Aged and Disabled	August	No Eligible Participants	2
Fillmore	Medicaid for Aged and Disabled	September	Case Review Not Completed	1
Fillmore	Medicaid for Aged and Disabled	September	Death of Participant	2
Franklin	Medicaid for Aged and Disabled	July	Applying For/Receiving Other Assist	1
Franklin	Medicaid for Aged and Disabled	July	Eligibility Requirements Not Met	1

Franklin	Medicaid for Aged and Disabled	July	No Eligible Participants	1
Franklin	Medicaid for Aged and Disabled	August	Death of Participant	1
Frontier	Medicaid for Aged and Disabled	July	Unable to Locate or Moved	1
Frontier	Medicaid for Aged and Disabled	August	In Another Case	1
Frontier	Medicaid for Aged and Disabled	September	Case Review Not Completed	1
Furnas	CHIP	July	Eligibility Period Ended	1
Furnas	Medicaid for Aged and Disabled	July	Case Review Not Completed	1
Furnas	Medicaid for Aged and Disabled	July	Death of Participant	1
Furnas	Medicaid for Aged and Disabled	July	Not Considered a Resident of NE	1
Furnas	Medicaid for Aged and Disabled	August	Failed to Provide Information	1
Furnas	Medicaid for Aged and Disabled	September	Case Review Not Completed	1
Furnas	Medicaid for Aged and Disabled	September	Eligibility Requirements Not Met	1
Furnas	Medicaid for Aged and Disabled	September	Failed Living Arrangement	2
Furnas	Medicaid for Aged and Disabled	September	Failed to Provide Information	1
Gage	CHIP	September	Eligibility Period Ended	2
Gage	Medicaid for Aged and Disabled	July	Case Review Not Completed	1
Gage	Medicaid for Aged and Disabled	July	Death of Participant	7
Gage	Medicaid for Aged and Disabled	July	In Another Case	2
Gage	Medicaid for Aged and Disabled	July	Share of Cost Exceeds Need	1
Gage	Medicaid for Aged and Disabled	July	Unable to Locate or Moved	2
Gage	Medicaid for Aged and Disabled	August	Case Review Not Completed	1
Gage	Medicaid for Aged and Disabled	August	Client Request	1
Gage	Medicaid for Aged and Disabled	August	Closed Retro MED	2
Gage	Medicaid for Aged and Disabled	August	Death of Participant	4
Gage	Medicaid for Aged and Disabled	August	Failed to Provide Information	2
Gage	Medicaid for Aged and Disabled	August	Unable to Locate or Moved	1
Gage	Medicaid for Aged and Disabled	September	Applying For/Receiving Other Assist	1
Gage	Medicaid for Aged and Disabled	September	Case Review Not Completed	1
Gage	Medicaid for Aged and Disabled	September	Closed Retro MED	2
Gage	Medicaid for Aged and Disabled	September	Death of Participant	7
Gage	Medicaid for Aged and Disabled	September	Failed to Provide Information	1
Gage	Medicaid for Aged and Disabled	September	In Another Case	1
Gage	Medicaid for Aged and Disabled	September	No Eligible Participants	1
Garden	Medicaid for Aged and Disabled	July	Case Review Not Completed	1
Garden	Medicaid for Aged and Disabled	August	Case Review Not Completed	1
Garden	Medicaid for Aged and Disabled	August	Other	1
Garden	Medicaid for Aged and Disabled	August	Unable to Locate or Moved	1
Garden	Medicaid for Aged and Disabled	September	Death of Participant	1
Garfield	Medicaid for Aged and Disabled	July	Death of Participant	1
Garfield	Medicaid for Aged and Disabled	August	In Another Case	1
Garfield	Medicaid for Aged and Disabled	September	Death of Participant	2
Gosper	Medicaid for Aged and Disabled	July	Death of Participant	1
Gosper	Medicaid for Aged and Disabled	July	Failed to Provide Information	1
Gosper	Medicaid for Aged and Disabled	August	Share of Cost Exceeds Need	1
Gosper	Medicaid for Aged and Disabled	September	Failed Living Arrangement	1
Greeley	Medicaid for Aged and Disabled	September	Death of Participant	1
Hall	CHIP	July	Death of Participant	1
Hall	CHIP	July	Eligibility Period Ended	9
Hall	CHIP	July	Eligibility Requirements Not Met	1
Hall	CHIP	July	Failed to Provide Information	1
Hall	CHIP	August	Eligibility Period Ended	11
Hall	CHIP	August	In Another Case	1
Hall	CHIP	August	Other	1
Hall	CHIP	September	Eligibility Period Ended	10
Hall	CHIP	September	In Another Case	1
Hall	Medicaid -Children and Families	July	Eligibility Period Ended	1
Hall	Medicaid -Children and Families	July	Eligibility Requirements Not Met	2
Hall	Medicaid -Children and Families	July	Other	1
Hall	Medicaid -Children and Families	August	Eligibility Requirements Not Met	1
Hall	Medicaid -Children and Families	August	Ineligible Alien	1
Hall	Medicaid -Children and Families	August	No Eligible Participants	1

Hall	Medicaid -Children and Families	September	Eligibility Period Ended	2
Hall	Medicaid -Children and Families	September	Eligibility Requirements Not Met	1
Hall	Medicaid -Children and Families	September	Failed to Provide Information	1
Hall	Medicaid -Children and Families	September	Ineligible Alien	1
Hall	Medicaid -Children and Families	September	No Eligible Participants	2
Hall	Medicaid for Aged and Disabled	July	Applying For/Receiving Other Assist	2
Hall	Medicaid for Aged and Disabled	July	Case Review Not Completed	2
Hall	Medicaid for Aged and Disabled	July	Closed Retro MED	4
Hall	Medicaid for Aged and Disabled	July	Death of Participant	12
Hall	Medicaid for Aged and Disabled	July	Eligibility Requirements Not Met	1
Hall	Medicaid for Aged and Disabled	July	Failed to Provide Information	5
Hall	Medicaid for Aged and Disabled	July	In Another Case	3
Hall	Medicaid for Aged and Disabled	July	No Eligible Participants	1
Hall	Medicaid for Aged and Disabled	July	Not Disabled Or Blind	1
Hall	Medicaid for Aged and Disabled	August	Case Review Not Completed	2
Hall	Medicaid for Aged and Disabled	August	Closed Retro MED	5
Hall	Medicaid for Aged and Disabled	August	Death of Participant	9
Hall	Medicaid for Aged and Disabled	August	Eligibility Requirements Not Met	2
Hall	Medicaid for Aged and Disabled	August	Failed to Provide Information	3
Hall	Medicaid for Aged and Disabled	August	Ineligible Alien	1
Hall	Medicaid for Aged and Disabled	August	No Eligible Participants	3
Hall	Medicaid for Aged and Disabled	September	Case Review Not Completed	5
Hall	Medicaid for Aged and Disabled	September	Client Request	1
Hall	Medicaid for Aged and Disabled	September	Closed Retro MED	3
Hall	Medicaid for Aged and Disabled	September	Death of Participant	6
Hall	Medicaid for Aged and Disabled	September	Failed Living Arrangement	1
Hall	Medicaid for Aged and Disabled	September	Failed to Provide Information	4
Hall	Medicaid for Aged and Disabled	September	In Another Case	4
Hall	Medicaid for Aged and Disabled	September	No Eligible Participants	3
Hall	Medicaid for Aged and Disabled	September	Unable to Locate or Moved	2
Hamilton	Medicaid for Aged and Disabled	July	Closed Retro MED	1
Hamilton	Medicaid for Aged and Disabled	July	Death of Participant	2
Hamilton	Medicaid for Aged and Disabled	August	Case Review Not Completed	1
Hamilton	Medicaid for Aged and Disabled	August	Death of Participant	3
Hamilton	Medicaid for Aged and Disabled	August	In Another Case	1
Hamilton	Medicaid for Aged and Disabled	September	Death of Participant	1
Hamilton	Medicaid for Aged and Disabled	September	Failed to Provide Information	2
Harlan	Medicaid for Aged and Disabled	July	Death of Participant	3
Harlan	Medicaid for Aged and Disabled	July	Other	1
Harlan	Medicaid for Aged and Disabled	August	Failed to Provide Information	1
Harlan	Medicaid for Aged and Disabled	September	Case Review Not Completed	2
Harlan	Medicaid for Aged and Disabled	September	Death of Participant	1
Hitchcock	Medicaid for Aged and Disabled	July	Closed Retro MED	1
Hitchcock	Medicaid for Aged and Disabled	July	Share of Cost Exceeds Need	1
Hitchcock	Medicaid for Aged and Disabled	August	Death of Participant	2
Hitchcock	Medicaid for Aged and Disabled	August	No Eligible Participants	1
Hitchcock	Medicaid for Aged and Disabled	September	Case Review Not Completed	1
Holt	CHIP	August	Eligibility Period Ended	1
Holt	CHIP	September	Eligibility Period Ended	1
Holt	Medicaid for Aged and Disabled	July	Case Review Not Completed	1
Holt	Medicaid for Aged and Disabled	July	Death of Participant	1
Holt	Medicaid for Aged and Disabled	July	Failed Living Arrangement	1
Holt	Medicaid for Aged and Disabled	August	Death of Participant	7
Holt	Medicaid for Aged and Disabled	August	No Eligible Participants	1
Holt	Medicaid for Aged and Disabled	August	Other	1
Holt	Medicaid for Aged and Disabled	September	Death of Participant	3
Howard	Medicaid -Children and Families	August	No Eligible Participants	1
Howard	Medicaid for Aged and Disabled	July	Closed Retro MED	1
Howard	Medicaid for Aged and Disabled	August	Death of Participant	2
Howard	Medicaid for Aged and Disabled	August	In Another Case	1
Howard	Medicaid for Aged and Disabled	September	In Another Case	1

Jefferson	Medicaid for Aged and Disabled	July	Closed Retro MED	1
Jefferson	Medicaid for Aged and Disabled	July	Death of Participant	3
Jefferson	Medicaid for Aged and Disabled	July	Death Spenddown Met	1
Jefferson	Medicaid for Aged and Disabled	July	Eligibility Requirements Not Met	1
Jefferson	Medicaid for Aged and Disabled	July	Failed to Provide Information	1
Jefferson	Medicaid for Aged and Disabled	July	In Another Case	3
Jefferson	Medicaid for Aged and Disabled	August	Death of Participant	2
Jefferson	Medicaid for Aged and Disabled	August	Failed to Provide Information	1
Jefferson	Medicaid for Aged and Disabled	September	Unable to Locate or Moved	1
Johnson	CHIP	July	Eligibility Period Ended	1
Johnson	Medicaid -Children and Families	September	No Eligible Participants	1
Johnson	Medicaid for Aged and Disabled	July	Closed Retro MED	2
Johnson	Medicaid for Aged and Disabled	July	Death of Participant	2
Johnson	Medicaid for Aged and Disabled	August	Death of Participant	2
Johnson	Medicaid for Aged and Disabled	September	Death of Participant	1
Kearney	Medicaid for Aged and Disabled	July	Failed to Provide Information	1
Kearney	Medicaid for Aged and Disabled	August	Closed Retro MED	2
Kearney	Medicaid for Aged and Disabled	August	Death of Participant	2
Kearney	Medicaid for Aged and Disabled	August	Failed to Provide Information	1
Kearney	Medicaid for Aged and Disabled	August	Not Considered a Resident of NE	1
Kearney	Medicaid for Aged and Disabled	September	Death of Participant	1
Kearney	Medicaid for Aged and Disabled	September	Failed to Provide Information	1
Kearney	Medicaid for Aged and Disabled	September	Share of Cost Exceeds Need	1
Keith	Medicaid for Aged and Disabled	July	Case Review Not Completed	1
Keith	Medicaid for Aged and Disabled	July	Death of Participant	2
Keith	Medicaid for Aged and Disabled	July	Failed Living Arrangement	1
Keith	Medicaid for Aged and Disabled	August	Case Review Not Completed	1
Keith	Medicaid for Aged and Disabled	August	Client Request	2
Keith	Medicaid for Aged and Disabled	August	Closed Retro MED	2
Keith	Medicaid for Aged and Disabled	August	Death of Participant	2
Keith	Medicaid for Aged and Disabled	August	Failed to Provide Information	1
Keith	Medicaid for Aged and Disabled	August	In Another Case	1
Keith	Medicaid for Aged and Disabled	August	Not Considered a Resident of NE	1
Keith	Medicaid for Aged and Disabled	September	Applying For/Receiving Other Assist	1
Keith	Medicaid for Aged and Disabled	September	Case Review Not Completed	2
Keith	Medicaid for Aged and Disabled	September	Death of Participant	2
Keith	Medicaid for Aged and Disabled	September	No Eligible Participants	1
Kimball	Medicaid for Aged and Disabled	July	Death of Participant	2
Kimball	Medicaid for Aged and Disabled	July	In Another Case	1
Kimball	Medicaid for Aged and Disabled	August	Case Review Not Completed	1
Kimball	Medicaid for Aged and Disabled	August	Death of Participant	1
Kimball	Medicaid for Aged and Disabled	September	Case Review Not Completed	1
Kimball	Medicaid for Aged and Disabled	September	Closed Retro MED	1
Kimball	Medicaid for Aged and Disabled	September	No Eligible Participants	2
Knox	Medicaid for Aged and Disabled	July	Closed Retro MED	1
Knox	Medicaid for Aged and Disabled	July	Death of Participant	2
Knox	Medicaid for Aged and Disabled	July	Failed to Provide Information	1
Knox	Medicaid for Aged and Disabled	July	No Eligible Participants	1
Knox	Medicaid for Aged and Disabled	July	Other	1
Knox	Medicaid for Aged and Disabled	August	Death of Participant	1
Knox	Medicaid for Aged and Disabled	August	Eligibility Requirements Not Met	1
Knox	Medicaid for Aged and Disabled	August	Failed to Provide Information	1
Knox	Medicaid for Aged and Disabled	August	In Another Case	1
Knox	Medicaid for Aged and Disabled	September	Death of Participant	2
Knox	Medicaid for Aged and Disabled	September	Failed to Provide Information	1
Knox	Medicaid for Aged and Disabled	September	In Another Case	1
Lancaster	CHIP	July	Death of Participant	1
Lancaster	CHIP	July	Eligibility Period Ended	8
Lancaster	CHIP	August	Eligibility Period Ended	9
Lancaster	CHIP	August	Failed to Provide Information	1
Lancaster	CHIP	August	Not Considered a Resident of NE	1

Lancaster	CHIP	September	Eligibility Period Ended	7
Lancaster	Medicaid -Children and Families	July	Client Request	1
Lancaster	Medicaid -Children and Families	July	Failed to Provide Information	3
Lancaster	Medicaid -Children and Families	July	Income Exceeds Standards	2
Lancaster	Medicaid -Children and Families	July	Ineligible Alien	1
Lancaster	Medicaid -Children and Families	July	No Eligible Participants	13
Lancaster	Medicaid -Children and Families	August	Eligibility Period Ended	2
Lancaster	Medicaid -Children and Families	August	Failed to Provide Information	2
Lancaster	Medicaid -Children and Families	August	No Eligible Participants	27
Lancaster	Medicaid -Children and Families	September	Eligibility Period Ended	2
Lancaster	Medicaid -Children and Families	September	Failed to Provide Information	4
Lancaster	Medicaid -Children and Families	September	In Another Case	1
Lancaster	Medicaid -Children and Families	September	No Eligible Participants	13
Lancaster	Medicaid for Aged and Disabled	July	Applying For/Receiving Other Assist	1
Lancaster	Medicaid for Aged and Disabled	July	Case Review Not Completed	24
Lancaster	Medicaid for Aged and Disabled	July	Client Request	4
Lancaster	Medicaid for Aged and Disabled	July	Closed Retro MED	16
Lancaster	Medicaid for Aged and Disabled	July	Death of Participant	33
Lancaster	Medicaid for Aged and Disabled	July	Eligibility Requirements Not Met	3
Lancaster	Medicaid for Aged and Disabled	July	Failed Living Arrangement	10
Lancaster	Medicaid for Aged and Disabled	July	Failed to Provide Information	13
Lancaster	Medicaid for Aged and Disabled	July	In Another Case	17
Lancaster	Medicaid for Aged and Disabled	July	No Eligible Participants	5
Lancaster	Medicaid for Aged and Disabled	July	Not Considered a Resident of NE	2
Lancaster	Medicaid for Aged and Disabled	July	Not Disabled Or Blind	2
Lancaster	Medicaid for Aged and Disabled	July	Other	1
Lancaster	Medicaid for Aged and Disabled	July	Sanctioned	3
Lancaster	Medicaid for Aged and Disabled	July	Share of Cost Exceeds Need	4
Lancaster	Medicaid for Aged and Disabled	July	Unable to Locate or Moved	7
Lancaster	Medicaid for Aged and Disabled	August	Case Review Not Completed	9
Lancaster	Medicaid for Aged and Disabled	August	Closed Retro MED	5
Lancaster	Medicaid for Aged and Disabled	August	Death of Participant	37
Lancaster	Medicaid for Aged and Disabled	August	Eligibility Requirements Not Met	3
Lancaster	Medicaid for Aged and Disabled	August	Failed Living Arrangement	12
Lancaster	Medicaid for Aged and Disabled	August	Failed to Provide Information	14
Lancaster	Medicaid for Aged and Disabled	August	In Another Case	12
Lancaster	Medicaid for Aged and Disabled	August	Ineligible Alien	1
Lancaster	Medicaid for Aged and Disabled	August	No Eligible Participants	2
Lancaster	Medicaid for Aged and Disabled	August	Not Disabled Or Blind	1
Lancaster	Medicaid for Aged and Disabled	August	Other	2
Lancaster	Medicaid for Aged and Disabled	August	Sanctioned	1
Lancaster	Medicaid for Aged and Disabled	August	Share of Cost Exceeds Need	4
Lancaster	Medicaid for Aged and Disabled	August	Unable to Locate or Moved	2
Lancaster	Medicaid for Aged and Disabled	September	Applying For/Receiving Other Assist	2
Lancaster	Medicaid for Aged and Disabled	September	Case Review Not Completed	11
Lancaster	Medicaid for Aged and Disabled	September	Closed Retro MED	5
Lancaster	Medicaid for Aged and Disabled	September	Death of Participant	33
Lancaster	Medicaid for Aged and Disabled	September	Eligibility Requirements Not Met	3
Lancaster	Medicaid for Aged and Disabled	September	Failed Living Arrangement	6
Lancaster	Medicaid for Aged and Disabled	September	Failed to Provide Information	15
Lancaster	Medicaid for Aged and Disabled	September	In Another Case	17
Lancaster	Medicaid for Aged and Disabled	September	No Eligible Participants	2
Lancaster	Medicaid for Aged and Disabled	September	Not Considered a Resident of NE	3
Lancaster	Medicaid for Aged and Disabled	September	Not Disabled Or Blind	3
Lancaster	Medicaid for Aged and Disabled	September	Other	1
Lancaster	Medicaid for Aged and Disabled	September	Share of Cost Exceeds Need	2
Lancaster	Medicaid for Aged and Disabled	September	Unable to Locate or Moved	4
Lincoln	CHIP	July	Eligibility Period Ended	1
Lincoln	Medicaid for Aged and Disabled	July	Case Review Not Completed	6
Lincoln	Medicaid for Aged and Disabled	July	Closed Retro MED	3
Lincoln	Medicaid for Aged and Disabled	July	Death of Participant	3

Lincoln	Medicaid for Aged and Disabled	July	Failed Living Arrangement	1
Lincoln	Medicaid for Aged and Disabled	July	Failed to Provide Information	2
Lincoln	Medicaid for Aged and Disabled	July	In Another Case	4
Lincoln	Medicaid for Aged and Disabled	July	Unable to Locate or Moved	3
Lincoln	Medicaid for Aged and Disabled	August	Case Review Not Completed	5
Lincoln	Medicaid for Aged and Disabled	August	Closed Retro MED	3
Lincoln	Medicaid for Aged and Disabled	August	Death of Participant	4
Lincoln	Medicaid for Aged and Disabled	August	Failed to Provide Information	3
Lincoln	Medicaid for Aged and Disabled	August	In Another Case	2
Lincoln	Medicaid for Aged and Disabled	August	No Eligible Participants	1
Lincoln	Medicaid for Aged and Disabled	August	Not Considered a Resident of NE	3
Lincoln	Medicaid for Aged and Disabled	August	Not Disabled Or Blind	1
Lincoln	Medicaid for Aged and Disabled	August	Unable to Locate or Moved	2
Lincoln	Medicaid for Aged and Disabled	September	Case Review Not Completed	3
Lincoln	Medicaid for Aged and Disabled	September	Client Request	1
Lincoln	Medicaid for Aged and Disabled	September	Death of Participant	4
Lincoln	Medicaid for Aged and Disabled	September	Failed to Provide Information	2
Lincoln	Medicaid for Aged and Disabled	September	No Eligible Participants	1
Lincoln	Medicaid for Aged and Disabled	September	Share of Cost Exceeds Need	1
Lincoln	Medicaid for Aged and Disabled	September	Unable to Locate or Moved	2
Logan	Medicaid for Aged and Disabled	August	Failed Living Arrangement	1
Loup	Medicaid for Aged and Disabled	July	Share of Cost Exceeds Need	1
Madison	CHIP	July	Eligibility Period Ended	2
Madison	CHIP	August	Eligibility Period Ended	1
Madison	CHIP	September	Death of Participant	1
Madison	CHIP	September	Eligibility Period Ended	1
Madison	Medicaid for Aged and Disabled	July	Applying For/Receiving Other Assist	1
Madison	Medicaid for Aged and Disabled	July	Case Review Not Completed	3
Madison	Medicaid for Aged and Disabled	July	Closed Retro MED	9
Madison	Medicaid for Aged and Disabled	July	Death of Participant	4
Madison	Medicaid for Aged and Disabled	July	Eligibility Requirements Not Met	1
Madison	Medicaid for Aged and Disabled	July	Failed Living Arrangement	1
Madison	Medicaid for Aged and Disabled	July	Failed to Provide Information	1
Madison	Medicaid for Aged and Disabled	July	No Eligible Participants	2
Madison	Medicaid for Aged and Disabled	July	Not Considered a Resident of NE	1
Madison	Medicaid for Aged and Disabled	July	Not Disabled Or Blind	1
Madison	Medicaid for Aged and Disabled	August	Case Review Not Completed	1
Madison	Medicaid for Aged and Disabled	August	Closed Retro MED	4
Madison	Medicaid for Aged and Disabled	August	Death of Participant	8
Madison	Medicaid for Aged and Disabled	August	Failed Living Arrangement	1
Madison	Medicaid for Aged and Disabled	August	Failed to Provide Information	1
Madison	Medicaid for Aged and Disabled	August	In Another Case	2
Madison	Medicaid for Aged and Disabled	August	No Eligible Participants	2
Madison	Medicaid for Aged and Disabled	September	Case Review Not Completed	5
Madison	Medicaid for Aged and Disabled	September	Client Request	1
Madison	Medicaid for Aged and Disabled	September	Death of Participant	5
Madison	Medicaid for Aged and Disabled	September	Failed Living Arrangement	2
Madison	Medicaid for Aged and Disabled	September	Failed to Provide Information	3
Madison	Medicaid for Aged and Disabled	September	No Eligible Participants	1
Madison	Medicaid for Aged and Disabled	September	Not Considered a Resident of NE	2
Merrick	Medicaid for Aged and Disabled	July	Case Review Not Completed	3
Merrick	Medicaid for Aged and Disabled	July	Failed to Provide Information	1
Merrick	Medicaid for Aged and Disabled	July	In Another Case	1
Merrick	Medicaid for Aged and Disabled	August	No Eligible Participants	1
Merrick	Medicaid for Aged and Disabled	September	Death of Participant	1
Merrick	Medicaid for Aged and Disabled	September	Failed to Provide Information	2
Morrill	Medicaid for Aged and Disabled	July	Case Review Not Completed	1
Morrill	Medicaid for Aged and Disabled	July	Death of Participant	3
Morrill	Medicaid for Aged and Disabled	July	In Another Case	1
Morrill	Medicaid for Aged and Disabled	September	Applying For/Receiving Other Assist	2
Morrill	Medicaid for Aged and Disabled	September	Death of Participant	2

Morrill	Medicaid for Aged and Disabled	September	Failed to Provide Information	1
Morrill	Medicaid for Aged and Disabled	September	In Another Case	1
Nance	Medicaid for Aged and Disabled	July	Death of Participant	2
Nance	Medicaid for Aged and Disabled	August	Death of Participant	3
Nance	Medicaid for Aged and Disabled	August	Unable to Locate or Moved	1
Nance	Medicaid for Aged and Disabled	September	No Eligible Participants	4
Nemaha	Medicaid for Aged and Disabled	July	Case Review Not Completed	1
Nemaha	Medicaid for Aged and Disabled	July	Closed Retro MED	3
Nemaha	Medicaid for Aged and Disabled	July	Death of Participant	2
Nemaha	Medicaid for Aged and Disabled	July	Share of Cost Exceeds Need	1
Nemaha	Medicaid for Aged and Disabled	August	Closed Retro MED	1
Nemaha	Medicaid for Aged and Disabled	August	Death of Participant	1
Nemaha	Medicaid for Aged and Disabled	August	Failed to Provide Information	1
Nemaha	Medicaid for Aged and Disabled	August	In Another Case	1
Nemaha	Medicaid for Aged and Disabled	September	Death of Participant	1
Nuckolls	Medicaid for Aged and Disabled	July	Case Review Not Completed	1
Nuckolls	Medicaid for Aged and Disabled	August	Closed Retro MED	1
Nuckolls	Medicaid for Aged and Disabled	August	Death of Participant	2
Nuckolls	Medicaid for Aged and Disabled	August	Failed to Provide Information	1
Nuckolls	Medicaid for Aged and Disabled	September	Death of Participant	1
Nuckolls	Medicaid for Aged and Disabled	September	Failed to Provide Information	1
Otoe	CHIP	July	Eligibility Period Ended	3
Otoe	CHIP	September	Eligibility Period Ended	1
Otoe	Medicaid for Aged and Disabled	July	Case Review Not Completed	2
Otoe	Medicaid for Aged and Disabled	July	Death of Participant	3
Otoe	Medicaid for Aged and Disabled	July	Failed to Provide Information	1
Otoe	Medicaid for Aged and Disabled	August	Case Review Not Completed	1
Otoe	Medicaid for Aged and Disabled	August	Client Request	1
Otoe	Medicaid for Aged and Disabled	August	Closed Retro MED	1
Otoe	Medicaid for Aged and Disabled	August	Death of Participant	4
Otoe	Medicaid for Aged and Disabled	August	Failed to Provide Information	3
Otoe	Medicaid for Aged and Disabled	August	In Another Case	2
Otoe	Medicaid for Aged and Disabled	August	Unable to Locate or Moved	1
Otoe	Medicaid for Aged and Disabled	September	Case Review Not Completed	1
Otoe	Medicaid for Aged and Disabled	September	Client Request	1
Otoe	Medicaid for Aged and Disabled	September	Closed Retro MED	1
Otoe	Medicaid for Aged and Disabled	September	Death of Participant	6
Otoe	Medicaid for Aged and Disabled	September	In Another Case	2
Otoe	Medicaid for Aged and Disabled	September	No Eligible Participants	1
Otoe	Medicaid for Aged and Disabled	September	Unable to Locate or Moved	1
Out-of-state	CHIP	July	Eligibility Period Ended	1
Out-of-state	CHIP	August	Eligibility Period Ended	2
Out-of-state	Medicaid for Aged and Disabled	July	Case Review Not Completed	6
Out-of-state	Medicaid for Aged and Disabled	July	Client Request	7
Out-of-state	Medicaid for Aged and Disabled	July	Death of Participant	1
Out-of-state	Medicaid for Aged and Disabled	July	Failed to Provide Information	4
Out-of-state	Medicaid for Aged and Disabled	July	In Another Case	1
Out-of-state	Medicaid for Aged and Disabled	July	Not Considered a Resident of NE	29
Out-of-state	Medicaid for Aged and Disabled	July	Unable to Locate or Moved	31
Out-of-state	Medicaid for Aged and Disabled	August	Case Review Not Completed	1
Out-of-state	Medicaid for Aged and Disabled	August	Client Request	6
Out-of-state	Medicaid for Aged and Disabled	August	Eligibility Requirements Not Met	2
Out-of-state	Medicaid for Aged and Disabled	August	Failed to Provide Information	1
Out-of-state	Medicaid for Aged and Disabled	August	In Another Case	1
Out-of-state	Medicaid for Aged and Disabled	August	Not Considered a Resident of NE	20
Out-of-state	Medicaid for Aged and Disabled	August	Unable to Locate or Moved	19
Out-of-state	Medicaid for Aged and Disabled	September	Case Review Not Completed	2
Out-of-state	Medicaid for Aged and Disabled	September	Client Request	10
Out-of-state	Medicaid for Aged and Disabled	September	Eligibility Requirements Not Met	1
Out-of-state	Medicaid for Aged and Disabled	September	Failed Living Arrangement	1
Out-of-state	Medicaid for Aged and Disabled	September	Failed to Provide Information	1

Out-of-state	Medicaid for Aged and Disabled	September	In Another Case	2
Out-of-state	Medicaid for Aged and Disabled	September	Not Considered a Resident of NE	33
Out-of-state	Medicaid for Aged and Disabled	September	Unable to Locate or Moved	28
Pawnee	Medicaid for Aged and Disabled	August	Closed Retro MED	1
Pawnee	Medicaid for Aged and Disabled	September	Closed Retro MED	1
Pawnee	Medicaid for Aged and Disabled	September	Death of Participant	2
Pawnee	Medicaid for Aged and Disabled	September	In Another Case	1
Perkins	CHIP	July	Eligibility Period Ended	1
Perkins	Medicaid for Aged and Disabled	August	No Eligible Participants	1
Perkins	Medicaid for Aged and Disabled	September	Death of Participant	1
Phelps	Medicaid for Aged and Disabled	July	Case Review Not Completed	1
Phelps	Medicaid for Aged and Disabled	July	Closed Retro MED	1
Phelps	Medicaid for Aged and Disabled	July	Death of Participant	1
Phelps	Medicaid for Aged and Disabled	August	Case Review Not Completed	1
Phelps	Medicaid for Aged and Disabled	August	Death of Participant	4
Phelps	Medicaid for Aged and Disabled	August	Failed to Provide Information	1
Phelps	Medicaid for Aged and Disabled	September	Case Review Not Completed	1
Phelps	Medicaid for Aged and Disabled	September	Death of Participant	3
Pierce	Medicaid for Aged and Disabled	July	Case Review Not Completed	1
Pierce	Medicaid for Aged and Disabled	July	Death of Participant	2
Pierce	Medicaid for Aged and Disabled	August	Death of Participant	1
Pierce	Medicaid for Aged and Disabled	August	Failed to Provide Information	1
Pierce	Medicaid for Aged and Disabled	September	Case Review Not Completed	1
Pierce	Medicaid for Aged and Disabled	September	Death of Participant	2
Platte	CHIP	July	Eligibility Period Ended	2
Platte	CHIP	August	Eligibility Period Ended	3
Platte	CHIP	August	Eligibility Requirements Not Met	1
Platte	CHIP	August	In Another Case	1
Platte	CHIP	September	Unable to Locate or Moved	1
Platte	Medicaid for Aged and Disabled	July	Case Review Not Completed	4
Platte	Medicaid for Aged and Disabled	July	Closed Retro MED	2
Platte	Medicaid for Aged and Disabled	July	Death of Participant	9
Platte	Medicaid for Aged and Disabled	July	Failed to Provide Information	2
Platte	Medicaid for Aged and Disabled	July	In Another Case	1
Platte	Medicaid for Aged and Disabled	July	No Eligible Participants	2
Platte	Medicaid for Aged and Disabled	August	Case Review Not Completed	1
Platte	Medicaid for Aged and Disabled	August	Closed Retro MED	2
Platte	Medicaid for Aged and Disabled	August	Death of Participant	5
Platte	Medicaid for Aged and Disabled	August	Failed to Provide Information	2
Platte	Medicaid for Aged and Disabled	August	In Another Case	2
Platte	Medicaid for Aged and Disabled	August	No Eligible Participants	1
Platte	Medicaid for Aged and Disabled	September	Case Review Not Completed	1
Platte	Medicaid for Aged and Disabled	September	Death of Participant	4
Platte	Medicaid for Aged and Disabled	September	Share of Cost Exceeds Need	1
Platte	Medicaid for Aged and Disabled	September	Unable to Locate or Moved	2
Polk	Medicaid for Aged and Disabled	July	Case Review Not Completed	1
Polk	Medicaid for Aged and Disabled	July	Death of Participant	1
Polk	Medicaid for Aged and Disabled	August	Case Review Not Completed	1
Polk	Medicaid for Aged and Disabled	August	In Another Case	1
Polk	Medicaid for Aged and Disabled	September	Death of Participant	1
Polk	Medicaid for Aged and Disabled	September	Unable to Locate or Moved	1
Red Willow	Medicaid for Aged and Disabled	July	Case Review Not Completed	2
Red Willow	Medicaid for Aged and Disabled	July	Client Request	1
Red Willow	Medicaid for Aged and Disabled	July	Closed Retro MED	2
Red Willow	Medicaid for Aged and Disabled	July	Death of Participant	2
Red Willow	Medicaid for Aged and Disabled	July	In Another Case	2
Red Willow	Medicaid for Aged and Disabled	July	Other	1
Red Willow	Medicaid for Aged and Disabled	August	Case Review Not Completed	1
Red Willow	Medicaid for Aged and Disabled	August	Client Request	1
Red Willow	Medicaid for Aged and Disabled	August	Closed Retro MED	4
Red Willow	Medicaid for Aged and Disabled	August	Death of Participant	2

Red Willow	Medicaid for Aged and Disabled	August	Failed to Provide Information	1
Red Willow	Medicaid for Aged and Disabled	August	No Eligible Participants	1
Red Willow	Medicaid for Aged and Disabled	September	Client Request	1
Red Willow	Medicaid for Aged and Disabled	September	Death of Participant	2
Red Willow	Medicaid for Aged and Disabled	September	Eligibility Requirements Not Met	1
Red Willow	Medicaid for Aged and Disabled	September	Failed to Provide Information	2
Red Willow	Medicaid for Aged and Disabled	September	Other	1
Red Willow	Medicaid for Aged and Disabled	September	Unable to Locate or Moved	1
Richardson	Medicaid for Aged and Disabled	July	Case Review Not Completed	2
Richardson	Medicaid for Aged and Disabled	July	Closed Retro MED	1
Richardson	Medicaid for Aged and Disabled	July	Death of Participant	4
Richardson	Medicaid for Aged and Disabled	August	Death of Participant	2
Richardson	Medicaid for Aged and Disabled	August	In Another Case	1
Richardson	Medicaid for Aged and Disabled	August	Unable to Locate or Moved	1
Richardson	Medicaid for Aged and Disabled	September	Death of Participant	2
Richardson	Medicaid for Aged and Disabled	September	Failed to Provide Information	2
Rock	Medicaid for Aged and Disabled	July	Closed Retro MED	1
Rock	Medicaid for Aged and Disabled	September	Failed to Provide Information	1
Rock	Medicaid for Aged and Disabled	September	Unable to Locate or Moved	1
Saline	CHIP	July	Death of Participant	1
Saline	CHIP	July	Eligibility Period Ended	4
Saline	CHIP	July	Eligibility Requirements Not Met	1
Saline	CHIP	August	Eligibility Period Ended	5
Saline	CHIP	September	Eligibility Period Ended	2
Saline	Medicaid -Children and Families	July	No Eligible Participants	1
Saline	Medicaid -Children and Families	September	No Eligible Participants	1
Saline	Medicaid for Aged and Disabled	July	Closed Retro MED	2
Saline	Medicaid for Aged and Disabled	July	Death of Participant	1
Saline	Medicaid for Aged and Disabled	July	Failed Living Arrangement	1
Saline	Medicaid for Aged and Disabled	July	Failed to Provide Information	3
Saline	Medicaid for Aged and Disabled	July	No Eligible Participants	1
Saline	Medicaid for Aged and Disabled	August	Closed Retro MED	2
Saline	Medicaid for Aged and Disabled	August	Death of Participant	3
Saline	Medicaid for Aged and Disabled	August	Failed to Provide Information	1
Saline	Medicaid for Aged and Disabled	August	In Another Case	1
Saline	Medicaid for Aged and Disabled	September	Death of Participant	3
Saline	Medicaid for Aged and Disabled	September	Eligibility Requirements Not Met	1
Saline	Medicaid for Aged and Disabled	September	No Eligible Participants	1
Saline	Medicaid for Aged and Disabled	September	Not Considered a Resident of NE	1
Sarpy	CHIP	July	Eligibility Period Ended	7
Sarpy	CHIP	July	Failed to Provide Information	1
Sarpy	CHIP	August	Eligibility Period Ended	1
Sarpy	CHIP	September	Eligibility Period Ended	5
Sarpy	Medicaid -Children and Families	July	No Eligible Participants	3
Sarpy	Medicaid -Children and Families	August	No Eligible Participants	1
Sarpy	Medicaid -Children and Families	September	No Eligible Participants	1
Sarpy	Medicaid for Aged and Disabled	July	Case Review Not Completed	6
Sarpy	Medicaid for Aged and Disabled	July	Client Request	2
Sarpy	Medicaid for Aged and Disabled	July	Closed Retro MED	6
Sarpy	Medicaid for Aged and Disabled	July	Death of Participant	14
Sarpy	Medicaid for Aged and Disabled	July	Eligibility Requirements Not Met	1
Sarpy	Medicaid for Aged and Disabled	July	Failed Living Arrangement	1
Sarpy	Medicaid for Aged and Disabled	July	Failed to Provide Information	4
Sarpy	Medicaid for Aged and Disabled	July	In Another Case	1
Sarpy	Medicaid for Aged and Disabled	July	No Eligible Participants	1
Sarpy	Medicaid for Aged and Disabled	July	Share of Cost Exceeds Need	1
Sarpy	Medicaid for Aged and Disabled	July	Unable to Locate or Moved	2
Sarpy	Medicaid for Aged and Disabled	August	Case Review Not Completed	5
Sarpy	Medicaid for Aged and Disabled	August	Client Request	1
Sarpy	Medicaid for Aged and Disabled	August	Closed Retro MED	4
Sarpy	Medicaid for Aged and Disabled	August	Death of Participant	7

Sarpy	Medicaid for Aged and Disabled	August	Eligibility Requirements Not Met	1
Sarpy	Medicaid for Aged and Disabled	August	Failed Living Arrangement	1
Sarpy	Medicaid for Aged and Disabled	August	Failed to Provide Information	3
Sarpy	Medicaid for Aged and Disabled	August	In Another Case	2
Sarpy	Medicaid for Aged and Disabled	August	No Eligible Participants	2
Sarpy	Medicaid for Aged and Disabled	August	Not Considered a Resident of NE	1
Sarpy	Medicaid for Aged and Disabled	August	Other	2
Sarpy	Medicaid for Aged and Disabled	August	Share of Cost Exceeds Need	2
Sarpy	Medicaid for Aged and Disabled	August	Unable to Locate or Moved	1
Sarpy	Medicaid for Aged and Disabled	September	Applying For/Receiving Other Assist	1
Sarpy	Medicaid for Aged and Disabled	September	Case Review Not Completed	4
Sarpy	Medicaid for Aged and Disabled	September	Closed Retro MED	2
Sarpy	Medicaid for Aged and Disabled	September	Death of Participant	8
Sarpy	Medicaid for Aged and Disabled	September	Failed Living Arrangement	1
Sarpy	Medicaid for Aged and Disabled	September	Failed to Provide Information	3
Sarpy	Medicaid for Aged and Disabled	September	In Another Case	3
Sarpy	Medicaid for Aged and Disabled	September	Sanctioned	1
Sarpy	Medicaid for Aged and Disabled	September	Share of Cost Exceeds Need	1
Saunders	CHIP	August	Eligibility Period Ended	1
Saunders	Medicaid for Aged and Disabled	July	Case Review Not Completed	2
Saunders	Medicaid for Aged and Disabled	July	Closed Retro MED	1
Saunders	Medicaid for Aged and Disabled	July	Death of Participant	4
Saunders	Medicaid for Aged and Disabled	July	Eligibility Requirements Not Met	1
Saunders	Medicaid for Aged and Disabled	July	Failed to Provide Information	2
Saunders	Medicaid for Aged and Disabled	July	In Another Case	2
Saunders	Medicaid for Aged and Disabled	July	No Eligible Participants	1
Saunders	Medicaid for Aged and Disabled	July	Unable to Locate or Moved	1
Saunders	Medicaid for Aged and Disabled	August	Case Review Not Completed	1
Saunders	Medicaid for Aged and Disabled	August	Death of Participant	8
Saunders	Medicaid for Aged and Disabled	August	Failed to Provide Information	1
Saunders	Medicaid for Aged and Disabled	August	In Another Case	1
Saunders	Medicaid for Aged and Disabled	September	Case Review Not Completed	1
Saunders	Medicaid for Aged and Disabled	September	Closed Retro MED	1
Saunders	Medicaid for Aged and Disabled	September	Death of Participant	2
Saunders	Medicaid for Aged and Disabled	September	Failed to Provide Information	2
Saunders	Medicaid for Aged and Disabled	September	In Another Case	1
Scotts Bluff	CHIP	July	Eligibility Period Ended	2
Scotts Bluff	CHIP	August	Eligibility Period Ended	2
Scotts Bluff	CHIP	September	Eligibility Period Ended	1
Scotts Bluff	CHIP	September	In Another Case	1
Scotts Bluff	Medicaid -Children and Families	September	Other	1
Scotts Bluff	Medicaid for Aged and Disabled	July	Applying For/Receiving Other Assist	1
Scotts Bluff	Medicaid for Aged and Disabled	July	Case Review Not Completed	5
Scotts Bluff	Medicaid for Aged and Disabled	July	Client Request	1
Scotts Bluff	Medicaid for Aged and Disabled	July	Closed Retro MED	1
Scotts Bluff	Medicaid for Aged and Disabled	July	Death of Participant	5
Scotts Bluff	Medicaid for Aged and Disabled	July	In Another Case	1
Scotts Bluff	Medicaid for Aged and Disabled	July	Not Considered a Resident of NE	1
Scotts Bluff	Medicaid for Aged and Disabled	July	Unable to Locate or Moved	1
Scotts Bluff	Medicaid for Aged and Disabled	August	Case Review Not Completed	3
Scotts Bluff	Medicaid for Aged and Disabled	August	Client Request	2
Scotts Bluff	Medicaid for Aged and Disabled	August	Closed Retro MED	1
Scotts Bluff	Medicaid for Aged and Disabled	August	Death of Participant	4
Scotts Bluff	Medicaid for Aged and Disabled	August	Failed to Provide Information	3
Scotts Bluff	Medicaid for Aged and Disabled	August	In Another Case	1
Scotts Bluff	Medicaid for Aged and Disabled	August	Other	1
Scotts Bluff	Medicaid for Aged and Disabled	August	Share of Cost Exceeds Need	1
Scotts Bluff	Medicaid for Aged and Disabled	September	Case Review Not Completed	4
Scotts Bluff	Medicaid for Aged and Disabled	September	Client Request	1
Scotts Bluff	Medicaid for Aged and Disabled	September	Closed Retro MED	1
Scotts Bluff	Medicaid for Aged and Disabled	September	Death of Participant	4

Scotts Bluff	Medicaid for Aged and Disabled	September	Eligibility Requirements Not Met	1
Scotts Bluff	Medicaid for Aged and Disabled	September	Failed to Provide Information	5
Scotts Bluff	Medicaid for Aged and Disabled	September	In Another Case	1
Scotts Bluff	Medicaid for Aged and Disabled	September	Share of Cost Exceeds Need	1
Scotts Bluff	Medicaid for Aged and Disabled	September	Unable to Locate or Moved	1
Seward	CHIP	September	Eligibility Period Ended	1
Seward	CHIP	September	Other	1
Seward	Medicaid for Aged and Disabled	July	Case Review Not Completed	1
Seward	Medicaid for Aged and Disabled	July	Client Request	1
Seward	Medicaid for Aged and Disabled	July	Death of Participant	4
Seward	Medicaid for Aged and Disabled	July	Failed to Provide Information	2
Seward	Medicaid for Aged and Disabled	July	In Another Case	1
Seward	Medicaid for Aged and Disabled	August	Death of Participant	6
Seward	Medicaid for Aged and Disabled	August	Failed Living Arrangement	1
Seward	Medicaid for Aged and Disabled	August	Failed to Provide Information	1
Seward	Medicaid for Aged and Disabled	August	In Another Case	1
Seward	Medicaid for Aged and Disabled	August	No Eligible Participants	1
Seward	Medicaid for Aged and Disabled	September	Case Review Not Completed	1
Seward	Medicaid for Aged and Disabled	September	Death of Participant	5
Seward	Medicaid for Aged and Disabled	September	No Eligible Participants	1
Sheridan	Medicaid for Aged and Disabled	July	Closed Retro MED	1
Sheridan	Medicaid for Aged and Disabled	July	Death of Participant	2
Sheridan	Medicaid for Aged and Disabled	July	Failed to Provide Information	1
Sheridan	Medicaid for Aged and Disabled	July	Other	1
Sheridan	Medicaid for Aged and Disabled	July	Share of Cost Exceeds Need	1
Sheridan	Medicaid for Aged and Disabled	August	Death of Participant	2
Sheridan	Medicaid for Aged and Disabled	September	Death of Participant	5
Sheridan	Medicaid for Aged and Disabled	September	Not Considered a Resident of NE	1
Sherman	Medicaid for Aged and Disabled	August	Death of Participant	1
Sioux	Medicaid for Aged and Disabled	July	In Another Case	1
Stanton	Medicaid for Aged and Disabled	August	Death of Participant	2
Stanton	Medicaid for Aged and Disabled	September	Death of Participant	3
Thayer	Medicaid for Aged and Disabled	July	Case Review Not Completed	1
Thayer	Medicaid for Aged and Disabled	July	Closed Retro MED	1
Thayer	Medicaid for Aged and Disabled	July	In Another Case	1
Thayer	Medicaid for Aged and Disabled	July	Not Disabled Or Blind	1
Thayer	Medicaid for Aged and Disabled	August	Case Review Not Completed	1
Thayer	Medicaid for Aged and Disabled	August	Death of Participant	2
Thayer	Medicaid for Aged and Disabled	September	Case Review Not Completed	2
Thayer	Medicaid for Aged and Disabled	September	Death of Participant	2
Thayer	Medicaid for Aged and Disabled	September	Eligibility Requirements Not Met	1
Thayer	Medicaid for Aged and Disabled	September	In Another Case	1
Thomas	Medicaid for Aged and Disabled	September	No Eligible Participants	1
Thurston	Medicaid for Aged and Disabled	July	Death of Participant	2
Thurston	Medicaid for Aged and Disabled	July	Failed to Provide Information	1
Thurston	Medicaid for Aged and Disabled	July	In Another Case	1
Thurston	Medicaid for Aged and Disabled	July	Not Considered a Resident of NE	1
Thurston	Medicaid for Aged and Disabled	July	Unable to Locate or Moved	2
Thurston	Medicaid for Aged and Disabled	August	Closed Retro MED	2
Thurston	Medicaid for Aged and Disabled	August	Death of Participant	1
Thurston	Medicaid for Aged and Disabled	August	Failed to Provide Information	1
Thurston	Medicaid for Aged and Disabled	September	Death of Participant	2
Thurston	Medicaid for Aged and Disabled	September	Failed to Provide Information	1
Thurston	Medicaid for Aged and Disabled	September	No Eligible Participants	1
Thurston	Medicaid for Aged and Disabled	September	Not Considered a Resident of NE	1
Valley	Medicaid for Aged and Disabled	July	Case Review Not Completed	1
Valley	Medicaid for Aged and Disabled	July	Closed Retro MED	1
Valley	Medicaid for Aged and Disabled	August	Closed Retro MED	1
Valley	Medicaid for Aged and Disabled	August	Death of Participant	1
Valley	Medicaid for Aged and Disabled	August	In Another Case	1
Valley	Medicaid for Aged and Disabled	September	Case Review Not Completed	1

Valley	Medicaid for Aged and Disabled	September	Failed to Provide Information	1
Washington	CHIP	July	Eligibility Period Ended	1
Washington	Medicaid -Children and Families	August	Eligibility Period Ended	1
Washington	Medicaid for Aged and Disabled	July	Case Review Not Completed	1
Washington	Medicaid for Aged and Disabled	July	Closed Retro MED	1
Washington	Medicaid for Aged and Disabled	July	Failed to Provide Information	1
Washington	Medicaid for Aged and Disabled	July	In Another Case	1
Washington	Medicaid for Aged and Disabled	August	Case Review Not Completed	1
Washington	Medicaid for Aged and Disabled	August	Death of Participant	2
Washington	Medicaid for Aged and Disabled	August	Failed to Provide Information	1
Washington	Medicaid for Aged and Disabled	August	In Another Case	1
Washington	Medicaid for Aged and Disabled	August	No Eligible Participants	2
Washington	Medicaid for Aged and Disabled	September	Death of Participant	3
Washington	Medicaid for Aged and Disabled	September	Failed to Provide Information	1
Wayne	CHIP	July	In Another Case	1
Wayne	CHIP	August	Eligibility Period Ended	1
Wayne	Medicaid for Aged and Disabled	July	In Another Case	1
Wayne	Medicaid for Aged and Disabled	August	Case Review Not Completed	1
Wayne	Medicaid for Aged and Disabled	August	Death of Participant	2
Wayne	Medicaid for Aged and Disabled	August	Failed to Provide Information	1
Wayne	Medicaid for Aged and Disabled	September	Death of Participant	2
Wayne	Medicaid for Aged and Disabled	September	In Another Case	1
Wayne	Medicaid for Aged and Disabled	September	No Eligible Participants	1
Webster	Medicaid for Aged and Disabled	July	Case Review Not Completed	1
Webster	Medicaid for Aged and Disabled	July	Death of Participant	2
Webster	Medicaid for Aged and Disabled	July	Failed to Provide Information	1
Webster	Medicaid for Aged and Disabled	July	In Another Case	1
Webster	Medicaid for Aged and Disabled	July	No Eligible Participants	1
Webster	Medicaid for Aged and Disabled	July	Unable to Locate or Moved	1
Webster	Medicaid for Aged and Disabled	August	Closed Retro MED	1
Webster	Medicaid for Aged and Disabled	August	Failed to Provide Information	1
Wheeler	Medicaid for Aged and Disabled	July	Case Review Not Completed	1
Wheeler	Medicaid for Aged and Disabled	August	Case Review Not Completed	1
Wheeler	Medicaid for Aged and Disabled	September	Closed Retro MED	1
York	CHIP	September	Eligibility Period Ended	1
York	Medicaid for Aged and Disabled	July	Case Review Not Completed	1
York	Medicaid for Aged and Disabled	July	Death of Participant	3
York	Medicaid for Aged and Disabled	July	Failed to Provide Information	2
York	Medicaid for Aged and Disabled	July	No Eligible Participants	1
York	Medicaid for Aged and Disabled	July	Unable to Locate or Moved	1
York	Medicaid for Aged and Disabled	August	Case Review Not Completed	1
York	Medicaid for Aged and Disabled	August	Death of Participant	1
York	Medicaid for Aged and Disabled	September	Case Review Not Completed	1
York	Medicaid for Aged and Disabled	September	Closed Retro MED	1
York	Medicaid for Aged and Disabled	September	Death of Participant	2
State	CHIP	July	Client Request	1
State	CHIP	July	Death of Participant	5
State	CHIP	July	Eligibility Period Ended	119
State	CHIP	July	Eligibility Requirements Not Met	7
State	CHIP	July	Failed to Provide Information	2
State	CHIP	July	In Another Case	1
State	CHIP	July	Other	2
State	CHIP	July	Unable to Locate or Moved	1
State	CHIP	August	Death of Participant	2
State	CHIP	August	Eligibility Period Ended	108
State	CHIP	August	Eligibility Requirements Not Met	1
State	CHIP	August	Failed to Provide Information	1
State	CHIP	August	In Another Case	3
State	CHIP	August	Not Considered a Resident of NE	1
State	CHIP	August	Other	1
State	CHIP	August	Unable to Locate or Moved	1

State	CHIP	September	Creditable Coverage	1
State	CHIP	September	Death of Participant	4
State	CHIP	September	Eligibility Period Ended	92
State	CHIP	September	Eligibility Requirements Not Met	1
State	CHIP	September	In Another Case	3
State	CHIP	September	Other	1
State	CHIP	September	Unable to Locate or Moved	1
State	Medicaid -Children and Families	July	Client Request	1
State	Medicaid -Children and Families	July	Eligibility Period Ended	4
State	Medicaid -Children and Families	July	Eligibility Requirements Not Met	5
State	Medicaid -Children and Families	July	Failed to Provide Information	8
State	Medicaid -Children and Families	July	In Another Case	1
State	Medicaid -Children and Families	July	Income Exceeds Standards	4
State	Medicaid -Children and Families	July	Ineligible Alien	1
State	Medicaid -Children and Families	July	No Eligible Participants	25
State	Medicaid -Children and Families	July	Other	1
State	Medicaid -Children and Families	August	Applying For/Receiving Other Assist	1
State	Medicaid -Children and Families	August	Eligibility Period Ended	5
State	Medicaid -Children and Families	August	Eligibility Requirements Not Met	2
State	Medicaid -Children and Families	August	Failed to Provide Information	6
State	Medicaid -Children and Families	August	In Another Case	1
State	Medicaid -Children and Families	August	Income Exceeds Standards	1
State	Medicaid -Children and Families	August	Ineligible Alien	1
State	Medicaid -Children and Families	August	No Eligible Participants	42
State	Medicaid -Children and Families	August	Other	1
State	Medicaid -Children and Families	August	Unable to Locate or Moved	1
State	Medicaid -Children and Families	September	Eligibility Period Ended	8
State	Medicaid -Children and Families	September	Eligibility Requirements Not Met	3
State	Medicaid -Children and Families	September	Failed to Provide Information	9
State	Medicaid -Children and Families	September	In Another Case	1
State	Medicaid -Children and Families	September	Income Exceeds Standards	1
State	Medicaid -Children and Families	September	Ineligible Alien	1
State	Medicaid -Children and Families	September	No Eligible Participants	29
State	Medicaid -Children and Families	September	Non-Cooperation with Employment I	1
State	Medicaid -Children and Families	September	Other	1
State	Medicaid -Children and Families	September	System Generated	1
State	Medicaid for Aged and Disabled	July	Applying For/Receiving Other Assist	6
State	Medicaid for Aged and Disabled	July	Case Review Not Completed	169
State	Medicaid for Aged and Disabled	July	Client Request	26
State	Medicaid for Aged and Disabled	July	Closed Retro MED	128
State	Medicaid for Aged and Disabled	July	Death of Participant	272
State	Medicaid for Aged and Disabled	July	Death Spenddown Met	1
State	Medicaid for Aged and Disabled	July	Eligibility Requirements Not Met	20
State	Medicaid for Aged and Disabled	July	Failed Living Arrangement	24
State	Medicaid for Aged and Disabled	July	Failed Parental Deprivation	1
State	Medicaid for Aged and Disabled	July	Failed to Provide Information	95
State	Medicaid for Aged and Disabled	July	In Another Case	81
State	Medicaid for Aged and Disabled	July	No Eligible Participants	26
State	Medicaid for Aged and Disabled	July	Not Considered a Resident of NE	43
State	Medicaid for Aged and Disabled	July	Not Disabled Or Blind	8
State	Medicaid for Aged and Disabled	July	Other	13
State	Medicaid for Aged and Disabled	July	Sanctioned	3
State	Medicaid for Aged and Disabled	July	Share of Cost Exceeds Need	13
State	Medicaid for Aged and Disabled	July	Unable to Locate or Moved	67
State	Medicaid for Aged and Disabled	August	Applying For/Receiving Other Assist	1
State	Medicaid for Aged and Disabled	August	Case Review Not Completed	90
State	Medicaid for Aged and Disabled	August	Client Request	24
State	Medicaid for Aged and Disabled	August	Closed Retro MED	90
State	Medicaid for Aged and Disabled	August	Death of Participant	297
State	Medicaid for Aged and Disabled	August	Eligibility Requirements Not Met	11
State	Medicaid for Aged and Disabled	August	Failed Living Arrangement	26

State	Medicaid for Aged and Disabled	August	Failed to Provide Information	104
State	Medicaid for Aged and Disabled	August	In Another Case	65
State	Medicaid for Aged and Disabled	August	Ineligible Alien	2
State	Medicaid for Aged and Disabled	August	No Eligible Participants	45
State	Medicaid for Aged and Disabled	August	Not Considered a Resident of NE	35
State	Medicaid for Aged and Disabled	August	Not Disabled Or Blind	5
State	Medicaid for Aged and Disabled	August	Other	15
State	Medicaid for Aged and Disabled	August	Sanctioned	2
State	Medicaid for Aged and Disabled	August	Share of Cost Exceeds Need	18
State	Medicaid for Aged and Disabled	August	Unable to Locate or Moved	40
State	Medicaid for Aged and Disabled	September	Applying For/Receiving Other Assist	10
State	Medicaid for Aged and Disabled	September	Case Review Not Completed	102
State	Medicaid for Aged and Disabled	September	Client Request	27
State	Medicaid for Aged and Disabled	September	Closed Retro MED	44
State	Medicaid for Aged and Disabled	September	Death of Participant	274
State	Medicaid for Aged and Disabled	September	Eligibility Requirements Not Met	15
State	Medicaid for Aged and Disabled	September	Failed Living Arrangement	24
State	Medicaid for Aged and Disabled	September	Failed to Furnish Citizenship Docum	1
State	Medicaid for Aged and Disabled	September	Failed to Provide Information	117
State	Medicaid for Aged and Disabled	September	In Another Case	65
State	Medicaid for Aged and Disabled	September	No Eligible Participants	30
State	Medicaid for Aged and Disabled	September	Not Considered a Resident of NE	51
State	Medicaid for Aged and Disabled	September	Not Disabled Or Blind	8
State	Medicaid for Aged and Disabled	September	Other	10
State	Medicaid for Aged and Disabled	September	Sanctioned	2
State	Medicaid for Aged and Disabled	September	Share of Cost Exceeds Need	15
State	Medicaid for Aged and Disabled	September	Transfer / Deprivation of Resources	1
State	Medicaid for Aged and Disabled	September	Unable to Locate or Moved	60

Applications received July 01, 2014 to July 31, 2014

	# First Time Applicants	Percentage	# Applicants Re-applying	Percentage	County Totals
Adams	13	17.33%	62	82.67%	75
Antelope	0	0.00%	3	100.00%	3
Boone	1	6.25%	15	93.75%	16
Box Butte	3	7.69%	36	92.31%	39
Boyd	1	25.00%	3	75.00%	4
Brown	0	0.00%	4	100.00%	4
Buffalo	18	14.52%	106	85.48%	124
Burt	6	24.00%	19	76.00%	25
Butler	5	26.32%	14	73.68%	19
Cass	3	3.95%	73	96.05%	76
Cedar	1	10.00%	9	90.00%	10
Chase	1	16.67%	5	83.33%	6
Cherry	1	4.35%	22	95.65%	23
Cheyenne	16	50.00%	16	50.00%	32
Clay	7	19.44%	29	80.56%	36
Colfax	10	27.03%	27	72.97%	37
Cuming	3	13.64%	19	86.36%	22
Custer	3	15.00%	17	85.00%	20
Dakota	21	21.65%	76	78.35%	97
Dawes	4	13.33%	26	86.67%	30
Dawson	11	10.68%	92	89.32%	103
Deuel	5	83.33%	1	16.67%	6
Dixon	0	0.00%	8	100.00%	8
Dodge	19	13.77%	119	86.23%	138
Douglas	268	14.11%	1631	85.89%	1899
Dundy	0	0.00%	7	100.00%	7
Franklin	4	19.05%	17	80.95%	21
Frontier	0	0.00%	2	100.00%	2
Furnas	1	5.56%	17	94.44%	18
Gage	4	5.41%	70	94.59%	74
Garden	0	0.00%	2	100.00%	2
Garfield	0	0.00%	4	100.00%	4
Gosper	0	0.00%	3	100.00%	3
Grant	0	0.00%	2	100.00%	2
Greeley	1	50.00%	1	50.00%	2
Hall	46	21.40%	169	78.60%	215
Hamilton	5	25.00%	15	75.00%	20
Hitchcock	0	0.00%	4	100.00%	4
Holt	1	7.14%	13	92.86%	14
Hooker	0	0.00%	2	100.00%	2
Howard	1	12.50%	7	87.50%	8
Jefferson	1	4.17%	23	95.83%	24
Johnson	2	25.00%	6	75.00%	8
Kearney	2	9.09%	20	90.91%	22
Keith	0	0.00%	18	100.00%	18
Keya Paha	0	0.00%	1	100.00%	1
Kimball	0	0.00%	7	100.00%	7
Knox	5	21.74%	18	78.26%	23
Lancaster	104	13.35%	675	86.65%	779
Lincoln	14	12.17%	101	87.83%	115
Logan	0	0.00%	1	100.00%	1
Madison	10	10.20%	88	89.80%	98
Merrick	0	0.00%	9	100.00%	9
Morrill	2	9.52%	19	90.48%	21
Nance	0	0.00%	5	100.00%	5
Nemaha	1	5.26%	18	94.74%	19
Nuckolls	0	0.00%	7	100.00%	7
Otoe	6	23.08%	20	76.92%	26
Out-of-state	2	25.00%	6	75.00%	8
Pawnee	1	20.00%	4	80.00%	5
Perkins	0	0.00%	2	100.00%	2

Applications received July 01, 2014 to July 31, 2014

	# First Time Applicants	Percentage	# Applicants Re-applying	Percentage	County Totals
Phelps	4	28.57%	10	71.43%	14
Pierce	0	0.00%	8	100.00%	8
Platte	8	12.90%	54	87.10%	62
Polk	0	0.00%	16	100.00%	16
Red Willow	2	6.90%	27	93.10%	29
Richardson	2	6.45%	29	93.55%	31
Saline	7	18.42%	31	81.58%	38
Sarpy	46	14.02%	282	85.98%	328
Saunders	5	10.64%	42	89.36%	47
Scotts Bluff	18	13.74%	113	86.26%	131
Seward	3	17.65%	14	82.35%	17
Sheridan	2	13.33%	13	86.67%	15
Sherman	0	0.00%	6	100.00%	6
Sioux	0	0.00%	1	100.00%	1
Stanton	3	30.00%	7	70.00%	10
Thayer	3	33.33%	6	66.67%	9
Thurston	4	5.80%	65	94.20%	69
Valley	0	0.00%	12	100.00%	12
Washington	1	3.33%	29	96.67%	30
Wayne	3	16.67%	15	83.33%	18
Webster	0	0.00%	4	100.00%	4
York	9	18.75%	39	81.25%	48
Report Totals:	753	13.97%	4638	86.03%	5391

Note: If a county is not listed, that indicates that no applications were received for the report month.

Applications received August 01, 2014 to August 31, 2014

Run Date: 09/08/2014

	# First Time		# Applicants		County Totals
	Applicants	Percentage	Re-applying	Percentage	
Adams	12	15.38%	66	84.62%	78
Antelope	0	0.00%	6	100.00%	6
Banner	0	0.00%	1	100.00%	1
Blaine	0	0.00%	1	100.00%	1
Boone	3	60.00%	2	40.00%	5
Box Butte	2	6.67%	28	93.33%	30
Boyd	1	10.00%	9	90.00%	10
Brown	1	6.25%	15	93.75%	16
Buffalo	15	18.29%	67	81.71%	82
Burt	6	24.00%	19	76.00%	25
Butler	7	36.84%	12	63.16%	19
Cass	12	19.35%	50	80.65%	62
Cedar	0	0.00%	4	100.00%	4
Chase	3	15.79%	16	84.21%	19
Cherry	1	4.76%	20	95.24%	21
Cheyenne	0	0.00%	19	100.00%	19
Clay	1	5.00%	19	95.00%	20
Colfax	11	22.45%	38	77.55%	49
Cuming	2	14.29%	12	85.71%	14
Custer	10	22.22%	35	77.78%	45
Dakota	13	16.46%	66	83.54%	79
Dawes	16	39.02%	25	60.98%	41
Dawson	12	10.81%	99	89.19%	111
Deuel	2	28.57%	5	71.43%	7
Dixon	1	9.09%	10	90.91%	11
Dodge	21	17.21%	101	82.79%	122
Douglas	250	13.68%	1577	86.32%	1827
Dundy	0	0.00%	2	100.00%	2
Fillmore	1	12.50%	7	87.50%	8
Franklin	1	12.50%	7	87.50%	8
Frontier	2	20.00%	8	80.00%	10
Furnas	0	0.00%	15	100.00%	15
Gage	8	13.33%	52	86.67%	60
Garden	2	33.33%	4	66.67%	6
Garfield	1	16.67%	5	83.33%	6
Gosper	3	27.27%	8	72.73%	11
Grant	0	0.00%	2	100.00%	2
Greeley	0	0.00%	4	100.00%	4
Hall	36	15.58%	195	84.42%	231
Hamilton	2	15.38%	11	84.62%	13
Harlan	0	0.00%	8	100.00%	8
Hitchcock	0	0.00%	4	100.00%	4
Holt	0	0.00%	30	100.00%	30
Howard	2	25.00%	6	75.00%	8
Jefferson	4	28.57%	10	71.43%	14
Johnson	5	55.56%	4	44.44%	9
Kearney	0	0.00%	13	100.00%	13
Keith	7	35.00%	13	65.00%	20
Kimball	4	26.67%	11	73.33%	15
Knox	3	7.50%	37	92.50%	40
Lancaster	168	23.05%	561	76.95%	729
Lincoln	10	9.62%	94	90.38%	104
Logan	0	0.00%	1	100.00%	1
Madison	14	10.53%	119	89.47%	133
Merrick	1	4.55%	21	95.45%	22
Morrill	0	0.00%	13	100.00%	13
Nance	1	11.11%	8	88.89%	9
Nemaha	7	28.00%	18	72.00%	25
Nuckolls	0	0.00%	4	100.00%	4
Otoe	7	18.42%	31	81.58%	38
Out-of-state	1	10.00%	9	90.00%	10

	# First Time Applicants	Percentage	# Applicants Re-applying	Percentage	County Totals
Pawnee	0	0.00%	5	100.00%	5
Perkins	0	0.00%	5	100.00%	5
Phelps	2	13.33%	13	86.67%	15
Pierce	4	26.67%	11	73.33%	15
Platte	8	10.67%	67	89.33%	75
Polk	3	27.27%	8	72.73%	11
Red Willow	11	40.74%	16	59.26%	27
Richardson	3	11.54%	23	88.46%	26
Rock	1	100.00%	0	0.00%	1
Saline	14	27.45%	37	72.55%	51
Sarpy	62	20.20%	245	79.80%	307
Saunders	5	14.71%	29	85.29%	34
Scotts Bluff	15	8.06%	171	91.94%	186
Seward	1	10.00%	9	90.00%	10
Sheridan	6	26.09%	17	73.91%	23
Sherman	1	5.00%	19	95.00%	20
Stanton	2	25.00%	6	75.00%	8
Thayer	3	42.86%	4	57.14%	7
Thurston	3	3.30%	88	96.70%	91
Valley	11	68.75%	5	31.25%	16
Washington	5	12.50%	35	87.50%	40
Wayne	1	7.14%	13	92.86%	14
Webster	0	0.00%	5	100.00%	5
Wheeler	1	12.50%	7	87.50%	8
York	5	14.29%	30	85.71%	35
Report Totals:	859	15.95%	4525	84.05%	5384

Note: If a county is not listed, that indicates that no applications were received for the report month.

Applications received September 01, 2014 to September 30,
2014

	# First Time Applicants	Percentage	# Applicants Re-applying	Percentage	County Totals
Adams	4	5.00%	76	95.00%	80
Antelope	3	23.08%	10	76.92%	13
Banner	0	0.00%	1	100.00%	1
Blaine	0	0.00%	1	100.00%	1
Boone	2	15.38%	11	84.62%	13
Box Butte	3	7.89%	35	92.11%	38
Boyd	0	0.00%	11	100.00%	11
Brown	0	0.00%	6	100.00%	6
Buffalo	7	7.07%	92	92.93%	99
Burt	0	0.00%	4	100.00%	4
Butler	1	5.88%	16	94.12%	17
Cass	8	12.70%	55	87.30%	63
Cedar	1	25.00%	3	75.00%	4
Chase	1	33.33%	2	66.67%	3
Cherry	2	16.67%	10	83.33%	12
Cheyenne	1	4.17%	23	95.83%	24
Clay	2	15.38%	11	84.62%	13
Colfax	9	40.91%	13	59.09%	22
Cuming	2	16.67%	10	83.33%	12
Custer	4	36.36%	7	63.64%	11
Dakota	18	35.29%	33	64.71%	51
Dawes	5	31.25%	11	68.75%	16
Dawson	12	18.75%	52	81.25%	64
Deuel	0	0.00%	1	100.00%	1
Dixon	1	12.50%	7	87.50%	8
Dodge	15	14.15%	91	85.85%	106
Douglas	216	13.39%	1397	86.61%	1613
Dundy	0	0.00%	2	100.00%	2
Fillmore	1	11.11%	8	88.89%	9
Franklin	0	0.00%	2	100.00%	2
Frontier	0	0.00%	10	100.00%	10
Furnas	6	31.58%	13	68.42%	19
Gage	0	0.00%	56	100.00%	56
Garden	2	28.57%	5	71.43%	7
Garfield	2	100.00%	0	0.00%	2
Gosper	0	0.00%	6	100.00%	6
Greeley	0	0.00%	3	100.00%	3
Hall	43	18.07%	195	81.93%	238
Hamilton	2	14.29%	12	85.71%	14
Harlan	1	8.33%	11	91.67%	12
Hayes	0	0.00%	1	100.00%	1
Hitchcock	1	25.00%	3	75.00%	4
Holt	0	0.00%	16	100.00%	16
Hooker	1	50.00%	1	50.00%	2
Howard	2	7.69%	24	92.31%	26
Jefferson	1	4.35%	22	95.65%	23
Johnson	0	0.00%	8	100.00%	8
Kearney	2	50.00%	2	50.00%	4
Keith	5	20.00%	20	80.00%	25
Keya Paha	0	0.00%	3	100.00%	3
Kimball	1	5.56%	17	94.44%	18
Knox	6	16.22%	31	83.78%	37
Lancaster	107	17.01%	522	82.99%	629
Lincoln	20	19.05%	85	80.95%	105
Logan	0	0.00%	3	100.00%	3
Loup	1	50.00%	1	50.00%	2
Madison	14	12.28%	100	87.72%	114
Merrick	5	35.71%	9	64.29%	14
Morrill	3	20.00%	12	80.00%	15
Nance	0	0.00%	1	100.00%	1
Nemaha	0	0.00%	14	100.00%	14

Applications received September 01, 2014 to September 30,
2014

	# First Time Applicants	Percentage	# Applicants Re-applying	Percentage	County Totals
Nuckolls	2	66.67%	1	33.33%	3
Otoe	5	12.50%	35	87.50%	40
Out-of-state	1	6.67%	14	93.33%	15
Pawnee	1	50.00%	1	50.00%	2
Perkins	0	0.00%	3	100.00%	3
Phelps	5	23.81%	16	76.19%	21
Pierce	2	14.29%	12	85.71%	14
Platte	12	17.14%	58	82.86%	70
Polk	1	7.69%	12	92.31%	13
Red Willow	0	0.00%	21	100.00%	21
Richardson	5	25.00%	15	75.00%	20
Rock	2	33.33%	4	66.67%	6
Saline	9	25.71%	26	74.29%	35
Sarpy	46	16.79%	228	83.21%	274
Saunders	3	9.09%	30	90.91%	33
Scotts Bluff	20	12.20%	144	87.80%	164
Seward	2	6.25%	30	93.75%	32
Sheridan	1	5.88%	16	94.12%	17
Sherman	0	0.00%	8	100.00%	8
Stanton	0	0.00%	11	100.00%	11
Thayer	2	15.38%	11	84.62%	13
Thomas	0	0.00%	1	100.00%	1
Thurston	2	2.82%	69	97.18%	71
Valley	0	0.00%	17	100.00%	17
Washington	8	17.02%	39	82.98%	47
Wayne	2	50.00%	2	50.00%	4
Webster	2	15.38%	11	84.62%	13
Wheeler	0	0.00%	1	100.00%	1
York	2	5.56%	34	94.44%	36
Report Totals:	678	14.26%	4077	85.74%	4755

Note: If a county is not listed, that indicates that no applications were received for the report month.

County	Number of Persons Closed effective 06/01/2014		Number of Persons who Re-Applied within 30 days		Number of Persons who Re-Applied within 60 days	
				Percentage		Percentage
<u>Adams</u>						
MEDICAID	8		0	0.00%	8	100.00%
599 CHIP	2		0	0.00%	0	0.00%
Total	10		0	0.00%	8	80.00%
<u>Buffalo</u>						
MEDICAID	9		0	0.00%	9	100.00%
599 CHIP	2		0	0.00%	0	0.00%
Total	11		0	0.00%	9	81.82%
<u>Burt</u>						
MEDICAID	2		0	0.00%	2	100.00%
Total	2		0	0.00%	2	100.00%
<u>Cass</u>						
MEDICAID	8		0	0.00%	8	100.00%
Total	8		0	0.00%	8	100.00%
<u>Chase</u>						
MEDICAID	1		0	0.00%	1	100.00%
Total	1		0	0.00%	1	100.00%
<u>Chevenne</u>						
MEDICAID	1		0	0.00%	1	100.00%
Total	1		0	0.00%	1	100.00%
<u>Clay</u>						
MEDICAID	3		0	0.00%	3	100.00%
Total	3		0	0.00%	3	100.00%
<u>Colfax</u>						
MEDICAID	1		0	0.00%	1	100.00%
599 CHIP	7		0	0.00%	0	0.00%
Total	8		0	0.00%	1	12.50%
<u>Cuming</u>						
MEDICAID	2		0	0.00%	2	100.00%
599 CHIP	1		0	0.00%	0	0.00%
Total	3		0	0.00%	2	66.67%
<u>Custer</u>						
MEDICAID	3		0	0.00%	3	100.00%
Total	3		0	0.00%	3	100.00%
<u>Dakota</u>						
MEDICAID	9		0	0.00%	9	100.00%
599 CHIP	2		0	0.00%	0	0.00%
Total	11		0	0.00%	9	81.82%
<u>Dawson</u>						
599 CHIP	3		0	0.00%	0	0.00%
Total	3		0	0.00%	0	0.00%
<u>Dodge</u>						
MEDICAID	7		0	0.00%	7	100.00%
599 CHIP	4		0	0.00%	0	0.00%
Total	11		0	0.00%	7	63.64%
<u>Douglas</u>						
MEDICAID	106		0	0.00%	106	100.00%
599 CHIP	66		0	0.00%	0	0.00%
Total	172		0	0.00%	106	61.63%
<u>Gage</u>						
MEDICAID	12		1	8.33%	11	91.67%
Total	12		1	8.33%	11	91.67%

County	Number of Persons Closed effective 06/01/2014	Number of Persons who Re-Applied within 30 days	Percentage	Number of Persons who Re-Applied within 60 days	Percentage
<u>Hall</u>					
MEDICAID	9	0	0.00%	9	100.00%
599 CHIP	14	0	0.00%	0	0.00%
Total	23	0	0.00%	9	39.13%
<u>Howard</u>					
MEDICAID	4	0	0.00%	4	100.00%
Total	4	0	0.00%	4	100.00%
<u>Jefferson</u>					
MEDICAID	4	0	0.00%	4	100.00%
Total	4	0	0.00%	4	100.00%
<u>Keith</u>					
MEDICAID	3	0	0.00%	3	100.00%
Total	3	0	0.00%	3	100.00%
<u>Kimball</u>					
MEDICAID	1	0	0.00%	1	100.00%
Total	1	0	0.00%	1	100.00%
<u>Knox</u>					
MEDICAID	4	0	0.00%	4	100.00%
Total	4	0	0.00%	4	100.00%
<u>Lancaster</u>					
MEDICAID	52	0	0.00%	52	100.00%
599 CHIP	9	0	0.00%	0	0.00%
Total	61	0	0.00%	52	85.25%
<u>Lincoln</u>					
MEDICAID	6	0	0.00%	6	100.00%
Total	6	0	0.00%	6	100.00%
<u>Madison</u>					
599 CHIP	2	0	0.00%	0	0.00%
Total	2	0	0.00%	0	0.00%
<u>Merrick</u>					
MEDICAID	3	0	0.00%	3	100.00%
Total	3	0	0.00%	3	100.00%
<u>Nance</u>					
MEDICAID	1	0	0.00%	1	100.00%
Total	1	0	0.00%	1	100.00%
<u>Nuckolls</u>					
MEDICAID	3	0	0.00%	3	100.00%
Total	3	0	0.00%	3	100.00%
<u>Otoe</u>					
MEDICAID	2	0	0.00%	2	100.00%
Total	2	0	0.00%	2	100.00%
<u>Phelps</u>					
MEDICAID	1	0	0.00%	1	100.00%
599 CHIP	1	0	0.00%	0	0.00%
Total	2	0	0.00%	1	50.00%
<u>Platte</u>					
MEDICAID	7	0	0.00%	7	100.00%
599 CHIP	1	0	0.00%	0	0.00%
Total	8	0	0.00%	7	87.50%

County	Number of Persons Closed effective 06/01/2014	Number of Persons who Re-Applied within 30 days		Number of Persons who Re-Applied within 60 days	
			Percentage		Percentage
<u>Polk</u>					
MEDICAID	4	0	0.00%	4	100.00%
599 CHIP	1	0	0.00%	0	0.00%
Total	5	0	0.00%	4	80.00%
<u>Richardson</u>					
MEDICAID	2	0	0.00%	2	100.00%
Total	2	0	0.00%	2	100.00%
<u>Saline</u>					
MEDICAID	4	0	0.00%	4	100.00%
599 CHIP	6	0	0.00%	0	0.00%
Total	10	0	0.00%	4	40.00%
<u>Sarpy</u>					
MEDICAID	6	0	0.00%	6	100.00%
599 CHIP	5	0	0.00%	0	0.00%
Total	11	0	0.00%	6	54.55%
<u>Saunders</u>					
MEDICAID	4	0	0.00%	4	100.00%
599 CHIP	1	0	0.00%	0	0.00%
Total	5	0	0.00%	4	80.00%
<u>Scotts Bluff</u>					
MEDICAID	2	0	0.00%	2	100.00%
599 CHIP	1	0	0.00%	0	0.00%
Total	3	0	0.00%	2	66.67%
<u>Thurston</u>					
MEDICAID	2	0	0.00%	2	100.00%
Total	2	0	0.00%	2	100.00%
<u>Washington</u>					
MEDICAID	1	0	0.00%	1	100.00%
Total	1	0	0.00%	1	100.00%
<u>Wayne</u>					
MEDICAID	6	0	0.00%	6	100.00%
599 CHIP	3	0	0.00%	0	0.00%
Total	9	0	0.00%	6	66.67%
<u>York</u>					
MEDICAID	6	0	0.00%	6	100.00%
Total	6	0	0.00%	6	100.00%
<u>Out-of-state</u>					
599 CHIP	2	0	0.00%	0	0.00%
Total	2	0	0.00%	0	0.00%
State Totals	442	1	0.23%	308	69.68%

Note: If a county had no individuals closed for 06/01/2014, the county will not appear on the list. The county may have had individuals who applied for programs within 60 days of 06/01/2014, however they are not considered re-applications for benefits which were closed as of 06/01/2014.

The "Number of Persons Closed Effective..." column provides a reflective count of the individuals who were involved in each type of program case. The entries under "Total" are not a true reflection of the number of individuals closed due to an individual's possible participation in multiple programs.

County	Number of Persons Closed effective 07/01/2014		Number of Persons who Re-Applied within 30 days		Number of Persons who Re-Applied within 60 days	
				Percentage		Percentage
<u>Adams</u>						
MEDICAID	3		0	0.00%	3	100.00%
599 CHIP	1		0	0.00%	0	0.00%
Total	4		0	0.00%	3	75.00%
<u>Brown</u>						
MEDICAID	2		0	0.00%	2	100.00%
Total	2		0	0.00%	2	100.00%
<u>Buffalo</u>						
MEDICAID	3		0	0.00%	3	100.00%
599 CHIP	5		0	0.00%	0	0.00%
Total	8		0	0.00%	3	37.50%
<u>Burt</u>						
MEDICAID	1		0	0.00%	1	100.00%
Total	1		0	0.00%	1	100.00%
<u>Cass</u>						
MEDICAID	2		0	0.00%	2	100.00%
Total	2		0	0.00%	2	100.00%
<u>Cheyenne</u>						
MEDICAID	2		0	0.00%	2	100.00%
Total	2		0	0.00%	2	100.00%
<u>Colfax</u>						
599 CHIP	1		0	0.00%	0	0.00%
Total	1		0	0.00%	0	0.00%
<u>Custer</u>						
MEDICAID	2		0	0.00%	2	100.00%
599 CHIP	1		0	0.00%	0	0.00%
Total	3		0	0.00%	2	66.67%
<u>Dakota</u>						
599 CHIP	3		0	0.00%	0	0.00%
Total	3		0	0.00%	0	0.00%
<u>Dawson</u>						
MEDICAID	2		0	0.00%	2	100.00%
599 CHIP	4		0	0.00%	0	0.00%
Total	6		0	0.00%	2	33.33%
<u>Dixon</u>						
599 CHIP	1		0	0.00%	0	0.00%
Total	1		0	0.00%	0	0.00%
<u>Dodge</u>						
MEDICAID	7		0	0.00%	7	100.00%
599 CHIP	11		0	0.00%	0	0.00%
Total	18		0	0.00%	7	38.89%
<u>Douglas</u>						
MEDICAID	61		0	0.00%	61	100.00%
599 CHIP	60		0	0.00%	0	0.00%
Total	121		0	0.00%	61	50.41%
<u>Furnas</u>						
599 CHIP	1		0	0.00%	0	0.00%
Total	1		0	0.00%	0	0.00%
<u>Gage</u>						
MEDICAID	7		0	0.00%	7	100.00%
Total	7		0	0.00%	7	100.00%

County	Number of Persons Closed effective 07/01/2014	Number of Persons who Re-Applied within 30 days	Percentage	Number of Persons who Re-Applied within 60 days	Percentage
<u>Hall</u>					
MEDICAID	14	0	0.00%	14	100.00%
599 CHIP	12	0	0.00%	0	0.00%
Total	26	0	0.00%	14	53.85%
<u>Johnson</u>					
MEDICAID	3	0	0.00%	3	100.00%
599 CHIP	1	0	0.00%	0	0.00%
Total	4	0	0.00%	3	75.00%
<u>Kimball</u>					
MEDICAID	4	0	0.00%	4	100.00%
Total	4	0	0.00%	4	100.00%
<u>Lancaster</u>					
MEDICAID	26	0	0.00%	26	100.00%
599 CHIP	9	0	0.00%	0	0.00%
Total	35	0	0.00%	26	74.29%
<u>Lincoln</u>					
MEDICAID	2	0	0.00%	2	100.00%
599 CHIP	1	0	0.00%	0	0.00%
Total	3	0	0.00%	2	66.67%
<u>Madison</u>					
MEDICAID	8	0	0.00%	8	100.00%
599 CHIP	2	0	0.00%	0	0.00%
Total	10	0	0.00%	8	80.00%
<u>Morrill</u>					
MEDICAID	2	0	0.00%	2	100.00%
Total	2	0	0.00%	2	100.00%
<u>Nance</u>					
MEDICAID	3	0	0.00%	3	100.00%
Total	3	0	0.00%	3	100.00%
<u>Otoe</u>					
MEDICAID	6	0	0.00%	6	100.00%
599 CHIP	3	0	0.00%	0	0.00%
Total	9	0	0.00%	6	66.67%
<u>Perkins</u>					
599 CHIP	1	0	0.00%	0	0.00%
Total	1	0	0.00%	0	0.00%
<u>Platte</u>					
MEDICAID	3	0	0.00%	3	100.00%
599 CHIP	2	0	0.00%	0	0.00%
Total	5	0	0.00%	3	60.00%
<u>Saline</u>					
MEDICAID	1	0	0.00%	1	100.00%
599 CHIP	6	0	0.00%	1	16.67%
Total	7	0	0.00%	2	28.57%
<u>Sarpy</u>					
MEDICAID	12	0	0.00%	12	100.00%
599 CHIP	8	0	0.00%	0	0.00%
Total	20	0	0.00%	12	60.00%
<u>Saunders</u>					
MEDICAID	1	0	0.00%	1	100.00%
Total	1	0	0.00%	1	100.00%

County	Number of Persons Closed effective 07/01/2014	Number of Persons who Re-Applied within 30 days		Number of Persons who Re-Applied within 60 days	
			Percentage		Percentage
<u>Scotts Bluff</u>					
MEDICAID	6	0	0.00%	6	100.00%
599 CHIP	2	0	0.00%	0	0.00%
Total	8	0	0.00%	6	75.00%
<u>Seward</u>					
MEDICAID	1	0	0.00%	1	100.00%
Total	1	0	0.00%	1	100.00%
<u>Washington</u>					
599 CHIP	1	0	0.00%	0	0.00%
Total	1	0	0.00%	0	0.00%
<u>Wayne</u>					
MEDICAID	1	0	0.00%	1	100.00%
599 CHIP	1	0	0.00%	0	0.00%
Total	2	0	0.00%	1	50.00%
<u>York</u>					
MEDICAID	2	0	0.00%	2	100.00%
Total	2	0	0.00%	2	100.00%
<u>Out-of-state</u>					
599 CHIP	1	0	0.00%	0	0.00%
Total	1	0	0.00%	0	0.00%
State Totals	325	0	0.00%	188	57.85%

Note: If a county had no individuals closed for 07/01/2014, the county will not appear on the list. The county may have had individuals who applied for programs within 60 days of 07/01/2014, however they are not considered re-applications for benefits which were closed as of 07/01/2014.

The "Number of Persons Closed Effective..." column provides a reflective count of the individuals who were involved in each type of program case. The entries under "Total" are not a true reflection of the number of individuals closed due to an individual's possible participation in multiple programs.

County	Number of Persons	Number of Persons		Number of Persons	
	Closed effective 08/01/2014	who Re-Applied within 30 days	Percentage	who Re-Applied within 60 days	Percentage
<u>Adams</u>					
MEDICAID	1	0	0.00%	1	100.00%
Total	1	0	0.00%	1	100.00%
<u>Antelope</u>					
599 CHIP	1	0	0.00%	0	0.00%
Total	1	0	0.00%	0	0.00%
<u>Buffalo</u>					
MEDICAID	3	0	0.00%	3	100.00%
599 CHIP	3	0	0.00%	0	0.00%
Total	6	0	0.00%	3	50.00%
<u>Butler</u>					
599 CHIP	1	0	0.00%	0	0.00%
Total	1	0	0.00%	0	0.00%
<u>Cass</u>					
MEDICAID	2	0	0.00%	2	100.00%
Total	2	0	0.00%	2	100.00%
<u>Cheyenne</u>					
MEDICAID	2	0	0.00%	2	100.00%
Total	2	0	0.00%	2	100.00%
<u>Clay</u>					
599 CHIP	1	0	0.00%	0	0.00%
Total	1	0	0.00%	0	0.00%
<u>Colfax</u>					
599 CHIP	4	0	0.00%	0	0.00%
Total	4	0	0.00%	0	0.00%
<u>Dakota</u>					
599 CHIP	2	0	0.00%	0	0.00%
Total	2	0	0.00%	0	0.00%
<u>Dawson</u>					
599 CHIP	2	0	0.00%	0	0.00%
Total	2	0	0.00%	0	0.00%
<u>Dodge</u>					
599 CHIP	5	0	0.00%	0	0.00%
Total	5	0	0.00%	0	0.00%
<u>Douglas</u>					
MEDICAID	60	1	1.67%	59	98.33%
599 CHIP	56	0	0.00%	0	0.00%
Total	116	1	0.86%	59	50.86%
<u>Garden</u>					
MEDICAID	2	0	0.00%	2	100.00%
Total	2	0	0.00%	2	100.00%
<u>Hall</u>					
MEDICAID	9	0	0.00%	9	100.00%
599 CHIP	13	0	0.00%	0	0.00%
Total	22	0	0.00%	9	40.91%
<u>Hamilton</u>					
MEDICAID	2	0	0.00%	2	100.00%
Total	2	0	0.00%	2	100.00%
<u>Holt</u>					
599 CHIP	1	0	0.00%	0	0.00%
Total	1	0	0.00%	0	0.00%

County	Number of Persons Closed effective 08/01/2014	Number of Persons who Re-Applied within 30 days		Number of Persons who Re-Applied within 60 days	
			Percentage		Percentage
<u>Lancaster</u>					
MEDICAID	22	0	0.00%	22	100.00%
599 CHIP	11	0	0.00%	0	0.00%
Total	33	0	0.00%	22	66.67%
<u>Lincoln</u>					
MEDICAID	2	0	0.00%	2	100.00%
Total	2	0	0.00%	2	100.00%
<u>Madison</u>					
MEDICAID	2	0	0.00%	2	100.00%
599 CHIP	1	0	0.00%	0	0.00%
Total	3	0	0.00%	2	66.67%
<u>Morrill</u>					
MEDICAID	1	0	0.00%	1	100.00%
Total	1	0	0.00%	1	100.00%
<u>Otoe</u>					
MEDICAID	2	0	0.00%	2	100.00%
Total	2	0	0.00%	2	100.00%
<u>Phelps</u>					
MEDICAID	1	0	0.00%	1	100.00%
Total	1	0	0.00%	1	100.00%
<u>Platte</u>					
MEDICAID	2	0	0.00%	2	100.00%
599 CHIP	5	0	0.00%	0	0.00%
Total	7	0	0.00%	2	28.57%
<u>Red Willow</u>					
MEDICAID	5	0	0.00%	5	100.00%
Total	5	0	0.00%	5	100.00%
<u>Saline</u>					
599 CHIP	5	0	0.00%	0	0.00%
Total	5	0	0.00%	0	0.00%
<u>Sarpy</u>					
MEDICAID	9	0	0.00%	9	100.00%
599 CHIP	1	0	0.00%	0	0.00%
Total	10	0	0.00%	9	90.00%
<u>Saunders</u>					
599 CHIP	1	0	0.00%	0	0.00%
Total	1	0	0.00%	0	0.00%
<u>Scotts Bluff</u>					
MEDICAID	3	0	0.00%	3	100.00%
599 CHIP	2	0	0.00%	0	0.00%
Total	5	0	0.00%	3	60.00%
<u>Thayer</u>					
MEDICAID	3	0	0.00%	3	100.00%
Total	3	0	0.00%	3	100.00%
<u>Thurston</u>					
MEDICAID	1	0	0.00%	1	100.00%
Total	1	0	0.00%	1	100.00%
<u>Wayne</u>					
599 CHIP	1	0	0.00%	0	0.00%
Total	1	0	0.00%	0	0.00%

County	Number of Persons Closed effective 08/01/2014	Number of Persons who Re-Applied within 30 days		Number of Persons who Re-Applied within 60 days	
			Percentage		Percentage
<u>Out-of-state</u>					
599 CHIP	<u>2</u>	<u>0</u>	<u>0.00%</u>	<u>0</u>	<u>0.00%</u>
Total	2	0	0.00%	0	0.00%
State Totals	252	1	0.40%	133	52.78%

Note: If a county had no individuals closed for 08/01/2014, the county will not appear on the list. The county may have had individuals who applied for programs within 60 days of 08/01/2014, however they are not considered re-applications for benefits which were closed as of 08/01/2014.

The "Number of Persons Closed Effective..." column provides a reflective count of the individuals who were involved in each type of program case. The entries under "Total" are not a true reflection of the number of individuals closed due to an individual's possible participation in multiple programs.

July 2014

	<u>Total Tasks</u>	<u>Average Days to Complete</u>
<u>Priority: High</u>		
CHANGE MANAGEMENT	5103	6.39
INTERVIEWING/PROCESSING	1	13.00
PROCESSING	3001	6.39
<u>Priority: None</u>		
CHANGE MANAGEMENT	27452	14.53
INTERVIEWING/PROCESSING	19	6.84
PROCESSING	16691	5.83
SUPERVISOR REVIEW	162	8.46
LEAD SPECIFIC	17	1.82
APP MGMT ECON ASSIST	6	1.67
APP MGMT MEDICAID	261	0.02

July 2014

	52713	10.42
--	--------------	--------------

August 2014

	<u>Total Tasks</u>	<u>Average Days to Complete</u>
<u>Priority: High</u>		
CHANGE MANAGEMENT	3664	3.88
INTERVIEWING/PROCESSING	1	0.00
PROCESSING	2049	3.92
<u>Priority: None</u>		
CHANGE MANAGEMENT	30010	17.69
INTERVIEWING/PROCESSING	23	4.65
PROCESSING	19389	8.51
SUPERVISOR REVIEW	196	7.91
LEAD SPECIFIC	22	7.95
APP MGMT MEDICAID	62	0.81

August 2014

	55416	12.99
--	--------------	--------------

September 2014

	<u>Total Tasks</u>	<u>Average Days to Complete</u>
<u>Priority: High</u>		
CHANGE MANAGEMENT	3305	1.55
PROCESSING	1845	2.43
LEAD SPECIFIC	3	161.67
<u>Priority: None</u>		
CHANGE MANAGEMENT	35123	17.52
INTERVIEWING/PROCESSING	28	4.36
PROCESSING	21481	10.74
SUPERVISOR REVIEW	222	8.86
LEAD SPECIFIC	15	0.67
APP MGMT ECON ASSIST	2	1.50
APP MGMT MEDICAID	80	0.15

September 2014

	62104	13.82
--	-------	-------

Summary For Quarter Reported

	170233	12.50
--	--------	-------

Table 1. SOCIAL SERVICE WORKER/TRAINEE

	July 2014						August 2014						September 2014					
	Filled	# Filled	# Vacant	Total	Terms	Hires	Filled	# Filled	# Vacant	Total	Terms	Hires	Filled	# Filled	# Vacant	Total	Terms	Hires
	FTE	Positions	Positions	Positions			FTE	Positions	Positions	Positions			FTE	Positions	Positions	Positions		
25744600 MLTC LINCOLN CSC PAY HOME	79.50	82	10	92	1	1	75.00	78	12	90	2	0	84.25	87	5	92	3	8
25744400 MLTC LEXINGTON CSC PAY HOME	36.50	38	5	43	1	1	34.00	35	7	42	2	1	35.00	37	5	42	0	0
25744100 MLTC METRO OMAHA PAY HOME	64.00	64	4	68	1	1	64.00	64	5	69	0	0	65.00	65	4	69	0	0
25744200 MLTC METRO LINCOLN PAY HOME	28.00	28	0	28	0	2	27.00	27	1	28	0	0	26.00	26	1	27	0	0
25744500 MLTC RURAL PAY HOME	57.00	57	2	59	1	1	56.50	57	2	59	0	0	55.50	56	3	59	1	0
25310016 WESTERN SA EA PAY HOME	19.50	20	0	20	0	0	18.50	19	1	20	1	0	19.50	20	0	20	4	0
25319001 CSC SCOTTSBLUFF SSW PAY HOME	76.00	76	6	82	2	5	77.00	77	5	82	5	5	71.00	71	11	82	0	1
25340010 CENTRAL SA EA PAY HOME	26.00	26	2	28	1	0	26.00	26	2	28	2	1	26.00	26	2	28	0	0
25350030 NORTHERN SA EA PAY HOME	19.00	19	5	24	0	0	17.00	17	7	24	1	0	17.00	17	7	24	1	2
25359001 CSC FREMONT SSW PAY HOME	110.80	111	8	119	5	3	109.80	110	9	119	3	3	110.80	111	8	119	3	7
25370010 SOUTHEAST SA EA PAY HOME	30.50	31	2	33	0	0	30.50	31	2	33	1	2	30.50	31	2	33	0	0
25380011 EASTERN SA EA PAY HOME	45.00	45	1	46	0	1	45.00	45	1	46	1	0	44.00	44	2	46	0	0
TOTAL	591.80	597	45	642	12	15	580.30	586	54	640	18	12	584.55	591	50	641	12	18

*All numbers exclude frozen positions

**Filled FTE, # Filled Positions, and # Vacant Positions from monthly FTE Reports (pulled from Workday)

†Terms and Hires from monthly Terms-Hires Report (pulled from Workday)

Table 2. SOCIAL SERVICE LEAD WORKER

	July 2014						August 2014						September 2014					
	Filled	# Filled	# Vacant	Total	Terms	Hires	Filled	# Filled	# Vacant	Total	Terms	Hires	Filled	# Filled	# Vacant	Total	Terms	Hires
	FTE	Positions	Positions	Positions			FTE	Positions	Positions	Positions			FTE	Positions	Positions	Positions		
25744600 MLTC LINCOLN CSC PAY HOME	10	10	0	10	0	0	9	9	1	10	0	0	10	10	0	10	0	0
25744400 MLTC LEXINGTON CSC PAY HOME	5	5	0	5	0	0	5	5	0	5	0	0	5	5	0	5	0	0
25744100 MLTC METRO OMAHA PAY HOME	5	5	2	7	0	0	7	7	0	7	1	0	7	7	0	7	0	0
25744200 MLTC METRO LINCOLN PAY HOME	3	3	0	3	0	0	3	3	0	3	0	0	3	3	0	3	0	0
25744500 MLTC RURAL PAY HOME	7	7	0	7	0	0	7	7	0	7	0	0	6	6	1	7	1	0
25310016 WESTERN SA EA PAY HOME	2	2	0	2	0	0	2	2	0	2	0	0	2	2	0	2	0	0
25319001 CSC SCOTTSBLUFF SSW PAY HOME	9	9	0	9	0	0	9	9	0	9	0	0	9	9	0	9	0	0
25340010 CENTRAL SA EA PAY HOME	5	5	0	5	0	0	5	5	0	5	0	0	5	5	0	5	0	0
25350030 NORTHERN SA EA PAY HOME	2	2	0	2	0	0	2	2	0	2	0	0	2	2	0	2	0	0
25359001 CSC FREMONT SSW PAY HOME	14	14	0	14	0	0	10	10	4	14	1	0	12	12	2	14	0	0
25370010 SOUTHEAST SA EA PAY HOME	2	2	1	3	1	0	3	3	0	3	0	0	3	3	0	3	0	0
25380011 EASTERN SA EA PAY HOME	4	4	0	4	0	0	4	4	0	4	0	0	4	4	0	4	0	0
TOTAL	68	68	3	71	1	0	66	66	5	71	2	0	68	68	3	71	1	0

*All numbers exclude frozen positions

**Filled FTE, # Filled Positions, and # Vacant Positions from monthly FTE Reports (pulled from Workday)

†Terms and Hires from monthly Terms-Hires Report (pulled from Workday)